

Converting Colors

Hex(DDC4B2)

Have a look what the booklet for
Hex(DDC4B2) contains.

Hex(DDC4B2)	3
<i>Conversions</i>	4
<i>Details</i>	6
<i>Harmonies</i>	11
<i>Previews</i>	23
<i>Color Blindness Simulation</i>	26
<i>CSS Examples</i>	29

Color

Hex(DDC4B2)

Conversions

Conversions Part 1

Format	Color
Hex	DDC4B2
RGB	221, 196, 178
RGB Percent	87%, 77%, 70%
CMY	0.1333, 0.2314, 0.3020
CMYK	0.00, 0.11, 0.19, 0.13
HSL	25°, 39%, 78%
HSV	25°, 19%, 87%
XYZ	57.5946, 58.0664, 50.2918
YIQ	201.4230, 20.6780, -0.2980

Conversions

Conversions Part 2

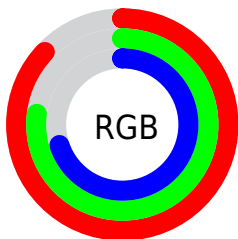
Format	Color
RYB	221, 209, 178
Decimal	14533810
CIELab	80.78, 5.97, 12.25
CIELCh	81, 13.632, 64.021
Yxy	58.0664, 0.3471, 0.3499
Android (android.graphics.Color)	4292723890 (0xFFDDC4B2)
YUV	201.4230, -11.5475, 17.1690
Hunter-Lab	76.2013, 1.5620, 14.2103

Details

The Hex color **DDC4B2** is a light color, and the websafe version is hex **CCCCCC**. A complement of this color would be **B2CBDD**, and the grayscale version is **CACACA**.

A 20% lighter version of the original color is **FFFDEA**, and **A68E7D** is the 20% darker color. If you saturate the color by 10%, you get **DDB79C**, and if you desaturate by 10%, it is **DDD1C8**.

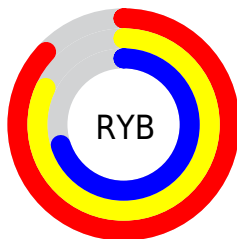
Distribution



Red (87%)

Green (77%)

Blue (70%)



Red (87%)

Yellow (82%)

Blue (70%)

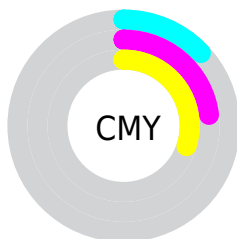


Cyan (0%)

Magenta (11%)

Yellow (19%)

Black (13%)



Cyan (13%)

Magenta (23%)

Yellow (30%)

Brightness & Saturation Gradients

These gradients show how the Hex color DDC4B2 changes by changing the brightness by 10 percent. The first figure shows a shift by +10% for each color and the second figure -10%.

Similar to the brightness gradients but the following saturation gradients show a change of the Hex color DDC4B2 by changing the saturation by 10% instead.

 DDC4B2

 DDC4B2

FFFFFF

 C1A997

 FFFDEA

 A68E7D

 8B7564

 715C4C

 584536

 402E20

 2A1A0A

 120000

 000000

 DDC4B2

 DDC4B2

 DDB79C

 DDD1C8

 DDAA86

 DDEEDE

 DD9D70

 DDEBF4

 DD915A

 DDF7FF

 DD8444

 DDFFFF

 DD772D

 DD6A17

 DD5D01

 DD5D00

Harmonies

Analogous

The Analogous color harmony consists of three colors that are next to each other on the color wheel.



E3C1BB



DDC4B2



D1C8AF

Triad

The Triadic color harmony groups three colors that are evenly spaced from another and form a triangle on the color wheel.



DDC4B2



ABD0CA



CDC5DE

Complementary

The Complementary color scheme is a pair of colors which are on the opposite of each other on the color wheel.



DDC4B2



B2CBDD

Split Complementary

Split-complementary colors differ from the complementary color scheme. The scheme consists of three colors, the original color and two neighbors of the complement color.



BDC9E2



DDC4B2



A8CFD6

Square

The Square scheme is like the rectangle color scheme, but the four colors are evenly spaced on the color wheel.



DDC4B2



B5CFBD



AFCDDF



DBC1D4

Rectangle

The Rectangle color scheme consists of four colors that form a rectangle on the color wheel.



DDC4B2



C8CBB1



AFCDDF



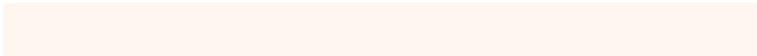
C8C6E0

Sweetspot

The Sweet Spot groups the original color and five complimentary colors.



DDC4B2



FFF6F0



DDB2CB



807A77



000000



808080

Same Dimension

The Same Dimension uses a secret algorithm to generate beautiful new colors.



DDC4B2



FFDDC4



DDD9B2



6E6763



AD4900



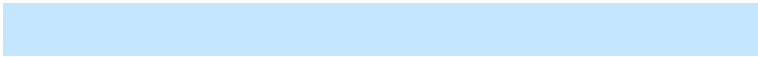
2E1300

Inverse Universe

The Inverse Universe completely reimagines the original color for something new.



B2CBDD



C4E6FF



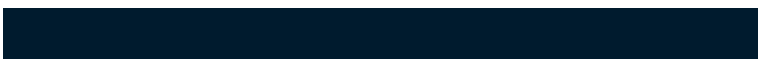
B2B6DD



63696E



0065AD



001B2E

Previews

White Background



This preview shows how the Hex color DDC4B2 looks on a white background.

Color Contrast Check

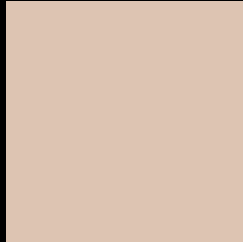
Large Text (above 18pt) WCAG AA × Fail

Any Text WCAG AA × Fail

Large Text (above 18pt) WCAG AAA × Fail

Any Text WCAG AAA × Fail

Black Background



This preview shows how the Hex color DDC4B2 looks on a black background.

Color Contrast Check

Large Text (above 18pt) WCAG AA ✓ Pass

Any Text WCAG AA ✓ Pass

Large Text (above 18pt) WCAG AAA ✓ Pass

Any Text WCAG AAA ✓ Pass

If you want to check with other color combinations, try the [Color Contrast Checker](#).

Hex DDC4B2 Background



This preview shows how black text looks on a background with the Hex color DDC4B2.

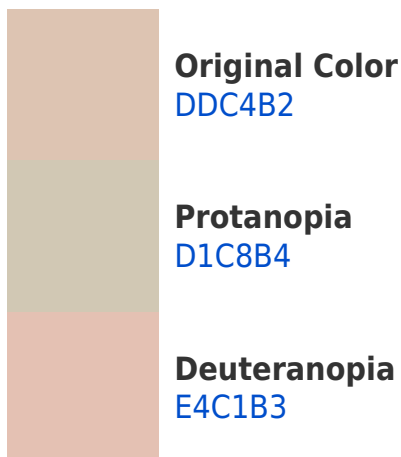


This preview shows how white text looks on a background with the Hex color DDC4B2.

Color Blindness Simulation

Color vision deficiency is a very complex topic, and I could not describe the different causes any better than Wikipedia does, so if you want to learn more, you should check out their [article about color blindness](#).

Dichromacy



Trichromacy



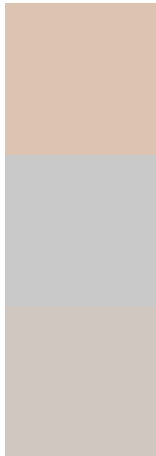
Original Color
DDC4B2

Protanomaly
D5C7B3

Deuteranomaly
E1C2B3

Tritanomaly
E0C1C4

Monochromacy



Original Color
DDC4B2

Achromatopsia
C9C9C9

Achromatomaly
D0C7C1

CSS Examples

Text

The CSS property to change the color of the text to Hex DDC4B2 is called "color". The color property can be set on classes, ids or directly on the HTML element.

This example shows how text in the color #DDC4B2 looks like.

```
.text, #text, p{  
    color:#DDC4B2  
}
```

If you want to add a text shadow in that color use the text-shadow property, you can generate a text shadow directly with our [CSS Text Shadow Generator](#).

Here you see how black text with a 4 pixel #DDC4B2 colored shadow looks like.

```
.shadow{ text-shadow: 4px 4px 2px #DDC4B2
}
```

Border

The CSS property to change the border of an element to Hex DDC4B2 is called "border". The border property can be set on classes, ids or directly on the HTML element.

This example shows the color as border, it can be applied via the CSS property "border" or "border-color".

```
.border, #border, table{ border:4px solid
#DDC4B2 }
```

If only the border color should be changed use the property `border-color`.

```
.border{ border-color:#DDC4B2 }
```

If you want to add a box shadow in that color use:

Here you see how a box with a 4 pixel #DDC4B2 colored shadow looks like.

```
.boxshadow{ -moz-box-shadow:4px 4px 4px  
4px #DDC4B2; -webkit-box-shadow:4px 4px  
4px 4px #DDC4B2; box-shadow:4px 4px 4px  
4px #DDC4B2 }
```

Background

The CSS property to change the background color of an element to Hex DDC4B2 is called "background". The background property can be set on classes, ids or directly on the HTML element.

```
.background, #background, body{  
background:#DDC4B2 }
```

If only the background color should be changed can be used:

```
.background{ background-color:#DDC4B2 }
```

This example shows the color as background, it is applied via the CSS property "background".

To optimize and compress your CSS code, you can use our [online CSS compressor and optimizer](#) based on csstidy. If you want to create a linear or radial gradient as background or border, check our [CSS Gradient Generator](#).

Hey! You found this booklet interesting? Support Converting Colors with the new Membership Option!

The pro membership hides all ads, plus gives you double the colors in the color bucket, and more awesome pro features!

[Learn more, Memberships starting at \\$2.50/m!](#)

**Follow me
on Twitter!**

@ConvertingColor