

Converting Colors

Hex(DDC4CB)

Have a look what the booklet for
Hex(DDC4CB) contains.

Hex(DDC4CB)	3
<i>Conversions</i>	4
<i>Details</i>	6
<i>Harmonies</i>	11
<i>Previews</i>	23
<i>Color Blindness Simulation</i>	26
<i>CSS Examples</i>	29

Color

Hex(DDC4CB)

Conversions

Conversions Part 1

Format	Color
Hex	DDC4CB
RGB	221, 196, 203
RGB Percent	87%, 77%, 80%
CMY	0.1333, 0.2314, 0.2039
CMYK	0.00, 0.11, 0.08, 0.13
HSL	343°, 27%, 82%
HSV	343°, 11%, 87%
XYZ	60.3382, 59.1638, 64.7395
YIQ	204.2730, 12.6530, 7.4770

Conversions

Conversions Part 2

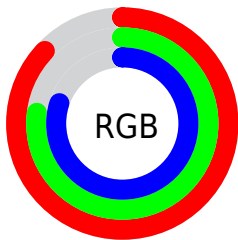
Format	Color
R_{YB}	221, 196, 203
Decimal	14533835
CIE _{Lab}	81.38, 9.97, -0.28
CIE _{LCh}	81, 9.978, 358.405
Yxy	59.1638, 0.3275, 0.3211
Android (android.graphics.Color)	4292723915 (0xFFDDC4CB)
YUV	204.2730, -0.6276, 14.6696
Hunter-Lab	76.9180, 5.4175, 3.9401

Details

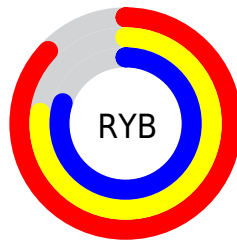
The Hex color **DDC4CB** is a light color, and the websafe version is hex **CCCCCC**. A complement of this color would be **C4DDD6**, and the grayscale version is **CCCCCC**.

A 20% lighter version of the original color is **FFDFF**, and **A68E95** is the 20% darker color. If you saturate the color by 10%, you get **DDAEBB**, and if you desaturate by 10%, it is **DDDADB**.

Distribution



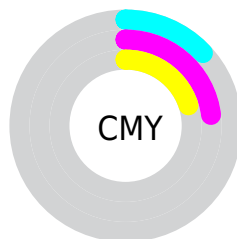
- Red (87%)
- Green (77%)
- Blue (80%)



- Red (87%)
- Yellow (77%)
- Blue (80%)



- Cyan (0%)
- Magenta (11%)
- Yellow (8%)
- Black (13%)



- Cyan (13%)
- Magenta (23%)
- Yellow (20%)

Brightness & Saturation Gradients

These gradients show how the Hex color DDC4CB changes by changing the brightness by 10 percent. The first figure shows a shift by +10% for each color and the second figure -10%.

Similar to the brightness gradients but the following saturation gradients show a change of the Hex color DDC4CB by changing the saturation by 10% instead.

 DDC4CB

FFFFFF

 FFFDFD

 DDC4CB

 C1A9B0

 A68E95

 8B757B

 725C62

 59444B

 412E34

 2B191F

 180006

 000000

 DDC4CB

 DDC4CB

 DDAEBB

 DDDADB

 DD98AB

 DDF0EB

 DD829B

 DDFFFB

 DD6C8B

 DDFFFF

 DD567B

 DD3F6C

 DD295C

 DD134C

 DD003E

Harmonies

Analogous

The Analogous color harmony consists of three colors that are next to each other on the color wheel.



D6C5D4



DDC4CB



DFC4C2

Triad

The Triadic color harmony groups three colors that are evenly spaced from another and form a triangle on the color wheel.



DDC4CB



C8CCBA



B7CEDA

Complementary

The Complementary color scheme is a pair of colors which are on the opposite of each other on the color wheel.



DDC4CB



C4DDD6

Split Complementary

Split-complementary colors differ from the complementary color scheme. The scheme consists of three colors, the original color and two neighbors of the complement color.



B3D0D3



DDC4CB



BECFC0

Square

The Square scheme is like the rectangle color scheme, but the four colors are evenly spaced on the color wheel.



DDC4CB



D3C9B8



B6D0C9



C0CBDD

Rectangle

The Rectangle color scheme consists of four colors that form a rectangle on the color wheel.



DDC4CB



DDC6BD



B6D0C9



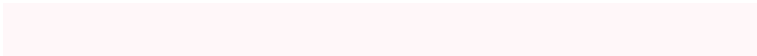
B5CFD8

Sweetspot

The Sweet Spot groups the original color and five complimentary colors.



DDC4CB



FFF7F9



D6C4DD



807A7C



000000



808080

Same Dimension

The Same Dimension uses a secret algorithm to generate beautiful new colors.



DDC4CB



FFDBE5



DDC9C4



6E6366



AD0031



2E000D

Inverse Universe

The Inverse Universe completely reimagines the original color for something new.



DDC4CB



FFDBE5



C4D8DD



6E6366



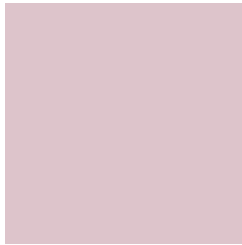
AD0031



2E000D

Previews

White Background



This preview shows how the Hex color DDC4CB looks on a white background.

Color Contrast Check

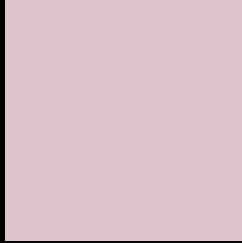
Large Text (above 18pt) WCAG AA × Fail

Any Text WCAG AA × Fail

Large Text (above 18pt) WCAG AAA × Fail

Any Text WCAG AAA × Fail

Black Background



This preview shows how the Hex color DDC4CB looks on a black background.

Color Contrast Check

Large Text (above 18pt) WCAG AA ✓ Pass

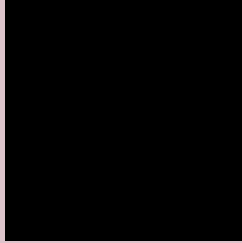
Any Text WCAG AA ✓ Pass

Large Text (above 18pt) WCAG AAA ✓ Pass

Any Text WCAG AAA ✓ Pass

If you want to check with other color combinations, try the [Color Contrast Checker](#).

Hex DDC4CB Background



This preview shows how black text looks on a background with the Hex color DDC4CB.



This preview shows how white text looks on a background with the Hex color DDC4CB.

Color Blindness Simulation

Color vision deficiency is a very complex topic, and I could not describe the different causes any better than Wikipedia does, so if you want to learn more, you should check out their [article about color blindness](#).

Dichromacy



Original Color
DDC4CB

Protanopia
CDC9CE

Deuteranopia
DDC4CB

Trichromacy



Original Color
DDC4CB

Protanomaly
D3C7CD

Deuteranomaly
DDC4CB

Tritanomaly
DEC3CF

Monochromacy



Original Color
DDC4CB

Achromatopsia
CCCCCC

Achromatomaly
D2C9CC

CSS Examples

Text

The CSS property to change the color of the text to Hex DDC4CB is called "color". The color property can be set on classes, ids or directly on the HTML element.

This example shows how text in the color #DDC4CB looks like.

```
.text, #text, p{  
    color:#DDC4CB  
}
```

If you want to add a text shadow in that color use the text-shadow property, you can generate a text shadow directly with our [CSS Text Shadow Generator](#).

Here you see how black text with a 4 pixel #DDC4CB colored shadow looks like.

```
.shadow{ text-shadow: 4px 4px 2px #DDC4CB
}
```

Border

The CSS property to change the border of an element to Hex DDC4CB is called "border". The border property can be set on classes, ids or directly on the HTML element.

This example shows the color as border, it can be applied via the CSS property "border" or "border-color".

```
.border, #border, table{ border:4px solid
#DDC4CB }
```

If only the border color should be changed use the property `border-color`.

```
.border{ border-color:#DDC4CB }
```

If you want to add a box shadow in that color use:

Here you see how a box with a 4 pixel #DDC4CB colored shadow looks like.

```
.boxshadow{ -moz-box-shadow:4px 4px 4px  
4px #DDC4CB; -webkit-box-shadow:4px 4px  
4px 4px #DDC4CB; box-shadow:4px 4px 4px  
4px #DDC4CB }
```

Background

The CSS property to change the background color of an element to Hex DDC4CB is called "background". The background property can be set on classes, ids or directly on the HTML element.

```
.background, #background, body{  
background:#DDC4CB }
```

If only the background color should be changed can be used:

```
.background{ background-color:#DDC4CB }
```

This example shows the color as background, it is applied via the CSS property "background".

To optimize and compress your CSS code, you can use our [online CSS compressor and optimizer](#) based on csstidy. If you want to create a linear or radial gradient as background or border, check our [CSS Gradient Generator](#).

Hey! You found this booklet interesting? Support Converting Colors with the new Membership Option!

The pro membership hides all ads, plus gives you double the colors in the color bucket, and more awesome pro features!

[Learn more, Memberships starting at \\$2.50/m!](#)

**Follow me
on Twitter!**

@ConvertingColor