

Converting Colors

Hex(DDC5CE)

Have a look what the booklet for
Hex(DDC5CE) contains.

Hex(DDC5CE)	3
<i>Conversions</i>	4
<i>Details</i>	6
<i>Harmonies</i>	11
<i>Previews</i>	23
<i>Color Blindness Simulation</i>	26
<i>CSS Examples</i>	29

Color

Hex(DDC5CE)

Conversions

Conversions Part 1

Format	Color
Hex	DDC5CE
RGB	221, 197, 206
RGB Percent	87%, 77%, 81%
CMY	0.1333, 0.2275, 0.1922
CMYK	0.00, 0.11, 0.07, 0.13
HSL	338°, 26%, 82%
HSV	338°, 11%, 87%
XYZ	60.9256, 59.7609, 66.7164
YIQ	205.2020, 11.4150, 7.8870

Conversions

Conversions Part 2

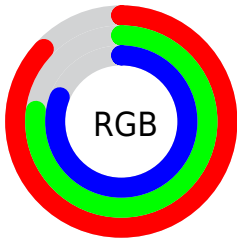
Format	Color
R _{YB}	221, 197, 206
Decimal	14534094
CIE Lab	81.71, 9.96, -1.41
CIE LCh	82, 10.056, 351.943
Yxy	59.7609, 0.3251, 0.3189
Android (android.graphics.Color)	4292724174 (0xFFDDC5CE)
YUV	205.2020, 0.3934, 13.8548
Hunter-Lab	77.3052, 5.3951, 2.9448

Details

The Hex color **DDC5CE** is a light color, and the websafe version is hex **CCCCCC**. A complement of this color would be **C5DDD4**, and the grayscale version is **CDCDCD**.

A 20% lighter version of the original color is **FFFEFF**, and **A68F98** is the 20% darker color. If you saturate the color by 10%, you get **DDAFC0**, and if you desaturate by 10%, it is **DDDBDC**.

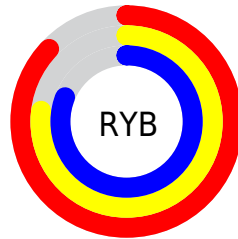
Distribution



Red (87%)

Green (77%)

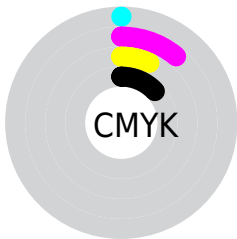
Blue (81%)



Red (87%)

Yellow (77%)

Blue (81%)

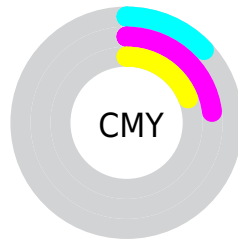


Cyan (0%)

Magenta (11%)

Yellow (7%)

Black (13%)



Cyan (13%)

Magenta (23%)

Yellow (19%)

Brightness & Saturation Gradients

These gradients show how the Hex color DDC5CE changes by changing the brightness by 10 percent. The first figure shows a shift by +10% for each color and the second figure -10%.

Similar to the brightness gradients but the following saturation gradients show a change of the Hex color DDC5CE by changing the saturation by 10% instead.

 DDC5CE

 DDC5CE

FFFFFF

 C1AAB3

FFFEFF

 A68F98

 8B767E

 725D65

 59454D

 422F36

 2B1A21

 18000A

 000000

 DDC5CE

 DDC5CE

 DDAFC0

 DDDBDC

 DD99B2

 DDF1EA

 DD83A5

 DDFFF7

 DD6D97

 DDFFFF

 DD5789

 DD407B

 DD2A6D

 DD1460

 DD0053

Harmonies

Analogous

The Analogous color harmony consists of three colors that are next to each other on the color wheel.



D5C7D7



DDC5CE



E0C5C4

Triad

The Triadic color harmony groups three colors that are evenly spaced from another and form a triangle on the color wheel.



DDC5CE



CBCDBA



B6CFDA

Complementary

The Complementary color scheme is a pair of colors which are on the opposite of each other on the color wheel.



DDC5CE



C5DDD4

Split Complementary

Split-complementary colors differ from the complementary color scheme. The scheme consists of three colors, the original color and two neighbors of the complement color.



B4D1D2



DDC5CE



C1CFBF

Square

The Square scheme is like the rectangle color scheme, but the four colors are evenly spaced on the color wheel.



DDC5CE



D6CAB9



B8D1C8



BFCDDD

Rectangle

The Rectangle color scheme consists of four colors that form a rectangle on the color wheel.



DDC5CE



DFC6BF



B8D1C8



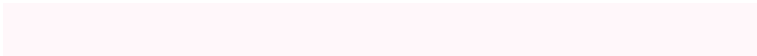
B5D0D7

Sweetspot

The Sweet Spot groups the original color and five complimentary colors.



DDC5CE



FFF7FA



D4C5DD



807A7C



000000



808080

Same Dimension

The Same Dimension uses a secret algorithm to generate beautiful new colors.



DDC5CE



FFDEEA



DDC8C5



6E6367



AD0041



2E0011

Inverse Universe

The Inverse Universe completely reimagines the original color for something new.



DDC5CE



FFDEEA



C5DADD



6E6367



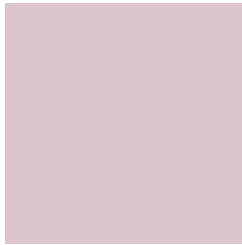
AD0041



2E0011

Previews

White Background



This preview shows how the Hex color DDC5CE looks on a white background.

Color Contrast Check

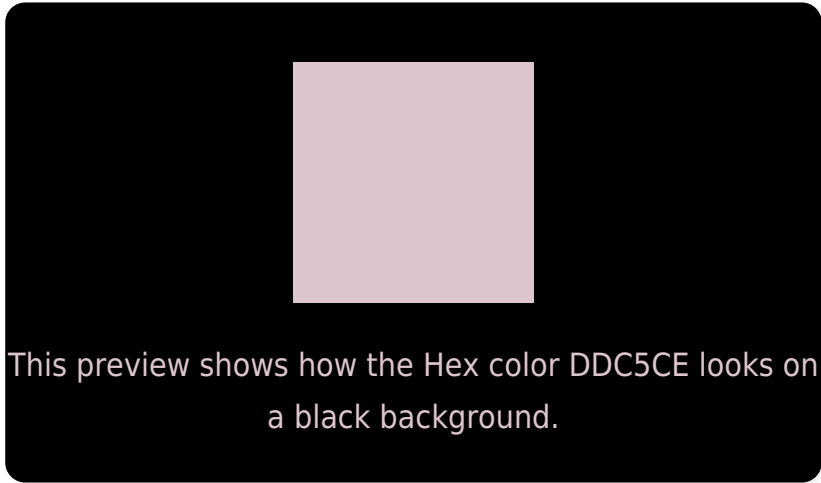
Large Text (above 18pt) WCAG AA × Fail

Any Text WCAG AA × Fail

Large Text (above 18pt) WCAG AAA × Fail

Any Text WCAG AAA × Fail

Black Background



Color Contrast Check

Large Text (above 18pt) WCAG AA ✓ Pass

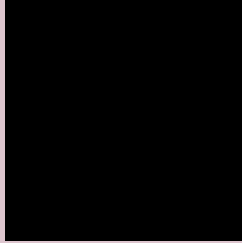
Any Text WCAG AA ✓ Pass

Large Text (above 18pt) WCAG AAA ✓ Pass

Any Text WCAG AAA ✓ Pass

If you want to check with other color combinations, try the [Color Contrast Checker](#).

Hex DDC5CE Background



This preview shows how black text looks on a background with the Hex color DDC5CE.



This preview shows how white text looks on a background with the Hex color DDC5CE.

Color Blindness Simulation

Color vision deficiency is a very complex topic, and I could not describe the different causes any better than Wikipedia does, so if you want to learn more, you should check out their [article about color blindness](#).

Dichromacy



Original Color
DDC5CE

Protanopia
CDCAD1

Deuteranopia
DDC5CE



Tritanopia
DEC4D3

Trichromacy



Original Color
DDC5CE

Protanomaly
D3C8D0

Deuteranomaly
DDC5CE

Tritanomaly
DEC4D1

Monochromacy



Original Color
DDC5CE

Achromatopsia
CDCDCD

Achromatomaly
D3CACD

CSS Examples

Text

The CSS property to change the color of the text to Hex DDC5CE is called "color". The color property can be set on classes, ids or directly on the HTML element.

This example shows how text in the color #DDC5CE looks like.

```
.text, #text, p{  
    color:#DDC5CE  
}
```

If you want to add a text shadow in that color use the text-shadow property, you can generate a text shadow directly with our [CSS Text Shadow Generator](#).

Here you see how black text with a 4 pixel #DDC5CE colored shadow looks like.

```
.shadow{ text-shadow: 4px 4px 2px #DDC5CE
}
```

Border

The CSS property to change the border of an element to Hex DDC5CE is called "border". The border property can be set on classes, ids or directly on the HTML element.

This example shows the color as border, it can be applied via the CSS property "border" or "border-color".

```
.border, #border, table{ border:4px solid
#DDC5CE }
```

If only the border color should be changed use the property `border-color`.

```
.border{ border-color:#DDC5CE }
```

If you want to add a box shadow in that color use:

Here you see how a box with a 4 pixel #DDC5CE colored shadow looks like.

```
.boxshadow{ -moz-box-shadow:4px 4px 4px  
4px #DDC5CE; -webkit-box-shadow:4px 4px  
4px 4px #DDC5CE; box-shadow:4px 4px 4px  
4px #DDC5CE }
```

Background

The CSS property to change the background color of an element to Hex DDC5CE is called "background". The background property can be set on classes, ids or directly on the HTML element.

```
.background, #background, body{  
background:#DDC5CE }
```

If only the background color should be changed can be used:

```
.background{ background-color:#DDC5CE }
```

This example shows the color as background, it is applied via the CSS property "background".

To optimize and compress your CSS code, you can use our [online CSS compressor and optimizer](#) based on csstidy. If you want to create a linear or radial gradient as background or border, check our [CSS Gradient Generator](#).

Hey! You found this booklet interesting? Support Converting Colors with the new Membership Option!

The pro membership hides all ads, plus gives you double the colors in the color bucket, and more awesome pro features!

[Learn more, Memberships starting at \\$2.50/m!](#)

**Follow me
on Twitter!**

@ConvertingColor