

Converting Colors

Hex(DDC6B6)

Have a look what the booklet for
Hex(DDC6B6) contains.

Hex(DDC6B6)	3
<i>Conversions</i>	4
<i>Details</i>	6
<i>Harmonies</i>	11
<i>Previews</i>	23
<i>Color Blindness Simulation</i>	26
<i>CSS Examples</i>	29

Color

Hex(DDC6B6)

Conversions

Conversions Part 1

Format	Color
Hex	DDC6B6
RGB	221, 198, 182
RGB Percent	87%, 78%, 71%
CMY	0.1333, 0.2235, 0.2863
CMYK	0.00, 0.10, 0.18, 0.13
HSL	25°, 36%, 79%
HSV	25°, 18%, 87%
XYZ	58.4564, 59.1377, 52.5897
YIQ	203.0530, 18.8440, -0.1000

Conversions

Conversions Part 2

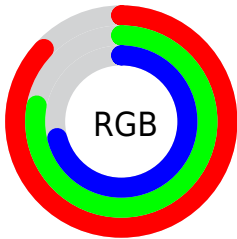
Format	Color
R _Y B	221, 209, 182
Decimal	14534326
CIE Lab	81.37, 5.52, 10.96
CIE LCh	81, 12.268, 63.252
Yxy	59.1377, 0.3435, 0.3475
Android (android.graphics.Color)	4292724406 (0xFFDDC6B6)
YUV	203.0530, -10.3791, 15.7395
Hunter-Lab	76.9011, 1.1100, 13.2846

Details

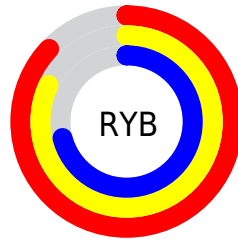
The Hex color **DDC6B6** is a light color, and the websafe version is hex **CCCCCC**. A complement of this color would be **B6CDDD**, and the grayscale version is **CBCBCB**.

A 20% lighter version of the original color is **FFFFEE**, and **A69081** is the 20% darker color. If you saturate the color by 10%, you get **DDB9A0**, and if you desaturate by 10%, it is **DDD3CC**.

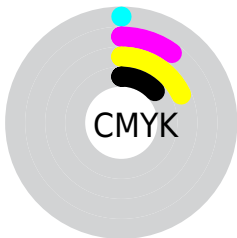
Distribution



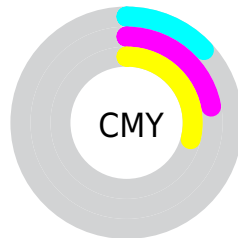
- Red (87%)
- Green (78%)
- Blue (71%)



- Red (87%)
- Yellow (82%)
- Blue (71%)



- Cyan (0%)
- Magenta (10%)
- Yellow (18%)
- Black (13%)



- Cyan (13%)
- Magenta (22%)
- Yellow (29%)

Brightness & Saturation Gradients

These gradients show how the Hex color DDC6B6 changes by changing the brightness by 10 percent. The first figure shows a shift by +10% for each color and the second figure -10%.

Similar to the brightness gradients but the following saturation gradients show a change of the Hex color DDC6B6 by changing the saturation by 10% instead.

 DDC6B6

 DDC6B6


FFFFFF

 C1AB9B

 FFFFEE

 A69081

 8B7768

 715E50

 584639

 413023

 2A1B0E

 130000

 000000

 DDC6B6

 DDC6B6

 DDB9A0

 DDD3CC

 DDAC8A

 DDE0E2

 DD9F74

 DDEDF8

 DD925E

 DDFAFF

 DD8548

 DDFFFF

 DD7831

 DD6B1B

 DD5E05

 DD5B00

Harmonies

Analogous

The Analogous color harmony consists of three colors that are next to each other on the color wheel.



E3C3BE



DDC6B6



D2CAB3

Triad

The Triadic color harmony groups three colors that are evenly spaced from another and form a triangle on the color wheel.



DDC6B6



B0D1CB



CEC7DD

Complementary

The Complementary color scheme is a pair of colors which are on the opposite of each other on the color wheel.



DDC6B6



B6CDDD

Split Complementary

Split-complementary colors differ from the complementary color scheme. The scheme consists of three colors, the original color and two neighbors of the complement color.



C0CBE1



DDC6B6



AED0D6

Square

The Square scheme is like the rectangle color scheme, but the four colors are evenly spaced on the color wheel.



DDC6B6



B9D0BF



B3CEDE



DBC4D5

Rectangle

The Rectangle color scheme consists of four colors that form a rectangle on the color wheel.



DDC6B6



CACCB5



B3CEDE



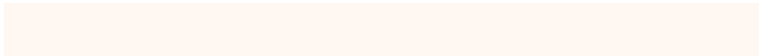
C9C8DF

Sweetspot

The Sweet Spot groups the original color and five complimentary colors.



DDC6B6



FFF7F2



DDB6CD



807B78



000000



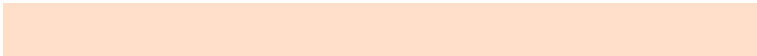
808080

Same Dimension

The Same Dimension uses a secret algorithm to generate beautiful new colors.



DDC6B6



FFDFC9



DDD9B6



6E6763



AD4700



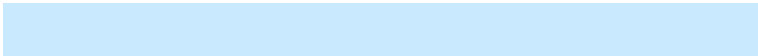
2E1300

Inverse Universe

The Inverse Universe completely reimagines the original color for something new.



B6CDDD



C9E9FF



B6BADD



63696E



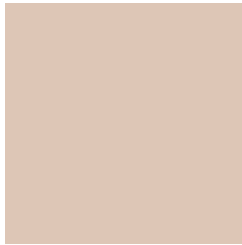
0066AD



001B2E

Previews

White Background



This preview shows how the Hex color DDC6B6 looks on a white background.

Color Contrast Check

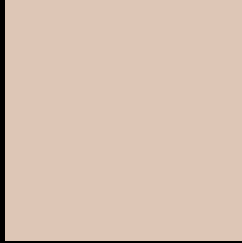
Large Text (above 18pt) WCAG AA × Fail

Any Text WCAG AA × Fail

Large Text (above 18pt) WCAG AAA × Fail

Any Text WCAG AAA × Fail

Black Background



This preview shows how the Hex color DDC6B6 looks on a black background.

Color Contrast Check

Large Text (above 18pt) WCAG AA ✓ Pass

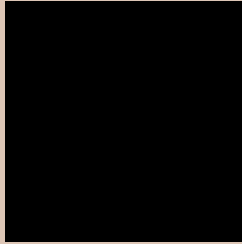
Any Text WCAG AA ✓ Pass

Large Text (above 18pt) WCAG AAA ✓ Pass

Any Text WCAG AAA ✓ Pass

If you want to check with other color combinations, try the [Color Contrast Checker](#).

Hex DDC6B6 Background



This preview shows how black text looks on a background with the Hex color DDC6B6.

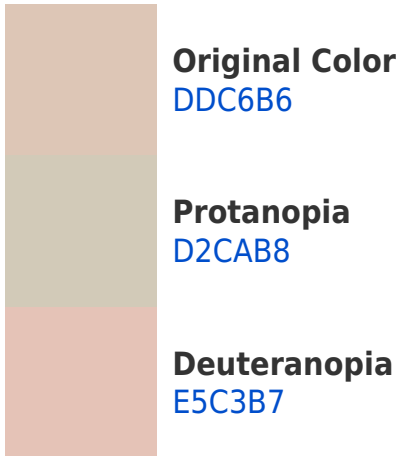


This preview shows how white text looks on a background with the Hex color DDC6B6.

Color Blindness Simulation

Color vision deficiency is a very complex topic, and I could not describe the different causes any better than Wikipedia does, so if you want to learn more, you should check out their [article about color blindness](#).

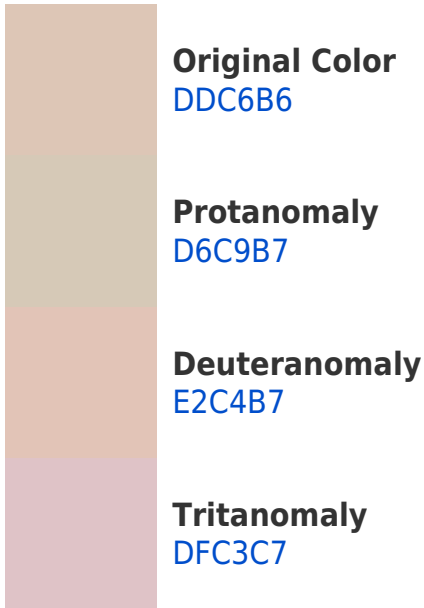
Dichromacy



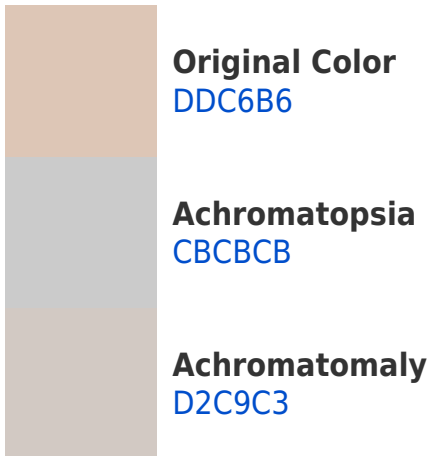


Tritanopia
E0C2D1

Trichromacy



Monochromacy



CSS Examples

Text

The CSS property to change the color of the text to Hex DDC6B6 is called "color". The color property can be set on classes, ids or directly on the HTML element.

This example shows how text in the color #DDC6B6 looks like.

```
.text, #text, p{  
    color:#DDC6B6  
}
```

If you want to add a text shadow in that color use the text-shadow property, you can generate a text shadow directly with our [CSS Text Shadow Generator](#).

Here you see how black text with a 4 pixel #DDC6B6 colored shadow looks like.

```
.shadow{ text-shadow: 4px 4px 2px #DDC6B6
}
```

Border

The CSS property to change the border of an element to Hex DDC6B6 is called "border". The border property can be set on classes, ids or directly on the HTML element.

This example shows the color as border, it can be applied via the CSS property "border" or "border-color".

```
.border, #border, table{ border:4px solid
#DDC6B6 }
```

If only the border color should be changed use the property `border-color`.

```
.border{ border-color:#DDC6B6 }
```

If you want to add a box shadow in that color use:

Here you see how a box with a 4 pixel #DDC6B6 colored shadow looks like.

```
.boxshadow{ -moz-box-shadow:4px 4px 4px  
4px #DDC6B6; -webkit-box-shadow:4px 4px  
4px 4px #DDC6B6; box-shadow:4px 4px 4px  
4px #DDC6B6 }
```

Background

The CSS property to change the background color of an element to Hex DDC6B6 is called "background". The background property can be set on classes, ids or directly on the HTML element.

```
.background, #background, body{  
background:#DDC6B6 }
```

If only the background color should be changed can be used:

```
.background{ background-color:#DDC6B6 }
```

This example shows the color as background, it is applied via the CSS property "background".

To optimize and compress your CSS code, you can use our [online CSS compressor and optimizer](#) based on csstidy. If you want to create a linear or radial gradient as background or border, check our [CSS Gradient Generator](#).

Hey! You found this booklet interesting? Support Converting Colors with the new Membership Option!

The pro membership hides all ads, plus gives you double the colors in the color bucket, and more awesome pro features!

[Learn more, Memberships starting at \\$2.50/m!](#)

**Follow me
on Twitter!**

@ConvertingColor