

Converting Colors

Hex(DDC6CF)

Have a look what the booklet for
Hex(DDC6CF) contains.

Hex(DDC6CF)	3
<i>Conversions</i>	4
<i>Details</i>	6
<i>Harmonies</i>	11
<i>Previews</i>	23
<i>Color Blindness Simulation</i>	26
<i>CSS Examples</i>	29

Color

Hex(DDC6CF)

Conversions

Conversions Part 1

Format	Color
Hex	DDC6CF
RGB	221, 198, 207
RGB Percent	87%, 78%, 81%
CMY	0.1333, 0.2235, 0.1882
CMYK	0.00, 0.10, 0.06, 0.13
HSL	337°, 25%, 82%
HSV	337°, 10%, 87%
XYZ	61.2754, 60.2653, 67.4343
YIQ	205.9030, 10.8190, 7.6750

Conversions

Conversions Part 2

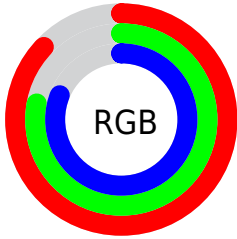
Format	Color
R_{YB}	221, 198, 207
Decimal	14534351
CIE _{Lab}	81.98, 9.60, -1.54
CIE _{LCh}	82, 9.722, 350.862
Yxy	60.2653, 0.3243, 0.3189
Android (android.graphics.Color)	4292724431 (0xFFDDC6CF)
YUV	205.9030, 0.5408, 13.2401
Hunter-Lab	77.6307, 5.0395, 2.8390

Details

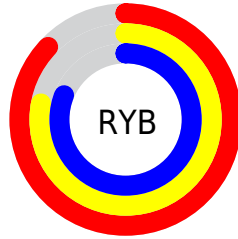
The Hex color **DDC6CF** is a light color, and the websafe version is hex **CCCCCC**. A complement of this color would be **C6DDD4**, and the grayscale version is **CECECE**.

A 20% lighter version of the original color is **FFFFFF**, and **A69099** is the 20% darker color. If you saturate the color by 10%, you get **DDB0C2**, and if you desaturate by 10%, it is **DDDCDC**.

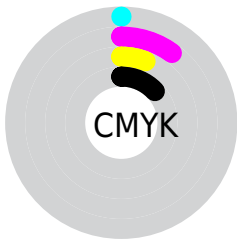
Distribution



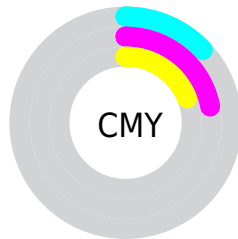
- Red (87%)
- Green (78%)
- Blue (81%)



- Red (87%)
- Yellow (78%)
- Blue (81%)



- Cyan (0%)
- Magenta (10%)
- Yellow (6%)
- Black (13%)



- Cyan (13%)
- Magenta (22%)
- Yellow (19%)

Brightness & Saturation Gradients

These gradients show how the Hex color DDC6CF changes by changing the brightness by 10 percent. The first figure shows a shift by +10% for each color and the second figure -10%.

Similar to the brightness gradients but the following saturation gradients show a change of the Hex color DDC6CF by changing the saturation by 10% instead.

 DDC6CF

FFFFFF

 DDC6CF

 C1ABB3

 A69099

 8B777F

 725E66

 59464E

 423037

 2B1B22

 18000B

 000000

 DDC6CF

 DDC6CF

 DDB0C2

 DDDCDC

 DD9AB4

 DDF2EA

 DD84A7

 DDFFF7

 DD6E99

 DDFFFF

 DD588C

 DD417E

 DD2B71

 DD1563

 DD0056

Harmonies

Analogous

The Analogous color harmony consists of three colors that are next to each other on the color wheel.



D5C8D7



DDC6CF



E0C6C6

Triad

The Triadic color harmony groups three colors that are evenly spaced from another and form a triangle on the color wheel.



DDC6CF



CDCDBB



B8D0DA

Complementary

The Complementary color scheme is a pair of colors which are on the opposite of each other on the color wheel.



DDC6CF



C6DDD4

Split Complementary

Split-complementary colors differ from the complementary color scheme. The scheme consists of three colors, the original color and two neighbors of the complement color.



B5D1D2



DDC6CF



C2D0C0

Square

The Square scheme is like the rectangle color scheme, but the four colors are evenly spaced on the color wheel.



DDC6CF



D6CABA



B9D1C9



BFCDDDE

Rectangle

The Rectangle color scheme consists of four colors that form a rectangle on the color wheel.



DDC6CF



DFC7C0



B9D1C9



B6D1D7

Sweetspot

The Sweet Spot groups the original color and five complimentary colors.



DDC6CF



FFF7FA



D4C6DD



807A7C



000000



808080

Same Dimension

The Same Dimension uses a secret algorithm to generate beautiful new colors.



DDC6CF



FFE0EC



DDC8C6



6E6367



AD0044



2E0012

Inverse Universe

The Inverse Universe completely reimagines the original color for something new.



DDC6CF



FFE0EC



C6DBDD



6E6367



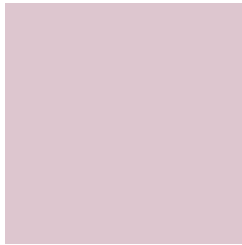
AD0044



2E0012

Previews

White Background



This preview shows how the Hex color DDC6CF looks on a white background.

Color Contrast Check

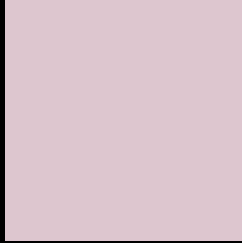
Large Text (above 18pt) WCAG AA × Fail

Any Text WCAG AA × Fail

Large Text (above 18pt) WCAG AAA × Fail

Any Text WCAG AAA × Fail

Black Background



This preview shows how the Hex color DDC6CF looks on a black background.

Color Contrast Check

Large Text (above 18pt) WCAG AA ✓ Pass

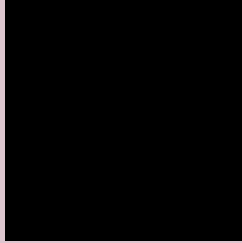
Any Text WCAG AA ✓ Pass

Large Text (above 18pt) WCAG AAA ✓ Pass

Any Text WCAG AAA ✓ Pass

If you want to check with other color combinations, try the [Color Contrast Checker](#).

Hex DDC6CF Background



This preview shows how black text looks on a background with the Hex color DDC6CF.



This preview shows how white text looks on a background with the Hex color DDC6CF.

Color Blindness Simulation

Color vision deficiency is a very complex topic, and I could not describe the different causes any better than Wikipedia does, so if you want to learn more, you should check out their [article about color blindness](#).

Dichromacy



Original Color
DDC6CF

Protanopia
CECBD2

Deuteranopia
DEC6CF

Trichromacy



Original Color
DDC6CF

Protanomaly
D3C9D1

Deuteranomaly
DEC6CF

Tritanomaly
DEC5D3

Monochromacy



Original Color
DDC6CF

Achromatopsia
CECECE

Achromatomaly
D3CBCE

CSS Examples

Text

The CSS property to change the color of the text to Hex DDC6CF is called "color". The color property can be set on classes, ids or directly on the HTML element.

This example shows how text in the color #DDC6CF looks like.

```
.text, #text, p{  
    color:#DDC6CF  
}
```

If you want to add a text shadow in that color use the text-shadow property, you can generate a text shadow directly with our [CSS Text Shadow Generator](#).

Here you see how black text with a 4 pixel #DDC6CF colored shadow looks like.

```
.shadow{ text-shadow: 4px 4px 2px #DDC6CF
}
```

Border

The CSS property to change the border of an element to Hex DDC6CF is called "border". The border property can be set on classes, ids or directly on the HTML element.

This example shows the color as border, it can be applied via the CSS property "border" or "border-color".

```
.border, #border, table{ border:4px solid
#DDC6CF }
```

If only the border color should be changed use the property `border-color`.

```
.border{ border-color:#DDC6CF }
```

If you want to add a box shadow in that color use:

Here you see how a box with a 4 pixel #DDC6CF colored shadow looks like.

```
.boxshadow{ -moz-box-shadow:4px 4px 4px  
4px #DDC6CF; -webkit-box-shadow:4px 4px  
4px 4px #DDC6CF; box-shadow:4px 4px 4px  
4px #DDC6CF }
```

Background

The CSS property to change the background color of an element to Hex DDC6CF is called "background". The background property can be set on classes, ids or directly on the HTML element.

```
.background, #background, body{  
background:#DDC6CF }
```

If only the background color should be changed can be used:

```
.background{ background-color:#DDC6CF }
```

This example shows the color as background, it is applied via the CSS property "background".

To optimize and compress your CSS code, you can use our [online CSS compressor and optimizer](#) based on csstidy. If you want to create a linear or radial gradient as background or border, check our [CSS Gradient Generator](#).

Hey! You found this booklet interesting? Support Converting Colors with the new Membership Option!

The pro membership hides all ads, plus gives you double the colors in the color bucket, and more awesome pro features!

[Learn more, Memberships starting at \\$2.50/m!](#)

**Follow me
on Twitter!**

@ConvertingColor