

Converting Colors

Hex(DDC8C4)

Have a look what the booklet for
Hex(DDC8C4) contains.

Hex(DDC8C4)	3
<i>Conversions</i>	4
<i>Details</i>	6
<i>Harmonies</i>	11
<i>Previews</i>	23
<i>Color Blindness Simulation</i>	26
<i>CSS Examples</i>	29

Color

Hex(DDC8C4)

Conversions

Conversions Part 1

Format	Color
Hex	DDC8C4
RGB	221, 200, 196
RGB Percent	87%, 78%, 77%
CMY	0.1333, 0.2157, 0.2314
CMYK	0.00, 0.10, 0.11, 0.13
HSL	10°, 27%, 82%
HSV	10°, 11%, 87%
XYZ	60.4369, 60.6662, 60.7489
YIQ	205.8230, 13.8000, 3.2080

Conversions

Conversions Part 2

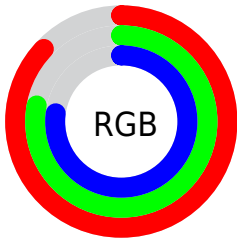
Format	Color
R _Y B	221, 201, 196
Decimal	14534852
CIE Lab	82.20, 6.69, 4.66
CIE LCh	82, 8.149, 34.883
Yxy	60.6662, 0.3323, 0.3336
Android (android.graphics.Color)	4292724932 (0xFFDDC8C4)
YUV	205.8230, -4.8427, 13.3102
Hunter-Lab	77.8885, 2.2005, 8.2789

Details

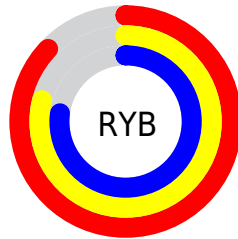
The Hex color **DDC8C4** is a light color, and the websafe version is hex **CCCCCC**. A complement of this color would be **C4D9DD**, and the grayscale version is **CECECE**.

A 20% lighter version of the original color is **FFFFFFD**, and **A6928E** is the 20% darker color. If you saturate the color by 10%, you get **DDB5AE**, and if you desaturate by 10%, it is **DDDBDA**.

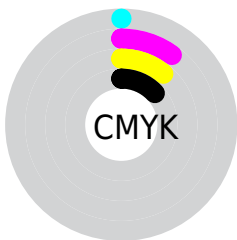
Distribution



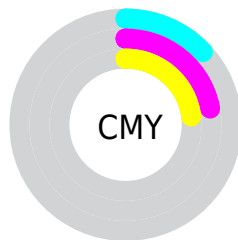
- Red (87%)
- Green (78%)
- Blue (77%)



- Red (87%)
- Yellow (79%)
- Blue (77%)



- Cyan (0%)
- Magenta (10%)
- Yellow (11%)
- Black (13%)



- Cyan (13%)
- Magenta (22%)
- Yellow (23%)

Brightness & Saturation Gradients

These gradients show how the Hex color DDC8C4 changes by changing the brightness by 10 percent. The first figure shows a shift by +10% for each color and the second figure -10%.

Similar to the brightness gradients but the following saturation gradients show a change of the Hex color DDC8C4 by changing the saturation by 10% instead.

■ DDC8C4

FFFFFF

FFFFFFD

■ DDC8C4

■ C1ADA9

■ A6928E

■ 8B7875

■ 72605C

■ 594845

■ 41312E

■ 2B1C1A

■ 180200

■ 000000

 DDC8C4

 DDC8C4

 DDB5AE

 DDDBDA

 DDA398

 DDEDF0

 DD9082

 DDFFFF

 DD7E6C

 DD6B56

 DD593F

 DD4629

 DD3313

 DD2300

Harmonies

Analogous

The Analogous color harmony consists of three colors that are next to each other on the color wheel.



DDC7CB



DDC8C4



D9CABF

Triad

The Triadic color harmony groups three colors that are evenly spaced from another and form a triangle on the color wheel.



DDC8C4



C1D0C6



C6CDDC

Complementary

The Complementary color scheme is a pair of colors which are on the opposite of each other on the color wheel.



DDC8C4



C4D9DD

Split Complementary

Split-complementary colors differ from the complementary color scheme. The scheme consists of three colors, the original color and two neighbors of the complement color.



BECFDA



DDC8C4



BBD1CD

Square

The Square scheme is like the rectangle color scheme, but the four colors are evenly spaced on the color wheel.



DDC8C4



C9CFC0



BAD1D5



D0CAD9

Rectangle

The Rectangle color scheme consists of four colors that form a rectangle on the color wheel.



DDC8C4



D4CBBD



BAD1D5



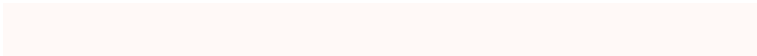
C3CDDB

Sweetspot

The Sweet Spot groups the original color and five complimentary colors.



`DDC8C4`



`FFF9F7`



`DDC4D9`



`807B7A`



`000000`



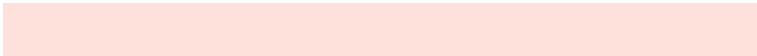
`808080`

Same Dimension

The Same Dimension uses a secret algorithm to generate beautiful new colors.



DDC8C4



FFE1DB



DDD4C4



6E6463



AD1C00



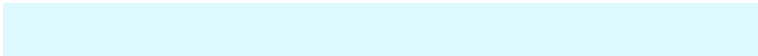
2E0700

Inverse Universe

The Inverse Universe completely reimagines the original color for something new.



C4D9DD



DBF9FF



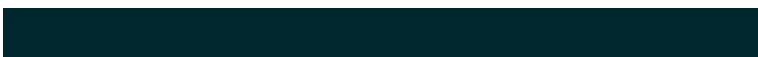
C4CDDD



636C6E



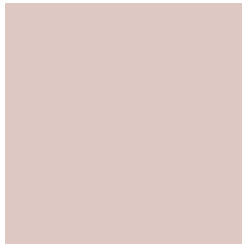
0092AD



00272E

Previews

White Background



This preview shows how the Hex color DDC8C4 looks on a white background.

Color Contrast Check

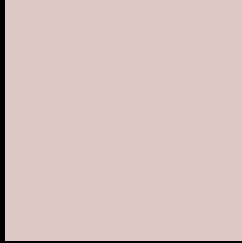
Large Text (above 18pt) WCAG AA × Fail

Any Text WCAG AA × Fail

Large Text (above 18pt) WCAG AAA × Fail

Any Text WCAG AAA × Fail

Black Background



This preview shows how the Hex color DDC8C4 looks on a black background.

Color Contrast Check

Large Text (above 18pt) WCAG AA ✓ Pass

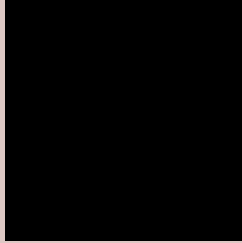
Any Text WCAG AA ✓ Pass

Large Text (above 18pt) WCAG AAA ✓ Pass

Any Text WCAG AAA ✓ Pass

If you want to check with other color combinations, try the [Color Contrast Checker](#).

Hex DDC8C4 Background



This preview shows how black text looks on a background with the Hex color DDC8C4.

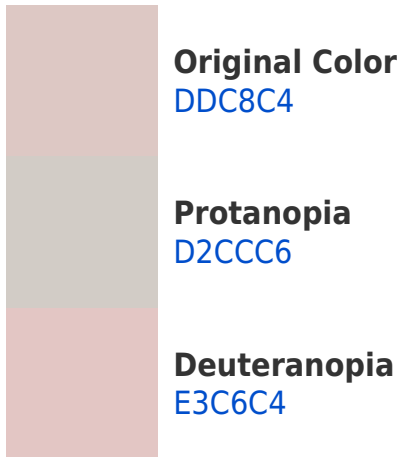


This preview shows how white text looks on a background with the Hex color DDC8C4.

Color Blindness Simulation

Color vision deficiency is a very complex topic, and I could not describe the different causes any better than Wikipedia does, so if you want to learn more, you should check out their [article about color blindness](#).

Dichromacy





Tritanopia
DFC5D5

Trichromacy



Original Color
DDC8C4

Protanomaly
D6CBC5

Deuteranomaly
E1C7C4

Tritanomaly
DEC6CF

Monochromacy



Original Color
DDC8C4

Achromatopsia
CECECE

Achromatomaly
D3CCCA

CSS Examples

Text

The CSS property to change the color of the text to Hex DDC8C4 is called "color". The color property can be set on classes, ids or directly on the HTML element.

This example shows how text in the color #DDC8C4 looks like.

```
.text, #text, p{  
    color:#DDC8C4  
}
```

If you want to add a text shadow in that color use the text-shadow property, you can generate a text shadow directly with our [CSS Text Shadow Generator](#).

Here you see how black text with a 4 pixel #DDC8C4 colored shadow looks like.

```
.shadow{ text-shadow: 4px 4px 2px #DDC8C4
}
```

Border

The CSS property to change the border of an element to Hex DDC8C4 is called "border". The border property can be set on classes, ids or directly on the HTML element.

This example shows the color as border, it can be applied via the CSS property "border" or "border-color".

```
.border, #border, table{ border:4px solid
#DDC8C4 }
```

If only the border color should be changed use the property `border-color`.

```
.border{ border-color:#DDC8C4 }
```

If you want to add a box shadow in that color use:

Here you see how a box with a 4 pixel #DDC8C4 colored shadow looks like.

```
.boxshadow{ -moz-box-shadow:4px 4px 4px  
4px #DDC8C4; -webkit-box-shadow:4px 4px  
4px 4px #DDC8C4; box-shadow:4px 4px 4px  
4px #DDC8C4 }
```

Background

The CSS property to change the background color of an element to Hex DDC8C4 is called "background". The background property can be set on classes, ids or directly on the HTML element.

```
.background, #background, body{  
background:#DDC8C4 }
```

If only the background color should be changed can be used:

```
.background{ background-color:#DDC8C4 }
```

This example shows the color as background, it is applied via the CSS property "background".

To optimize and compress your CSS code, you can use our [online CSS compressor and optimizer](#) based on csstidy. If you want to create a linear or radial gradient as background or border, check our [CSS Gradient Generator](#).

Hey! You found this booklet interesting? Support Converting Colors with the new Membership Option!

The pro membership hides all ads, plus gives you double the colors in the color bucket, and more awesome pro features!

[Learn more, Memberships starting at \\$2.50/m!](#)

**Follow me
on Twitter!**

@ConvertingColor