

Converting Colors

Hex(DDC9B7)

Have a look what the booklet for
Hex(DDC9B7) contains.

Hex(DDC9B7)	3
<i>Conversions</i>	4
<i>Details</i>	6
<i>Harmonies</i>	11
<i>Previews</i>	23
<i>Color Blindness Simulation</i>	26
<i>CSS Examples</i>	29

Color

Hex(DDC9B7)

Conversions

Conversions Part 1

Format	Color
Hex	DDC9B7
RGB	221, 201, 183
RGB Percent	87%, 79%, 72%
CMY	0.1333, 0.2118, 0.2824
CMYK	0.00, 0.09, 0.17, 0.13
HSL	28°, 36%, 79%
HSV	28°, 17%, 87%
XYZ	59.2527, 60.5643, 53.3669
YIQ	204.9280, 17.6980, -1.3580

Conversions

Conversions Part 2

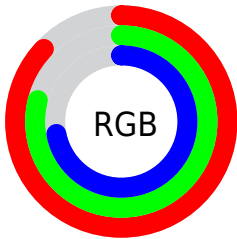
Format	Color
R _Y B	221, 217, 183
Decimal	14535095
CIE Lab	82.14, 4.10, 11.53
CIE LCh	82, 12.231, 70.437
Yxy	60.5643, 0.3421, 0.3497
Android (android.graphics.Color)	4292725175 (0xFFD9C9B7)
YUV	204.9280, -10.8105, 14.0951
Hunter-Lab	77.8231, -0.2847, 13.8183

Details

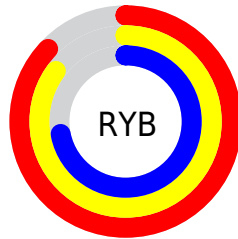
The Hex color **DDC9B7** is a light color, and the websafe version is hex **CCCCCC**. A complement of this color would be **B7CBDD**, and the grayscale version is **CDCDCD**.

A 20% lighter version of the original color is **FFFFFF**, and **A69382** is the 20% darker color. If you saturate the color by 10%, you get **DDBDA1**, and if you desaturate by 10%, it is **DDD5CD**.

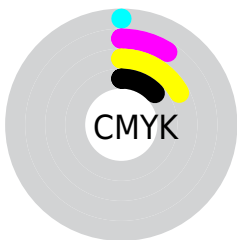
Distribution



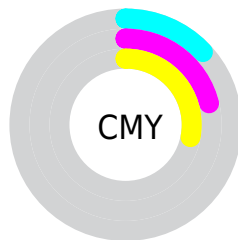
- Red (87%)
- Green (79%)
- Blue (72%)



- Red (87%)
- Yellow (85%)
- Blue (72%)



- Cyan (0%)
- Magenta (9%)
- Yellow (17%)
- Black (13%)



- Cyan (13%)
- Magenta (21%)
- Yellow (28%)

Brightness & Saturation Gradients

These gradients show how the Hex color DDC9B7 changes by changing the brightness by 10 percent. The first figure shows a shift by +10% for each color and the second figure -10%.

Similar to the brightness gradients but the following saturation gradients show a change of the Hex color DDC9B7 by changing the saturation by 10% instead.

 DDC9B7

FFFFFFF

 FFFFEF

 DDC9B7

 C1AE9C

 A69382

 8B7969

 716151

 59493A

 413224

 2A1D0F

 140400

 000000

 DDC9B7

 DDC9B7

 DDBDA1

 DDD5CD

 DDB28B

 DDE0E3

 DDA675

 DDECF9

 DD9A5F

 DDF8FF

 DD8F49

 DDFFFF

 DD8332

 DD781C

 DD6C06

 DD6900

Harmonies

Analogous

The Analogous color harmony consists of three colors that are next to each other on the color wheel.



E4C6BE



DDC9B7



D2CDB6

Triad

The Triadic color harmony groups three colors that are evenly spaced from another and form a triangle on the color wheel.



DDC9B7



B1D3D0



D4C8DE

Complementary

The Complementary color scheme is a pair of colors which are on the opposite of each other on the color wheel.



DDC9B7



B7CBDD

Split Complementary

Split-complementary colors differ from the complementary color scheme. The scheme consists of three colors, the original color and two neighbors of the complement color.



C5CCE3



DDC9B7



B0D2DB

Square

The Square scheme is like the rectangle color scheme, but the four colors are evenly spaced on the color wheel.



DDC9B7



B8D3C4



B8D0E2



DFC5D4

Rectangle

The Rectangle color scheme consists of four colors that form a rectangle on the color wheel.



DDC9B7



C9CFB8



B8D0E2



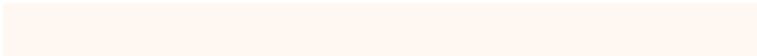
CFC9E0

Sweetspot

The Sweet Spot groups the original color and five complimentary colors.



DDC9B7



FFF8F2



DDB7CB



807B78



000000



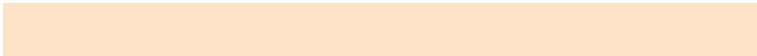
808080

Same Dimension

The Same Dimension uses a secret algorithm to generate beautiful new colors.



DDC9B7



FFE3C9



DDDCB7



6E6863



AD5200



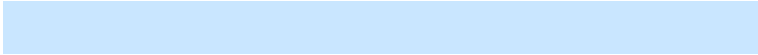
2E1600

Inverse Universe

The Inverse Universe completely reimagines the original color for something new.



B7CBDD



C9E6FF



B7B8DD



63686E



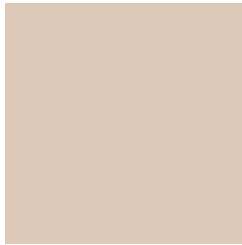
005BAD



00182E

Previews

White Background



This preview shows how the Hex color DDC9B7 looks on a white background.

Color Contrast Check

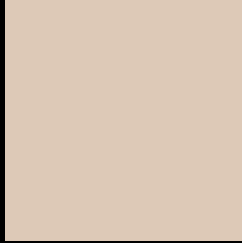
Large Text (above 18pt) WCAG AA × Fail

Any Text WCAG AA × Fail

Large Text (above 18pt) WCAG AAA × Fail

Any Text WCAG AAA × Fail

Black Background



This preview shows how the Hex color DDC9B7 looks on a black background.

Color Contrast Check

Large Text (above 18pt) WCAG AA ✓ Pass

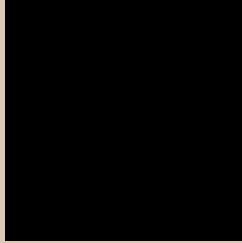
Any Text WCAG AA ✓ Pass

Large Text (above 18pt) WCAG AAA ✓ Pass

Any Text WCAG AAA ✓ Pass

If you want to check with other color combinations, try the [Color Contrast Checker](#).

Hex DDC9B7 Background



This preview shows how black text looks on a background with the Hex color DDC9B7.

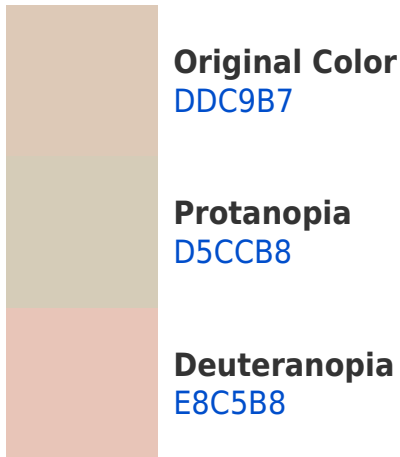


This preview shows how white text looks on a background with the Hex color DDC9B7.

Color Blindness Simulation

Color vision deficiency is a very complex topic, and I could not describe the different causes any better than Wikipedia does, so if you want to learn more, you should check out their [article about color blindness](#).

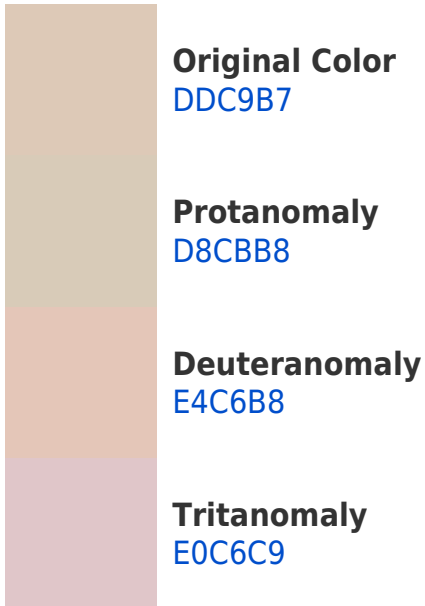
Dichromacy



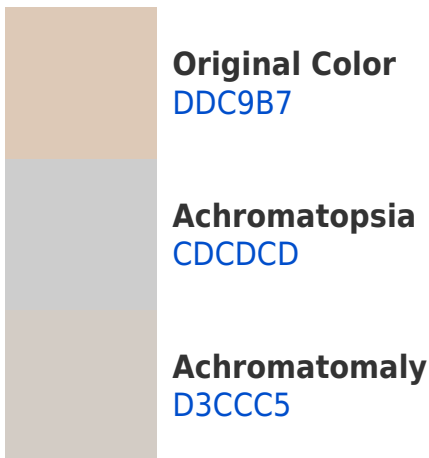


Tritanopia
E1C5D4

Trichromacy



Monochromacy



CSS Examples

Text

The CSS property to change the color of the text to Hex DDC9B7 is called "color". The color property can be set on classes, ids or directly on the HTML element.

This example shows how text in the color #DDC9B7 looks like.

```
.text, #text, p{  
    color:#DDC9B7  
}
```

If you want to add a text shadow in that color use the text-shadow property, you can generate a text shadow directly with our [CSS Text Shadow Generator](#).

Here you see how black text with a 4 pixel #DDC9B7 colored shadow looks like.

```
.shadow{ text-shadow: 4px 4px 2px #DDC9B7
}
```

Border

The CSS property to change the border of an element to Hex DDC9B7 is called "border". The border property can be set on classes, ids or directly on the HTML element.

This example shows the color as border, it can be applied via the CSS property "border" or "border-color".

```
.border, #border, table{ border:4px solid
#DDC9B7 }
```

If only the border color should be changed use the property `border-color`.

```
.border{ border-color:#DDC9B7 }
```

If you want to add a box shadow in that color use:

Here you see how a box with a 4 pixel #DDC9B7 colored shadow looks like.

```
.boxshadow{ -moz-box-shadow:4px 4px 4px  
4px #DDC9B7; -webkit-box-shadow:4px 4px  
4px 4px #DDC9B7; box-shadow:4px 4px 4px  
4px #DDC9B7 }
```

Background

The CSS property to change the background color of an element to Hex DDC9B7 is called "background". The background property can be set on classes, ids or directly on the HTML element.

```
.background, #background, body{  
background:#DDC9B7 }
```

If only the background color should be changed can be used:

```
.background{ background-color:#DDC9B7 }
```

This example shows the color as background, it is applied via the CSS property "background".

To optimize and compress your CSS code, you can use our [online CSS compressor and optimizer](#) based on csstidy. If you want to create a linear or radial gradient as background or border, check our [CSS Gradient Generator](#).

Hey! You found this booklet interesting? Support Converting Colors with the new Membership Option!

The pro membership hides all ads, plus gives you double the colors in the color bucket, and more awesome pro features!

[Learn more, Memberships starting at \\$2.50/m!](#)

**Follow me
on Twitter!**

@ConvertingColor