

Converting Colors

Hex(DE3E6D)

Have a look what the booklet for
Hex(DE3E6D) contains.

| | |
|--|----|
| Hex(DE3E6D) | 3 |
| <i>Conversions</i> | 4 |
| <i>Details</i> | 6 |
| <i>Harmonies</i> | 11 |
| <i>Previews</i> | 23 |
| <i>Color Blindness Simulation</i> | 26 |
| <i>CSS Examples</i> | 29 |

Color

Hex(DE3E6D)

Conversions

Conversions Part 1

| Format | Color |
|---------------|----------------------------|
| Hex | DE3E6D |
| RGB | 222, 62, 109 |
| RGB Percent | 87%, 24%, 43% |
| CMY | 0.1294, 0.7569, 0.5725 |
| CMYK | 0.00, 0.72, 0.51, 0.13 |
| HSL | 342°, 71%, 56% |
| HSV | 342°, 72%, 87% |
| XYZ | 34.6071, 20.0790, 16.5196 |
| YIQ | 115.1980, 80.2730, 48.5370 |

Conversions

Conversions Part 2

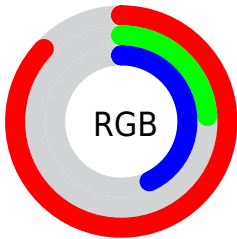
| Format | Color |
|-------------------------------------|-------------------------------|
| R_{YB} | 222, 62, 109 |
| Decimal | 14564973 |
| CIE _{Lab} | 51.93, 64.25, 10.44 |
| CIE _{LCh} | 52, 65.094, 9.233 |
| Yxy | 20.0790, 0.4860, 0.2820 |
| Android (android.graphics.Color) | 4292755053 (0xFFDE3E6D) |
| YUV | 115.1980, -3.0556, 93.6654 |
| Hunter-Lab | 44.8096, 59.4417, 9.5087 |

Details

The Hex color **DE3E6D** is a dark color, and the websafe version is hex **CC3366**. The color can be described as dark muted rose. A complement of this color would be **3EDEAF**, and the grayscale version is **737373**.

A 20% lighter version of the original color is **FF79A0**, and **A1003E** is the 20% darker color. If you saturate the color by 10%, you get **DE285D**, and if you desaturate by 10%, it is **DE547D**.

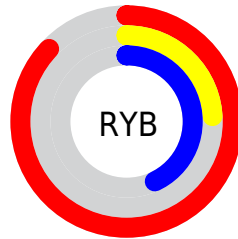
Distribution



Red (87%)

Green (24%)

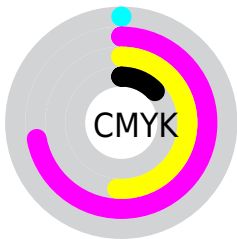
Blue (43%)



Red (87%)

Yellow (24%)

Blue (43%)

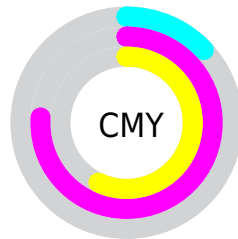


Cyan (0%)

Magenta (72%)

Yellow (51%)

Black (13%)



Cyan (13%)

Magenta (76%)

Yellow (57%)

Brightness & Saturation Gradients

These gradients show how the Hex color DE3E6D changes by changing the brightness by 10 percent. The first figure shows a shift by +10% for each color and the second figure -10%.

Similar to the brightness gradients but the following saturation gradients show a change of the Hex color DE3E6D by changing the saturation by 10% instead.

 DE3E6D

 DE3E6D

FFFFFF

 BF1955

 FF79A0

 A1003E

 FF96BB

 830029

 FFB2D7

 650015

 FFD0F3

 490003

 FFEDFF

 2A0001

 000000

 DE3E6D

 DE3E6D

 DE285D

 DE547D

 DE124E

 DE6A8C

 DE0041

 DE819C

 DE97AC

 DEADBB

 DEC3CB

 DED9DB

 DEF0EA

 DEFFFA

Harmonies

Analogous

The Analogous color harmony consists of three colors that are next to each other on the color wheel.



CB49A5



DE3E6D



D45138

Triad

The Triadic color harmony groups three colors that are evenly spaced from another and form a triangle on the color wheel.



DE3E6D



478C17



008CE4

Complementary

The Complementary color scheme is a pair of colors which are on the opposite of each other on the color wheel.



DE3E6D



3EDEAF

Split Complementary

Split-complementary colors differ from the complementary color scheme. The scheme consists of three colors, the original color and two neighbors of the complement color.



0094C1



DE3E6D



009252

Square

The Square scheme is like the rectangle color scheme, but the four colors are evenly spaced on the color wheel.



DE3E6D



857F00



00958C



007DEB

Rectangle

The Rectangle color scheme consists of four colors that form a rectangle on the color wheel.



DE3E6D



C06213



00958C



0090DB

Sweetspot

The Sweet Spot groups the original color and five complimentary colors.



DE3E6D



FFC7D7



AE3EDE



805E68



000000



808080

Same Dimension

The Same Dimension uses a secret algorithm to generate beautiful new colors.



DE3E6D



FF2464



DE5E3E



706568



B00034



30000E

Inverse Universe

The Inverse Universe completely reimagines the original color for something new.



DE3E6D



FF2464



3EBEDE



706568



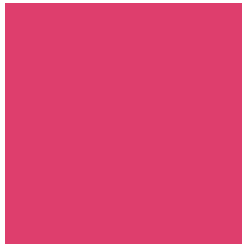
B00034



30000E

Previews

White Background



This preview shows how the Hex color DE3E6D looks on a white background.

Color Contrast Check

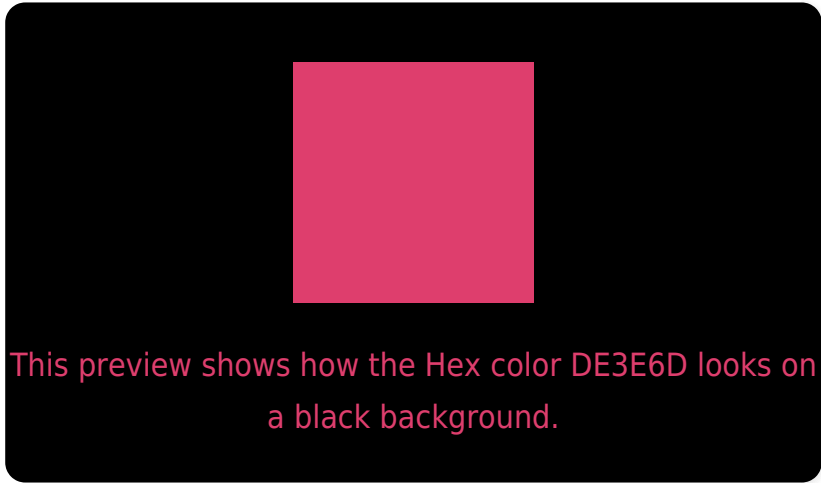
Large Text (above 18pt) WCAG AA ✓ Pass

Any Text WCAG AA ✗ Fail

Large Text (above 18pt) WCAG AAA ✗ Fail

Any Text WCAG AAA ✗ Fail

Black Background



Color Contrast Check

Large Text (above 18pt) WCAG AA ✓ Pass

Any Text WCAG AA ✓ Pass

Large Text (above 18pt) WCAG AAA ✓ Pass

Any Text WCAG AAA × Fail

If you want to check with other color combinations, try the [Color Contrast Checker](#).

Hex DE3E6D Background



This preview shows how black text looks on a background with the Hex color DE3E6D.

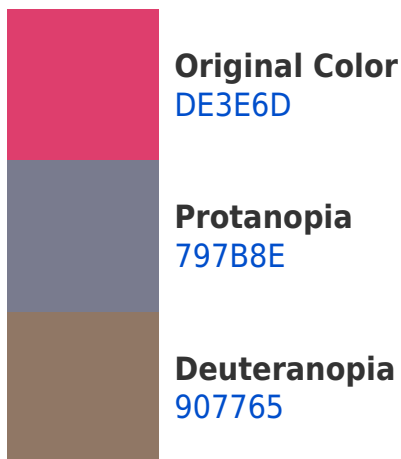


This preview shows how white text looks on a background with the Hex color DE3E6D.

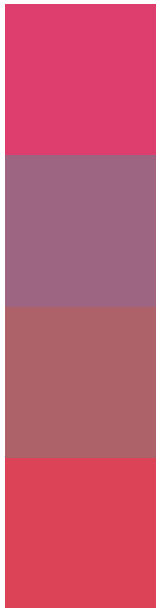
Color Blindness Simulation

Color vision deficiency is a very complex topic, and I could not describe the different causes any better than Wikipedia does, so if you want to learn more, you should check out their [article about color blindness](#).

Dichromacy



Trichromacy



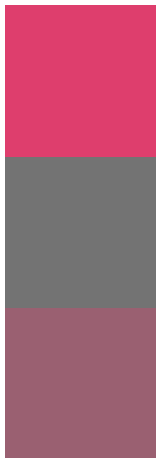
Original Color
DE3E6D

Protanomaly
9E6582

Deuteranomaly
AC6268

Tritanomaly
DD4357

Monochromacy



Original Color
DE3E6D

Achromatopsia
737373

Achromatomaly
9A6071

CSS Examples

Text

The CSS property to change the color of the text to Hex DE3E6D is called "color". The color property can be set on classes, ids or directly on the HTML element.

This example shows how text in the color #DE3E6D looks like.

```
.text, #text, p{  
    color:#DE3E6D  
}
```

If you want to add a text shadow in that color use the text-shadow property, you can generate a text shadow directly with our [CSS Text Shadow Generator](#).

Here you see how black text with a 4 pixel #DE3E6D colored shadow looks like.

```
.shadow{ text-shadow: 4px 4px 2px #DE3E6D
}
```

Border

The CSS property to change the border of an element to Hex DE3E6D is called "border". The border property can be set on classes, ids or directly on the HTML element.

This example shows the color as border, it can be applied via the CSS property "border" or "border-color".

```
.border, #border, table{ border:4px solid
#DE3E6D }
```

If only the border color should be changed use the property `border-color`.

```
.border{ border-color:#DE3E6D }
```

If you want to add a box shadow in that color use:

Here you see how a box with a 4 pixel #DE3E6D colored shadow looks like.

```
.boxshadow{ -moz-box-shadow:4px 4px 4px  
4px #DE3E6D; -webkit-box-shadow:4px 4px  
4px 4px #DE3E6D; box-shadow:4px 4px 4px  
4px #DE3E6D }
```

Background

The CSS property to change the background color of an element to Hex DE3E6D is called "background". The background property can be set on classes, ids or directly on the HTML element.

```
.background, #background, body{  
background:#DE3E6D }
```

If only the background color should be changed can be used:

```
.background{ background-color:#DE3E6D }
```

This example shows the color as background, it is applied via the CSS property "background".

To optimize and compress your CSS code, you can use our [online CSS compressor and optimizer](#) based on csstidy. If you want to create a linear or radial gradient as background or border, check our [CSS Gradient Generator](#).

Hey! You found this booklet interesting? Support Converting Colors with the new Membership Option!

The pro membership hides all ads, plus gives you double the colors in the color bucket, and more awesome pro features!

[Learn more, Memberships starting at \\$2.50/m!](#)

**Follow me
on Twitter!**

@ConvertingColor