

Converting Colors

Hex(DE4782)

Have a look what the booklet for
Hex(DE4782) contains.

Hex(DE4782)	3
<i>Conversions</i>	4
<i>Details</i>	6
<i>Harmonies</i>	11
<i>Previews</i>	23
<i>Color Blindness Simulation</i>	26
<i>CSS Examples</i>	29

Color

Hex(DE4782)

Conversions

Conversions Part 1

Format	Color
Hex	DE4782
RGB	222, 71, 130
RGB Percent	87%, 28%, 51%
CMY	0.1294, 0.7216, 0.4902
CMYK	0.00, 0.68, 0.41, 0.13
HSL	337°, 70%, 57%
HSV	337°, 68%, 87%
XYZ	36.4067, 21.6478, 23.3787
YIQ	122.8750, 71.0570, 50.3610

Conversions

Conversions Part 2

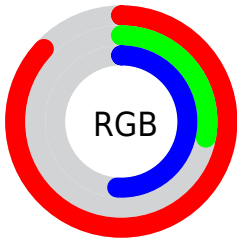
Format	Color
R_{YB}	222, 71, 130
Decimal	14567298
CIE _{Lab}	53.65, 62.90, 0.33
CIE _{LCh}	54, 62.901, 0.298
Yxy	21.6478, 0.4471, 0.2658
Android (android.graphics.Color)	4292757378 (0xFFDE4782)
YUV	122.8750, 3.5126, 86.9326
Hunter-Lab	46.5272, 58.2506, 2.7773

Details

The Hex color **DE4782** is a dark color, and the websafe version is hex **CC3366**. The color can be described as middle muted rose. A complement of this color would be **47DEA3**, and the grayscale version is **7B7B7B**.

A 20% lighter version of the original color is **FF81B7**, and **A20051** is the 20% darker color. If you saturate the color by 10%, you get **DE3174**, and if you desaturate by 10%, it is **DE5D90**.

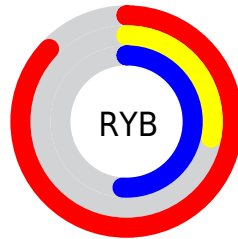
Distribution



Red (87%)

Green (28%)

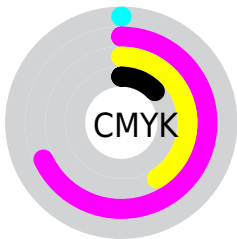
Blue (51%)



Red (87%)

Yellow (28%)

Blue (51%)

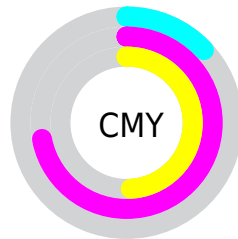


Cyan (0%)

Magenta (68%)

Yellow (41%)

Black (13%)



Cyan (13%)

Magenta (72%)

Yellow (49%)

Brightness & Saturation Gradients

These gradients show how the Hex color DE4782 changes by changing the brightness by 10 percent. The first figure shows a shift by +10% for each color and the second figure -10%.

Similar to the brightness gradients but the following saturation gradients show a change of the Hex color DE4782 by changing the saturation by 10% instead.

 DE4782

 DE4782

FFFFFF

 C02669

 FF81B7

 A20051

 FF9DD2

 84003A

 FFBAEF

 670025

 FFD7FF

 4B000F

 FFF5FF

 2F0002

 000000

 DE4782

 DE4782

 DE3174

 DE5D90

 DE1B67

 DE739D

 DE0459

 DE8AAB

 DE0057

 DEA0B8

 DEB6C6

 DECCD3

 DEE2E1

 DEF9EE

 DEFFFC

Harmonies

Analogous

The Analogous color harmony consists of three colors that are next to each other on the color wheel.



C157B7



DE4782



DC514D

Triad

The Triadic color harmony groups three colors that are evenly spaced from another and form a triangle on the color wheel.



DE4782



638D10



0093DE

Complementary

The Complementary color scheme is a pair of colors which are on the opposite of each other on the color wheel.



DE4782



47DEA3

Split Complementary

Split-complementary colors differ from the complementary color scheme. The scheme consists of three colors, the original color and two neighbors of the complement color.



0099B6



DE4782



009547

Square

The Square scheme is like the rectangle color scheme, but the four colors are evenly spaced on the color wheel.



DE4782



997E00



00997F



0087ED

Rectangle

The Rectangle color scheme consists of four colors that form a rectangle on the color wheel.



DE4782



CE602C



00997F



0096D3

Sweetspot

The Sweet Spot groups the original color and five complimentary colors.



DE4782



FFCCE0



A247DE



80616D



000000



808080

Same Dimension

The Same Dimension uses a secret algorithm to generate beautiful new colors.



DE4782



FF2E80



DE5647



706569



B00045



300013

Inverse Universe

The Inverse Universe completely reimagines the original color for something new.



DE4782



FF2E80



47CFDE



706569



B00045



300013

Previews

White Background



This preview shows how the Hex color DE4782 looks on a white background.

Color Contrast Check

Large Text (above 18pt) WCAG AA ✓ Pass

Any Text WCAG AA × Fail

Large Text (above 18pt) WCAG AAA × Fail

Any Text WCAG AAA × Fail

Black Background



Color Contrast Check

Large Text (above 18pt) WCAG AA ✓ Pass

Any Text WCAG AA ✓ Pass

Large Text (above 18pt) WCAG AAA ✓ Pass

Any Text WCAG AAA × Fail

If you want to check with other color combinations, try the [Color Contrast Checker](#).

Hex DE4782 Background



This preview shows how black text looks on a background with the Hex color DE4782.



This preview shows how white text looks on a background with the Hex color DE4782.

Color Blindness Simulation

Color vision deficiency is a very complex topic, and I could not describe the different causes any better than Wikipedia does, so if you want to learn more, you should check out their [article about color blindness](#).

Dichromacy

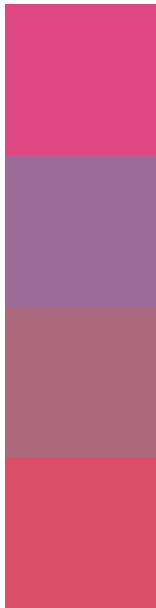


Original Color
DE4782

Protanopia
777FA5

Deuteranopia
8F7C7B

Trichromacy



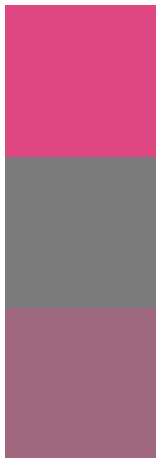
Original Color
DE4782

Protanomaly
9C6B98

Deuteranomaly
AC697E

Tritanomaly
DC4D66

Monochromacy



Original Color
DE4782

Achromatopsia
7B7B7B

Achromatomaly
9F687E

CSS Examples

Text

The CSS property to change the color of the text to Hex DE4782 is called "color". The color property can be set on classes, ids or directly on the HTML element.

This example shows how text in the color #DE4782 looks like.

```
.text, #text, p{  
    color:#DE4782  
}
```

If you want to add a text shadow in that color use the text-shadow property, you can generate a text shadow directly with our [CSS Text Shadow Generator](#).

Here you see how black text with a 4 pixel #DE4782 colored shadow looks like.

```
.shadow{ text-shadow: 4px 4px 2px #DE4782
}
```

Border

The CSS property to change the border of an element to Hex DE4782 is called "border". The border property can be set on classes, ids or directly on the HTML element.

This example shows the color as border, it can be applied via the CSS property "border" or "border-color".

```
.border, #border, table{ border:4px solid
#DE4782 }
```

If only the border color should be changed use the property `border-color`.

```
.border{ border-color:#DE4782 }
```

If you want to add a box shadow in that color use:

Here you see how a box with a 4 pixel #DE4782 colored shadow looks like.

```
.boxshadow{ -moz-box-shadow:4px 4px 4px  
4px #DE4782; -webkit-box-shadow:4px 4px  
4px 4px #DE4782; box-shadow:4px 4px 4px  
4px #DE4782 }
```

Background

The CSS property to change the background color of an element to Hex DE4782 is called "background". The background property can be set on classes, ids or directly on the HTML element.

```
.background, #background, body{  
background:#DE4782 }
```

If only the background color should be changed can be used:

```
.background{ background-color:#DE4782 }
```

This example shows the color as background, it is applied via the CSS property "background".

To optimize and compress your CSS code, you can use our [online CSS compressor and optimizer](#) based on csstidy. If you want to create a linear or radial gradient as background or border, check our [CSS Gradient Generator](#).

Hey! You found this booklet interesting? Support Converting Colors with the new Membership Option!

The pro membership hides all ads, plus gives you double the colors in the color bucket, and more awesome pro features!

[Learn more, Memberships starting at \\$2.50/m!](#)

**Follow me
on Twitter!**

@ConvertingColor