

# Converting Colors

Hex(DE6078)

Have a look what the booklet for  
Hex(DE6078) contains.

<b>Hex(DE6078)</b> .....	3
<i><b>Conversions</b></i> .....	4
<i><b>Details</b></i> .....	6
<i><b>Harmonies</b></i> .....	11
<i><b>Previews</b></i> .....	23
<i><b>Color Blindness Simulation</b></i> .....	26
<i><b>CSS Examples</b></i> .....	29

# Color

**Hex(DE6078)**

# Conversions

## Conversions Part 1

<b>Format</b>	<b>Color</b>
Hex	DE6078
RGB	222, 96, 120
RGB Percent	87%, 38%, 47%
CMY	0.1294, 0.6235, 0.5294
CMYK	0.00, 0.57, 0.46, 0.13
HSL	349°, 66%, 62%
HSV	349°, 57%, 87%
XYZ	37.6972, 25.2514, 20.6564
YIQ	136.4100, 67.3920, 34.1760

# Conversions

## Conversions Part 2

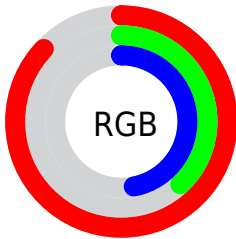
<b>Format</b>	<b>Color</b>
<b>RYB</b>	222, 96, 120
Decimal	14573688
CIELab	57.32, 51.33, 11.49
CIElCh	57, 52.600, 12.621
Yxy	25.2514, 0.4509, 0.3020
Android (android.graphics.Color)	4292763768 (0xFFDE6078)
YUV	136.4100, -8.0901, 75.0624
Hunter-Lab	50.2508, 45.9687, 10.8034

# Details

The Hex color **DE6078** is a dark color, and the websafe version is hex **CC6666**. A complement of this color would be **60DEC6**, and the grayscale version is **888888**.

A 20% lighter version of the original color is **FF97AC**, and **A22848** is the 20% darker color. If you saturate the color by 10%, you get **DE4A66**, and if you desaturate by 10%, it is **DE768A**.

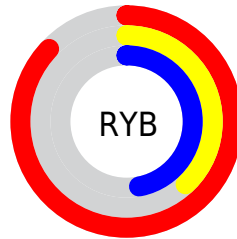
# Distribution



Red (87%)

Green (38%)

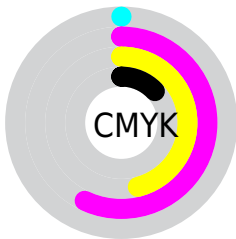
Blue (47%)



Red (87%)

Yellow (38%)

Blue (47%)

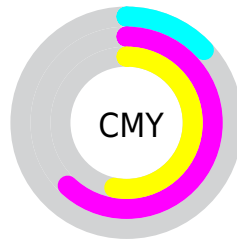


Cyan (0%)

Magenta (57%)

Yellow (46%)

Black (13%)



Cyan (13%)

Magenta (62%)

Yellow (53%)

# Brightness & Saturation Gradients

These gradients show how the Hex color DE6078 changes by changing the brightness by 10 percent. The first figure shows a shift by +10% for each color and the second figure -10%.

Similar to the brightness gradients but the following saturation gradients show a change of the Hex color DE6078 by changing the saturation by 10% instead.



 DE6078

 DE6078

FFFFFF

 C0455F

 FF97AC

 A22848

 FFB3C7

 850032

 FFCFE3

 68001D

 FFECCF

 4D0002

 320002

 000000

 DE6078

 DE6078

 DE4A66

 DE768A

 DE3454

 DE8C9C

 DE1D42

 DEA3AE

 DE0730

 DEB9C0

 DE002A

 DECFD2

 DEE5E4

 DEFBF6

 DEFFFF

# Harmonies

## Analogous

The Analogous color harmony consists of three colors that are next to each other on the color wheel.



D064A6



DE6078



D46C4D

# Triad

The Triadic color harmony groups three colors that are evenly spaced from another and form a triangle on the color wheel.



DE6078



5D9842



0096E1

# Complementary

The Complementary color scheme is a pair of colors which are on the opposite of each other on the color wheel.



DE6078



60DEC6

# Split Complementary

Split-complementary colors differ from the complementary color scheme. The scheme consists of three colors, the original color and two neighbors of the complement color.



009EC7



DE6078



009E6D

# Square

The Square scheme is like the rectangle color scheme, but the four colors are evenly spaced on the color wheel.



DE6078



908D28



00A09C



5888E3

# Rectangle

The Rectangle color scheme consists of four colors that form a rectangle on the color wheel.



DE6078



C37837



00A09C



0099DB



# Sweetspot

The Sweet Spot groups the original color and five complimentary colors.



DE6078



FFD4DC



C560DE



80666B



000000



808080



# Same Dimension

The Same Dimension uses a secret algorithm to generate beautiful new colors.



DE6078



FF5273



DE8660



706567



B00022



300009



# Inverse Universe

The Inverse Universe completely reimagines the original color for something new.



DE6078



FF5273



60B8DE



706567



B00022



300009



# Previews

## White Background



This preview shows how the Hex color DE6078 looks on a white background.

## Color Contrast Check

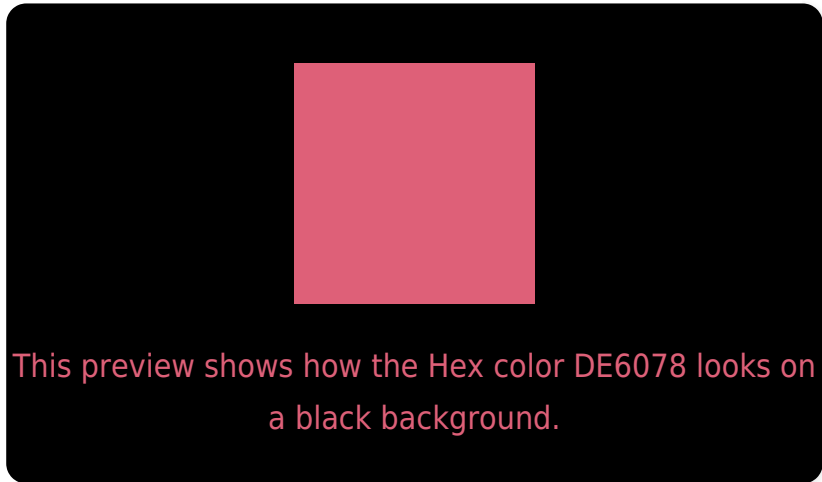
Large Text (above 18pt) WCAG AA ✓ Pass

Any Text WCAG AA × Fail

Large Text (above 18pt) WCAG AAA × Fail

Any Text WCAG AAA × Fail

# Black Background



## Color Contrast Check

Large Text (above 18pt) WCAG AA ✓ Pass

Any Text WCAG AA ✓ Pass

Large Text (above 18pt) WCAG AAA ✓ Pass

Any Text WCAG AAA × Fail

If you want to check with other color combinations, try the [Color Contrast Checker](#).



## Hex DE6078 Background



This preview shows how black text looks on a background with the Hex color DE6078.

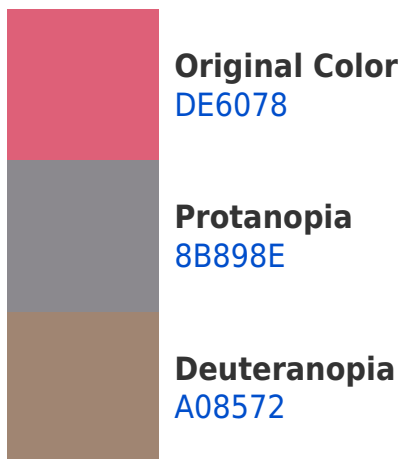


This preview shows how white text looks on a background with the Hex color DE6078.

# Color Blindness Simulation

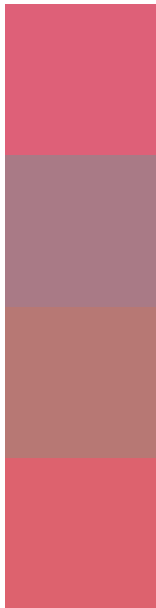
Color vision deficiency is a very complex topic, and I could not describe the different causes any better than Wikipedia does, so if you want to learn more, you should check out their [article about color blindness](#).

## Dichromacy





# Trichromacy



**Original Color**  
DE6078

**Protanomaly**  
A97A86

**Deuteranomaly**  
B77874

**Tritanomaly**  
DD626E

# Monochromacy



**Original Color**  
DE6078

**Achromatopsia**  
888888

**Achromatomaly**  
A77982

# CSS Examples

## Text

The CSS property to change the color of the text to Hex DE6078 is called "color". The color property can be set on classes, ids or directly on the HTML element.

This example shows how text in the color #DE6078 looks like.

```
.text, #text, p{  
    color:#DE6078  
}
```

If you want to add a text shadow in that color use the text-shadow property, you can generate a text shadow directly with our [CSS Text Shadow Generator](#).

Here you see how black text with a 4 pixel #DE6078 colored shadow looks like.

```
.shadow{ text-shadow: 4px 4px 2px #DE6078
}
```

## Border

The CSS property to change the border of an element to Hex DE6078 is called "border". The border property can be set on classes, ids or directly on the HTML element.

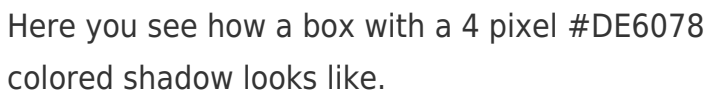
This example shows the color as border, it can be applied via the CSS property "border" or "border-color".

```
.border, #border, table{ border:4px solid
#DE6078 }
```

If only the border color should be changed use the property `border-color`.

```
.border{ border-color:#DE6078 }
```

If you want to add a box shadow in that color use:



Here you see how a box with a 4 pixel `#DE6078` colored shadow looks like.

```
.boxshadow{ -moz-box-shadow:4px 4px 4px  
4px #DE6078; -webkit-box-shadow:4px 4px  
4px 4px #DE6078; box-shadow:4px 4px 4px  
4px #DE6078 }
```

# Background

The CSS property to change the background color of an element to Hex DE6078 is called "background". The background property can be set on classes, ids or directly on the HTML element.

```
.background, #background, body{  
background:#DE6078 }
```

If only the background color should be changed can be used:

```
.background{ background-color:#DE6078 }
```

This example shows the color as background, it is applied via the CSS property "background".

To optimize and compress your CSS code, you can use our [online CSS compressor and optimizer](#) based on csstidy. If you want to create a linear or radial gradient as background or border, check our [CSS Gradient Generator](#).



Hey! You found this booklet interesting? Support Converting Colors with the new Membership Option!

The pro membership hides all ads, plus gives you double the colors in the color bucket, and more awesome pro features!

**[Learn more, Memberships starting at \\$2.50/m!](#)**

**Follow me  
on Twitter!**

@ConvertingColor