

# Converting Colors

Hex(DE8097)

Have a look what the booklet for  
Hex(DE8097) contains.

<b>Hex(DE8097)</b> .....	3
<b><i>Conversions</i></b> .....	4
<b><i>Details</i></b> .....	6
<b><i>Harmonies</i></b> .....	11
<b><i>Previews</i></b> .....	23
<b><i>Color Blindness Simulation</i></b> .....	26
<b><i>CSS Examples</i></b> .....	29

# **Color**

**Hex(DE8097)**

# Conversions

## Conversions Part 1

Format	Color
Hex	DE8097
RGB	222, 128, 151
RGB Percent	87%, 50%, 59%
CMY	0.1294, 0.4980, 0.4078
CMYK	0.00, 0.42, 0.32, 0.13
HSL	345°, 59%, 69%
HSV	345°, 42%, 87%
XYZ	43.4293, 33.2023, 33.3979
YIQ	158.7280, 48.6410, 27.0810

# Conversions

## Conversions Part 2

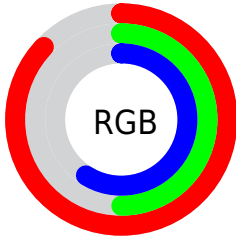
Format	Color
R <sub>Y</sub> B	222, 128, 151
Decimal	14581911
CIE Lab	64.32, 38.88, 3.61
CIE LCh	64, 39.051, 5.304
Yxy	33.2023, 0.3947, 0.3018
Android (android.graphics.Color)	4292771991 (0xFFDE8097)
YUV	158.7280, -3.8099, 55.4895
Hunter-Lab	57.6214, 33.6980, 5.9700

# Details

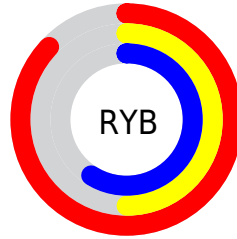
The Hex color **DE8097** is a light color, and the websafe version is hex **FF9999**. A complement of this color would be **80DEC7**, and the grayscale version is **9F9F9F**.

A 20% lighter version of the original color is **FFB6CD**, and **A44C64** is the 20% darker color. If you saturate the color by 10%, you get **DE6A86**, and if you desaturate by 10%, it is **DE96A8**.

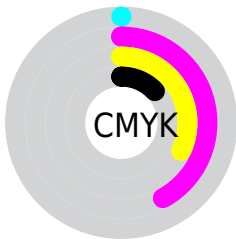
# Distribution



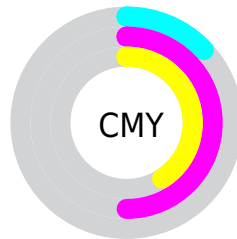
- Red (87%)
- Green (50%)
- Blue (59%)



- Red (87%)
- Yellow (50%)
- Blue (59%)



- Cyan (0%)
- Magenta (42%)
- Yellow (32%)
- Black (13%)



- Cyan (13%)
- Magenta (50%)
- Yellow (41%)

# Brightness & Saturation Gradients

These gradients show how the Hex color DE8097 changes by changing the brightness by 10 percent. The first figure shows a shift by +10% for each color and the second figure -10%.

Similar to the brightness gradients but the following saturation gradients show a change of the Hex color DE8097 by changing the saturation by 10% instead.



 DE8097

 DE8097

FFFFFF

 C1667D

 FFB6CD

 A44C64

 FFD2E9

 88334C

 FFEFFF

 6D1936

 520021

 390009

 1C0001

 000000

 DE8097

 DE8097

 DE6A86

 DE96A8

 DE5475

 DEACB9

 DE3D65

 DEC3C9

 DE2754

 DED9DA

 DE1143

 DEEFEB

 DE0036

 DEFFFC

 DEFFFF

# Harmonies

## Analogous

The Analogous color harmony consists of three colors that are next to each other on the color wheel.



CD85BA



DE8097



DC8575

# Triad

The Triadic color harmony groups three colors that are evenly spaced from another and form a triangle on the color wheel.



DE8097



87A662



23A7DB

# Complementary

The Complementary color scheme is a pair of colors which are on the opposite of each other on the color wheel.



DE8097



80DEC7

# Split Complementary

Split-complementary colors differ from the complementary color scheme. The scheme consists of three colors, the original color and two neighbors of the complement color.



00ADC3



DE8097



5BAC7E

# Square

The Square scheme is like the rectangle color scheme, but the four colors are evenly spaced on the color wheel.



DE8097



AC9C55



1AAEA1



719DE1

# Rectangle

The Rectangle color scheme consists of four colors that form a rectangle on the color wheel.



DE8097



D18C64



1AAEA1



00AAD4



# Sweetspot

The Sweet Spot groups the original color and five complimentary colors.



DE8097



FFDEE6



C780DE



806B70



000000



808080



# Same Dimension

The Same Dimension uses a secret algorithm to generate beautiful new colors.



DE8097



FF7D9D



DE9880



706568



B0002B



30000C



# Inverse Universe

The Inverse Universe completely reimagines the original color for something new.



DE8097



FF7D9D



80C7DE



706568



B0002B



30000C



# Previews

## White Background



This preview shows how the Hex color DE8097 looks on a white background.

## Color Contrast Check

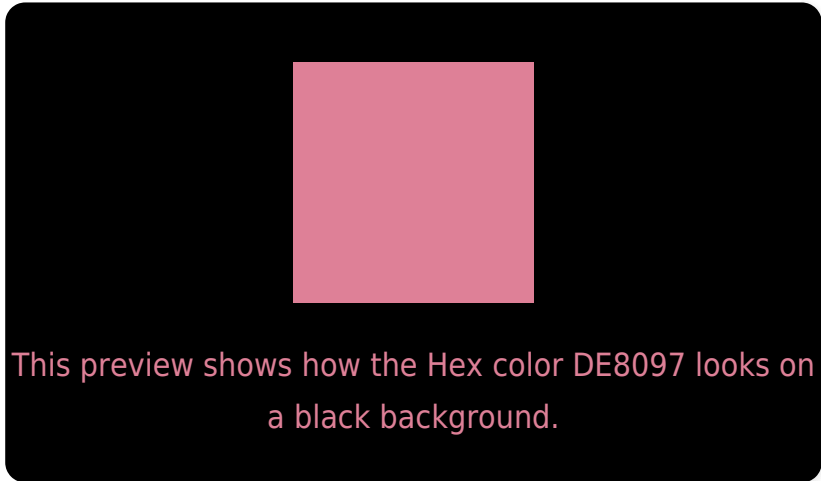
Large Text (above 18pt) WCAG AA × Fail

Any Text WCAG AA × Fail

Large Text (above 18pt) WCAG AAA × Fail

Any Text WCAG AAA × Fail

# Black Background



## Color Contrast Check

Large Text (above 18pt) WCAG AA ✓ Pass

Any Text WCAG AA ✓ Pass

Large Text (above 18pt) WCAG AAA ✓ Pass

Any Text WCAG AAA ✓ Pass

If you want to check with other color combinations, try the [Color Contrast Checker](#).



## Hex DE8097 Background



This preview shows how black text looks on a background with the Hex color DE8097.



This preview shows how white text looks on a background with the Hex color DE8097.

# Color Blindness Simulation

Color vision deficiency is a very complex topic, and I could not describe the different causes any better than Wikipedia does, so if you want to learn more, you should check out their [article about color blindness](#).

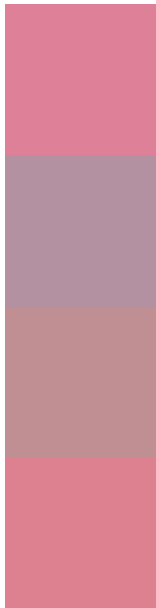
## Dichromacy





**Tritanopia**  
DD828C

# Trichromacy



**Original Color**  
DE8097

**Protanomaly**  
B491A1

**Deuteranomaly**  
C08F94

**Tritanomaly**  
DD8190

# Monochromacy



**Original Color**  
DE8097

**Achromatopsia**  
9F9F9F

**Achromatomaly**  
B6949C

# CSS Examples

## Text

The CSS property to change the color of the text to Hex DE8097 is called "color". The color property can be set on classes, ids or directly on the HTML element.

This example shows how text in the color #DE8097 looks like.

```
.text, #text, p{  
    color:#DE8097  
}
```

If you want to add a text shadow in that color use the text-shadow property, you can generate a text shadow directly with our [CSS Text Shadow Generator](#).

Here you see how black text with a 4 pixel #DE8097 colored shadow looks like.

```
.shadow{ text-shadow: 4px 4px 2px #DE8097
}
```

## Border

The CSS property to change the border of an element to Hex DE8097 is called "border". The border property can be set on classes, ids or directly on the HTML element.

This example shows the color as border, it can be applied via the CSS property "border" or "border-color".

```
.border, #border, table{ border:4px solid
#DE8097 }
```

If only the border color should be changed use the property `border-color`.

```
.border{ border-color:#DE8097 }
```

If you want to add a box shadow in that color use:

Here you see how a box with a 4 pixel #DE8097 colored shadow looks like.

```
.boxshadow{ -moz-box-shadow:4px 4px 4px  
4px #DE8097; -webkit-box-shadow:4px 4px  
4px 4px #DE8097; box-shadow:4px 4px 4px  
4px #DE8097 }
```

# Background

The CSS property to change the background color of an element to Hex DE8097 is called "background". The background property can be set on classes, ids or directly on the HTML element.

```
.background, #background, body{  
background:#DE8097 }
```

If only the background color should be changed can be used:

```
.background{ background-color:#DE8097 }
```

This example shows the color as background, it is applied via the CSS property "background".

To optimize and compress your CSS code, you can use our [online CSS compressor and optimizer](#) based on csstidy. If you want to create a linear or radial gradient as background or border, check our [CSS Gradient Generator](#).



Hey! You found this booklet interesting? Support Converting Colors with the new Membership Option!

The pro membership hides all ads, plus gives you double the colors in the color bucket, and more awesome pro features!

**[Learn more, Memberships starting at \\$2.50/m!](#)**

**Follow me  
on Twitter!**

@ConvertingColor