

Converting Colors

Hex(DEA0B2)

Have a look what the booklet for
Hex(DEA0B2) contains.

Hex(DEA0B2)	3
<i>Conversions</i>	4
<i>Details</i>	6
<i>Harmonies</i>	11
<i>Previews</i>	23
<i>Color Blindness Simulation</i>	26
<i>CSS Examples</i>	29

Color

Hex(DEA0B2)

Conversions

Conversions Part 1

Format	Color
Hex	DEA0B2
RGB	222, 160, 178
RGB Percent	87%, 63%, 70%
CMY	0.1294, 0.3725, 0.3020
CMYK	0.00, 0.28, 0.20, 0.13
HSL	343°, 48%, 75%
HSV	343°, 28%, 87%
XYZ	50.7309, 43.8856, 47.9164
YIQ	180.5900, 31.1740, 18.7420

Conversions

Conversions Part 2

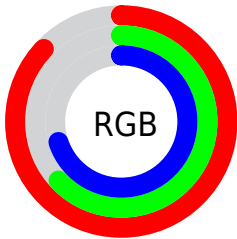
Format	Color
R _Y B	222, 160, 178
Decimal	14590130
CIE Lab	72.15, 25.62, -0.14
CIE LCh	72, 25.620, 359.686
Yxy	43.8856, 0.3559, 0.3079
Android (android.graphics.Color)	4292780210 (0xFFDEA0B2)
YUV	180.5900, -1.2769, 36.3166
Hunter-Lab	66.2462, 20.7633, 3.4874

Details

The Hex color **DEA0B2** is a light color, and the websafe version is hex **CC9999**. A complement of this color would be **A0DECC**, and the grayscale version is **B5B5B5**.

A 20% lighter version of the original color is **FFD7EA**, and **A66C7D** is the 20% darker color. If you saturate the color by 10%, you get **DE8AA2**, and if you desaturate by 10%, it is **DEB6C2**.

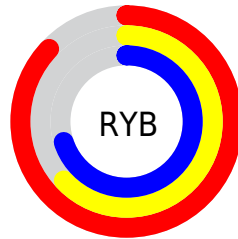
Distribution



Red (87%)

Green (63%)

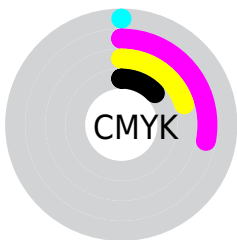
Blue (70%)



Red (87%)

Yellow (63%)

Blue (70%)

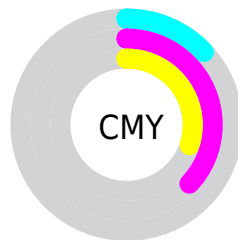


Cyan (0%)

Magenta (28%)

Yellow (20%)

Black (13%)



Cyan (13%)

Magenta (37%)

Yellow (30%)

Brightness & Saturation Gradients

These gradients show how the Hex color DEA0B2 changes by changing the brightness by 10 percent. The first figure shows a shift by +10% for each color and the second figure -10%.

Similar to the brightness gradients but the following saturation gradients show a change of the Hex color DEA0B2 by changing the saturation by 10% instead.

 DEA0B2

 DEA0B2

FFFFFF

 C28697

 FFD7EA

 A66C7D

 FFF4FF

 8B5365

 703B4D

 572436

 3E0D21

 290009

 000000

 DEA0B2

 DEA0B2

 DE8AA2

 DEB6C2

 DE7492

 DECCD2

 DE5D83

 DEE3E1

 DE4773

 DEF9F1

 DE3163

 DEFFFF

 DE1B53

 DE0544

 DE0040

Harmonies

Analogous

The Analogous color harmony consists of three colors that are next to each other on the color wheel.



CFA4C9



DEA0B2



E0A29B

Triad

The Triadic color harmony groups three colors that are evenly spaced from another and form a triangle on the color wheel.



DEA0B2



A9B688



77BAD9

Complementary

The Complementary color scheme is a pair of colors which are on the opposite of each other on the color wheel.



DEA0B2



A0DECC

Split Complementary

Split-complementary colors differ from the complementary color scheme. The scheme consists of three colors, the original color and two neighbors of the complement color.



6CBDC7



DEA0B2



8EBC99

Square

The Square scheme is like the rectangle color scheme, but the four colors are evenly spaced on the color wheel.



DEA0B2



C2AF82



77BEB0



94B3DF

Rectangle

The Rectangle color scheme consists of four colors that form a rectangle on the color wheel.



DEA0B2



DAA58E



77BEB0



71BBD4

Sweetspot

The Sweet Spot groups the original color and five complimentary colors.



DEA0B2



FFEBF1



CBA0DE



807376



000000



808080

Same Dimension

The Same Dimension uses a secret algorithm to generate beautiful new colors.



DEA0B2



FFA8C1



DEACA0



706568



B00033



30000E

Inverse Universe

The Inverse Universe completely reimagines the original color for something new.



DEA0B2



FFA8C1



A0D2DE



706568



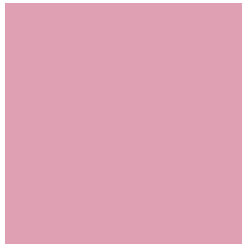
B00033



30000E

Previews

White Background



This preview shows how the Hex color #DEA0B2 looks on a white background.

Color Contrast Check

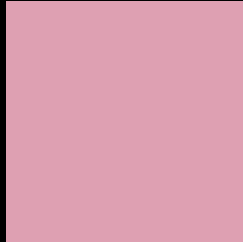
Large Text (above 18pt) WCAG AA × Fail

Any Text WCAG AA × Fail

Large Text (above 18pt) WCAG AAA × Fail

Any Text WCAG AAA × Fail

Black Background



This preview shows how the Hex color #DEA0B2 looks on a black background.

Color Contrast Check

Large Text (above 18pt) WCAG AA ✓ Pass

Any Text WCAG AA ✓ Pass

Large Text (above 18pt) WCAG AAA ✓ Pass

Any Text WCAG AAA ✓ Pass

If you want to check with other color combinations, try the [Color Contrast Checker](#).

Hex DEA0B2 Background



This preview shows how black text looks on a background with the Hex color DEA0B2.

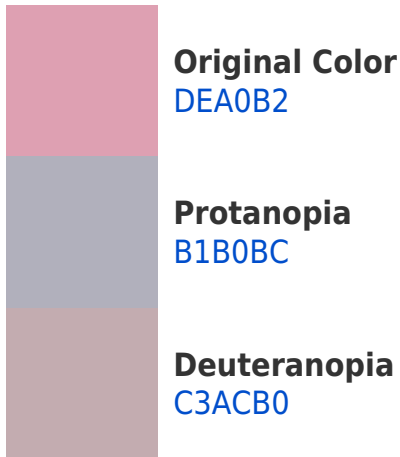


This preview shows how white text looks on a background with the Hex color DEA0B2.

Color Blindness Simulation

Color vision deficiency is a very complex topic, and I could not describe the different causes any better than Wikipedia does, so if you want to learn more, you should check out their [article about color blindness](#).

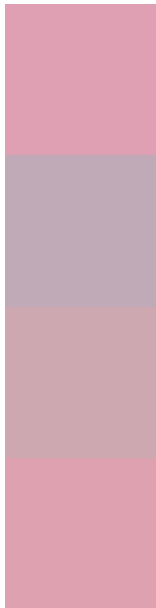
Dichromacy





Tritanopia
DDA1AD

Trichromacy



Original Color
DEA0B2

Protanomaly
C1AAB8

Deuteranomaly
CDA8B1

Tritanomaly
DDA1AF

Monochromacy



Original Color
DEA0B2

Achromatopsia
B5B5B5

Achromatomaly
C4ADB4

CSS Examples

Text

The CSS property to change the color of the text to Hex DEA0B2 is called "color". The color property can be set on classes, ids or directly on the HTML element.

This example shows how text in the color #DEA0B2 looks like.

```
.text, #text, p{  
    color:#DEA0B2  
}
```

If you want to add a text shadow in that color use the text-shadow property, you can generate a text shadow directly with our [CSS Text Shadow Generator](#).

Here you see how black text with a 4 pixel #DEA0B2 colored shadow looks like.

```
.shadow{ text-shadow: 4px 4px 2px #DEA0B2
}
```

Border

The CSS property to change the border of an element to Hex DEA0B2 is called "border". The border property can be set on classes, ids or directly on the HTML element.

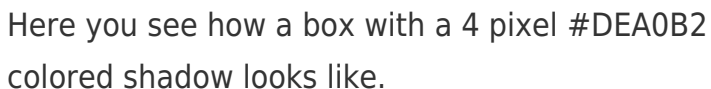
This example shows the color as border, it can be applied via the CSS property "border" or "border-color".

```
.border, #border, table{ border:4px solid
#DEA0B2 }
```

If only the border color should be changed use the property `border-color`.

```
.border{ border-color:#DEA0B2 }
```

If you want to add a box shadow in that color use:



Here you see how a box with a 4 pixel `#DEA0B2` colored shadow looks like.

```
.boxshadow{ -moz-box-shadow:4px 4px 4px  
4px #DEA0B2; -webkit-box-shadow:4px 4px  
4px 4px #DEA0B2; box-shadow:4px 4px 4px  
4px #DEA0B2 }
```

Background

The CSS property to change the background color of an element to Hex DEA0B2 is called "background". The background property can be set on classes, ids or directly on the HTML element.

```
.background, #background, body{  
background:#DEA0B2 }
```

If only the background color should be changed can be used:

```
.background{ background-color:#DEA0B2 }
```

This example shows the color as background, it is applied via the CSS property "background".

To optimize and compress your CSS code, you can use our [online CSS compressor and optimizer](#) based on csstidy. If you want to create a linear or radial gradient as background or border, check our [CSS Gradient Generator](#).

Hey! You found this booklet interesting? Support Converting Colors with the new Membership Option!

The pro membership hides all ads, plus gives you double the colors in the color bucket, and more awesome pro features!

[Learn more, Memberships starting at \\$2.50/m!](#)

**Follow me
on Twitter!**

@ConvertingColor