

Converting Colors

Hex(DEABBD)

Have a look what the booklet for
Hex(DEABBD) contains.

Hex(DEABBD)	3
<i>Conversions</i>	4
<i>Details</i>	6
<i>Harmonies</i>	11
<i>Previews</i>	23
<i>Color Blindness Simulation</i>	26
<i>CSS Examples</i>	29

Color

Hex(DEABBBD)

Conversions

Conversions Part 1

Format	Color
Hex	DEABBD
RGB	222, 171, 189
RGB Percent	87%, 67%, 74%
CMY	0.1294, 0.3294, 0.2588
CMYK	0.00, 0.23, 0.15, 0.13
HSL	339°, 44%, 77%
HSV	339°, 23%, 87%
XYZ	53.8724, 48.3295, 54.6333
YIQ	188.3010, 24.6180, 16.4100

Conversions

Conversions Part 2

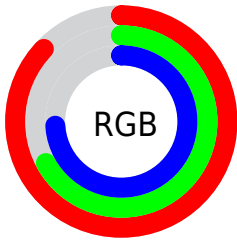
Format	Color
R _Y B	222, 171, 189
Decimal	14592957
CIE Lab	75.03, 21.41, -1.97
CIE LCh	75, 21.500, 354.732
Yxy	48.3295, 0.3435, 0.3082
Android (android.graphics.Color)	4292783037 (0xFFDEABBD)
YUV	188.3010, 0.3446, 29.5540
Hunter-Lab	69.5194, 16.6652, 2.0694

Details

The Hex color **DEABBD** is a light color, and the websafe version is hex **CC9999**. A complement of this color would be **ABDECC**, and the grayscale version is **BCBCBC**.

A 20% lighter version of the original color is **FFE3F5**, and **A67688** is the 20% darker color. If you saturate the color by 10%, you get **DE95AF**, and if you desaturate by 10%, it is **DEC1CB**.

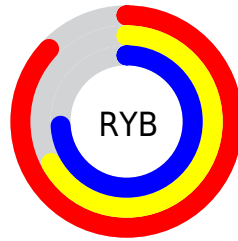
Distribution



Red (87%)

Green (67%)

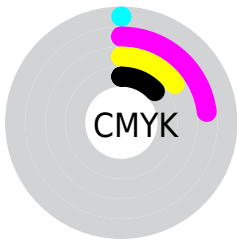
Blue (74%)



Red (87%)

Yellow (67%)

Blue (74%)

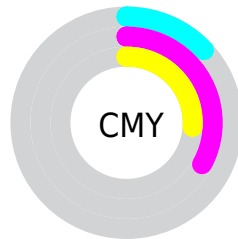


Cyan (0%)

Magenta (23%)

Yellow (15%)

Black (13%)



Cyan (13%)

Magenta (33%)

Yellow (26%)

Brightness & Saturation Gradients

These gradients show how the Hex color DEABBD changes by changing the brightness by 10 percent. The first figure shows a shift by +10% for each color and the second figure -10%.

Similar to the brightness gradients but the following saturation gradients show a change of the Hex color DEABBD by changing the saturation by 10% instead.

 DEABBD

 DEABBD

FFFFFF

 C290A2

 FFE3F5

 A67688

 8B5D6E

 714556

 582E3F

 401829

 290115

 000000

 DEABBD

 DEABBD

 DE95AF

 DEC1CB

 DE7FA0

 DED7DA

 DE6892

 DEEEE8

 DE5284

 DEFFF6

 DE3C75

 DEFFFF

 DE2667

 DE1058

 DE004E

Harmonies

Analogous

The Analogous color harmony consists of three colors that are next to each other on the color wheel.



CFAFD0



DEABBD



E2ACA9

Triad

The Triadic color harmony groups three colors that are evenly spaced from another and form a triangle on the color wheel.



DEABB D



B6BD95



89C1D8

Complementary

The Complementary color scheme is a pair of colors which are on the opposite of each other on the color wheel.



DEABBD



ABDECC

Split Complementary

Split-complementary colors differ from the complementary color scheme. The scheme consists of three colors, the original color and two neighbors of the complement color.



82C4C8



DEABBD



A0C1A1

Square

The Square scheme is like the rectangle color scheme, but the four colors are evenly spaced on the color wheel.



DEABBD



CBB692



8CC4B4



9DBCE0

Rectangle

The Rectangle color scheme consists of four colors that form a rectangle on the color wheel.



DEABBD



DEAE9E



8CC4B4



85C2D4

Sweetspot

The Sweet Spot groups the original color and five complimentary colors.



DEABBD



FFEDF3



CBABDE



807579



000000



808080

Same Dimension

The Same Dimension uses a secret algorithm to generate beautiful new colors.



DEABBD



FFB8D1



DEB2AB



706569



B0003E



300011

Inverse Universe

The Inverse Universe completely reimagines the original color for something new.



DEABBD



FFB8D1



ABD7DE



706569



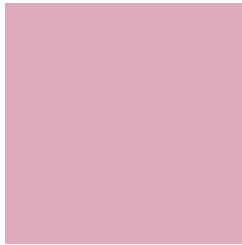
B0003E



300011

Previews

White Background



This preview shows how the Hex color DEABBD looks on a white background.

Color Contrast Check

Large Text (above 18pt) WCAG AA × Fail

Any Text WCAG AA × Fail

Large Text (above 18pt) WCAG AAA × Fail

Any Text WCAG AAA × Fail

Black Background



Color Contrast Check

Large Text (above 18pt) WCAG AA ✓ Pass

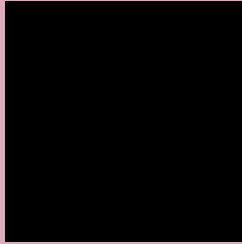
Any Text WCAG AA ✓ Pass

Large Text (above 18pt) WCAG AAA ✓ Pass

Any Text WCAG AAA ✓ Pass

If you want to check with other color combinations, try the [Color Contrast Checker](#).

Hex DEABBD Background



This preview shows how black text looks on a background with the Hex color DEABBD.

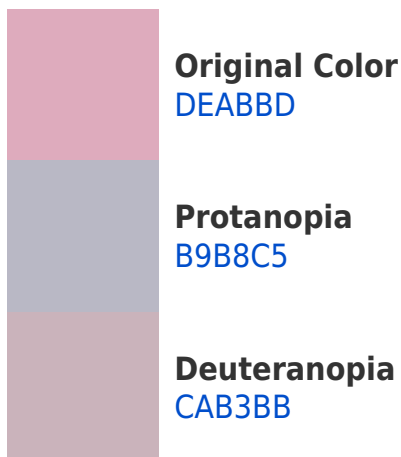


This preview shows how white text looks on a background with the Hex color DEABBD.

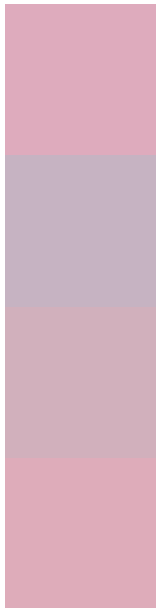
Color Blindness Simulation

Color vision deficiency is a very complex topic, and I could not describe the different causes any better than Wikipedia does, so if you want to learn more, you should check out their [article about color blindness](#).

Dichromacy



Trichromacy



Original Color
DEABBD

Protanomaly
C6B3C2

Deuteranomaly
D1B0BC

Tritanomaly
DEACBA

Monochromacy



Original Color
DEABBD

Achromatopsia
BCBCBC

Achromatomaly
C8B6BC

CSS Examples

Text

The CSS property to change the color of the text to Hex DEABBD is called "color". The color property can be set on classes, ids or directly on the HTML element.

This example shows how text in the color #DEABBD looks like.

```
.text, #text, p{  
    color:#DEABBD  
}
```

If you want to add a text shadow in that color use the text-shadow property, you can generate a text shadow directly with our [CSS Text Shadow Generator](#).

Here you see how black text with a 4 pixel #DEABBD colored shadow looks like.

```
.shadow{ text-shadow: 4px 4px 2px #DEABBD  
}
```

Border

The CSS property to change the border of an element to Hex DEABBD is called "border". The border property can be set on classes, ids or directly on the HTML element.

This example shows the color as border, it can be applied via the CSS property "border" or "border-color".

```
.border, #border, table{ border:4px solid  
#DEABBD }
```

If only the border color should be changed use the property `border-color`.

```
.border{ border-color:#DEABBD }
```

If you want to add a box shadow in that color use:

Here you see how a box with a 4 pixel #DEABBD colored shadow looks like.

```
.boxshadow{ -moz-box-shadow:4px 4px 4px  
4px #DEABBD; -webkit-box-shadow:4px 4px  
4px 4px #DEABBD; box-shadow:4px 4px 4px  
4px #DEABBD }
```

Background

The CSS property to change the background color of an element to Hex DEABBD is called "background". The background property can be set on classes, ids or directly on the HTML element.

```
.background, #background, body{  
background:#DEABBD }
```

If only the background color should be changed can be used:

```
.background{ background-color:#DEABBD }
```

This example shows the color as background, it is applied via the CSS property "background".

To optimize and compress your CSS code, you can use our [online CSS compressor and optimizer](#) based on csstidy. If you want to create a linear or radial gradient as background or border, check our [CSS Gradient Generator](#).

Hey! You found this booklet interesting? Support Converting Colors with the new Membership Option!

The pro membership hides all ads, plus gives you double the colors in the color bucket, and more awesome pro features!

[Learn more, Memberships starting at \\$2.50/m!](#)

**Follow me
on Twitter!**

@ConvertingColor