

# Converting Colors

Hex(DEAC94)

Have a look what the booklet for  
Hex(DEAC94) contains.

<b>Hex(DEAC94)</b> .....	3
<i><b>Conversions</b></i> .....	4
<i><b>Details</b></i> .....	6
<i><b>Harmonies</b></i> .....	11
<i><b>Previews</b></i> .....	23
<i><b>Color Blindness Simulation</b></i> .....	26
<i><b>CSS Examples</b></i> .....	29

# **Color**

**Hex(DEAC94)**

# Conversions

## Conversions Part 1

<b>Format</b>	<b>Color</b>
Hex	DEAC94
RGB	222, 172, 148
RGB Percent	87%, 67%, 58%
CMY	0.1294, 0.3255, 0.4196
CMYK	0.00, 0.23, 0.33, 0.13
HSL	19°, 53%, 73%
HSV	19°, 33%, 87%
XYZ	50.2220, 47.1728, 34.4752
YIQ	184.2140, 37.5040, 3.1360

# Conversions

## Conversions Part 2

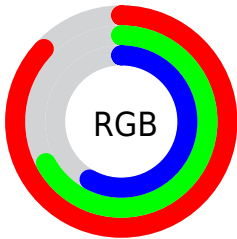
Format	Color
R <sub>Y</sub> B	222, 184, 148
Decimal	14593172
CIE Lab	74.30, 15.00, 19.37
CIE LCh	74, 24.502, 52.254
Yxy	47.1728, 0.3808, 0.3577
Android (android.graphics.Color)	4292783252 (0xFFDEAC94)
YUV	184.2140, -17.8535, 33.1383
Hunter-Lab	68.6824, 10.3287, 18.3170

# Details

The Hex color **DEAC94** is a light color, and the websafe version is hex **CC9999**. A complement of this color would be **94C6DE**, and the grayscale version is **B8B8B8**.

A 20% lighter version of the original color is **FFE3CA**, and **A57861** is the 20% darker color. If you saturate the color by 10%, you get **DE9D7E**, and if you desaturate by 10%, it is **DEBBAA**.

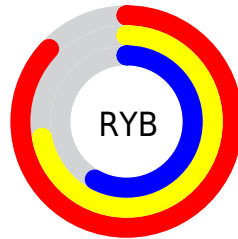
# Distribution



Red (87%)

Green (67%)

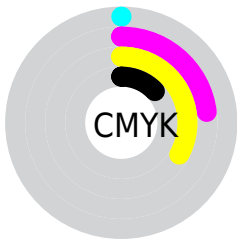
Blue (58%)



Red (87%)

Yellow (72%)

Blue (58%)

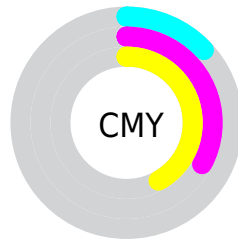


Cyan (0%)

Magenta (23%)

Yellow (33%)

Black (13%)



Cyan (13%)

Magenta (33%)

Yellow (42%)

# Brightness & Saturation Gradients

These gradients show how the Hex color DEAC94 changes by changing the brightness by 10 percent. The first figure shows a shift by +10% for each color and the second figure -10%.

Similar to the brightness gradients but the following saturation gradients show a change of the Hex color DEAC94 by changing the saturation by 10% instead.



 DEAC94

 DEAC94

FFFFFF

 C1917A

 FFE3CA

 A57861

 FFFFFE6

 8A5F49

 704733

 56301D

 3D1B05

 260300

 000000

 DEAC94

 DEAC94

 DE9D7E

 DEBBAA

 DE8E68

 DECAC0

 DE7F51

 DED9D7

 DE703B

 DEE8ED

 DE6125

 DEF7FF

 DE520F

 DEFFFF

 DE4800

# Harmonies

## Analogous

The Analogous color harmony consists of three colors that are next to each other on the color wheel.



E5A7A7



DEAC94



CDB38A

# Triad

The Triadic color harmony groups three colors that are evenly spaced from another and form a triangle on the color wheel.



DEAC94



84C3B0



B3B3E0

# Complementary

The Complementary color scheme is a pair of colors which are on the opposite of each other on the color wheel.



DEAC94



94C6DE

# Split Complementary

Split-complementary colors differ from the complementary color scheme. The scheme consists of three colors, the original color and two neighbors of the complement color.



94BBE3



DEAC94



77C3C7

# Square

The Square scheme is like the rectangle color scheme, but the four colors are evenly spaced on the color wheel.



DEAC94



9CC09B



7CC0DA



CEACD3

# Rectangle

The Rectangle color scheme consists of four colors that form a rectangle on the color wheel.



DEAC94



BEB88B



7CC0DA



A8B6E2



# Sweetspot

The Sweet Spot groups the original color and five complimentary colors.



DEAC94



FFEEE6



DE94C7



807570



000000



808080



# Same Dimension

The Same Dimension uses a secret algorithm to generate beautiful new colors.



DEAC94



FFBA99



DED094



706965



B03900



301000

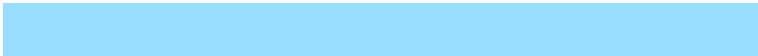


# Inverse Universe

The Inverse Universe completely reimagines the original color for something new.



94C6DE



99DEFF



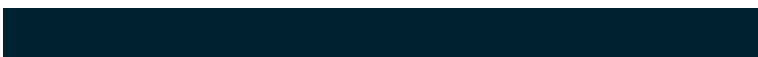
94A2DE



656D70



0077B0



002130



# Previews

## White Background



This preview shows how the Hex color DEAC94 looks on a white background.

## Color Contrast Check

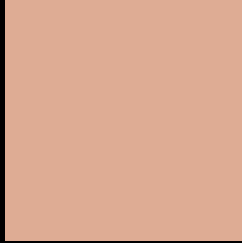
Large Text (above 18pt) WCAG AA × Fail

Any Text WCAG AA × Fail

Large Text (above 18pt) WCAG AAA × Fail

Any Text WCAG AAA × Fail

# Black Background



This preview shows how the Hex color DEAC94 looks on a black background.

## Color Contrast Check

Large Text (above 18pt) WCAG AA ✓ Pass

Any Text WCAG AA ✓ Pass

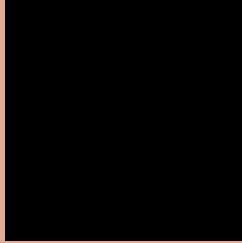
Large Text (above 18pt) WCAG AAA ✓ Pass

Any Text WCAG AAA ✓ Pass

If you want to check with other color combinations, try the [Color Contrast Checker](#).



## Hex DEAC94 Background



This preview shows how black text looks on a background with the Hex color DEAC94.

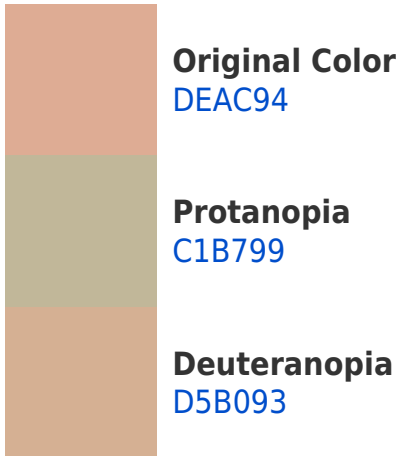


This preview shows how white text looks on a background with the Hex color DEAC94.

# Color Blindness Simulation

Color vision deficiency is a very complex topic, and I could not describe the different causes any better than Wikipedia does, so if you want to learn more, you should check out their [article about color blindness](#).

## Dichromacy





**Tritanopia**  
E1A7B4

# Trichromacy



**Original Color**  
DEAC94

**Protanomaly**  
CCB397

**Deuteranomaly**  
D8AF93

**Tritanomaly**  
E0A9A8

# Monochromacy



**Original Color**  
DEAC94

**Achromatopsia**  
B8B8B8

**Achromatomaly**  
C6B4AB

# CSS Examples

## Text

The CSS property to change the color of the text to Hex DEAC94 is called "color". The color property can be set on classes, ids or directly on the HTML element.

This example shows how text in the color #DEAC94 looks like.

```
.text, #text, p{  
    color:#DEAC94  
}
```

If you want to add a text shadow in that color use the text-shadow property, you can generate a text shadow directly with our [CSS Text Shadow Generator](#).

Here you see how black text with a 4 pixel #DEAC94 colored shadow looks like.

```
.shadow{ text-shadow: 4px 4px 2px #DEAC94  
}
```

## Border

The CSS property to change the border of an element to Hex DEAC94 is called "border". The border property can be set on classes, ids or directly on the HTML element.

This example shows the color as border, it can be applied via the CSS property "border" or "border-color".

```
.border, #border, table{ border:4px solid  
#DEAC94 }
```

If only the border color should be changed use the property `border-color`.

```
.border{ border-color:#DEAC94 }
```

If you want to add a box shadow in that color use:

Here you see how a box with a 4 pixel #DEAC94 colored shadow looks like.

```
.boxshadow{ -moz-box-shadow:4px 4px 4px  
4px #DEAC94; -webkit-box-shadow:4px 4px  
4px 4px #DEAC94; box-shadow:4px 4px 4px  
4px #DEAC94 }
```

# Background

The CSS property to change the background color of an element to Hex DEAC94 is called "background". The background property can be set on classes, ids or directly on the HTML element.

```
.background, #background, body{  
background:#DEAC94 }
```

If only the background color should be changed can be used:

```
.background{ background-color:#DEAC94 }
```

This example shows the color as background, it is applied via the CSS property "background".

To optimize and compress your CSS code, you can use our [online CSS compressor and optimizer](#) based on csstidy. If you want to create a linear or radial gradient as background or border, check our [CSS Gradient Generator](#).



Hey! You found this booklet interesting? Support Converting Colors with the new Membership Option!

The pro membership hides all ads, plus gives you double the colors in the color bucket, and more awesome pro features!

**[Learn more, Memberships starting at \\$2.50/m!](#)**

**Follow me  
on Twitter!**

@ConvertingColor