

Converting Colors

Hex(DEB2AB)

Have a look what the booklet for
Hex(DEB2AB) contains.

Hex(DEB2AB)	3
<i>Conversions</i>	4
<i>Details</i>	6
<i>Harmonies</i>	11
<i>Previews</i>	23
<i>Color Blindness Simulation</i>	26
<i>CSS Examples</i>	29

Color

Hex(DEB2AB)

Conversions

Conversions Part 1

Format	Color
Hex	DEB2AB
RGB	222, 178, 171
RGB Percent	87%, 70%, 67%
CMY	0.1294, 0.3020, 0.3294
CMYK	0.00, 0.20, 0.23, 0.13
HSL	8°, 44%, 77%
HSV	8°, 23%, 87%
XYZ	53.3953, 50.3107, 45.4248
YIQ	190.3580, 28.4710, 7.1510

Conversions

Conversions Part 2

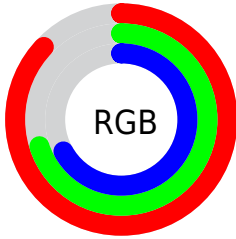
Format	Color
R _Y B	222, 179, 171
Decimal	14594731
CIE Lab	76.26, 14.89, 9.63
CIE LCh	76, 17.733, 32.874
Yxy	50.3107, 0.3580, 0.3374
Android (android.graphics.Color)	4292784811 (0xFFDEB2AB)
YUV	190.3580, -9.5435, 27.7500
Hunter-Lab	70.9300, 10.2452, 11.6807

Details

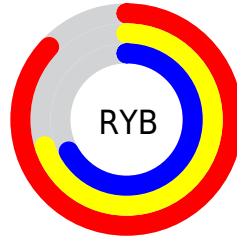
The Hex color **DEB2AB** is a light color, and the websafe version is hex **CC9999**. A complement of this color would be **ABD7DE**, and the grayscale version is **BEBEBE**.

A 20% lighter version of the original color is **FFEAE2**, and **A67D77** is the 20% darker color. If you saturate the color by 10%, you get **DE9F95**, and if you desaturate by 10%, it is **DEC5C1**.

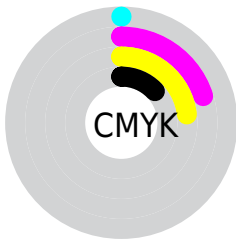
Distribution



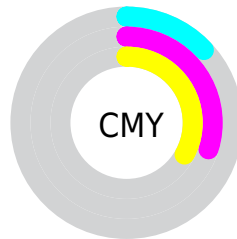
- Red (87%)
- Green (70%)
- Blue (67%)



- Red (87%)
- Yellow (70%)
- Blue (67%)



- Cyan (0%)
- Magenta (20%)
- Yellow (23%)
- Black (13%)



- Cyan (13%)
- Magenta (30%)
- Yellow (33%)

Brightness & Saturation Gradients

These gradients show how the Hex color DEB2AB changes by changing the brightness by 10 percent. The first figure shows a shift by +10% for each color and the second figure -10%.

Similar to the brightness gradients but the following saturation gradients show a change of the Hex color DEB2AB by changing the saturation by 10% instead.

 DEB2AB

 DEB2AB

FFFFFF

 C29790

 FFEAE2

 A67D77

 8B645E

 714C47

 583530

 3F1F1B

 290A00

 000000

 DEB2AB

 DEB2AB

 DE9F95

 DEC5C1

 DE8C7F

 DED8D7

 DE7968

 DEEBEE

 DE6552

 DEFFFF

 DE523C

 DE3F26

 DE2C10

 DE1E00

Harmonies

Analogous

The Analogous color harmony consists of three colors that are next to each other on the color wheel.



DDB1BB



DEB2AB



D6B69F

Triad

The Triadic color harmony groups three colors that are evenly spaced from another and form a triangle on the color wheel.



DEB2AB



A3C4AD



ACBDDC

Complementary

The Complementary color scheme is a pair of colors which are on the opposite of each other on the color wheel.



DEB2AB



ABD7DE

Split Complementary

Split-complementary colors differ from the complementary color scheme. The scheme consists of three colors, the original color and two neighbors of the complement color.



9AC2D9



DEB2AB



95C6BD

Square

The Square scheme is like the rectangle color scheme, but the four colors are evenly spaced on the color wheel.



DEB2AB



B5C0A0



91C5CD



C1B7D8

Rectangle

The Rectangle color scheme consists of four colors that form a rectangle on the color wheel.



DEB2AB



CDBA9C



91C5CD



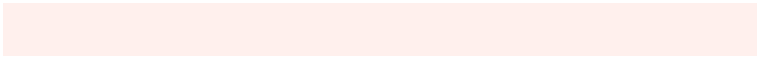
A5BFDC

Sweetspot

The Sweet Spot groups the original color and five complimentary colors.



DEB2AB



FFF0ED



DEABD7



807775



000000



808080

Same Dimension

The Same Dimension uses a secret algorithm to generate beautiful new colors.



DEB2AB



FFC1B8



DECBAB



706765



B01800



300700

Inverse Universe

The Inverse Universe completely reimagines the original color for something new.



ABD7DE



B8F5FF



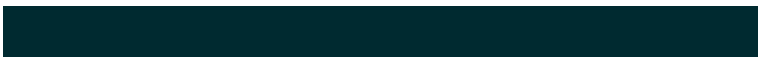
ABBEDE



656F70



0098B0



002A30

Previews

White Background



This preview shows how the Hex color DEB2AB looks on a white background.

Color Contrast Check

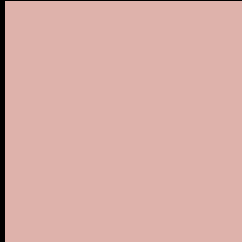
Large Text (above 18pt) WCAG AA × Fail

Any Text WCAG AA × Fail

Large Text (above 18pt) WCAG AAA × Fail

Any Text WCAG AAA × Fail

Black Background



This preview shows how the Hex color DEB2AB looks on a black background.

Color Contrast Check

Large Text (above 18pt) WCAG AA ✓ Pass

Any Text WCAG AA ✓ Pass

Large Text (above 18pt) WCAG AAA ✓ Pass

Any Text WCAG AAA ✓ Pass

If you want to check with other color combinations, try the [Color Contrast Checker](#).

Hex DEB2AB Background



This preview shows how black text looks on a background with the Hex color DEB2AB.

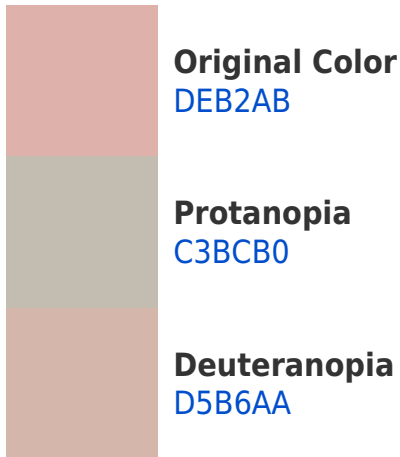


This preview shows how white text looks on a background with the Hex color DEB2AB.

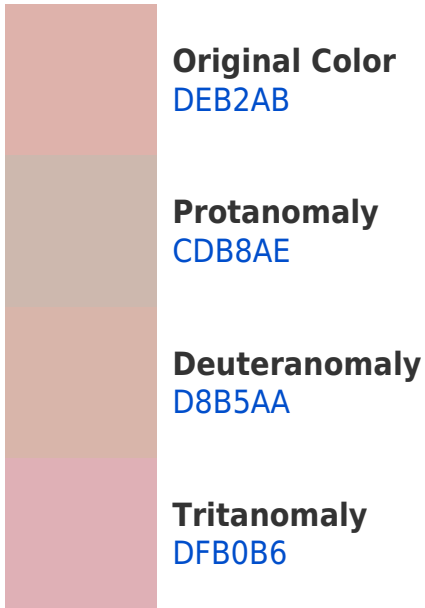
Color Blindness Simulation

Color vision deficiency is a very complex topic, and I could not describe the different causes any better than Wikipedia does, so if you want to learn more, you should check out their [article about color blindness](#).

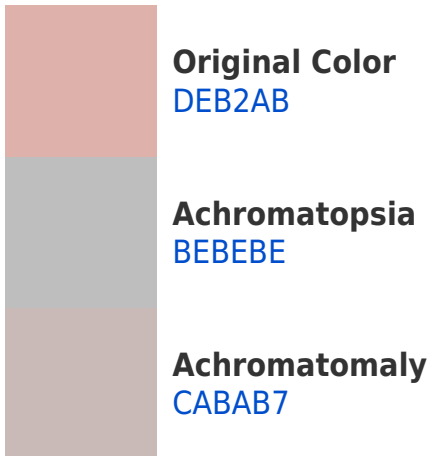
Dichromacy



Trichromacy



Monochromacy



CSS Examples

Text

The CSS property to change the color of the text to Hex DEB2AB is called "color". The color property can be set on classes, ids or directly on the HTML element.

This example shows how text in the color #DEB2AB looks like.

```
.text, #text, p{  
    color:#DEB2AB  
}
```

If you want to add a text shadow in that color use the text-shadow property, you can generate a text shadow directly with our [CSS Text Shadow Generator](#).

Here you see how black text with a 4 pixel #DEB2AB colored shadow looks like.

```
.shadow{ text-shadow: 4px 4px 2px #DEB2AB
}
```

Border

The CSS property to change the border of an element to Hex DEB2AB is called "border". The border property can be set on classes, ids or directly on the HTML element.

This example shows the color as border, it can be applied via the CSS property "border" or "border-color".

```
.border, #border, table{ border:4px solid
#DEB2AB }
```

If only the border color should be changed use the property `border-color`.

```
.border{ border-color:#DEB2AB }
```

If you want to add a box shadow in that color use:

Here you see how a box with a 4 pixel #DEB2AB colored shadow looks like.

```
.boxshadow{ -moz-box-shadow:4px 4px 4px  
4px #DEB2AB; -webkit-box-shadow:4px 4px  
4px 4px #DEB2AB; box-shadow:4px 4px 4px  
4px #DEB2AB }
```

Background

The CSS property to change the background color of an element to Hex DEB2AB is called "background". The background property can be set on classes, ids or directly on the HTML element.

```
.background, #background, body{  
background:#DEB2AB }
```

If only the background color should be changed can be used:

```
.background{ background-color:#DEB2AB }
```

This example shows the color as background, it is applied via the CSS property "background".

To optimize and compress your CSS code, you can use our [online CSS compressor and optimizer](#) based on csstidy. If you want to create a linear or radial gradient as background or border, check our [CSS Gradient Generator](#).

Hey! You found this booklet interesting? Support Converting Colors with the new Membership Option!

The pro membership hides all ads, plus gives you double the colors in the color bucket, and more awesome pro features!

[Learn more, Memberships starting at \\$2.50/m!](#)

**Follow me
on Twitter!**

@ConvertingColor