

Converting Colors

Hex(DEB798)

Have a look what the booklet for
Hex(DEB798) contains.

Hex(DEB798)	3
<i>Conversions</i>	4
<i>Details</i>	6
<i>Harmonies</i>	11
<i>Previews</i>	23
<i>Color Blindness Simulation</i>	26
<i>CSS Examples</i>	29

Color

Hex(DEB798)

Conversions

Conversions Part 1

Format	Color
Hex	DEB798
RGB	222, 183, 152
RGB Percent	87%, 72%, 60%
CMY	0.1294, 0.2824, 0.4039
CMYK	0.00, 0.18, 0.32, 0.13
HSL	27°, 51%, 73%
HSV	27°, 32%, 87%
XYZ	52.7252, 51.6636, 36.8989
YIQ	191.1270, 33.1950, -1.3730

Conversions

Conversions Part 2

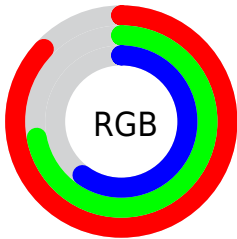
Format	Color
R _Y B	222, 208, 152
Decimal	14595992
CIE Lab	77.08, 9.63, 21.04
CIE LCh	77, 23.141, 65.416
Yxy	51.6636, 0.3732, 0.3657
Android (android.graphics.Color)	4292786072 (0xFFDEB798)
YUV	191.1270, -19.2896, 27.0756
Hunter-Lab	71.8774, 5.1521, 19.8771

Details

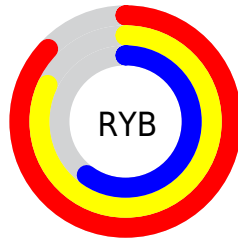
The Hex color **DEB798** is a light color, and the websafe version is hex **FFCC99**. A complement of this color would be **98BFDE**, and the grayscale version is **BFBFBF**.

A 20% lighter version of the original color is **FFEFCE**, and **A68265** is the 20% darker color. If you saturate the color by 10%, you get **DEAB82**, and if you desaturate by 10%, it is **DEC3AE**.

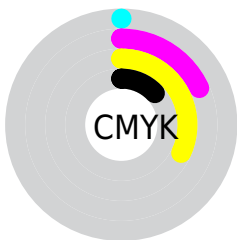
Distribution



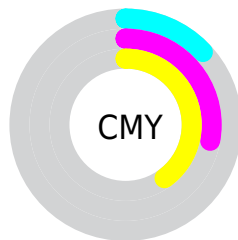
- Red (87%)
- Green (72%)
- Blue (60%)



- Red (87%)
- Yellow (82%)
- Blue (60%)



- Cyan (0%)
- Magenta (18%)
- Yellow (32%)
- Black (13%)



- Cyan (13%)
- Magenta (28%)
- Yellow (40%)

Brightness & Saturation Gradients

These gradients show how the Hex color DEB798 changes by changing the brightness by 10 percent. The first figure shows a shift by +10% for each color and the second figure -10%.

Similar to the brightness gradients but the following saturation gradients show a change of the Hex color DEB798 by changing the saturation by 10% instead.

 DEB798

 DEB798

FFFFFF

 C29C7E

 FFEFCE

 A68265

 FFFFEB

 8B694D

 705136

 573A20

 3E240A

 271000

 000000

 DEB798

 DEB798

 DEAB82

 DEC3AE

 DE9E6C

 DED0C4

 DE9255

 DEDCDB

 DE863F

 DEE8F1

 DE7929

 DEF5FF

 DE6D13

 DEFFFF

 DE6200

Harmonies

Analogous

The Analogous color harmony consists of three colors that are next to each other on the color wheel.



E9B1A6



DEB798



CBBE94

Triad

The Triadic color harmony groups three colors that are evenly spaced from another and form a triangle on the color wheel.



DEB798



88CBC2



C7B8E1

Complementary

The Complementary color scheme is a pair of colors which are on the opposite of each other on the color wheel.



DEB798



98BFDE

Split Complementary

Split-complementary colors differ from the complementary color scheme. The scheme consists of three colors, the original color and two neighbors of the complement color.



AABFE9



DEB798



83C9D6

Square

The Square scheme is like the rectangle color scheme, but the four colors are evenly spaced on the color wheel.



DEB798



9BC9AC



90C5E5



DEB1D1

Rectangle

The Rectangle color scheme consists of four colors that form a rectangle on the color wheel.



DEB798



BBC397



90C5E5



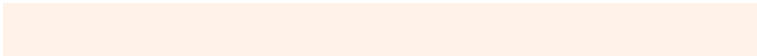
BEBAE5

Sweetspot

The Sweet Spot groups the original color and five complimentary colors.



DEB798



FFF2E8



DE98C0



807871



000000



808080

Same Dimension

The Same Dimension uses a secret algorithm to generate beautiful new colors.



DEB798



FFC99E



DED998



706A65



B04E00



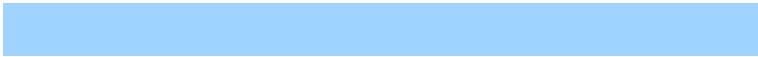
301500

Inverse Universe

The Inverse Universe completely reimagines the original color for something new.



98BFDE



9ED4FF



989DDE



656B70



0062B0



001B30

Previews

White Background



This preview shows how the Hex color DEB798 looks on a white background.

Color Contrast Check

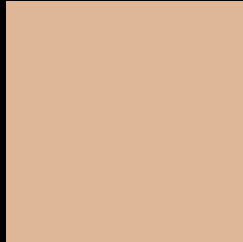
Large Text (above 18pt) WCAG AA × Fail

Any Text WCAG AA × Fail

Large Text (above 18pt) WCAG AAA × Fail

Any Text WCAG AAA × Fail

Black Background



This preview shows how the Hex color DEB798 looks on a black background.

Color Contrast Check

Large Text (above 18pt) WCAG AA ✓ Pass

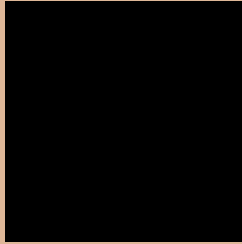
Any Text WCAG AA ✓ Pass

Large Text (above 18pt) WCAG AAA ✓ Pass

Any Text WCAG AAA ✓ Pass

If you want to check with other color combinations, try the [Color Contrast Checker](#).

Hex DEB798 Background



This preview shows how black text looks on a background with the Hex color DEB798.



This preview shows how white text looks on a background with the Hex color DEB798.

Color Blindness Simulation

Color vision deficiency is a very complex topic, and I could not describe the different causes any better than Wikipedia does, so if you want to learn more, you should check out their [article about color blindness](#).

Dichromacy



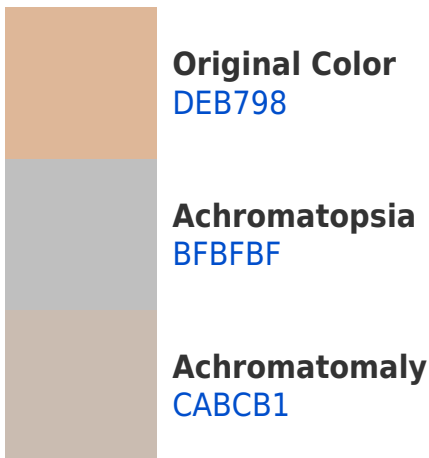


Tritanopia
E2B2BF

Trichromacy



Monochromacy



CSS Examples

Text

The CSS property to change the color of the text to Hex DEB798 is called "color". The color property can be set on classes, ids or directly on the HTML element.

This example shows how text in the color #DEB798 looks like.

```
.text, #text, p{  
    color:#DEB798  
}
```

If you want to add a text shadow in that color use the text-shadow property, you can generate a text shadow directly with our [CSS Text Shadow Generator](#).

Here you see how black text with a 4 pixel #DEB798 colored shadow looks like.

```
.shadow{ text-shadow: 4px 4px 2px #DEB798  
}
```

Border

The CSS property to change the border of an element to Hex DEB798 is called "border". The border property can be set on classes, ids or directly on the HTML element.

This example shows the color as border, it can be applied via the CSS property "border" or "border-color".

```
.border, #border, table{ border:4px solid  
#DEB798 }
```

If only the border color should be changed use the property `border-color`.

```
.border{ border-color:#DEB798 }
```

If you want to add a box shadow in that color use:

Here you see how a box with a 4 pixel #DEB798 colored shadow looks like.

```
.boxshadow{ -moz-box-shadow:4px 4px 4px  
4px #DEB798; -webkit-box-shadow:4px 4px  
4px 4px #DEB798; box-shadow:4px 4px 4px  
4px #DEB798 }
```

Background

The CSS property to change the background color of an element to Hex DEB798 is called "background". The background property can be set on classes, ids or directly on the HTML element.

```
.background, #background, body{  
background:#DEB798 }
```

If only the background color should be changed can be used:

```
.background{ background-color:#DEB798 }
```

This example shows the color as background, it is applied via the CSS property "background".

To optimize and compress your CSS code, you can use our [online CSS compressor and optimizer](#) based on csstidy. If you want to create a linear or radial gradient as background or border, check our [CSS Gradient Generator](#).

Hey! You found this booklet interesting? Support Converting Colors with the new Membership Option!

The pro membership hides all ads, plus gives you double the colors in the color bucket, and more awesome pro features!

[Learn more, Memberships starting at \\$2.50/m!](#)

**Follow me
on Twitter!**

@ConvertingColor