

Converting Colors

Hex(DEB887)

Have a look what the booklet for
Hex(DEB887) contains.

Hex(DEB887)	3
<i>Conversions</i>	4
<i>Details</i>	6
<i>Harmonies</i>	11
<i>Previews</i>	23
<i>Color Blindness Simulation</i>	26
<i>CSS Examples</i>	29

Color

Hex(DEB887)

Conversions

Conversions Part 1

Format	Color
Hex	DEB887
RGB	222, 184, 135
RGB Percent	87%, 72%, 53%
CMY	0.1294, 0.2784, 0.4706
CMYK	0.00, 0.17, 0.39, 0.13
HSL	34°, 57%, 70%
HSV	34°, 39%, 87%
XYZ	51.6379, 51.5598, 30.1521
YIQ	189.7760, 38.3770, -7.1830

Conversions

Conversions Part 2

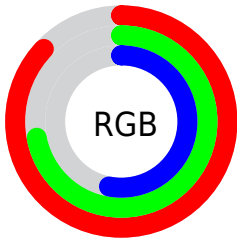
Format	Color
R_{YB}	202, 222, 135
Decimal	14596231
CIE _{Lab}	77.02, 7.05, 30.01
CIE _{LCh}	77, 30.830, 76.776
Yxy	51.5598, 0.3872, 0.3867
Android (android.graphics.Color)	4292786311 (0xFFDEB887)
YUV	189.7760, -27.0046, 28.2604
Hunter-Lab	71.8052, 2.7071, 25.3668

Details

The Hex color **DEB887** is a light color, and the websafe version is hex **FFCC99**, and the color name is **burlywood**. A complement of this color would be **87ADDE**, and the grayscale version is **BEBEBE**.

A 20% lighter version of the original color is **FFF0BD**, and **A58355** is the 20% darker color. If you saturate the color by 10%, you get **DEAE71**, and if you desaturate by 10%, it is **DEC29D**.

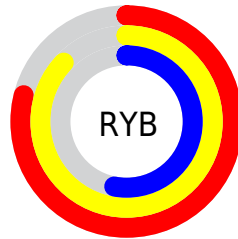
Distribution



Red (87%)

Green (72%)

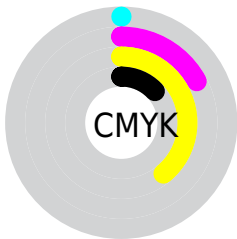
Blue (53%)



Red (79%)

Yellow (87%)

Blue (53%)

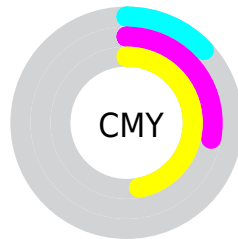


Cyan (0%)

Magenta (17%)

Yellow (39%)

Black (13%)



Cyan (13%)

Magenta (28%)

Yellow (47%)

Brightness & Saturation Gradients

These gradients show how the Hex color DEB887 changes by changing the brightness by 10 percent. The first figure shows a shift by +10% for each color and the second figure -10%.

Similar to the brightness gradients but the following saturation gradients show a change of the Hex color DEB887 by changing the saturation by 10% instead.

 DEB887

 DEB887

FFFFFF

 C19D6D

 FFF0BD

 A58355

 FFFFFD9

 8A6A3D

 FFFFF5

 6F5226

 553B10

 3D2500

 241100

 000000

 DEB887

 DEB887

 DEAE71

 DEC29D

 DEA55B

 DECBB3

 DE9B44

 DED5CA

 DE912E

 DEDFE0

 DE8818

 DEE8F6

 DE7E02

 DEF2FF

 DE7D00

 DEFCFF

 DEFFFF

Harmonies

Analogous

The Analogous color harmony consists of three colors that are next to each other on the color wheel.



F1AF96



DEB887



C2C187

Triad

The Triadic color harmony groups three colors that are evenly spaced from another and form a triangle on the color wheel.



DEB887



69CECE



D6B1E5

Complementary

The Complementary color scheme is a pair of colors which are on the opposite of each other on the color wheel.



DEB887



87ADDE

Split Complementary

Split-complementary colors differ from the complementary color scheme. The scheme consists of three colors, the original color and two neighbors of the complement color.



B1BBF5



DEB887



6ACBE7

Square

The Square scheme is like the rectangle color scheme, but the four colors are evenly spaced on the color wheel.



DEB887



81CDB0



88C5F5



EFAACC

Rectangle

The Rectangle color scheme consists of four colors that form a rectangle on the color wheel.



DEB887



ADC790



88C5F5



CBB5EC

Sweetspot

The Sweet Spot groups the original color and five complimentary colors.



DEB887



FFF2E0



DE87AE



80786E



000000



808080

Same Dimension

The Same Dimension uses a secret algorithm to generate beautiful new colors.



DEB887



FFCB87



DADE87



706B65



B06300



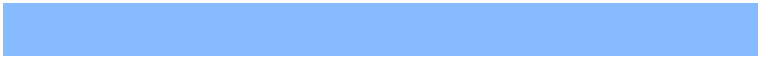
301B00

Inverse Universe

The Inverse Universe completely reimagines the original color for something new.



87ADDE



87BBFF



8B87DE



656A70



004DB0



001530

Previews

White Background



This preview shows how the Hex color DEB887 looks on a white background.

Color Contrast Check

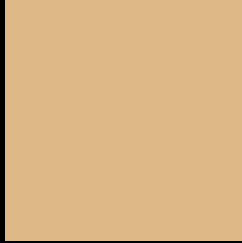
Large Text (above 18pt) WCAG AA × Fail

Any Text WCAG AA × Fail

Large Text (above 18pt) WCAG AAA × Fail

Any Text WCAG AAA × Fail

Black Background



This preview shows how the Hex color DEB887 looks on a black background.

Color Contrast Check

Large Text (above 18pt) WCAG AA ✓ Pass

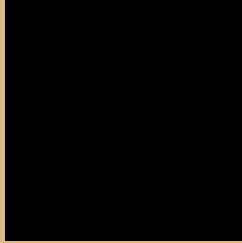
Any Text WCAG AA ✓ Pass

Large Text (above 18pt) WCAG AAA ✓ Pass

Any Text WCAG AAA ✓ Pass

If you want to check with other color combinations, try the [Color Contrast Checker](#).

Hex DEB887 Background



This preview shows how black text looks on a background with the Hex color DEB887.



This preview shows how white text looks on a background with the Hex color DEB887.

Color Blindness Simulation

Color vision deficiency is a very complex topic, and I could not describe the different causes any better than Wikipedia does, so if you want to learn more, you should check out their [article about color blindness](#).

Dichromacy





Tritanopia
E4B1BE

Trichromacy



Monochromacy



CSS Examples

Text

The CSS property to change the color of the text to Hex DEB887 is called "color". The color property can be set on classes, ids or directly on the HTML element.

This example shows how text in the color #DEB887 looks like.

```
.text, #text, p{  
    color:#DEB887  
}
```

If you want to add a text shadow in that color use the text-shadow property, you can generate a text shadow directly with our [CSS Text Shadow Generator](#).

Here you see how black text with a 4 pixel #DEB887 colored shadow looks like.

```
.shadow{ text-shadow: 4px 4px 2px #DEB887
}
```

Border

The CSS property to change the border of an element to Hex DEB887 is called "border". The border property can be set on classes, ids or directly on the HTML element.

This example shows the color as border, it can be applied via the CSS property "border" or "border-color".

```
.border, #border, table{ border:4px solid
#DEB887 }
```

If only the border color should be changed use the property `border-color`.

```
.border{ border-color:#DEB887 }
```

If you want to add a box shadow in that color use:

Here you see how a box with a 4 pixel #DEB887 colored shadow looks like.

```
.boxshadow{ -moz-box-shadow:4px 4px 4px  
4px #DEB887; -webkit-box-shadow:4px 4px  
4px 4px #DEB887; box-shadow:4px 4px 4px  
4px #DEB887 }
```

Background

The CSS property to change the background color of an element to Hex DEB887 is called "background". The background property can be set on classes, ids or directly on the HTML element.

```
.background, #background, body{  
background:#DEB887 }
```

If only the background color should be changed can be used:

```
.background{ background-color:#DEB887 }
```

This example shows the color as background, it is applied via the CSS property "background".

To optimize and compress your CSS code, you can use our [online CSS compressor and optimizer](#) based on csstidy. If you want to create a linear or radial gradient as background or border, check our [CSS Gradient Generator](#).

Hey! You found this booklet interesting? Support Converting Colors with the new Membership Option!

The pro membership hides all ads, plus gives you double the colors in the color bucket, and more awesome pro features!

[Learn more, Memberships starting at \\$2.50/m!](#)

**Follow me
on Twitter!**

@ConvertingColor