

# Converting Colors

Hex(DEB8A9)

Have a look what the booklet for  
Hex(DEB8A9) contains.

<b>Hex(DEB8A9)</b> .....	3
<i><b>Conversions</b></i> .....	4
<i><b>Details</b></i> .....	6
<i><b>Harmonies</b></i> .....	11
<i><b>Previews</b></i> .....	23
<i><b>Color Blindness Simulation</b></i> .....	26
<i><b>CSS Examples</b></i> .....	29

# **Color**

**Hex(DEB8A9)**

# Conversions

## Conversions Part 1

Format	Color
Hex	DEB8A9
RGB	222, 184, 169
RGB Percent	87%, 72%, 66%
CMY	0.1294, 0.2784, 0.3373
CMYK	0.00, 0.17, 0.24, 0.13
HSL	17°, 45%, 77%
HSV	17°, 24%, 87%
XYZ	54.4261, 52.6751, 44.8349
YIQ	193.6520, 27.4630, 3.3910

# Conversions

## Conversions Part 2

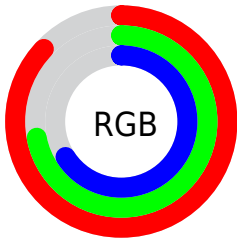
Format	Color
R <sub>Y</sub> B	222, 190, 169
Decimal	14596265
CIE Lab	77.68, 11.40, 12.73
CIE LCh	78, 17.086, 48.161
Yxy	52.6751, 0.3582, 0.3467
Android (android.graphics.Color)	4292786345 (0xFFDEB8A9)
YUV	193.6520, -12.1534, 24.8612
Hunter-Lab	72.5776, 6.8466, 14.1779

# Details

The Hex color **DEB8A9** is a light color, and the websafe version is hex **FFCCCC**. A complement of this color would be **A9CFDE**, and the grayscale version is **C2C2C2**.

A 20% lighter version of the original color is **FFF0E0**, and **A68375** is the 20% darker color. If you saturate the color by 10%, you get **DEA893**, and if you desaturate by 10%, it is **DEC8BF**.

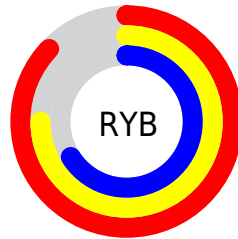
# Distribution



Red (87%)

Green (72%)

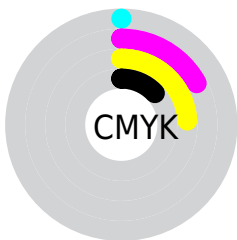
Blue (66%)



Red (87%)

Yellow (75%)

Blue (66%)

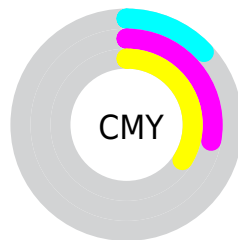


Cyan (0%)

Magenta (17%)

Yellow (24%)

Black (13%)



Cyan (13%)

Magenta (28%)

Yellow (34%)

# Brightness & Saturation Gradients

These gradients show how the Hex color DEB8A9 changes by changing the brightness by 10 percent. The first figure shows a shift by +10% for each color and the second figure -10%.

Similar to the brightness gradients but the following saturation gradients show a change of the Hex color DEB8A9 by changing the saturation by 10% instead.



 DEB8A9

 DEB8A9

FFFFFF


 C29D8F

 FFF0E0

 A68375

FFFFFFD

 8B6A5C

 715245

 583A2E

 40251A

 2A1000

 040000

 000000

 DEB8A9

 DEB8A9

 DEA893

 DEC8BF

 DE987D

 DED8D5

 DE8866

 DEE8EC

 DE7850

 DEF8FF

 DE683A

 DEFFFF

 DE5824

 DE490E

 DE3F00

# Harmonies

## Analogous

The Analogous color harmony consists of three colors that are next to each other on the color wheel.



E2B5B7



DEB8A9



D3BDA1

# Triad

The Triadic color harmony groups three colors that are evenly spaced from another and form a triangle on the color wheel.



DEB8A9



A0C9B9



BBBEDE

# Complementary

The Complementary color scheme is a pair of colors which are on the opposite of each other on the color wheel.



DEB8A9



A9CFDE

# Split Complementary

Split-complementary colors differ from the complementary color scheme. The scheme consists of three colors, the original color and two neighbors of the complement color.



A7C3DF



DEB8A9



97C9C9

# Square

The Square scheme is like the rectangle color scheme, but the four colors are evenly spaced on the color wheel.



DEB8A9



B0C6AB



99C7D7



CEB9D5

# Rectangle

The Rectangle color scheme consists of four colors that form a rectangle on the color wheel.



DEB8A9



C8C0A1



99C7D7



B4C0DF



# Sweetspot

The Sweet Spot groups the original color and five complimentary colors.



DEB8A9



FFF2ED



DEA9D0



807875



000000



808080



# Same Dimension

The Same Dimension uses a secret algorithm to generate beautiful new colors.



DEB8A9



FFCAB5



DED2A9



706865



B03200



300E00

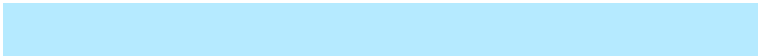


# Inverse Universe

The Inverse Universe completely reimagines the original color for something new.



A9CFDE



B5EAFF



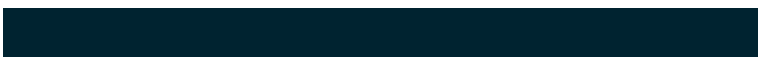
A9B5DE



656D70



007EB0



002330



# Previews

## White Background



This preview shows how the Hex color DEB8A9 looks on a white background.

## Color Contrast Check

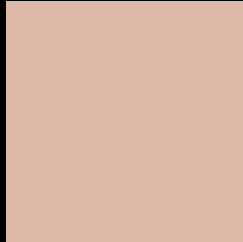
Large Text (above 18pt) WCAG AA × Fail

Any Text WCAG AA × Fail

Large Text (above 18pt) WCAG AAA × Fail

Any Text WCAG AAA × Fail

# Black Background



This preview shows how the Hex color DEB8A9 looks on a black background.

## Color Contrast Check

Large Text (above 18pt) WCAG AA ✓ Pass

Any Text WCAG AA ✓ Pass

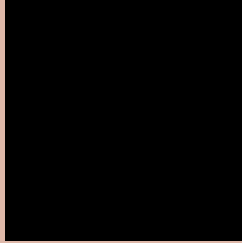
Large Text (above 18pt) WCAG AAA ✓ Pass

Any Text WCAG AAA ✓ Pass

If you want to check with other color combinations, try the [Color Contrast Checker](#).



## Hex DEB8A9 Background



This preview shows how black text looks on a background with the Hex color DEB8A9.

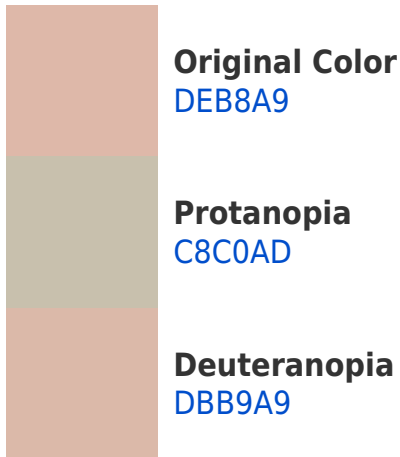


This preview shows how white text looks on a background with the Hex color DEB8A9.

# Color Blindness Simulation

Color vision deficiency is a very complex topic, and I could not describe the different causes any better than Wikipedia does, so if you want to learn more, you should check out their [article about color blindness](#).

## Dichromacy





**Tritanopia**  
E1B4C2

# Trichromacy



**Original Color**  
DEB8A9

**Protanomaly**  
D0BDAC

**Deuteranomaly**  
DCB9A9

**Tritanomaly**  
E0B5B9

# Monochromacy



**Original Color**  
DEB8A9

**Achromatopsia**  
C2C2C2

**Achromatomaly**  
CCBEB9

# CSS Examples

## Text

The CSS property to change the color of the text to Hex DEB8A9 is called "color". The color property can be set on classes, ids or directly on the HTML element.

This example shows how text in the color #DEB8A9 looks like.

```
.text, #text, p{  
    color:#DEB8A9  
}
```

If you want to add a text shadow in that color use the text-shadow property, you can generate a text shadow directly with our [CSS Text Shadow Generator](#).

Here you see how black text with a 4 pixel #DEB8A9 colored shadow looks like.

```
.shadow{ text-shadow: 4px 4px 2px #DEB8A9
}
```

## Border

The CSS property to change the border of an element to Hex DEB8A9 is called "border". The border property can be set on classes, ids or directly on the HTML element.

This example shows the color as border, it can be applied via the CSS property "border" or "border-color".

```
.border, #border, table{ border:4px solid
#DEB8A9 }
```

If only the border color should be changed use the property `border-color`.

```
.border{ border-color:#DEB8A9 }
```

If you want to add a box shadow in that color use:

Here you see how a box with a 4 pixel #DEB8A9 colored shadow looks like.

```
.boxshadow{ -moz-box-shadow:4px 4px 4px  
4px #DEB8A9; -webkit-box-shadow:4px 4px  
4px 4px #DEB8A9; box-shadow:4px 4px 4px  
4px #DEB8A9 }
```

# Background

The CSS property to change the background color of an element to Hex DEB8A9 is called "background". The background property can be set on classes, ids or directly on the HTML element.

```
.background, #background, body{  
background:#DEB8A9 }
```

If only the background color should be changed can be used:

```
.background{ background-color:#DEB8A9 }
```

This example shows the color as background, it is applied via the CSS property "background".

To optimize and compress your CSS code, you can use our [online CSS compressor and optimizer](#) based on csstidy. If you want to create a linear or radial gradient as background or border, check our [CSS Gradient Generator](#).



Hey! You found this booklet interesting? Support Converting Colors with the new Membership Option!

The pro membership hides all ads, plus gives you double the colors in the color bucket, and more awesome pro features!

**[Learn more, Memberships starting at \\$2.50/m!](#)**

**Follow me  
on Twitter!**

@ConvertingColor