

Converting Colors

Hex(DEB9BF)

Have a look what the booklet for
Hex(DEB9BF) contains.

Hex(DEB9BF)	3
<i>Conversions</i>	4
<i>Details</i>	6
<i>Harmonies</i>	11
<i>Previews</i>	23
<i>Color Blindness Simulation</i>	26
<i>CSS Examples</i>	29

Color

Hex(DEB9BF)

Conversions

Conversions Part 1

Format	Color
Hex	DEB9BF
RGB	222, 185, 191
RGB Percent	87%, 73%, 75%
CMY	0.1294, 0.2745, 0.2510
CMYK	0.00, 0.17, 0.14, 0.13
HSL	350°, 36%, 80%
HSV	350°, 17%, 87%
XYZ	56.8771, 53.9891, 56.7134
YIQ	196.7470, 20.1260, 9.7100

Conversions

Conversions Part 2

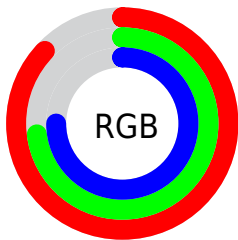
Format	Color
R _Y B	222, 185, 191
Decimal	14596543
CIE Lab	78.46, 14.21, 1.94
CIE LCh	78, 14.340, 7.759
Yxy	53.9891, 0.3394, 0.3222
Android (android.graphics.Color)	4292786623 (0xFFDEB9BF)
YUV	196.7470, -2.8333, 22.1469
Hunter-Lab	73.4773, 9.5877, 5.6711

Details

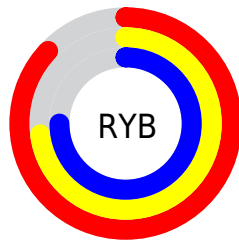
The Hex color **DEB9BF** is a light color, and the websafe version is hex **FFCCCC**. A complement of this color would be **B9DED8**, and the grayscale version is **C5C5C5**.

A 20% lighter version of the original color is **FFF1F7**, and **A6848A** is the 20% darker color. If you saturate the color by 10%, you get **DEA3AC**, and if you desaturate by 10%, it is **DECFD2**.

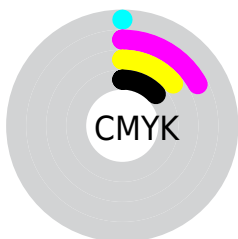
Distribution



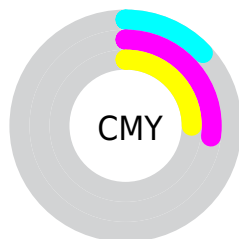
- Red (87%)
- Green (73%)
- Blue (75%)



- Red (87%)
- Yellow (73%)
- Blue (75%)



- Cyan (0%)
- Magenta (17%)
- Yellow (14%)
- Black (13%)



- Cyan (13%)
- Magenta (27%)
- Yellow (25%)

Brightness & Saturation Gradients

These gradients show how the Hex color DEB9BF changes by changing the brightness by 10 percent. The first figure shows a shift by +10% for each color and the second figure -10%.

Similar to the brightness gradients but the following saturation gradients show a change of the Hex color DEB9BF by changing the saturation by 10% instead.

 DEB9BF

 DEB9BF

FFFFFF

 C29EA4

 FFF1F7

 A6848A

 8C6B70

 725258

 593B41

 41252B

 2A1016

 120000

 000000

 DEB9BF

 DEB9BF

 DEA3AC

 DECFD2

 DE8D9A

 DEE5E4

 DE7687

 DEFCE7

 DE6075

 DEFFFF

 DE4A62

 DE344F

 DE1E3D

 DE072A

 DE0024

Harmonies

Analogous

The Analogous color harmony consists of three colors that are next to each other on the color wheel.



D7BACC



DEB9BF



DEBAB2

Triad

The Triadic color harmony groups three colors that are evenly spaced from another and form a triangle on the color wheel.



DEB9BF



BAC6AD



A9C6DA

Complementary

The Complementary color scheme is a pair of colors which are on the opposite of each other on the color wheel.



DEB9BF



B9DED8

Split Complementary

Split-complementary colors differ from the complementary color scheme. The scheme consists of three colors, the original color and two neighbors of the complement color.



A1C9D2



DEB9BF



ACC9B8

Square

The Square scheme is like the rectangle color scheme, but the four colors are evenly spaced on the color wheel.



DEB9BF



C9C2A8



A2CAC5



B8C2DC

Rectangle

The Rectangle color scheme consists of four colors that form a rectangle on the color wheel.



DEB9BF



D9BDAC



A2CAC5



A5C7D8

Sweetspot

The Sweet Spot groups the original color and five complimentary colors.



DEB9BF



FFF2F4



D8B9DE



807879



000000



808080

Same Dimension

The Same Dimension uses a secret algorithm to generate beautiful new colors.



DEB9BF



FFCCD4



DEC5B9



706567



B0001D



300008

Inverse Universe

The Inverse Universe completely reimagines the original color for something new.



DEB9BF



FFCCD4



B9D2DE



706567



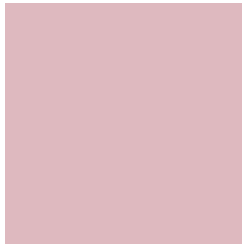
B0001D



300008

Previews

White Background



This preview shows how the Hex color DEB9BF looks on a white background.

Color Contrast Check

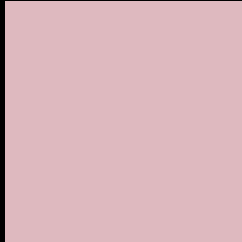
Large Text (above 18pt) WCAG AA × Fail

Any Text WCAG AA × Fail

Large Text (above 18pt) WCAG AAA × Fail

Any Text WCAG AAA × Fail

Black Background



This preview shows how the Hex color DEB9BF looks on a black background.

Color Contrast Check

Large Text (above 18pt) WCAG AA ✓ Pass

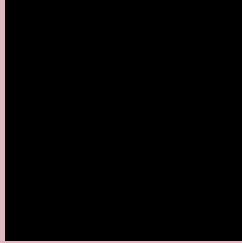
Any Text WCAG AA ✓ Pass

Large Text (above 18pt) WCAG AAA ✓ Pass

Any Text WCAG AAA ✓ Pass

If you want to check with other color combinations, try the [Color Contrast Checker](#).

Hex DEB9BF Background



This preview shows how black text looks on a background with the Hex color DEB9BF.

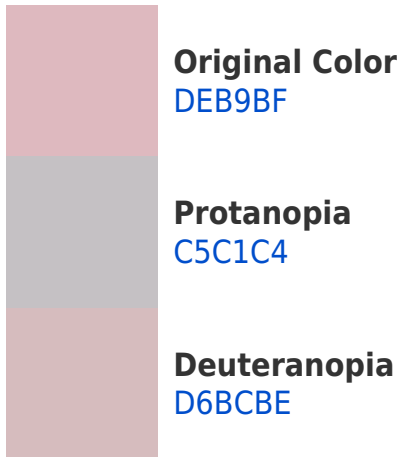


This preview shows how white text looks on a background with the Hex color DEB9BF.

Color Blindness Simulation

Color vision deficiency is a very complex topic, and I could not describe the different causes any better than Wikipedia does, so if you want to learn more, you should check out their [article about color blindness](#).

Dichromacy





Tritanopia
DFB8C6

Trichromacy



Original Color
DEB9BF

Protanomaly
CEBEC2

Deuteranomaly
D9BBBE

Tritanomaly
DFB8C3

Monochromacy



Original Color
DEB9BF

Achromatopsia
C5C5C5

Achromatomaly
CEC1C3

CSS Examples

Text

The CSS property to change the color of the text to Hex DEB9BF is called "color". The color property can be set on classes, ids or directly on the HTML element.

This example shows how text in the color #DEB9BF looks like.

```
.text, #text, p{  
    color:#DEB9BF  
}
```

If you want to add a text shadow in that color use the text-shadow property, you can generate a text shadow directly with our [CSS Text Shadow Generator](#).

Here you see how black text with a 4 pixel #DEB9BF colored shadow looks like.

```
.shadow{ text-shadow: 4px 4px 2px #DEB9BF
}
```

Border

The CSS property to change the border of an element to Hex DEB9BF is called "border". The border property can be set on classes, ids or directly on the HTML element.

This example shows the color as border, it can be applied via the CSS property "border" or "border-color".

```
.border, #border, table{ border:4px solid
#DEB9BF }
```

If only the border color should be changed use the property `border-color`.

```
.border{ border-color:#DEB9BF }
```

If you want to add a box shadow in that color use:

Here you see how a box with a 4 pixel #DEB9BF colored shadow looks like.

```
.boxshadow{ -moz-box-shadow:4px 4px 4px  
4px #DEB9BF; -webkit-box-shadow:4px 4px  
4px 4px #DEB9BF; box-shadow:4px 4px 4px  
4px #DEB9BF }
```

Background

The CSS property to change the background color of an element to Hex DEB9BF is called "background". The background property can be set on classes, ids or directly on the HTML element.

```
.background, #background, body{  
background:#DEB9BF }
```

If only the background color should be changed can be used:

```
.background{ background-color:#DEB9BF }
```

This example shows the color as background, it is applied via the CSS property "background".

To optimize and compress your CSS code, you can use our [online CSS compressor and optimizer](#) based on csstidy. If you want to create a linear or radial gradient as background or border, check our [CSS Gradient Generator](#).

Hey! You found this booklet interesting? Support Converting Colors with the new Membership Option!

The pro membership hides all ads, plus gives you double the colors in the color bucket, and more awesome pro features!

[Learn more, Memberships starting at \\$2.50/m!](#)

**Follow me
on Twitter!**

@ConvertingColor