

Converting Colors

Hex(DEBAC2)

Have a look what the booklet for
Hex(DEBAC2) contains.

Hex(DEBAC2)	3
<i>Conversions</i>	4
<i>Details</i>	6
<i>Harmonies</i>	11
<i>Previews</i>	23
<i>Color Blindness Simulation</i>	26
<i>CSS Examples</i>	29

Color

Hex(DEBAC2)

Conversions

Conversions Part 1

Format	Color
Hex	DEBAC2
RGB	222, 186, 194
RGB Percent	87%, 73%, 76%
CMY	0.1294, 0.2706, 0.2392
CMYK	0.00, 0.16, 0.13, 0.13
HSL	347°, 35%, 80%
HSV	347°, 16%, 87%
XYZ	57.4207, 54.5424, 58.5403
YIQ	197.6760, 18.8880, 10.1200

Conversions

Conversions Part 2

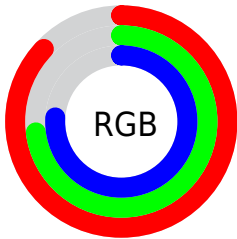
Format	Color
R _Y B	222, 186, 194
Decimal	14596802
CIE Lab	78.78, 14.16, 0.78
CIE LCh	79, 14.182, 3.156
Yxy	54.5424, 0.3368, 0.3199
Android (android.graphics.Color)	4292786882 (0xFFDEBAC2)
YUV	197.6760, -1.8123, 21.3321
Hunter-Lab	73.8529, 9.5415, 4.7001

Details

The Hex color **DEBAC2** is a light color, and the websafe version is hex **FFCCCC**. A complement of this color would be **BADED6**, and the grayscale version is **C6C6C6**.

A 20% lighter version of the original color is **FFF2FA**, and **A7858C** is the 20% darker color. If you saturate the color by 10%, you get **DEA4B1**, and if you desaturate by 10%, it is **DED0D3**.

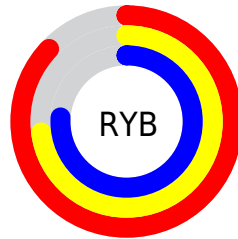
Distribution



Red (87%)

Green (73%)

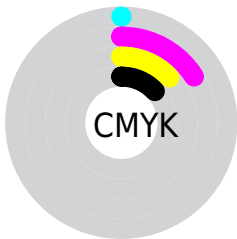
Blue (76%)



Red (87%)

Yellow (73%)

Blue (76%)

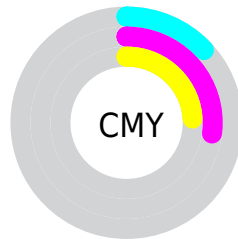


Cyan (0%)

Magenta (16%)

Yellow (13%)

Black (13%)



Cyan (13%)

Magenta (27%)

Yellow (24%)

Brightness & Saturation Gradients

These gradients show how the Hex color DEBAC2 changes by changing the brightness by 10 percent. The first figure shows a shift by +10% for each color and the second figure -10%.

Similar to the brightness gradients but the following saturation gradients show a change of the Hex color DEBAC2 by changing the saturation by 10% instead.

 DEBAC2

FFFFFF

 FFF2FA

 DEBAC2

 C29FA7

 A7858C

 8C6B73

 72535A

 593C43

 41262D

 2A1118

 140000

 000000

 DEBAC2

 DEBAC2

 DEA4B1

 DED0D3

 DE8E9F

 DEE6E5

 DE778E

 DEFDF6

 DE617D

 DEFFFF

 DE4B6C

 DE355A

 DE1F49

 DE0838

 DE0031

Harmonies

Analogous

The Analogous color harmony consists of three colors that are next to each other on the color wheel.



D6BCCF



DEBAC2



DFBBB5

Triad

The Triadic color harmony groups three colors that are evenly spaced from another and form a triangle on the color wheel.



DEBAC2



BDC7AD



A8C8DA

Complementary

The Complementary color scheme is a pair of colors which are on the opposite of each other on the color wheel.



DEBAC2



BADED6

Split Complementary

Split-complementary colors differ from the complementary color scheme. The scheme consists of three colors, the original color and two neighbors of the complement color.



A2CAD1



DEBAC2



AFCAB7

Square

The Square scheme is like the rectangle color scheme, but the four colors are evenly spaced on the color wheel.



DEBAC2



CCC2A9



A4CBC4



B7C4DD

Rectangle

The Rectangle color scheme consists of four colors that form a rectangle on the color wheel.



DEBAC2



DBBDAE



A4CBC4



A5C9D8

Sweetspot

The Sweet Spot groups the original color and five complimentary colors.



DEBAC2



FFF2F5



D6BADE



80787A



000000



808080

Same Dimension

The Same Dimension uses a secret algorithm to generate beautiful new colors.



DEBAC2



FFCFD9



DEC4BA



706567



B00027



30000B

Inverse Universe

The Inverse Universe completely reimagines the original color for something new.



DEBAC2



FFCFD9



BAD4DE



706567



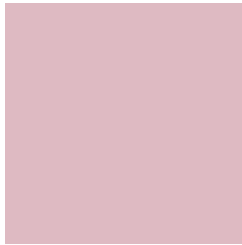
B00027



30000B

Previews

White Background



This preview shows how the Hex color DEBAC2 looks on a white background.

Color Contrast Check

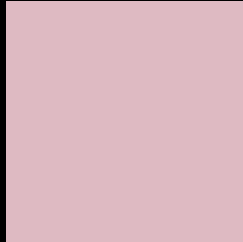
Large Text (above 18pt) WCAG AA × Fail

Any Text WCAG AA × Fail

Large Text (above 18pt) WCAG AAA × Fail

Any Text WCAG AAA × Fail

Black Background



This preview shows how the Hex color DEBAC2 looks on a black background.

Color Contrast Check

Large Text (above 18pt) WCAG AA ✓ Pass

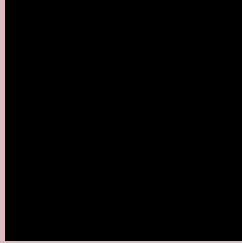
Any Text WCAG AA ✓ Pass

Large Text (above 18pt) WCAG AAA ✓ Pass

Any Text WCAG AAA ✓ Pass

If you want to check with other color combinations, try the [Color Contrast Checker](#).

Hex DEBAC2 Background



This preview shows how black text looks on a background with the Hex color DEBAC2.

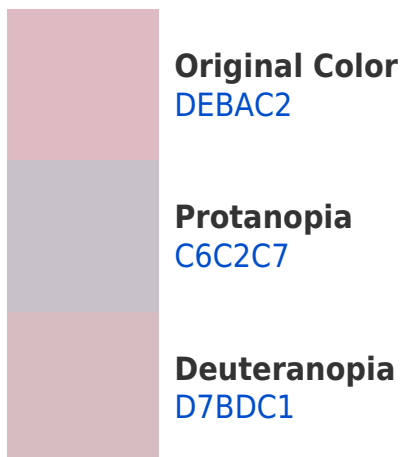


This preview shows how white text looks on a background with the Hex color DEBAC2.

Color Blindness Simulation

Color vision deficiency is a very complex topic, and I could not describe the different causes any better than Wikipedia does, so if you want to learn more, you should check out their [article about color blindness](#).

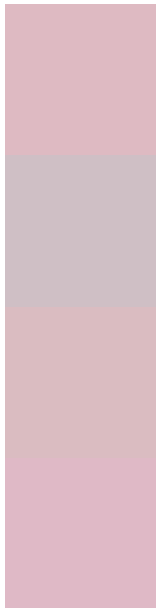
Dichromacy





Tritanopia
DFB9C8

Trichromacy



Original Color
DEBAC2

Protanomaly
CFBFC5

Deuteranomaly
DABCC1

Tritanomaly
DFB9C6

Monochromacy



Original Color
DEBAC2

Achromatopsia
C6C6C6

Achromatomaly
CFC2C5

CSS Examples

Text

The CSS property to change the color of the text to Hex DEBAC2 is called "color". The color property can be set on classes, ids or directly on the HTML element.

This example shows how text in the color #DEBAC2 looks like.

```
.text, #text, p{  
  color:#DEBAC2  
}
```

If you want to add a text shadow in that color use the text-shadow property, you can generate a text shadow directly with our [CSS Text Shadow Generator](#).

Here you see how black text with a 4 pixel #DEBAC2 colored shadow looks like.

```
.shadow{ text-shadow: 4px 4px 2px #DEBAC2
}
```

Border

The CSS property to change the border of an element to Hex DEBAC2 is called "border". The border property can be set on classes, ids or directly on the HTML element.

This example shows the color as border, it can be applied via the CSS property "border" or "border-color".

```
.border, #border, table{ border:4px solid
#DEBAC2 }
```

If only the border color should be changed use the property `border-color`.

```
.border{ border-color:#DEBAC2 }
```

If you want to add a box shadow in that color use:

Here you see how a box with a 4 pixel #DEBAC2 colored shadow looks like.

```
.boxshadow{ -moz-box-shadow:4px 4px 4px  
4px #DEBAC2; -webkit-box-shadow:4px 4px  
4px 4px #DEBAC2; box-shadow:4px 4px 4px  
4px #DEBAC2 }
```

Background

The CSS property to change the background color of an element to Hex DEBAC2 is called "background". The background property can be set on classes, ids or directly on the HTML element.

```
.background, #background, body{  
background:#DEBAC2 }
```

If only the background color should be changed can be used:

```
.background{ background-color:#DEBAC2 }
```

This example shows the color as background, it is applied via the CSS property "background".

To optimize and compress your CSS code, you can use our [online CSS compressor and optimizer](#) based on csstidy. If you want to create a linear or radial gradient as background or border, check our [CSS Gradient Generator](#).

Hey! You found this booklet interesting? Support Converting Colors with the new Membership Option!

The pro membership hides all ads, plus gives you double the colors in the color bucket, and more awesome pro features!

[Learn more, Memberships starting at \\$2.50/m!](#)

**Follow me
on Twitter!**

@ConvertingColor