

# Converting Colors

Hex(DEBEC0)

Have a look what the booklet for  
Hex(DEBEC0) contains.

<b>Hex(DEBEC0)</b> .....	3
<i><b>Conversions</b></i> .....	4
<i><b>Details</b></i> .....	6
<i><b>Harmonies</b></i> .....	11
<i><b>Previews</b></i> .....	23
<i><b>Color Blindness Simulation</b></i> .....	26
<i><b>CSS Examples</b></i> .....	29

# **Color**

**Hex(DEBEC0)**

# Conversions

## Conversions Part 1

<b>Format</b>	<b>Color</b>
Hex	DEBEC0
RGB	222, 190, 192
RGB Percent	87%, 75%, 75%
CMY	0.1294, 0.2549, 0.2471
CMYK	0.00, 0.14, 0.14, 0.13
HSL	356°, 33%, 81%
HSV	356°, 14%, 87%
XYZ	58.0521, 56.1623, 57.6499
YIQ	199.7960, 18.4300, 7.4060

# Conversions

## Conversions Part 2

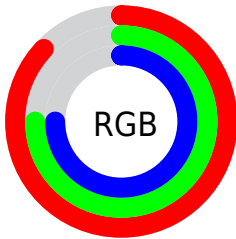
Format	Color
R <sub>Y</sub> B	222, 190, 192
Decimal	14597824
CIE Lab	79.71, 11.70, 3.21
CIE LCh	80, 12.132, 15.350
Yxy	56.1623, 0.3378, 0.3268
Android (android.graphics.Color)	4292787904 (0xFFDEBEC0)
YUV	199.7960, -3.8434, 19.4729
Hunter-Lab	74.9415, 7.1242, 6.8493

# Details

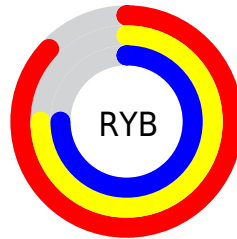
The Hex color **DEBEC0** is a light color, and the websafe version is hex **FFCCCC**. A complement of this color would be **BEDEDC**, and the grayscale version is **C8C8C8**.

A 20% lighter version of the original color is **FFF6F8**, and **A7898B** is the 20% darker color. If you saturate the color by 10%, you get **DEA8AB**, and if you desaturate by 10%, it is **DED4D5**.

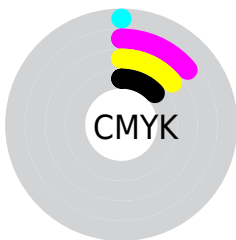
# Distribution



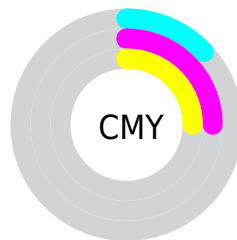
- Red (87%)
- Green (75%)
- Blue (75%)



- Red (87%)
- Yellow (75%)
- Blue (75%)



- Cyan (0%)
- Magenta (14%)
- Yellow (14%)
- Black (13%)



- Cyan (13%)
- Magenta (25%)
- Yellow (25%)

# Brightness & Saturation Gradients

These gradients show how the Hex color DEBEC0 changes by changing the brightness by 10 percent. The first figure shows a shift by +10% for each color and the second figure -10%.

Similar to the brightness gradients but the following saturation gradients show a change of the Hex color DEBEC0 by changing the saturation by 10% instead.



 DEBEC0

FFFFFF

 FFF6F8

 DEBEC0

 C2A3A5

 A7898B

 8C6F71

 725759

 593F41

 41292B

 2B1517

 160000

 000000

 DEBEC0

 DEBEC0

 DEA8AB

 DED4D5

 DE9296

 DEEAEA

 DE7B82

 DEFFFE

 DE656D

 DEFFFF

 DE4F58

 DE3943

 DE232E

 DE0C1A

 DE000E

# Harmonies

## Analogous

The Analogous color harmony consists of three colors that are next to each other on the color wheel.



D9BECC



DEBEC0



DCC0B6

# Triad

The Triadic color harmony groups three colors that are evenly spaced from another and form a triangle on the color wheel.



DEBEC0



BCCAB5



B3C8DB

# Complementary

The Complementary color scheme is a pair of colors which are on the opposite of each other on the color wheel.



DEBEC0



BEDEDC

# Split Complementary

Split-complementary colors differ from the complementary color scheme. The scheme consists of three colors, the original color and two neighbors of the complement color.



ABCBD5



DEBEC0



B0CCBF

# Square

The Square scheme is like the rectangle color scheme, but the four colors are evenly spaced on the color wheel.



DEBEC0



C9C7B0



AACCCB



C1C5DB

# Rectangle

The Rectangle color scheme consists of four colors that form a rectangle on the color wheel.



DEBEC0



D8C2B1



AACCCB



B0C9DA



# Sweetspot

The Sweet Spot groups the original color and five complimentary colors.



DEBEC0



FFF5F5



DCBEDE



80797A



000000



808080



# Same Dimension

The Same Dimension uses a secret algorithm to generate beautiful new colors.



DEBEC0



FFD4D6



DECCBE



706566



B0000B



300003



# Inverse Universe

The Inverse Universe completely reimagines the original color for something new.



DEBEC0



FFD4D6



BED0DE



706566



B0000B



300003



# Previews

## White Background



This preview shows how the Hex color DEBEC0 looks on a white background.

## Color Contrast Check

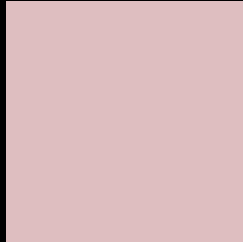
Large Text (above 18pt) WCAG AA × Fail

Any Text WCAG AA × Fail

Large Text (above 18pt) WCAG AAA × Fail

Any Text WCAG AAA × Fail

# Black Background



This preview shows how the Hex color DEBEC0 looks on a black background.

## Color Contrast Check

Large Text (above 18pt) WCAG AA ✓ Pass

Any Text WCAG AA ✓ Pass

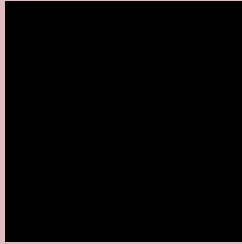
Large Text (above 18pt) WCAG AAA ✓ Pass

Any Text WCAG AAA ✓ Pass

If you want to check with other color combinations, try the [Color Contrast Checker](#).



## Hex DEBEC0 Background



This preview shows how black text looks on a background with the Hex color DEBEC0.



This preview shows how white text looks on a background with the Hex color DEBEC0.

# Color Blindness Simulation

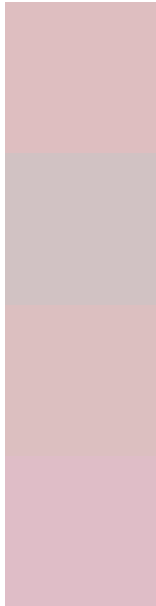
Color vision deficiency is a very complex topic, and I could not describe the different causes any better than Wikipedia does, so if you want to learn more, you should check out their [article about color blindness](#).

## Dichromacy





# Trichromacy



**Original Color**  
DEBEC0

**Protanomaly**  
D1C2C3

**Deuteranomaly**  
DCBFC0

**Tritanomaly**  
DFBDC7

# Monochromacy



**Original Color**  
DEBEC0

**Achromatopsia**  
C8C8C8

**Achromatomaly**  
D0C4C5

# CSS Examples

## Text

The CSS property to change the color of the text to Hex DEBEC0 is called "color". The color property can be set on classes, ids or directly on the HTML element.

This example shows how text in the color #DEBEC0 looks like.

```
.text, #text, p{  
    color:#DEBEC0  
}
```

If you want to add a text shadow in that color use the text-shadow property, you can generate a text shadow directly with our [CSS Text Shadow Generator](#).

Here you see how black text with a 4 pixel #DEBEC0 colored shadow looks like.

```
.shadow{ text-shadow: 4px 4px 2px #DEBEC0
}
```

## Border

The CSS property to change the border of an element to Hex DEBEC0 is called "border". The border property can be set on classes, ids or directly on the HTML element.

This example shows the color as border, it can be applied via the CSS property "border" or "border-color".

```
.border, #border, table{ border:4px solid
#DEBEC0 }
```

If only the border color should be changed use the property `border-color`.

```
.border{ border-color:#DEBEC0 }
```

If you want to add a box shadow in that color use:

Here you see how a box with a 4 pixel #DEBEC0 colored shadow looks like.

```
.boxshadow{ -moz-box-shadow:4px 4px 4px  
4px #DEBEC0; -webkit-box-shadow:4px 4px  
4px 4px #DEBEC0; box-shadow:4px 4px 4px  
4px #DEBEC0 }
```

# Background

The CSS property to change the background color of an element to Hex DEBEC0 is called "background". The background property can be set on classes, ids or directly on the HTML element.

```
.background, #background, body{  
background:#DEBEC0 }
```

If only the background color should be changed can be used:

```
.background{ background-color:#DEBEC0 }
```

This example shows the color as background, it is applied via the CSS property "background".

To optimize and compress your CSS code, you can use our [online CSS compressor and optimizer](#) based on csstidy. If you want to create a linear or radial gradient as background or border, check our [CSS Gradient Generator](#).



Hey! You found this booklet interesting? Support Converting Colors with the new Membership Option!

The pro membership hides all ads, plus gives you double the colors in the color bucket, and more awesome pro features!

**[Learn more, Memberships starting at \\$2.50/m!](#)**

**Follow me  
on Twitter!**

@ConvertingColor