

Converting Colors

Hex(DEBFC0)

Have a look what the booklet for
Hex(DEBFC0) contains.

| | |
|--|----|
| Hex(DEBFC0) | 3 |
| <i>Conversions</i> | 4 |
| <i>Details</i> | 6 |
| <i>Harmonies</i> | 11 |
| <i>Previews</i> | 23 |
| <i>Color Blindness Simulation</i> | 26 |
| <i>CSS Examples</i> | 29 |

Color

Hex(DEBFC0)

Conversions

Conversions Part 1

| Format | Color |
|---------------|---------------------------|
| Hex | DEBFC0 |
| RGB | 222, 191, 192 |
| RGB Percent | 87%, 75%, 75% |
| CMY | 0.1294, 0.2510, 0.2471 |
| CMYK | 0.00, 0.14, 0.14, 0.13 |
| HSL | 358°, 32%, 81% |
| HSV | 358°, 14%, 87% |
| XYZ | 58.2694, 56.5970, 57.7223 |
| YIQ | 200.3830, 18.1550, 6.8830 |

Conversions

Conversions Part 2

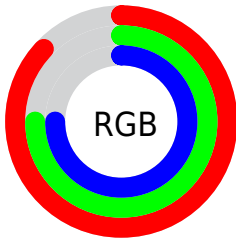
| Format | Color |
|-------------------------------------|-------------------------------|
| R _Y B | 222, 191, 192 |
| Decimal | 14598080 |
| CIE Lab | 79.95, 11.17, 3.57 |
| CIE LCh | 80, 11.722, 17.722 |
| Yxy | 56.5970, 0.3376, 0.3279 |
| Android (android.graphics.Color) | 4292788160 (0xFFDEBFC0) |
| YUV | 200.3830, -4.1328, 18.9581 |
| Hunter-Lab | 75.2310, 6.6013, 7.1703 |

Details

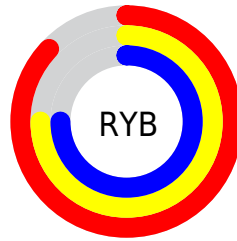
The Hex color **DEBFC0** is a light color, and the websafe version is hex **FFCCCC**. A complement of this color would be **BFDEDD**, and the grayscale version is **C8C8C8**.

A 20% lighter version of the original color is **FFF7F8**, and **A78A8B** is the 20% darker color. If you saturate the color by 10%, you get **DEA9AB**, and if you desaturate by 10%, it is **DED5D5**.

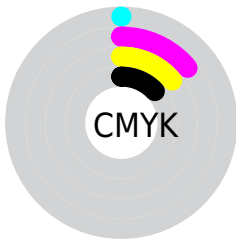
Distribution



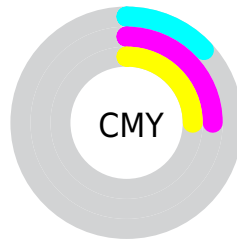
- Red (87%)
- Green (75%)
- Blue (75%)



- Red (87%)
- Yellow (75%)
- Blue (75%)



- Cyan (0%)
- Magenta (14%)
- Yellow (14%)
- Black (13%)



- Cyan (13%)
- Magenta (25%)
- Yellow (25%)

Brightness & Saturation Gradients

These gradients show how the Hex color DEBFC0 changes by changing the brightness by 10 percent. The first figure shows a shift by +10% for each color and the second figure -10%.

Similar to the brightness gradients but the following saturation gradients show a change of the Hex color DEBFC0 by changing the saturation by 10% instead.

 DEBFC0

 DEBFC0

FFFFFF

 C2A4A5

 FFF7F8

 A78A8B

 8C7071

 725859

 594041

 422A2B

 2B1517

 170000

 000000

 DEBFC0

 DEBFC0

 DEA9AB

 DED5D5

 DE9395

 DEEBEB

 DE7C80

 DEFFFF

 DE666A

 DE5055

 DE3A3F

 DE242A

 DE0D14

 DE0007

Harmonies

Analogous

The Analogous color harmony consists of three colors that are next to each other on the color wheel.



DABFCB



DEBFC0



DCC1B6

Triad

The Triadic color harmony groups three colors that are evenly spaced from another and form a triangle on the color wheel.



DEBFC0



BCCBB7



B6C9DB

Complementary

The Complementary color scheme is a pair of colors which are on the opposite of each other on the color wheel.



DEBFC0



BFDEDD

Split Complementary

Split-complementary colors differ from the complementary color scheme. The scheme consists of three colors, the original color and two neighbors of the complement color.



ADCBD6



DEBFC0



B1CCC1

Square

The Square scheme is like the rectangle color scheme, but the four colors are evenly spaced on the color wheel.



DEBFC0



C8C8B1



ABCDCC



C3C5DB

Rectangle

The Rectangle color scheme consists of four colors that form a rectangle on the color wheel.



DEBFC0



D7C3B2



ABCDCC



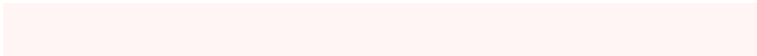
B2CADA

Sweetspot

The Sweet Spot groups the original color and five complimentary colors.



DEBFC0



FFF5F5



DDBFDE



807979



000000



808080

Same Dimension

The Same Dimension uses a secret algorithm to generate beautiful new colors.



DEBFC0



FFD4D5



DECDBF



706565



B00006



300002

Inverse Universe

The Inverse Universe completely reimagines the original color for something new.



DEBFC0



FFD4D5



BFD0DE



706565



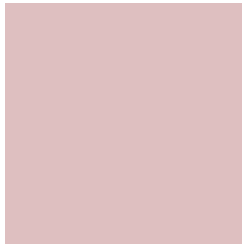
B00006



300002

Previews

White Background



This preview shows how the Hex color DEBFC0 looks on a white background.

Color Contrast Check

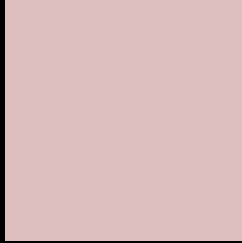
Large Text (above 18pt) WCAG AA × Fail

Any Text WCAG AA × Fail

Large Text (above 18pt) WCAG AAA × Fail

Any Text WCAG AAA × Fail

Black Background



This preview shows how the Hex color DEBFC0 looks on a black background.

Color Contrast Check

Large Text (above 18pt) WCAG AA ✓ Pass

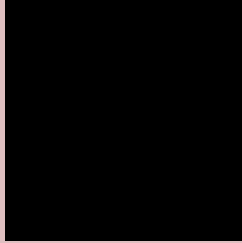
Any Text WCAG AA ✓ Pass

Large Text (above 18pt) WCAG AAA ✓ Pass

Any Text WCAG AAA ✓ Pass

If you want to check with other color combinations, try the [Color Contrast Checker](#).

Hex DEBFC0 Background



This preview shows how black text looks on a background with the Hex color DEBFC0.



This preview shows how white text looks on a background with the Hex color DEBFC0.

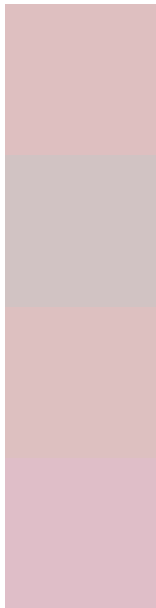
Color Blindness Simulation

Color vision deficiency is a very complex topic, and I could not describe the different causes any better than Wikipedia does, so if you want to learn more, you should check out their [article about color blindness](#).

Dichromacy



Trichromacy



Original Color
DEBFC0

Protanomaly
D1C3C3

Deuteranomaly
DDC0C0

Tritanomaly
DFBEC8

Monochromacy



Original Color
DEBFC0

Achromatopsia
C8C8C8

Achromatomaly
D0C5C5

CSS Examples

Text

The CSS property to change the color of the text to Hex DEBFC0 is called "color". The color property can be set on classes, ids or directly on the HTML element.

This example shows how text in the color #DEBFC0 looks like.

```
.text, #text, p{  
    color:#DEBFC0  
}
```

If you want to add a text shadow in that color use the text-shadow property, you can generate a text shadow directly with our [CSS Text Shadow Generator](#).

Here you see how black text with a 4 pixel #DEBFC0 colored shadow looks like.

```
.shadow{ text-shadow: 4px 4px 2px #DEBFC0
}
```

Border

The CSS property to change the border of an element to Hex DEBFC0 is called "border". The border property can be set on classes, ids or directly on the HTML element.

This example shows the color as border, it can be applied via the CSS property "border" or "border-color".

```
.border, #border, table{ border:4px solid
#DEBFC0 }
```

If only the border color should be changed use the property `border-color`.

```
.border{ border-color:#DEBFC0 }
```

If you want to add a box shadow in that color use:

Here you see how a box with a 4 pixel #DEBFC0 colored shadow looks like.

```
.boxshadow{ -moz-box-shadow:4px 4px 4px  
4px #DEBFC0; -webkit-box-shadow:4px 4px  
4px 4px #DEBFC0; box-shadow:4px 4px 4px  
4px #DEBFC0 }
```

Background

The CSS property to change the background color of an element to Hex DEBFC0 is called "background". The background property can be set on classes, ids or directly on the HTML element.

```
.background, #background, body{  
background:#DEBFC0 }
```

If only the background color should be changed can be used:

```
.background{ background-color:#DEBFC0 }
```

This example shows the color as background, it is applied via the CSS property "background".

To optimize and compress your CSS code, you can use our [online CSS compressor and optimizer](#) based on csstidy. If you want to create a linear or radial gradient as background or border, check our [CSS Gradient Generator](#).

Hey! You found this booklet interesting? Support Converting Colors with the new Membership Option!

The pro membership hides all ads, plus gives you double the colors in the color bucket, and more awesome pro features!

[Learn more, Memberships starting at \\$2.50/m!](#)

**Follow me
on Twitter!**

@ConvertingColor