

Converting Colors

Hex(DEBFC8)

Have a look what the booklet for
Hex(DEBFC8) contains.

Hex(DEBFC8)	3
<i>Conversions</i>	4
<i>Details</i>	6
<i>Harmonies</i>	11
<i>Previews</i>	23
<i>Color Blindness Simulation</i>	26
<i>CSS Examples</i>	29

Color

Hex(DEBFC8)

Conversions

Conversions Part 1

Format	Color
Hex	DEBFC8
RGB	222, 191, 200
RGB Percent	87%, 75%, 78%
CMY	0.1294, 0.2510, 0.2157
CMYK	0.00, 0.14, 0.10, 0.13
HSL	343°, 32%, 81%
HSV	343°, 14%, 87%
XYZ	59.1803, 56.9613, 62.5191
YIQ	201.2950, 15.5870, 9.3710

Conversions

Conversions Part 2

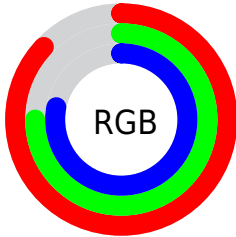
Format	Color
R _Y B	222, 191, 200
Decimal	14598088
CIE Lab	80.16, 12.48, -0.44
CIE LCh	80, 12.490, 357.970
Yxy	56.9613, 0.3312, 0.3188
Android (android.graphics.Color)	4292788168 (0xFFDEBFC8)
YUV	201.2950, -0.6384, 18.1583
Hunter-Lab	75.4727, 7.8897, 3.7171

Details

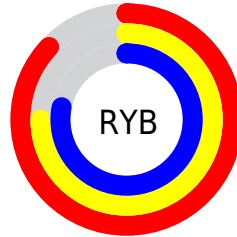
The Hex color **DEBFC8** is a light color, and the websafe version is hex **FFCCCC**. A complement of this color would be **BFDED5**, and the grayscale version is **C9C9C9**.

A 20% lighter version of the original color is **FFF7FF**, and **A78A92** is the 20% darker color. If you saturate the color by 10%, you get **DEA9B8**, and if you desaturate by 10%, it is **DED5D8**.

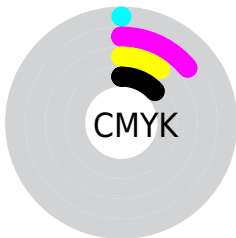
Distribution



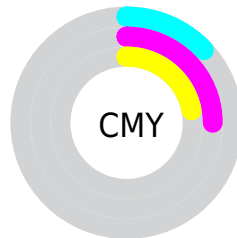
- Red (87%)
- Green (75%)
- Blue (78%)



- Red (87%)
- Yellow (75%)
- Blue (78%)



- Cyan (0%)
- Magenta (14%)
- Yellow (10%)
- Black (13%)



- Cyan (13%)
- Magenta (25%)
- Yellow (22%)

Brightness & Saturation Gradients

These gradients show how the Hex color DEBFC8 changes by changing the brightness by 10 percent. The first figure shows a shift by +10% for each color and the second figure -10%.

Similar to the brightness gradients but the following saturation gradients show a change of the Hex color DEBFC8 by changing the saturation by 10% instead.

 DEBFC8

FFFFFF

 FFF7FF

 DEBFC8

 C2A4AD

 A78A92

 8C7078

 725860

 5A4048

 422A32

 2B151D

 190002

 000000

 DEBFC8

 DEBFC8

 DEA9B8

 DED5D8

 DE93A8

 DEEBE8

 DE7C99

 DEFFF7

 DE6689

 DEFFFF

 DE5079

 DE3A69

 DE245A

 DE0D4A

 DE0040

Harmonies

Analogous

The Analogous color harmony consists of three colors that are next to each other on the color wheel.



D6C1D3



DEBFC8



E0BFBC

Triad

The Triadic color harmony groups three colors that are evenly spaced from another and form a triangle on the color wheel.



DEBFC8



C4C9B2



AECBDA

Complementary

The Complementary color scheme is a pair of colors which are on the opposite of each other on the color wheel.



DEBFC8



BFDED5

Split Complementary

Split-complementary colors differ from the complementary color scheme. The scheme consists of three colors, the original color and two neighbors of the complement color.



A9CDD1



DEBFC8



B7CCBA

Square

The Square scheme is like the rectangle color scheme, but the four colors are evenly spaced on the color wheel.



DEBFC8



D1C6B0



ADCEC6



BAC8DE

Rectangle

The Rectangle color scheme consists of four colors that form a rectangle on the color wheel.



DEBFC8



DEC1B6



ADCEC6



ACCCD8

Sweetspot

The Sweet Spot groups the original color and five complimentary colors.



DEBFC8



FFF5F8



D5BFDE



80797B



000000



808080

Same Dimension

The Same Dimension uses a secret algorithm to generate beautiful new colors.



DEBFC8



FFD4E0



DEC5BF



706568



B00033



30000E

Inverse Universe

The Inverse Universe completely reimagines the original color for something new.



DEBFC8



FFD4E0



BFD8DE



706568



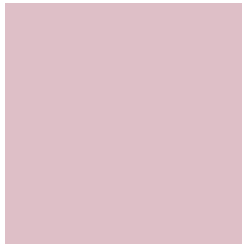
B00033



30000E

Previews

White Background



This preview shows how the Hex color DEBFC8 looks on a white background.

Color Contrast Check

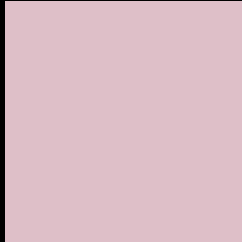
Large Text (above 18pt) WCAG AA × Fail

Any Text WCAG AA × Fail

Large Text (above 18pt) WCAG AAA × Fail

Any Text WCAG AAA × Fail

Black Background



This preview shows how the Hex color DEBFC8 looks on a black background.

Color Contrast Check

Large Text (above 18pt) WCAG AA ✓ Pass

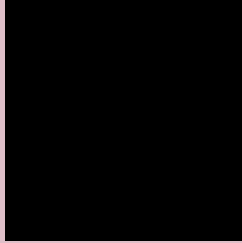
Any Text WCAG AA ✓ Pass

Large Text (above 18pt) WCAG AAA ✓ Pass

Any Text WCAG AAA ✓ Pass

If you want to check with other color combinations, try the [Color Contrast Checker](#).

Hex DEBFC8 Background



This preview shows how black text looks on a background with the Hex color DEBFC8.

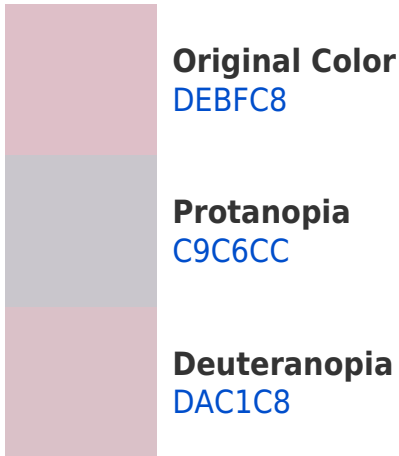


This preview shows how white text looks on a background with the Hex color DEBFC8.

Color Blindness Simulation

Color vision deficiency is a very complex topic, and I could not describe the different causes any better than Wikipedia does, so if you want to learn more, you should check out their [article about color blindness](#).

Dichromacy



Trichromacy



Original Color
DEBFC8

Protanomaly
D1C3CB

Deuteranomaly
DBC0C8

Tritanomaly
DFBECB

Monochromacy



Original Color
DEBFC8

Achromatopsia
C9C9C9

Achromatomaly
D1C5C9

CSS Examples

Text

The CSS property to change the color of the text to Hex DEBFC8 is called "color". The color property can be set on classes, ids or directly on the HTML element.

This example shows how text in the color #DEBFC8 looks like.

```
.text, #text, p{  
    color:#DEBFC8  
}
```

If you want to add a text shadow in that color use the text-shadow property, you can generate a text shadow directly with our [CSS Text Shadow Generator](#).

Here you see how black text with a 4 pixel #DEBFC8 colored shadow looks like.

```
.shadow{ text-shadow: 4px 4px 2px #DEBFC8  
}
```

Border

The CSS property to change the border of an element to Hex DEBFC8 is called "border". The border property can be set on classes, ids or directly on the HTML element.

This example shows the color as border, it can be applied via the CSS property "border" or "border-color".

```
.border, #border, table{ border:4px solid  
#DEBFC8 }
```

If only the border color should be changed use the property `border-color`.

```
.border{ border-color:#DEBFC8 }
```

If you want to add a box shadow in that color use:

Here you see how a box with a 4 pixel #DEBFC8 colored shadow looks like.

```
.boxshadow{ -moz-box-shadow:4px 4px 4px  
4px #DEBFC8; -webkit-box-shadow:4px 4px  
4px 4px #DEBFC8; box-shadow:4px 4px 4px  
4px #DEBFC8 }
```

Background

The CSS property to change the background color of an element to Hex DEBFC8 is called "background". The background property can be set on classes, ids or directly on the HTML element.

```
.background, #background, body{  
background:#DEBFC8 }
```

If only the background color should be changed can be used:

```
.background{ background-color:#DEBFC8 }
```

This example shows the color as background, it is applied via the CSS property "background".

To optimize and compress your CSS code, you can use our [online CSS compressor and optimizer](#) based on csstidy. If you want to create a linear or radial gradient as background or border, check our [CSS Gradient Generator](#).

Hey! You found this booklet interesting? Support Converting Colors with the new Membership Option!

The pro membership hides all ads, plus gives you double the colors in the color bucket, and more awesome pro features!

[Learn more, Memberships starting at \\$2.50/m!](#)

**Follow me
on Twitter!**

@ConvertingColor