

Converting Colors

Hex(DEC0C3)

Have a look what the booklet for
Hex(DEC0C3) contains.

Hex(DEC0C3)	3
<i>Conversions</i>	4
<i>Details</i>	6
<i>Harmonies</i>	11
<i>Previews</i>	23
<i>Color Blindness Simulation</i>	26
<i>CSS Examples</i>	29

Color

Hex(DEC0C3)

Conversions

Conversions Part 1

Format	Color
Hex	DEC0C3
RGB	222, 192, 195
RGB Percent	87%, 75%, 76%
CMY	0.1294, 0.2471, 0.2353
CMYK	0.00, 0.14, 0.12, 0.13
HSL	354°, 31%, 81%
HSV	354°, 14%, 87%
XYZ	58.8242, 57.1690, 59.5641
YIQ	201.3120, 16.9170, 7.2930

Conversions

Conversions Part 2

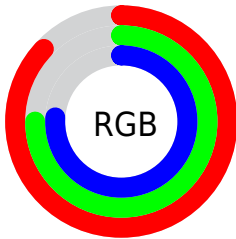
Format	Color
R _Y B	222, 192, 195
Decimal	14598339
CIE Lab	80.27, 11.12, 2.42
CIE LCh	80, 11.381, 12.277
Yxy	57.1690, 0.3351, 0.3256
Android (android.graphics.Color)	4292788419 (0xFFDEC0C3)
YUV	201.3120, -3.1118, 18.1434
Hunter-Lab	75.6102, 6.5539, 6.2197

Details

The Hex color **DEC0C3** is a light color, and the websafe version is hex **FFCCCC**. A complement of this color would be **C0DEDB**, and the grayscale version is **C9C9C9**.

A 20% lighter version of the original color is **FFF8FC**, and **A78A8D** is the 20% darker color. If you saturate the color by 10%, you get **DEAAAF**, and if you desaturate by 10%, it is **DED6D7**.

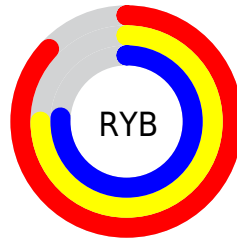
Distribution



Red (87%)

Green (75%)

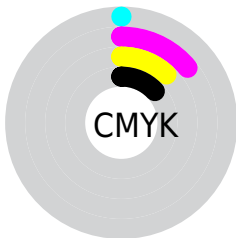
Blue (76%)



Red (87%)

Yellow (75%)

Blue (76%)

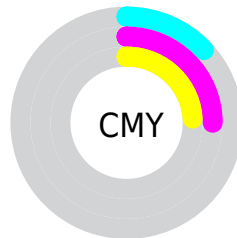


Cyan (0%)

Magenta (14%)

Yellow (12%)

Black (13%)



Cyan (13%)

Magenta (25%)

Yellow (24%)

Brightness & Saturation Gradients

These gradients show how the Hex color DEC0C3 changes by changing the brightness by 10 percent. The first figure shows a shift by +10% for each color and the second figure -10%.

Similar to the brightness gradients but the following saturation gradients show a change of the Hex color DEC0C3 by changing the saturation by 10% instead.

 DEC0C3

FFFFFF

 FFF8FC

 DEC0C3

 C2A5A8

 A78A8D

 8C7174

 72585B

 5A4144

 422B2E

 2B1619

 180000

 000000

 DEC0C3

 DEC0C3

 DEAAAF

 DED6D7

 DE949B

 DEECEB

 DE7D87

 DEFFFF

 DE6773

 DE515F

 DE3B4B

 DE2537

 DE0E23

 DE0016

Harmonies

Analogous

The Analogous color harmony consists of three colors that are next to each other on the color wheel.



D9C1CE



DEC0C3



DDC1B9

Triad

The Triadic color harmony groups three colors that are evenly spaced from another and form a triangle on the color wheel.



DEC0C3



BFCBB7



B5CADB

Complementary

The Complementary color scheme is a pair of colors which are on the opposite of each other on the color wheel.



DEC0C3



CODEDB

Split Complementary

Split-complementary colors differ from the complementary color scheme. The scheme consists of three colors, the original color and two neighbors of the complement color.



AECCD5



DEC0C3



B4CDC0

Square

The Square scheme is like the rectangle color scheme, but the four colors are evenly spaced on the color wheel.



DEC0C3



CBC8B2



ADCECB



C1C7DC

Rectangle

The Rectangle color scheme consists of four colors that form a rectangle on the color wheel.



DEC0C3



D9C3B5



ADCECB



B2CBDA

Sweetspot

The Sweet Spot groups the original color and five complimentary colors.



DEC0C3



FFF5F6



DBC0DE



80797A



000000



808080

Same Dimension

The Same Dimension uses a secret algorithm to generate beautiful new colors.



DEC0C3



FFD6DA



DECCC0



706566



B00012



300005

Inverse Universe

The Inverse Universe completely reimagines the original color for something new.



DEC0C3



FFD6DA



C0D2DE



706566



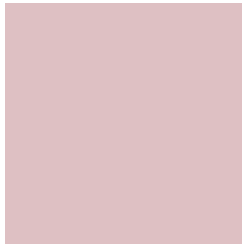
B00012



300005

Previews

White Background



This preview shows how the Hex color DEC0C3 looks on a white background.

Color Contrast Check

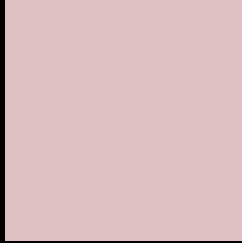
Large Text (above 18pt) WCAG AA × Fail

Any Text WCAG AA × Fail

Large Text (above 18pt) WCAG AAA × Fail

Any Text WCAG AAA × Fail

Black Background



This preview shows how the Hex color DEC0C3 looks on a black background.

Color Contrast Check

Large Text (above 18pt) WCAG AA ✓ Pass

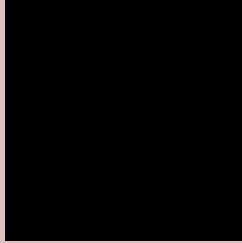
Any Text WCAG AA ✓ Pass

Large Text (above 18pt) WCAG AAA ✓ Pass

Any Text WCAG AAA ✓ Pass

If you want to check with other color combinations, try the [Color Contrast Checker](#).

Hex DEC0C3 Background



This preview shows how black text looks on a background with the Hex color DEC0C3.

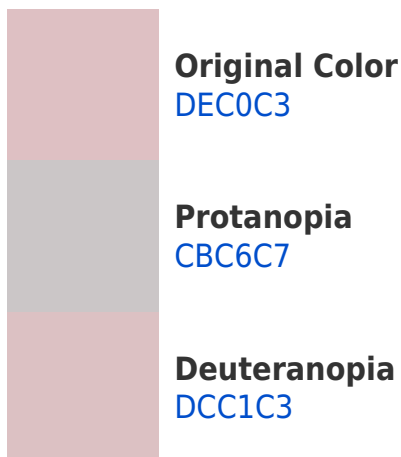


This preview shows how white text looks on a background with the Hex color DEC0C3.

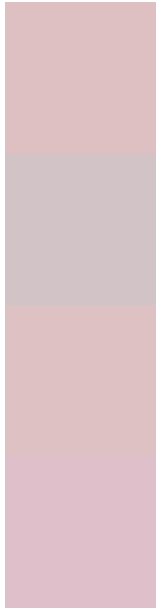
Color Blindness Simulation

Color vision deficiency is a very complex topic, and I could not describe the different causes any better than Wikipedia does, so if you want to learn more, you should check out their [article about color blindness](#).

Dichromacy



Trichromacy



Original Color
DEC0C3

Protanomaly
D2C4C6

Deuteranomaly
DDC1C3

Tritanomaly
DFBFC9

Monochromacy



Original Color
DEC0C3

Achromatopsia
C9C9C9

Achromatomaly
D1C6C7

CSS Examples

Text

The CSS property to change the color of the text to Hex DEC0C3 is called "color". The color property can be set on classes, ids or directly on the HTML element.

This example shows how text in the color #DEC0C3 looks like.

```
.text, #text, p{  
    color:#DEC0C3  
}
```

If you want to add a text shadow in that color use the text-shadow property, you can generate a text shadow directly with our [CSS Text Shadow Generator](#).

Here you see how black text with a 4 pixel #DEC0C3 colored shadow looks like.

```
.shadow{ text-shadow: 4px 4px 2px #DEC0C3
}
```

Border

The CSS property to change the border of an element to Hex DEC0C3 is called "border". The border property can be set on classes, ids or directly on the HTML element.

This example shows the color as border, it can be applied via the CSS property "border" or "border-color".

```
.border, #border, table{ border:4px solid
#DEC0C3 }
```

If only the border color should be changed use the property `border-color`.

```
.border{ border-color:#DEC0C3 }
```

If you want to add a box shadow in that color use:

Here you see how a box with a 4 pixel #DEC0C3 colored shadow looks like.

```
.boxshadow{ -moz-box-shadow:4px 4px 4px  
4px #DEC0C3; -webkit-box-shadow:4px 4px  
4px 4px #DEC0C3; box-shadow:4px 4px 4px  
4px #DEC0C3 }
```

Background

The CSS property to change the background color of an element to Hex DEC0C3 is called "background". The background property can be set on classes, ids or directly on the HTML element.

```
.background, #background, body{  
background:#DEC0C3 }
```

If only the background color should be changed can be used:

```
.background{ background-color:#DEC0C3 }
```

This example shows the color as background, it is applied via the CSS property "background".

To optimize and compress your CSS code, you can use our [online CSS compressor and optimizer](#) based on csstidy. If you want to create a linear or radial gradient as background or border, check our [CSS Gradient Generator](#).

Hey! You found this booklet interesting? Support Converting Colors with the new Membership Option!

The pro membership hides all ads, plus gives you double the colors in the color bucket, and more awesome pro features!

[Learn more, Memberships starting at \\$2.50/m!](#)

**Follow me
on Twitter!**

@ConvertingColor