

Converting Colors

Hex(DEC1A4)

Have a look what the booklet for
Hex(DEC1A4) contains.

Hex(DEC1A4)	3
<i>Conversions</i>	4
<i>Details</i>	6
<i>Harmonies</i>	11
<i>Previews</i>	23
<i>Color Blindness Simulation</i>	26
<i>CSS Examples</i>	29

Color

Hex(DEC1A4)

Conversions

Conversions Part 1

Format	Color
Hex	DEC1A4
RGB	222, 193, 164
RGB Percent	87%, 76%, 64%
CMY	0.1294, 0.2431, 0.3569
CMYK	0.00, 0.13, 0.26, 0.13
HSL	30°, 47%, 76%
HSV	30°, 26%, 87%
XYZ	55.8950, 56.3499, 43.0526
YIQ	198.3650, 26.5930, -2.8710

Conversions

Conversions Part 2

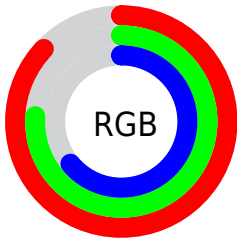
Format	Color
RYB	222, 222, 164
Decimal	14598564
CIELab	79.81, 5.92, 18.40
CIELCh	80, 19.328, 72.166
Yxy	56.3499, 0.3599, 0.3629
Android (android.graphics.Color)	4292788644 (0xFFDEC1A4)
YUV	198.3650, -16.9419, 20.7279
Hunter-Lab	75.0665, 1.5457, 18.5422

Details

The Hex color **DEC1A4** is a light color, and the websafe version is hex **CCCC99**. A complement of this color would be **A4C1DE**, and the grayscale version is **C7C7C7**.

A 20% lighter version of the original color is **FFF9DB**, and **A68C70** is the 20% darker color. If you saturate the color by 10%, you get **DEB68E**, and if you desaturate by 10%, it is **DECCBA**.

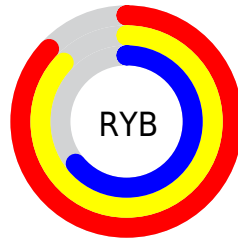
Distribution



Red (87%)

Green (76%)

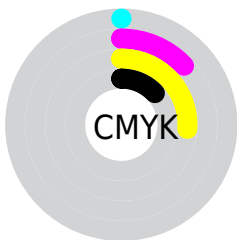
Blue (64%)



Red (87%)

Yellow (87%)

Blue (64%)

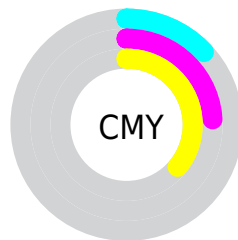


Cyan (0%)

Magenta (13%)

Yellow (26%)

Black (13%)



Cyan (13%)

Magenta (24%)

Yellow (36%)

Brightness & Saturation Gradients

These gradients show how the Hex color DEC1A4 changes by changing the brightness by 10 percent. The first figure shows a shift by +10% for each color and the second figure -10%.

Similar to the brightness gradients but the following saturation gradients show a change of the Hex color DEC1A4 by changing the saturation by 10% instead.

 DEC1A4

 DEC1A4

FFFFFF


 C2A68A

 FFF9DB

 A68C70

 FFFFF8

 8B7258

 715A40

 58422A

 402C15

 2A1700

 0D0000

 000000

 DEC1A4

 DEC1A4

 DEB68E

 DECCBA

 DEAB78

 DED7D0

 DEA061

 DEE2E7

 DE954B

 DEEDFD

 DE8935

 DEF9FF

 DE7E1F

 DEFFFF

 DE7309

 DE6F00

Harmonies

Analogous

The Analogous color harmony consists of three colors that are next to each other on the color wheel.



E9BCAE



DEC1A4



CCC7A3

Triad

The Triadic color harmony groups three colors that are evenly spaced from another and form a triangle on the color wheel.



DEC1A4



98D0CD



D2BFE1

Complementary

The Complementary color scheme is a pair of colors which are on the opposite of each other on the color wheel.



DEC1A4



A4C1DE

Split Complementary

Split-complementary colors differ from the complementary color scheme. The scheme consists of three colors, the original color and two neighbors of the complement color.



BBC5E9



DEC1A4



97CFDD

Square

The Square scheme is like the rectangle color scheme, but the four colors are evenly spaced on the color wheel.



DEC1A4



A4CFBA



A5CBE8



E3BAD1

Rectangle

The Rectangle color scheme consists of four colors that form a rectangle on the color wheel.



DEC1A4



BFCBA7



A5CBE8



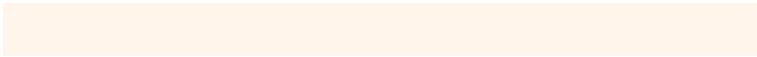
CBC1E4

Sweetspot

The Sweet Spot groups the original color and five complimentary colors.



DEC1A4



FFF5EB



DEA4C1



807973



000000



808080

Same Dimension

The Same Dimension uses a secret algorithm to generate beautiful new colors.



DEC1A4



FFD7B0



DEDDA4



706B65



B05800



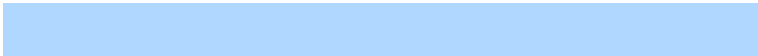
301800

Inverse Universe

The Inverse Universe completely reimagines the original color for something new.



A4C1DE



B0D7FF



A4A4DE



656B70



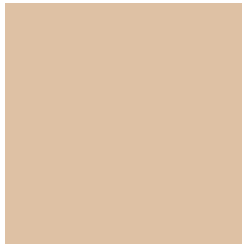
0058B0



001830

Previews

White Background



This preview shows how the Hex color DEC1A4 looks on a white background.

Color Contrast Check

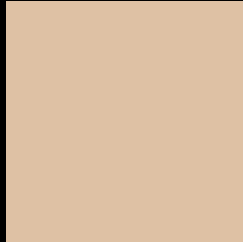
Large Text (above 18pt) WCAG AA × Fail

Any Text WCAG AA × Fail

Large Text (above 18pt) WCAG AAA × Fail

Any Text WCAG AAA × Fail

Black Background



This preview shows how the Hex color DEC1A4 looks on a black background.

Color Contrast Check

Large Text (above 18pt) WCAG AA ✓ Pass

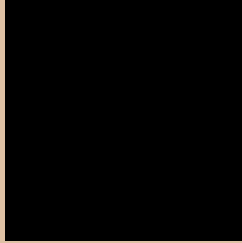
Any Text WCAG AA ✓ Pass

Large Text (above 18pt) WCAG AAA ✓ Pass

Any Text WCAG AAA ✓ Pass

If you want to check with other color combinations, try the [Color Contrast Checker](#).

Hex DEC1A4 Background



This preview shows how black text looks on a background with the Hex color DEC1A4.

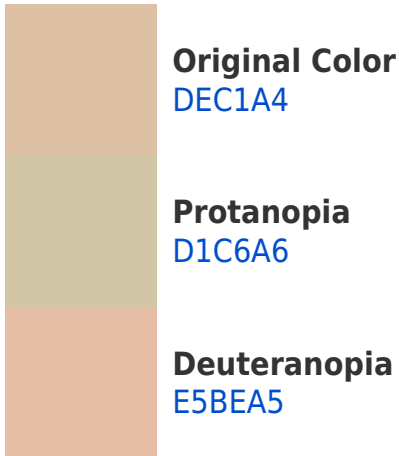


This preview shows how white text looks on a background with the Hex color DEC1A4.

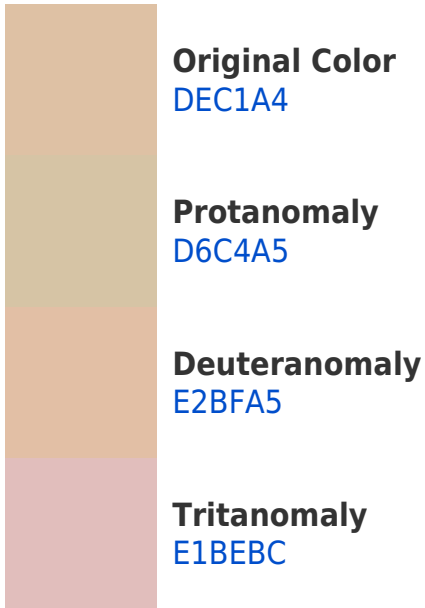
Color Blindness Simulation

Color vision deficiency is a very complex topic, and I could not describe the different causes any better than Wikipedia does, so if you want to learn more, you should check out their [article about color blindness](#).

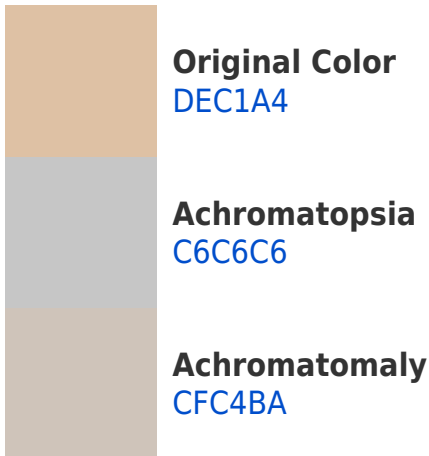
Dichromacy



Trichromacy



Monochromacy



CSS Examples

Text

The CSS property to change the color of the text to Hex DEC1A4 is called "color". The color property can be set on classes, ids or directly on the HTML element.

This example shows how text in the color #DEC1A4 looks like.

```
.text, #text, p{  
    color:#DEC1A4  
}
```

If you want to add a text shadow in that color use the text-shadow property, you can generate a text shadow directly with our [CSS Text Shadow Generator](#).

Here you see how black text with a 4 pixel #DEC1A4 colored shadow looks like.

```
.shadow{ text-shadow: 4px 4px 2px #DEC1A4
}
```

Border

The CSS property to change the border of an element to Hex DEC1A4 is called "border". The border property can be set on classes, ids or directly on the HTML element.

This example shows the color as border, it can be applied via the CSS property "border" or "border-color".

```
.border, #border, table{ border:4px solid
#DEC1A4 }
```

If only the border color should be changed use the property `border-color`.

```
.border{ border-color:#DEC1A4 }
```

If you want to add a box shadow in that color use:

Here you see how a box with a 4 pixel #DEC1A4 colored shadow looks like.

```
.boxshadow{ -moz-box-shadow:4px 4px 4px  
4px #DEC1A4; -webkit-box-shadow:4px 4px  
4px 4px #DEC1A4; box-shadow:4px 4px 4px  
4px #DEC1A4 }
```

Background

The CSS property to change the background color of an element to Hex DEC1A4 is called "background". The background property can be set on classes, ids or directly on the HTML element.

```
.background, #background, body{  
background:#DEC1A4 }
```

If only the background color should be changed can be used:

```
.background{ background-color:#DEC1A4 }
```

This example shows the color as background, it is applied via the CSS property "background".

To optimize and compress your CSS code, you can use our [online CSS compressor and optimizer](#) based on csstidy. If you want to create a linear or radial gradient as background or border, check our [CSS Gradient Generator](#).

Hey! You found this booklet interesting? Support Converting Colors with the new Membership Option!

The pro membership hides all ads, plus gives you double the colors in the color bucket, and more awesome pro features!

[Learn more, Memberships starting at \\$2.50/m!](#)

**Follow me
on Twitter!**

@ConvertingColor