

Converting Colors

Hex(DEC1B8)

Have a look what the booklet for
Hex(DEC1B8) contains.

Hex(DEC1B8)	3
<i>Conversions</i>	4
<i>Details</i>	6
<i>Harmonies</i>	11
<i>Previews</i>	23
<i>Color Blindness Simulation</i>	26
<i>CSS Examples</i>	29

Color

Hex(DEC1B8)

Conversions

Conversions Part 1

Format	Color
Hex	DEC1B8
RGB	222, 193, 184
RGB Percent	87%, 76%, 72%
CMY	0.1294, 0.2431, 0.2784
CMYK	0.00, 0.13, 0.17, 0.13
HSL	14°, 37%, 80%
HSV	14°, 17%, 87%
XYZ	57.8459, 57.1302, 53.3258
YIQ	200.6450, 20.1730, 3.3490

Conversions

Conversions Part 2

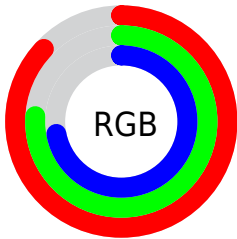
Format	Color
R _Y B	222, 196, 184
Decimal	14598584
CIE Lab	80.25, 8.84, 8.30
CIE LCh	80, 12.129, 43.213
Yxy	57.1302, 0.3437, 0.3395
Android (android.graphics.Color)	4292788664 (0xFFDEC1B8)
YUV	200.6450, -8.2060, 18.7283
Hunter-Lab	75.5845, 4.3356, 11.0793

Details

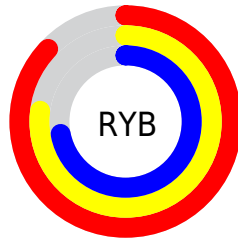
The Hex color **DEC1B8** is a light color, and the websafe version is hex **FFCCCC**. A complement of this color would be **B8D5DE**, and the grayscale version is **C9C9C9**.

A 20% lighter version of the original color is **FFF9F0**, and **A78B83** is the 20% darker color. If you saturate the color by 10%, you get **DEB0A2**, and if you desaturate by 10%, it is **DED2CE**.

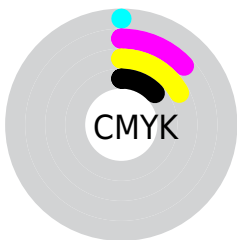
Distribution



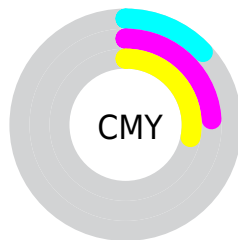
- Red (87%)
- Green (76%)
- Blue (72%)



- Red (87%)
- Yellow (77%)
- Blue (72%)



- Cyan (0%)
- Magenta (13%)
- Yellow (17%)
- Black (13%)



- Cyan (13%)
- Magenta (24%)
- Yellow (28%)

Brightness & Saturation Gradients

These gradients show how the Hex color DEC1B8 changes by changing the brightness by 10 percent. The first figure shows a shift by +10% for each color and the second figure -10%.

Similar to the brightness gradients but the following saturation gradients show a change of the Hex color DEC1B8 by changing the saturation by 10% instead.

 DEC1B8

FFFFFF

 FFF9F0

 DEC1B8

 C2A69D

 A78B83

 8C726A

 725952

 59423B

 412C25

 2B1710

 150000

 000000

 DEC1B8

 DEC1B8

 DEB0A2

 DED2CE

 DE9F8C

 DEE3E4

 DE8E75

 DEF4FB

 DE7D5F

 DEFFFF

 DE6C49

 DE5B33

 DE4A1D

 DE3906

 DE3500

Harmonies

Analogous

The Analogous color harmony consists of three colors that are next to each other on the color wheel.



DFBFC2



DEC1B8



D7C4B2

Triad

The Triadic color harmony groups three colors that are evenly spaced from another and form a triangle on the color wheel.



DEC1B8



B2CDC0



C1C6DD

Complementary

The Complementary color scheme is a pair of colors which are on the opposite of each other on the color wheel.



DEC1B8



B8D5DE

Split Complementary

Split-complementary colors differ from the complementary color scheme. The scheme consists of three colors, the original color and two neighbors of the complement color.



B4CADC



DEC1B8



ABCECC

Square

The Square scheme is like the rectangle color scheme, but the four colors are evenly spaced on the color wheel.



DEC1B8



BECBB6



ACCDD6



CFC3D8

Rectangle

The Rectangle color scheme consists of four colors that form a rectangle on the color wheel.



DEC1B8



CFC7B1



ACCDD6



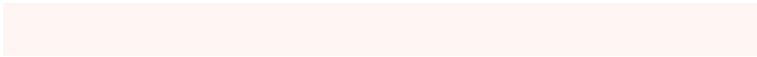
BDC8DD

Sweetspot

The Sweet Spot groups the original color and five complimentary colors.



DEC1B8



FFF5F2



DEB8D5



807A78



000000



808080

Same Dimension

The Same Dimension uses a secret algorithm to generate beautiful new colors.



DEC1B8



FFD6C9



DED4B8



706865



B02A00



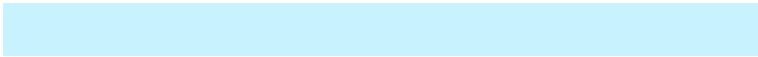
300B00

Inverse Universe

The Inverse Universe completely reimagines the original color for something new.



B8D5DE



C9F2FF



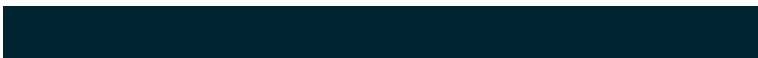
B8C2DE



656E70



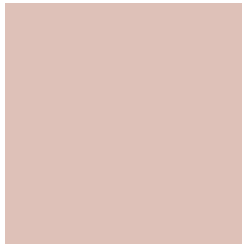
0086B0



002530

Previews

White Background



This preview shows how the Hex color DEC1B8 looks on a white background.

Color Contrast Check

Large Text (above 18pt) WCAG AA × Fail

Any Text WCAG AA × Fail

Large Text (above 18pt) WCAG AAA × Fail

Any Text WCAG AAA × Fail

Black Background



This preview shows how the Hex color DEC1B8 looks on a black background.

Color Contrast Check

Large Text (above 18pt) WCAG AA ✓ Pass

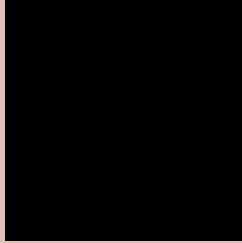
Any Text WCAG AA ✓ Pass

Large Text (above 18pt) WCAG AAA ✓ Pass

Any Text WCAG AAA ✓ Pass

If you want to check with other color combinations, try the [Color Contrast Checker](#).

Hex DEC1B8 Background



This preview shows how black text looks on a background with the Hex color DEC1B8.

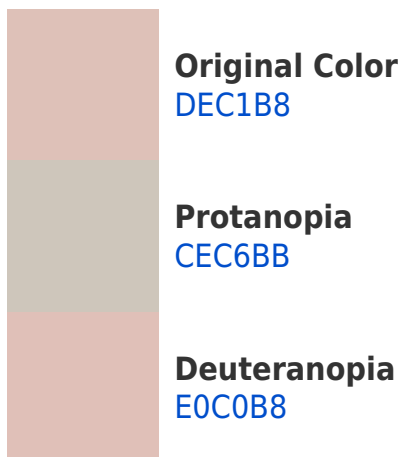


This preview shows how white text looks on a background with the Hex color DEC1B8.

Color Blindness Simulation

Color vision deficiency is a very complex topic, and I could not describe the different causes any better than Wikipedia does, so if you want to learn more, you should check out their [article about color blindness](#).

Dichromacy



Trichromacy



Original Color
DEC1B8

Protanomaly
D4C4BA

Deuteranomaly
DFC0B8

Tritanomaly
E0BFC5

Monochromacy



Original Color
DEC1B8

Achromatopsia
C9C9C9

Achromatomaly
D1C6C3

CSS Examples

Text

The CSS property to change the color of the text to Hex DEC1B8 is called "color". The color property can be set on classes, ids or directly on the HTML element.

This example shows how text in the color #DEC1B8 looks like.

```
.text, #text, p{  
    color:#DEC1B8  
}
```

If you want to add a text shadow in that color use the text-shadow property, you can generate a text shadow directly with our [CSS Text Shadow Generator](#).

Here you see how black text with a 4 pixel #DEC1B8 colored shadow looks like.

```
.shadow{ text-shadow: 4px 4px 2px #DEC1B8  
}
```

Border

The CSS property to change the border of an element to Hex DEC1B8 is called "border". The border property can be set on classes, ids or directly on the HTML element.

This example shows the color as border, it can be applied via the CSS property "border" or "border-color".

```
.border, #border, table{ border:4px solid  
#DEC1B8 }
```

If only the border color should be changed use the property `border-color`.

```
.border{ border-color:#DEC1B8 }
```

If you want to add a box shadow in that color use:

Here you see how a box with a 4 pixel #DEC1B8 colored shadow looks like.

```
.boxshadow{ -moz-box-shadow:4px 4px 4px  
4px #DEC1B8; -webkit-box-shadow:4px 4px  
4px 4px #DEC1B8; box-shadow:4px 4px 4px  
4px #DEC1B8 }
```

Background

The CSS property to change the background color of an element to Hex DEC1B8 is called "background". The background property can be set on classes, ids or directly on the HTML element.

```
.background, #background, body{  
background:#DEC1B8 }
```

If only the background color should be changed can be used:

```
.background{ background-color:#DEC1B8 }
```

This example shows the color as background, it is applied via the CSS property "background".

To optimize and compress your CSS code, you can use our [online CSS compressor and optimizer](#) based on csstidy. If you want to create a linear or radial gradient as background or border, check our [CSS Gradient Generator](#).

Hey! You found this booklet interesting? Support Converting Colors with the new Membership Option!

The pro membership hides all ads, plus gives you double the colors in the color bucket, and more awesome pro features!

[Learn more, Memberships starting at \\$2.50/m!](#)

**Follow me
on Twitter!**

@ConvertingColor