

Converting Colors

Hex(DEC4B3)

Have a look what the booklet for
Hex(DEC4B3) contains.

Hex(DEC4B3)	3
<i>Conversions</i>	4
<i>Details</i>	6
<i>Harmonies</i>	11
<i>Previews</i>	23
<i>Color Blindness Simulation</i>	26
<i>CSS Examples</i>	29

Color

Hex(DEC4B3)

Conversions

Conversions Part 1

Format	Color
Hex	DEC4B3
RGB	222, 196, 179
RGB Percent	87%, 77%, 70%
CMY	0.1294, 0.2314, 0.2980
CMYK	0.00, 0.12, 0.19, 0.13
HSL	24°, 39%, 79%
HSV	24°, 19%, 87%
XYZ	58.0008, 58.2641, 50.8370
YIQ	201.8360, 20.9530, 0.2250

Conversions

Conversions Part 2

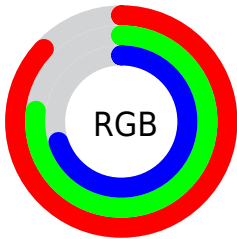
Format	Color
R_{YB}	222, 207, 179
Decimal	14599347
CIE _{Lab}	80.89, 6.49, 11.89
CIE _{LCh}	81, 13.544, 61.365
Y _{xy}	58.2641, 0.3471, 0.3487
Android (android.graphics.Color)	4292789427 (0xFFDEC4B3)
YUV	201.8360, -11.2581, 17.6838
Hunter-Lab	76.3309, 2.0558, 13.9441

Details

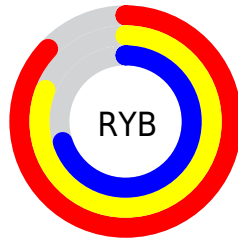
The Hex color **DEC4B3** is a light color, and the websafe version is hex **CCCCCC**. A complement of this color would be **B3CDDE**, and the grayscale version is **CACACA**.

A 20% lighter version of the original color is **FFFDEB**, and **A68E7E** is the 20% darker color. If you saturate the color by 10%, you get **DEB79D**, and if you desaturate by 10%, it is **DED1C9**.

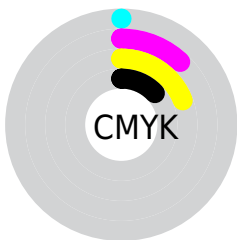
Distribution



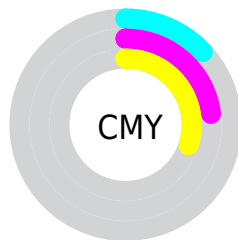
- Red (87%)
- Green (77%)
- Blue (70%)



- Red (87%)
- Yellow (81%)
- Blue (70%)



- Cyan (0%)
- Magenta (12%)
- Yellow (19%)
- Black (13%)



- Cyan (13%)
- Magenta (23%)
- Yellow (30%)

Brightness & Saturation Gradients

These gradients show how the Hex color DEC4B3 changes by changing the brightness by 10 percent. The first figure shows a shift by +10% for each color and the second figure -10%.

Similar to the brightness gradients but the following saturation gradients show a change of the Hex color DEC4B3 by changing the saturation by 10% instead.

 DEC4B3

FFFFFF

 FFFDEB

 DEC4B3

 C2A998

 A68E7E

 8C7565

 725C4D

 594536

 412E21

 2A1A0B

 130000

 000000

 DEC4B3

 DEC4B3

 DEB79D

 DED1C9

 DEA987

 DEDFDF

 DE9C70

 DEECF6

 DE8E5A

 DEFAFF

 DE8144

 DEFFFF

 DE732E

 DE6618

 DE5901

 DE5800

Harmonies

Analogous

The Analogous color harmony consists of three colors that are next to each other on the color wheel.



E4C1BC



DEC4B3



D3C8B0

Triad

The Triadic color harmony groups three colors that are evenly spaced from another and form a triangle on the color wheel.



DEC4B3



ACD0C9



CCC5DE

Complementary

The Complementary color scheme is a pair of colors which are on the opposite of each other on the color wheel.



DEC4B3



B3CDDE

Split Complementary

Split-complementary colors differ from the complementary color scheme. The scheme consists of three colors, the original color and two neighbors of the complement color.



BCCA E2



DEC4 B3



A9D0 D5

Square

The Square scheme is like the rectangle color scheme, but the four colors are evenly spaced on the color wheel.



DEC4B3



B6CFBC



AFCDDF



DAC2D5

Rectangle

The Rectangle color scheme consists of four colors that form a rectangle on the color wheel.



DEC4B3



C9CBB1



AFCDDF



C7C7E0

Sweetspot

The Sweet Spot groups the original color and five complimentary colors.



DEC4B3



FFF6F0



DEB3CE



807A77



000000



808080

Same Dimension

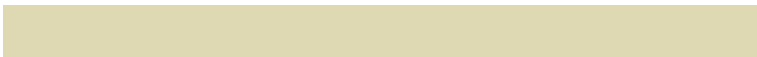
The Same Dimension uses a secret algorithm to generate beautiful new colors.



DEC4B3



FFDCC4



DED9B3



706965



B04600



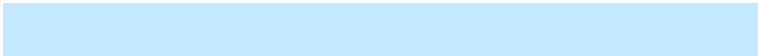
301300

Inverse Universe

The Inverse Universe completely reimagines the original color for something new.



B3CDDE



C4E8FF



B3B8DE



656C70



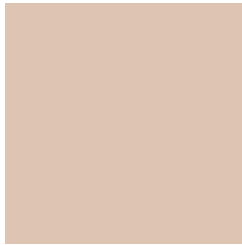
006AB0



001D30

Previews

White Background



This preview shows how the Hex color DEC4B3 looks on a white background.

Color Contrast Check

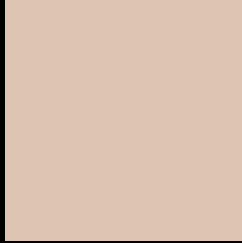
Large Text (above 18pt) WCAG AA × Fail

Any Text WCAG AA × Fail

Large Text (above 18pt) WCAG AAA × Fail

Any Text WCAG AAA × Fail

Black Background



This preview shows how the Hex color DEC4B3 looks on a black background.

Color Contrast Check

Large Text (above 18pt) WCAG AA ✓ Pass

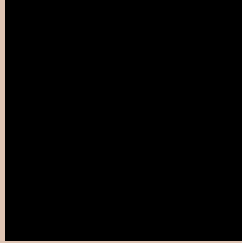
Any Text WCAG AA ✓ Pass

Large Text (above 18pt) WCAG AAA ✓ Pass

Any Text WCAG AAA ✓ Pass

If you want to check with other color combinations, try the [Color Contrast Checker](#).

Hex DEC4B3 Background



This preview shows how black text looks on a background with the Hex color DEC4B3.

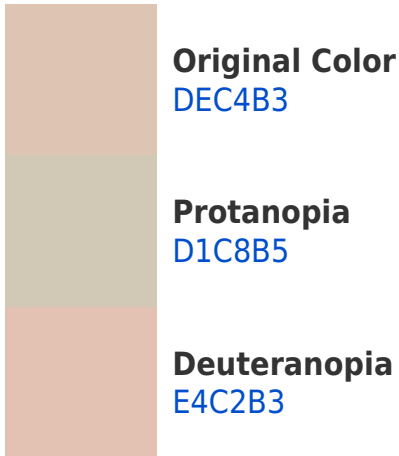


This preview shows how white text looks on a background with the Hex color DEC4B3.

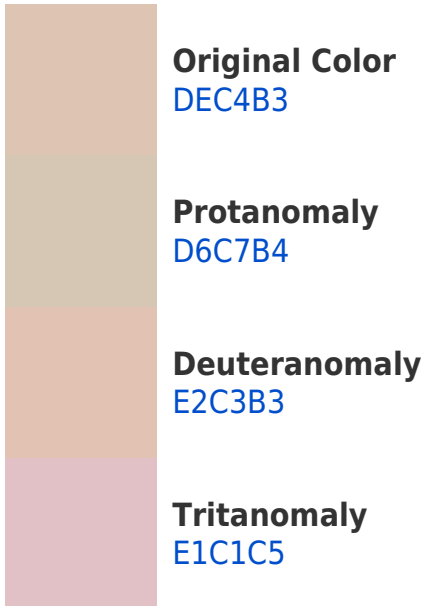
Color Blindness Simulation

Color vision deficiency is a very complex topic, and I could not describe the different causes any better than Wikipedia does, so if you want to learn more, you should check out their [article about color blindness](#).

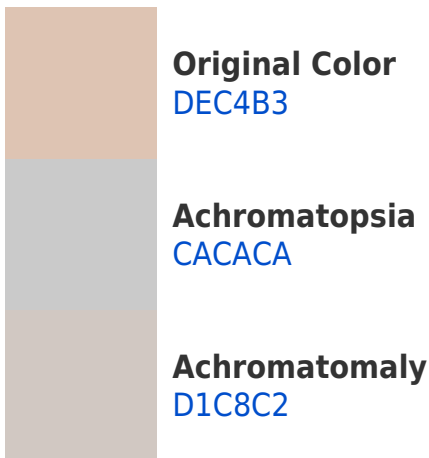
Dichromacy



Trichromacy



Monochromacy



CSS Examples

Text

The CSS property to change the color of the text to Hex DEC4B3 is called "color". The color property can be set on classes, ids or directly on the HTML element.

This example shows how text in the color #DEC4B3 looks like.

```
.text, #text, p{  
    color:#DEC4B3  
}
```

If you want to add a text shadow in that color use the text-shadow property, you can generate a text shadow directly with our [CSS Text Shadow Generator](#).

Here you see how black text with a 4 pixel #DEC4B3 colored shadow looks like.

```
.shadow{ text-shadow: 4px 4px 2px #DEC4B3
}
```

Border

The CSS property to change the border of an element to Hex DEC4B3 is called "border". The border property can be set on classes, ids or directly on the HTML element.

This example shows the color as border, it can be applied via the CSS property "border" or "border-color".

```
.border, #border, table{ border:4px solid
#DEC4B3 }
```

If only the border color should be changed use the property `border-color`.

```
.border{ border-color:#DEC4B3 }
```

If you want to add a box shadow in that color use:

Here you see how a box with a 4 pixel #DEC4B3 colored shadow looks like.

```
.boxshadow{ -moz-box-shadow:4px 4px 4px  
4px #DEC4B3; -webkit-box-shadow:4px 4px  
4px 4px #DEC4B3; box-shadow:4px 4px 4px  
4px #DEC4B3 }
```

Background

The CSS property to change the background color of an element to Hex DEC4B3 is called "background". The background property can be set on classes, ids or directly on the HTML element.

```
.background, #background, body{  
background:#DEC4B3 }
```

If only the background color should be changed can be used:

```
.background{ background-color:#DEC4B3 }
```

This example shows the color as background, it is applied via the CSS property "background".

To optimize and compress your CSS code, you can use our [online CSS compressor and optimizer](#) based on csstidy. If you want to create a linear or radial gradient as background or border, check our [CSS Gradient Generator](#).

Hey! You found this booklet interesting? Support Converting Colors with the new Membership Option!

The pro membership hides all ads, plus gives you double the colors in the color bucket, and more awesome pro features!

[Learn more, Memberships starting at \\$2.50/m!](#)

**Follow me
on Twitter!**

@ConvertingColor