

# Converting Colors

Hex(DEC4B9)

Have a look what the booklet for  
Hex(DEC4B9) contains.

<b>Hex(DEC4B9)</b> .....	3
<i><b>Conversions</b></i> .....	4
<i><b>Details</b></i> .....	6
<i><b>Harmonies</b></i> .....	11
<i><b>Previews</b></i> .....	23
<i><b>Color Blindness Simulation</b></i> .....	26
<i><b>CSS Examples</b></i> .....	29

# **Color**

**Hex(DEC4B9)**

# Conversions

## Conversions Part 1

Format	Color
Hex	DEC4B9
RGB	222, 196, 185
RGB Percent	87%, 77%, 73%
CMY	0.1294, 0.2314, 0.2745
CMYK	0.00, 0.12, 0.17, 0.13
HSL	18°, 36%, 80%
HSV	18°, 17%, 87%
XYZ	58.6211, 58.5122, 54.1033
YIQ	202.5200, 19.0270, 2.0910

# Conversions

## Conversions Part 2

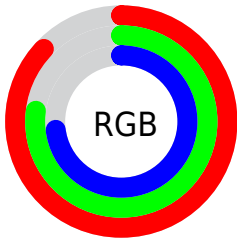
<b>Format</b>	<b>Color</b>
R <sub>Y</sub> B	222, 201, 185
Decimal	14599353
CIE Lab	81.02, 7.41, 8.87
CIE LCh	81, 11.555, 50.142
Yxy	58.5122, 0.3423, 0.3417
Android (android.graphics.Color)	4292789433 (0xFFDEC4B9)
YUV	202.5200, -8.6374, 17.0840
Hunter-Lab	76.4933, 2.9313, 11.6098

# Details

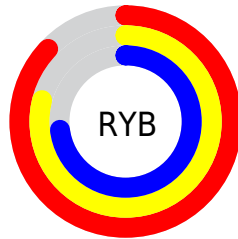
The Hex color **DEC4B9** is a light color, and the websafe version is hex **CCCCCC**. A complement of this color would be **B9D3DE**, and the grayscale version is **CBCBCB**.

A 20% lighter version of the original color is **FFFDF1**, and **A78E84** is the 20% darker color. If you saturate the color by 10%, you get **DEB4A3**, and if you desaturate by 10%, it is **DED4CF**.

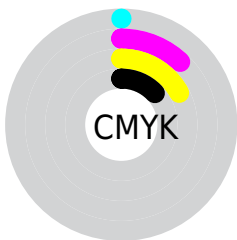
# Distribution



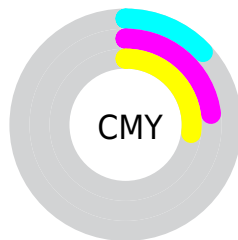
- Red (87%)
- Green (77%)
- Blue (73%)



- Red (87%)
- Yellow (79%)
- Blue (73%)



- Cyan (0%)
- Magenta (12%)
- Yellow (17%)
- Black (13%)



- Cyan (13%)
- Magenta (23%)
- Yellow (27%)

# Brightness & Saturation Gradients

These gradients show how the Hex color DEC4B9 changes by changing the brightness by 10 percent. The first figure shows a shift by +10% for each color and the second figure -10%.

Similar to the brightness gradients but the following saturation gradients show a change of the Hex color DEC4B9 by changing the saturation by 10% instead.



 DEC4B9

 DEC4B9

FFFFFF

 C2A99E

 FFFDF1

 A78E84

 8C756B

 725C53

 59453C

 412E26

 2B1911

 150000

 000000

 DEC4B9

 DEC4B9

 DEB4A3

 DED4CF

 DEA58D

 DEE3E5

 DE9576

 DEF3FC

 DE8660

 DEFFFF

 DE764A

 DE6634

 DE571E

 DE4707

 DE4200

# Harmonies

## Analogous

The Analogous color harmony consists of three colors that are next to each other on the color wheel.



E1C2C2



DEC4B9



D6C7B4

# Triad

The Triadic color harmony groups three colors that are evenly spaced from another and form a triangle on the color wheel.



DEC4B9



B3CFC5



C7C8DD

# Complementary

The Complementary color scheme is a pair of colors which are on the opposite of each other on the color wheel.



DEC4B9



B9D3DE

# Split Complementary

Split-complementary colors differ from the complementary color scheme. The scheme consists of three colors, the original color and two neighbors of the complement color.



BACBDE



DEC4B9



AED0D0

# Square

The Square scheme is like the rectangle color scheme, but the four colors are evenly spaced on the color wheel.



DEC4B9



BECEBB



B1CED9



D4C4D7

# Rectangle

The Rectangle color scheme consists of four colors that form a rectangle on the color wheel.



DEC4B9



CECAB4



B1CED9



C2C9DE



# Sweetspot

The Sweet Spot groups the original color and five complimentary colors.



DEC4B9



FFF6F2



DEB9D4



807A78



000000



808080

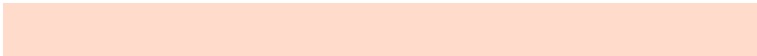


# Same Dimension

The Same Dimension uses a secret algorithm to generate beautiful new colors.



DEC4B9



FFDBCC



DED6B9



706865



B03400



300E00

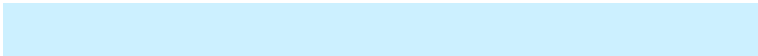


# Inverse Universe

The Inverse Universe completely reimagines the original color for something new.



B9D3DE



CCF0FF



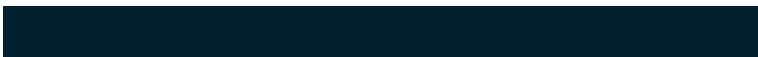
B9C1DE



656D70



007CB0

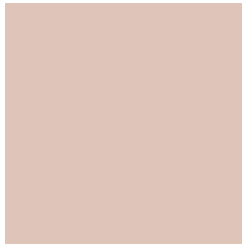


002230



# Previews

## White Background



This preview shows how the Hex color DEC4B9 looks on a white background.

## Color Contrast Check

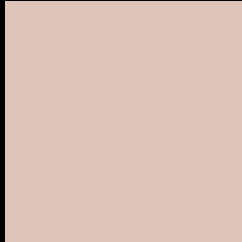
Large Text (above 18pt) WCAG AA × Fail

Any Text WCAG AA × Fail

Large Text (above 18pt) WCAG AAA × Fail

Any Text WCAG AAA × Fail

# Black Background



This preview shows how the Hex color DEC4B9 looks on a black background.

## Color Contrast Check

Large Text (above 18pt) WCAG AA ✓ Pass

Any Text WCAG AA ✓ Pass

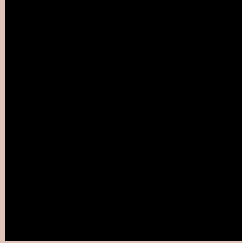
Large Text (above 18pt) WCAG AAA ✓ Pass

Any Text WCAG AAA ✓ Pass

If you want to check with other color combinations, try the [Color Contrast Checker](#).



## Hex DEC4B9 Background



This preview shows how black text looks on a background with the Hex color DEC4B9.

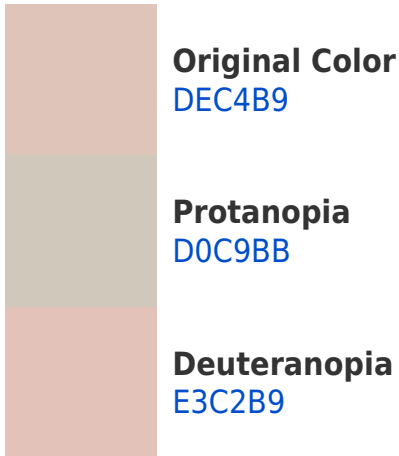


This preview shows how white text looks on a background with the Hex color DEC4B9.

# Color Blindness Simulation

Color vision deficiency is a very complex topic, and I could not describe the different causes any better than Wikipedia does, so if you want to learn more, you should check out their [article about color blindness](#).

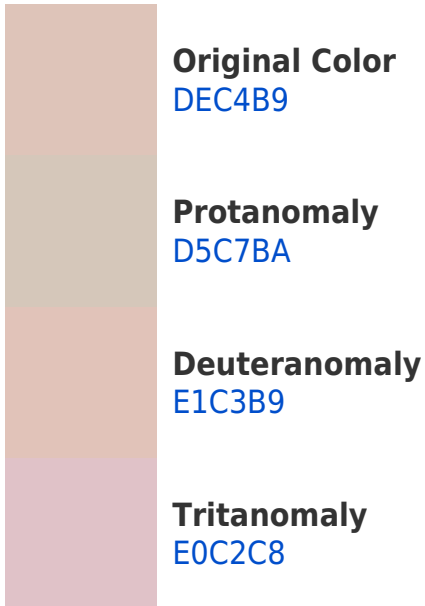
## Dichromacy



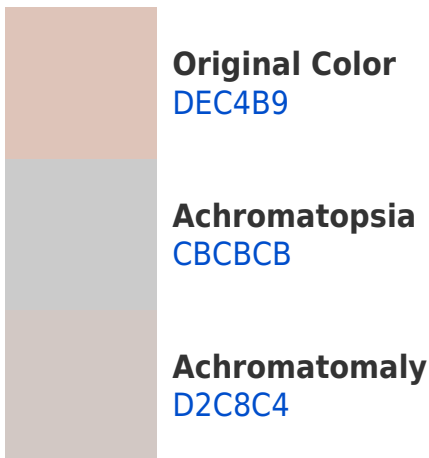


**Tritanopia**  
E1C1D0

# Trichromacy



# Monochromacy



# CSS Examples

## Text

The CSS property to change the color of the text to Hex DEC4B9 is called "color". The color property can be set on classes, ids or directly on the HTML element.

This example shows how text in the color #DEC4B9 looks like.

```
.text, #text, p{  
    color:#DEC4B9  
}
```

If you want to add a text shadow in that color use the text-shadow property, you can generate a text shadow directly with our [CSS Text Shadow Generator](#).

Here you see how black text with a 4 pixel #DEC4B9 colored shadow looks like.

```
.shadow{ text-shadow: 4px 4px 2px #DEC4B9  
}
```

## Border

The CSS property to change the border of an element to Hex DEC4B9 is called "border". The border property can be set on classes, ids or directly on the HTML element.

This example shows the color as border, it can be applied via the CSS property "border" or "border-color".

```
.border, #border, table{ border:4px solid  
#DEC4B9 }
```

If only the border color should be changed use the property `border-color`.

```
.border{ border-color:#DEC4B9 }
```

If you want to add a box shadow in that color use:

Here you see how a box with a 4 pixel #DEC4B9 colored shadow looks like.

```
.boxshadow{ -moz-box-shadow:4px 4px 4px  
4px #DEC4B9; -webkit-box-shadow:4px 4px  
4px 4px #DEC4B9; box-shadow:4px 4px 4px  
4px #DEC4B9 }
```

# Background

The CSS property to change the background color of an element to Hex DEC4B9 is called "background". The background property can be set on classes, ids or directly on the HTML element.

```
.background, #background, body{  
background:#DEC4B9 }
```

If only the background color should be changed can be used:

```
.background{ background-color:#DEC4B9 }
```

This example shows the color as background, it is applied via the CSS property "background".

To optimize and compress your CSS code, you can use our [online CSS compressor and optimizer](#) based on csstidy. If you want to create a linear or radial gradient as background or border, check our [CSS Gradient Generator](#).



Hey! You found this booklet interesting? Support Converting Colors with the new Membership Option!

The pro membership hides all ads, plus gives you double the colors in the color bucket, and more awesome pro features!

**[Learn more, Memberships starting at \\$2.50/m!](#)**

**Follow me  
on Twitter!**

@ConvertingColor