

Converting Colors

Hex(DEC4C3)

Have a look what the booklet for
Hex(DEC4C3) contains.

Hex(DEC4C3)	3
<i>Conversions</i>	4
<i>Details</i>	6
<i>Harmonies</i>	11
<i>Previews</i>	23
<i>Color Blindness Simulation</i>	26
<i>CSS Examples</i>	29

Color

Hex(DEC4C3)

Conversions

Conversions Part 1

Format	Color
Hex	DEC4C3
RGB	222, 196, 195
RGB Percent	87%, 77%, 76%
CMY	0.1294, 0.2314, 0.2353
CMYK	0.00, 0.12, 0.12, 0.13
HSL	2°, 29%, 82%
HSV	2°, 12%, 87%
XYZ	59.7145, 58.9496, 59.8609
YIQ	203.6600, 15.8170, 5.2010

Conversions

Conversions Part 2

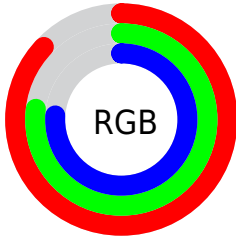
Format	Color
R_{YB}	222, 196, 195
Decimal	14599363
CIE _{Lab}	81.26, 9.00, 3.85
CIE _{LCh}	81, 9.787, 23.195
Yxy	58.9496, 0.3345, 0.3302
Android (android.graphics.Color)	4292789443 (0xFFDEC4C3)
YUV	203.6600, -4.2694, 16.0842
Hunter-Lab	76.7786, 4.4655, 7.5193

Details

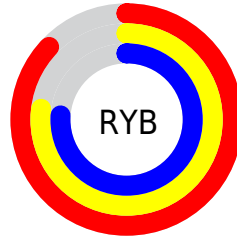
The Hex color **DEC4C3** is a light color, and the websafe version is hex **CCCCCC**. A complement of this color would be **C3DDDE**, and the grayscale version is **CCCCCC**.

A 20% lighter version of the original color is **FFFDFC**, and **A78E8D** is the 20% darker color. If you saturate the color by 10%, you get **DEAFAD**, and if you desaturate by 10%, it is **DED9D9**.

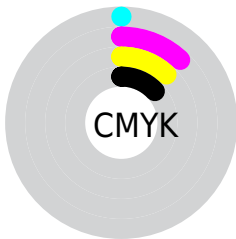
Distribution



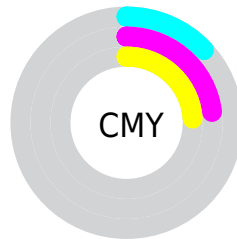
- Red (87%)
- Green (77%)
- Blue (76%)



- Red (87%)
- Yellow (77%)
- Blue (76%)



- Cyan (0%)
- Magenta (12%)
- Yellow (12%)
- Black (13%)



- Cyan (13%)
- Magenta (23%)
- Yellow (24%)

Brightness & Saturation Gradients

These gradients show how the Hex color DEC4C3 changes by changing the brightness by 10 percent. The first figure shows a shift by +10% for each color and the second figure -10%.

Similar to the brightness gradients but the following saturation gradients show a change of the Hex color DEC4C3 by changing the saturation by 10% instead.

 DEC4C3

 DEC4C3

FFFFFF

 C2A9A8

 FFFDFC

 A78E8D

 8C7574

 725C5B

 5A4444

 422E2E

 2B1919

 180000

 000000

 DEC4C3

 DEC4C3

 DEAFAD

 DED9D9

 DE9997

 DEEFEF

 DE8480

 DEFFFF

 DE6E6A

 DE5954

 DE443E

 DE2E28

 DE1911

 DE0800

Harmonies

Analogous

The Analogous color harmony consists of three colors that are next to each other on the color wheel.



DBC4CC



DEC4C3



DBC6BC

Triad

The Triadic color harmony groups three colors that are evenly spaced from another and form a triangle on the color wheel.



DEC4C3



BFCEBF



BECBDC

Complementary

The Complementary color scheme is a pair of colors which are on the opposite of each other on the color wheel.



DEC4C3



C3DDDE

Split Complementary

Split-complementary colors differ from the complementary color scheme. The scheme consists of three colors, the original color and two neighbors of the complement color.



B6CED8



DEC4C3



B7CFC7

Square

The Square scheme is like the rectangle color scheme, but the four colors are evenly spaced on the color wheel.



DEC4C3



CACBB9



B3CFD1



C9C8DB

Rectangle

The Rectangle color scheme consists of four colors that form a rectangle on the color wheel.



DEC4C3



D7C7B9



B3CFD1



BBCCDB

Sweetspot

The Sweet Spot groups the original color and five complimentary colors.



DEC4C3



FFF5F5



DEC3DD



807979



000000



808080

Same Dimension

The Same Dimension uses a secret algorithm to generate beautiful new colors.



DEC4C3



FFDAD9



DED1C3



706565



B00700



300200

Inverse Universe

The Inverse Universe completely reimagines the original color for something new.



C3DDDE



D9FEFF



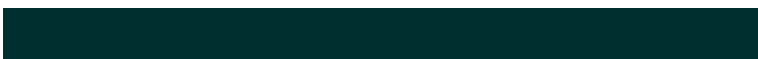
C3D0DE



657070



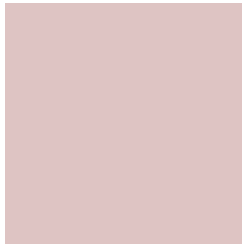
00A9B0



002F30

Previews

White Background



This preview shows how the Hex color DEC4C3 looks on a white background.

Color Contrast Check

Large Text (above 18pt) WCAG AA × Fail

Any Text WCAG AA × Fail

Large Text (above 18pt) WCAG AAA × Fail

Any Text WCAG AAA × Fail

Black Background



This preview shows how the Hex color DEC4C3 looks on a black background.

Color Contrast Check

Large Text (above 18pt) WCAG AA ✓ Pass

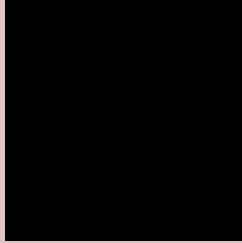
Any Text WCAG AA ✓ Pass

Large Text (above 18pt) WCAG AAA ✓ Pass

Any Text WCAG AAA ✓ Pass

If you want to check with other color combinations, try the [Color Contrast Checker](#).

Hex DEC4C3 Background



This preview shows how black text looks on a background with the Hex color DEC4C3.



This preview shows how white text looks on a background with the Hex color DEC4C3.

Color Blindness Simulation

Color vision deficiency is a very complex topic, and I could not describe the different causes any better than Wikipedia does, so if you want to learn more, you should check out their [article about color blindness](#).

Dichromacy



Original Color
DEC4C3

Protanopia
CEC9C6

Deuteranopia
E0C3C3



Tritanopia
E0C2D1

Trichromacy



Original Color
DEC4C3

Protanomaly
D4C7C5

Deuteranomaly
DFC3C3

Tritanomaly
DFC3CC

Monochromacy



Original Color
DEC4C3

Achromatopsia
CCCCCC

Achromatomaly
D3C9C9

CSS Examples

Text

The CSS property to change the color of the text to Hex DEC4C3 is called "color". The color property can be set on classes, ids or directly on the HTML element.

This example shows how text in the color #DEC4C3 looks like.

```
.text, #text, p{  
    color:#DEC4C3  
}
```

If you want to add a text shadow in that color use the text-shadow property, you can generate a text shadow directly with our [CSS Text Shadow Generator](#).

Here you see how black text with a 4 pixel #DEC4C3 colored shadow looks like.

```
.shadow{ text-shadow: 4px 4px 2px #DEC4C3
}
```

Border

The CSS property to change the border of an element to Hex DEC4C3 is called "border". The border property can be set on classes, ids or directly on the HTML element.

This example shows the color as border, it can be applied via the CSS property "border" or "border-color".

```
.border, #border, table{ border:4px solid
#DEC4C3 }
```

If only the border color should be changed use the property `border-color`.

```
.border{ border-color:#DEC4C3 }
```

If you want to add a box shadow in that color use:

Here you see how a box with a 4 pixel #DEC4C3 colored shadow looks like.

```
.boxshadow{ -moz-box-shadow:4px 4px 4px  
4px #DEC4C3; -webkit-box-shadow:4px 4px  
4px 4px #DEC4C3; box-shadow:4px 4px 4px  
4px #DEC4C3 }
```

Background

The CSS property to change the background color of an element to Hex DEC4C3 is called "background". The background property can be set on classes, ids or directly on the HTML element.

```
.background, #background, body{  
background:#DEC4C3 }
```

If only the background color should be changed can be used:

```
.background{ background-color:#DEC4C3 }
```

This example shows the color as background, it is applied via the CSS property "background".

To optimize and compress your CSS code, you can use our [online CSS compressor and optimizer](#) based on csstidy. If you want to create a linear or radial gradient as background or border, check our [CSS Gradient Generator](#).

Hey! You found this booklet interesting? Support Converting Colors with the new Membership Option!

The pro membership hides all ads, plus gives you double the colors in the color bucket, and more awesome pro features!

[Learn more, Memberships starting at \\$2.50/m!](#)

**Follow me
on Twitter!**

@ConvertingColor