

Converting Colors

Hex(DEC4CC)

Have a look what the booklet for
Hex(DEC4CC) contains.

Hex(DEC4CC)	3
<i>Conversions</i>	4
<i>Details</i>	6
<i>Harmonies</i>	11
<i>Previews</i>	23
<i>Color Blindness Simulation</i>	26
<i>CSS Examples</i>	29

Color

Hex(DEC4CC)

Conversions

Conversions Part 1

Format	Color
Hex	DEC4CC
RGB	222, 196, 204
RGB Percent	87%, 77%, 80%
CMY	0.1294, 0.2314, 0.2000
CMYK	0.00, 0.12, 0.08, 0.13
HSL	342°, 28%, 82%
HSV	342°, 12%, 87%
XYZ	60.7632, 59.3691, 65.3836
YIQ	204.6860, 12.9280, 8.0000

Conversions

Conversions Part 2

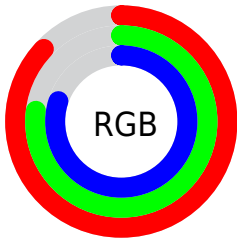
Format	Color
R _Y B	222, 196, 204
Decimal	14599372
CIE Lab	81.49, 10.50, -0.64
CIE LCh	81, 10.515, 356.513
Yxy	59.3691, 0.3275, 0.3200
Android (android.graphics.Color)	4292789452 (0xFFDEC4CC)
YUV	204.6860, -0.3382, 15.1844
Hunter-Lab	77.0513, 5.9265, 3.6241

Details

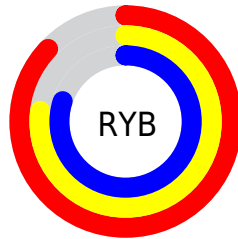
The Hex color **DEC4CC** is a light color, and the websafe version is hex **CCCCCC**. A complement of this color would be **C4DED6**, and the grayscale version is **CDCDCD**.

A 20% lighter version of the original color is **FFDFF**, and **A78E96** is the 20% darker color. If you saturate the color by 10%, you get **DEAEBD**, and if you desaturate by 10%, it is **DEDADB**.

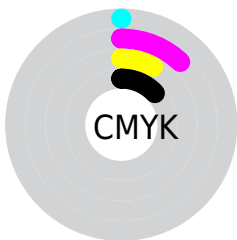
Distribution



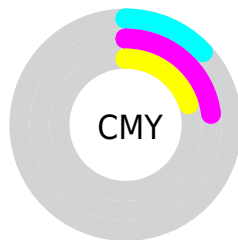
- Red (87%)
- Green (77%)
- Blue (80%)



- Red (87%)
- Yellow (77%)
- Blue (80%)



- Cyan (0%)
- Magenta (12%)
- Yellow (8%)
- Black (13%)



- Cyan (13%)
- Magenta (23%)
- Yellow (20%)

Brightness & Saturation Gradients

These gradients show how the Hex color DEC4CC changes by changing the brightness by 10 percent. The first figure shows a shift by +10% for each color and the second figure -10%.

Similar to the brightness gradients but the following saturation gradients show a change of the Hex color DEC4CC by changing the saturation by 10% instead.

 DEC4CC

 DEC4CC

FFFFFF

 C2A9B1

 FFFDFD

 A78E96

 8C757C

 735C63

 5A444B

 422E35

 2C1920

 190007

 000000

 DEC4CC

 DEC4CC

 DEAEBD

 DEDADB

 DE98AD

 DEF0EB

 DE819E

 DEFFFA

 DE6B8F

 DEFFFF

 DE557F

 DE3F70

 DE2960

 DE1251

 DE0044

Harmonies

Analogous

The Analogous color harmony consists of three colors that are next to each other on the color wheel.



D7C6D5



DEC4CC



E0C4C2

Triad

The Triadic color harmony groups three colors that are evenly spaced from another and form a triangle on the color wheel.



DEC4CC



C9CDB9



B6CEDB

Complementary

The Complementary color scheme is a pair of colors which are on the opposite of each other on the color wheel.



DEC4CC



C4DED6

Split Complementary

Split-complementary colors differ from the complementary color scheme. The scheme consists of three colors, the original color and two neighbors of the complement color.



B2D0D3



DEC4CC



BECFBF

Square

The Square scheme is like the rectangle color scheme, but the four colors are evenly spaced on the color wheel.



DEC4CC



D4C9B7



B5D0C9



BFCCDE

Rectangle

The Rectangle color scheme consists of four colors that form a rectangle on the color wheel.



DEC4CC



DEC5BD



B5D0C9



B4CFD8

Sweetspot

The Sweet Spot groups the original color and five complimentary colors.



DEC4CC



FFF5F8



D6C4DE



80797B



000000



808080

Same Dimension

The Same Dimension uses a secret algorithm to generate beautiful new colors.



DEC4CC



FFDBE6



DEC9C4



706568



B00036



30000F

Inverse Universe

The Inverse Universe completely reimagines the original color for something new.



DEC4CC



FFDBE6



C4D9DE



706568



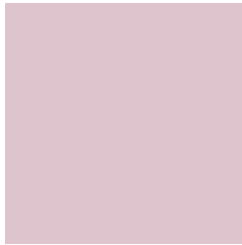
B00036



30000F

Previews

White Background



This preview shows how the Hex color DEC4CC looks on a white background.

Color Contrast Check

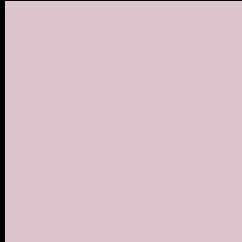
Large Text (above 18pt) WCAG AA × Fail

Any Text WCAG AA × Fail

Large Text (above 18pt) WCAG AAA × Fail

Any Text WCAG AAA × Fail

Black Background



This preview shows how the Hex color DEC4CC looks on a black background.

Color Contrast Check

Large Text (above 18pt) WCAG AA ✓ Pass

Any Text WCAG AA ✓ Pass

Large Text (above 18pt) WCAG AAA ✓ Pass

Any Text WCAG AAA ✓ Pass

If you want to check with other color combinations, try the [Color Contrast Checker](#).

Hex DEC4CC Background



This preview shows how black text looks on a background with the Hex color DEC4CC.



This preview shows how white text looks on a background with the Hex color DEC4CC.

Color Blindness Simulation

Color vision deficiency is a very complex topic, and I could not describe the different causes any better than Wikipedia does, so if you want to learn more, you should check out their [article about color blindness](#).

Dichromacy



Original Color
DEC4CC

Protanopia
CDCACF

Deuteranopia
DDC4CC



Tritanopia
DFC3D2

Trichromacy



Original Color
DEC4CC

Protanomaly
D3C8CE

Deuteranomaly
DDC4CC

Tritanomaly
DFC3D0

Monochromacy



Original Color
DEC4CC

Achromatopsia
CDCDCD

Achromatomaly
D3CACD

CSS Examples

Text

The CSS property to change the color of the text to Hex DEC4CC is called "color". The color property can be set on classes, ids or directly on the HTML element.

This example shows how text in the color #DEC4CC looks like.

```
.text, #text, p{  
    color:#DEC4CC  
}
```

If you want to add a text shadow in that color use the text-shadow property, you can generate a text shadow directly with our [CSS Text Shadow Generator](#).

Here you see how black text with a 4 pixel #DEC4CC colored shadow looks like.

```
.shadow{ text-shadow: 4px 4px 2px #DEC4CC  
}
```

Border

The CSS property to change the border of an element to Hex DEC4CC is called "border". The border property can be set on classes, ids or directly on the HTML element.

This example shows the color as border, it can be applied via the CSS property "border" or "border-color".

```
.border, #border, table{ border:4px solid  
#DEC4CC }
```

If only the border color should be changed use the property `border-color`.

```
.border{ border-color:#DEC4CC }
```

If you want to add a box shadow in that color use:

Here you see how a box with a 4 pixel #DEC4CC colored shadow looks like.

```
.boxshadow{ -moz-box-shadow:4px 4px 4px  
4px #DEC4CC; -webkit-box-shadow:4px 4px  
4px 4px #DEC4CC; box-shadow:4px 4px 4px  
4px #DEC4CC }
```

Background

The CSS property to change the background color of an element to Hex DEC4CC is called "background". The background property can be set on classes, ids or directly on the HTML element.

```
.background, #background, body{  
background:#DEC4CC }
```

If only the background color should be changed can be used:

```
.background{ background-color:#DEC4CC }
```

This example shows the color as background, it is applied via the CSS property "background".

To optimize and compress your CSS code, you can use our [online CSS compressor and optimizer](#) based on csstidy. If you want to create a linear or radial gradient as background or border, check our [CSS Gradient Generator](#).

Hey! You found this booklet interesting? Support Converting Colors with the new Membership Option!

The pro membership hides all ads, plus gives you double the colors in the color bucket, and more awesome pro features!

[Learn more, Memberships starting at \\$2.50/m!](#)

**Follow me
on Twitter!**

@ConvertingColor