

Converting Colors

Hex(DEC5CC)

Have a look what the booklet for
Hex(DEC5CC) contains.

Hex(DEC5CC)	3
<i>Conversions</i>	4
<i>Details</i>	6
<i>Harmonies</i>	11
<i>Previews</i>	23
<i>Color Blindness Simulation</i>	26
<i>CSS Examples</i>	29

Color

Hex(DEC5CC)

Conversions

Conversions Part 1

Format	Color
Hex	DEC5CC
RGB	222, 197, 204
RGB Percent	87%, 77%, 80%
CMY	0.1294, 0.2275, 0.2000
CMYK	0.00, 0.11, 0.08, 0.13
HSL	343°, 27%, 82%
HSV	343°, 11%, 87%
XYZ	60.9895, 59.8217, 65.4590
YIQ	205.2730, 12.6530, 7.4770

Conversions

Conversions Part 2

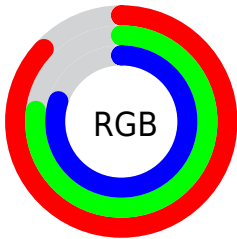
Format	Color
RYB	222, 197, 204
Decimal	14599628
CIELab	81.74, 9.96, -0.28
CIELCh	82, 9.969, 358.400
Yxy	59.8217, 0.3274, 0.3212
Android (android.graphics.Color)	4292789708 (0xFFDEC5CC)
YUV	205.2730, -0.6276, 14.6696
Hunter-Lab	77.3445, 5.4022, 3.9622

Details

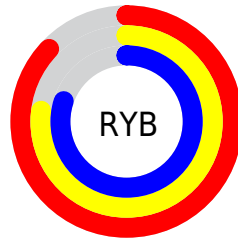
The Hex color **DEC5CC** is a light color, and the websafe version is hex **CCCCCC**. A complement of this color would be **C5DED7**, and the grayscale version is **CDCDCD**.

A 20% lighter version of the original color is **FFFEFF**, and **A78F96** is the 20% darker color. If you saturate the color by 10%, you get **DEAFBC**, and if you desaturate by 10%, it is **DEDBDC**.

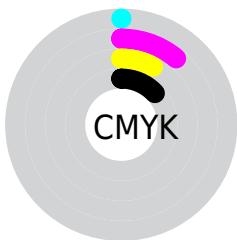
Distribution



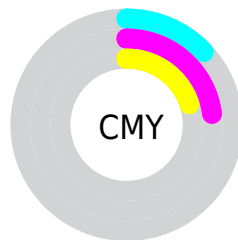
- Red (87%)
- Green (77%)
- Blue (80%)



- Red (87%)
- Yellow (77%)
- Blue (80%)



- Cyan (0%)
- Magenta (11%)
- Yellow (8%)
- Black (13%)



- Cyan (13%)
- Magenta (23%)
- Yellow (20%)

Brightness & Saturation Gradients

These gradients show how the Hex color DEC5CC changes by changing the brightness by 10 percent. The first figure shows a shift by +10% for each color and the second figure -10%.

Similar to the brightness gradients but the following saturation gradients show a change of the Hex color DEC5CC by changing the saturation by 10% instead.

 DEC5CC

 DEC5CC

FFFFFFF

 C2AAB1

FFFEFF

 A78F96

 8C767C

 735D63

 5A454B

 422F35

 2C1A20

 190007

 000000

 DEC5CC

 DEC5CC

 DEAFBC

 DEDBDC

 DE99AC

 DEF1EC

 DE829C

 DEFFFC

 DE6C8C

 DEFFFF

 DE567C

 DE406C

 DE2A5C

 DE134C

 DE003E

Harmonies

Analogous

The Analogous color harmony consists of three colors that are next to each other on the color wheel.



D7C6D5



DEC5CC



E0C5C3

Triad

The Triadic color harmony groups three colors that are evenly spaced from another and form a triangle on the color wheel.



DEC5CC



C9CDBB



B8CFDB

Complementary

The Complementary color scheme is a pair of colors which are on the opposite of each other on the color wheel.



DEC5CC



C5DED7

Split Complementary

Split-complementary colors differ from the complementary color scheme. The scheme consists of three colors, the original color and two neighbors of the complement color.



B4D1D4



DEC5CC



BFD0C1

Square

The Square scheme is like the rectangle color scheme, but the four colors are evenly spaced on the color wheel.



DEC5CC



D4CAB9



B7D1CA



C1CCDE

Rectangle

The Rectangle color scheme consists of four colors that form a rectangle on the color wheel.



DEC5CC



DEC7BE



B7D1CA



B6D0D9

Sweetspot

The Sweet Spot groups the original color and five complimentary colors.



DEC5CC



FFF7F9



D7C5DE



807A7C



000000



808080

Same Dimension

The Same Dimension uses a secret algorithm to generate beautiful new colors.



DEC5CC



FFDBE5



DECAC5



706568



B00031



30000E

Inverse Universe

The Inverse Universe completely reimagines the original color for something new.



DEC5CC



FFDBE5



C5D9DE



706568



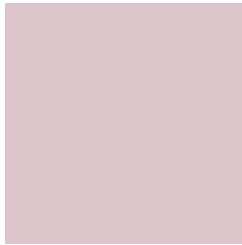
B00031



30000E

Previews

White Background



This preview shows how the Hex color DEC5CC looks on a white background.

Color Contrast Check

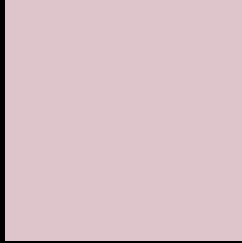
Large Text (above 18pt) WCAG AA × Fail

Any Text WCAG AA × Fail

Large Text (above 18pt) WCAG AAA × Fail

Any Text WCAG AAA × Fail

Black Background



This preview shows how the Hex color DEC5CC looks on a black background.

Color Contrast Check

Large Text (above 18pt) WCAG AA ✓ Pass

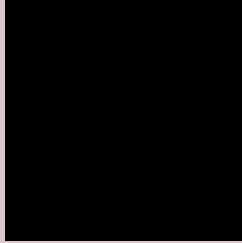
Any Text WCAG AA ✓ Pass

Large Text (above 18pt) WCAG AAA ✓ Pass

Any Text WCAG AAA ✓ Pass

If you want to check with other color combinations, try the [Color Contrast Checker](#).

Hex DEC5CC Background



This preview shows how black text looks on a background with the Hex color DEC5CC.

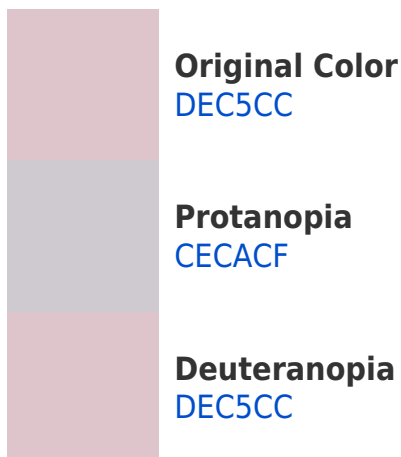


This preview shows how white text looks on a background with the Hex color DEC5CC.

Color Blindness Simulation

Color vision deficiency is a very complex topic, and I could not describe the different causes any better than Wikipedia does, so if you want to learn more, you should check out their [article about color blindness](#).

Dichromacy





Tritanopia
DFC4D3

Trichromacy



Original Color
DEC5CC

Protanomaly
D4C8CE

Deuteranomaly
DEC5CC

Tritanomaly
DFC4D0

Monochromacy



Original Color
DEC5CC

Achromatopsia
CDCDCD

Achromatomaly
D3CACD

CSS Examples

Text

The CSS property to change the color of the text to Hex DEC5CC is called "color". The color property can be set on classes, ids or directly on the HTML element.

This example shows how text in the color #DEC5CC looks like.

```
.text, #text, p{  
    color:#DEC5CC  
}
```

If you want to add a text shadow in that color use the text-shadow property, you can generate a text shadow directly with our [CSS Text Shadow Generator](#).

Here you see how black text with a 4 pixel #DEC5CC colored shadow looks like.

```
.shadow{ text-shadow: 4px 4px 2px #DEC5CC
}
```

Border

The CSS property to change the border of an element to Hex DEC5CC is called "border". The border property can be set on classes, ids or directly on the HTML element.

This example shows the color as border, it can be applied via the CSS property "border" or "border-color".

```
.border, #border, table{ border:4px solid
#DEC5CC }
```

If only the border color should be changed use the property `border-color`.

```
.border{ border-color:#DEC5CC }
```

If you want to add a box shadow in that color use:

Here you see how a box with a 4 pixel #DEC5CC colored shadow looks like.

```
.boxshadow{ -moz-box-shadow:4px 4px 4px  
4px #DEC5CC; -webkit-box-shadow:4px 4px  
4px 4px #DEC5CC; box-shadow:4px 4px 4px  
4px #DEC5CC }
```

Background

The CSS property to change the background color of an element to Hex DEC5CC is called "background". The background property can be set on classes, ids or directly on the HTML element.

```
.background, #background, body{  
background:#DEC5CC }
```

If only the background color should be changed can be used:

```
.background{ background-color:#DEC5CC }
```

This example shows the color as background, it is applied via the CSS property "background".

To optimize and compress your CSS code, you can use our [online CSS compressor and optimizer](#) based on csstidy. If you want to create a linear or radial gradient as background or border, check our [CSS Gradient Generator](#).

Hey! You found this booklet interesting? Support Converting Colors with the new Membership Option!

The pro membership hides all ads, plus gives you double the colors in the color bucket, and more awesome pro features!

[Learn more, Memberships starting at \\$2.50/m!](#)

**Follow me
on Twitter!**

@ConvertingColor