

# Converting Colors

Hex(DEC6C5)

Have a look what the booklet for  
Hex(DEC6C5) contains.

<b>Hex(DEC6C5)</b> .....	3
<i><b>Conversions</b></i> .....	4
<i><b>Details</b></i> .....	6
<i><b>Harmonies</b></i> .....	11
<i><b>Previews</b></i> .....	23
<i><b>Color Blindness Simulation</b></i> .....	26
<i><b>CSS Examples</b></i> .....	29

# **Color**

**Hex(DEC6C5)**

# Conversions

## Conversions Part 1

Format	Color
Hex	DEC6C5
RGB	222, 198, 197
RGB Percent	87%, 78%, 77%
CMY	0.1294, 0.2235, 0.2275
CMYK	0.00, 0.11, 0.11, 0.13
HSL	2°, 27%, 82%
HSV	2°, 11%, 87%
XYZ	60.3963, 59.9490, 61.2114
YIQ	205.0620, 14.6250, 4.7770

# Conversions

## Conversions Part 2

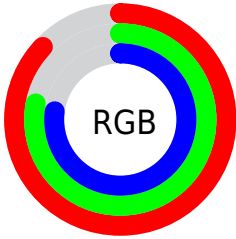
Format	Color
R <sub>Y</sub> B	222, 198, 197
Decimal	14599877
CIE Lab	81.81, 8.26, 3.57
CIE LCh	82, 9.003, 23.389
Yxy	59.9490, 0.3327, 0.3302
Android (android.graphics.Color)	4292789957 (0xFFDEC6C5)
YUV	205.0620, -3.9746, 14.8546
Hunter-Lab	77.4267, 3.7413, 7.3257

# Details

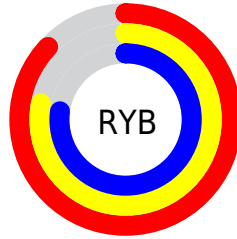
The Hex color **DEC6C5** is a light color, and the websafe version is hex **CCCCCC**. A complement of this color would be **C5DDDE**, and the grayscale version is **CDCDCD**.

A 20% lighter version of the original color is **FFFFFFE**, and **A7908F** is the 20% darker color. If you saturate the color by 10%, you get **DEB1AF**, and if you desaturate by 10%, it is **DEDBDB**.

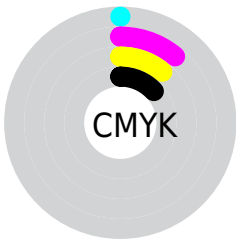
# Distribution



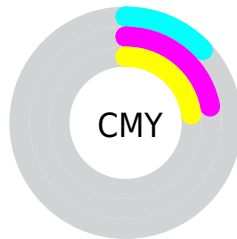
- Red (87%)
- Green (78%)
- Blue (77%)



- Red (87%)
- Yellow (78%)
- Blue (77%)



- Cyan (0%)
- Magenta (11%)
- Yellow (11%)
- Black (13%)



- Cyan (13%)
- Magenta (22%)
- Yellow (23%)

# Brightness & Saturation Gradients

These gradients show how the Hex color DEC6C5 changes by changing the brightness by 10 percent. The first figure shows a shift by +10% for each color and the second figure -10%.

Similar to the brightness gradients but the following saturation gradients show a change of the Hex color DEC6C5 by changing the saturation by 10% instead.



 DEC6C5

 DEC6C5

FFFFFFF

 C2ABAA

FFFFFFE

 A7908F

 8C7776

 735E5D

 5A4646

 42302F

 2C1B1B

 190000

 000000

 DEC6C5

 DEC6C5

 DEB1AF

 DEDDBD

 DE9B99

 DEF1F1

 DE8682

 DEFFFF

 DE716C

 DE5B56

 DE4640

 DE312A

 DE1C13

 DE0900

# Harmonies

## Analogous

The Analogous color harmony consists of three colors that are next to each other on the color wheel.



DCC6CE



DEC6C5



DBC8BE

# Triad

The Triadic color harmony groups three colors that are evenly spaced from another and form a triangle on the color wheel.



DEC6C5



C1CFC1



C1CDDC

# Complementary

The Complementary color scheme is a pair of colors which are on the opposite of each other on the color wheel.



DEC6C5



C5DDDE

# Split Complementary

Split-complementary colors differ from the complementary color scheme. The scheme consists of three colors, the original color and two neighbors of the complement color.



B9CFD9



DEC6C5



BAD0C9

# Square

The Square scheme is like the rectangle color scheme, but the four colors are evenly spaced on the color wheel.



DEC6C5



CBCDBC



B7D0D2



CBCADB

# Rectangle

The Rectangle color scheme consists of four colors that form a rectangle on the color wheel.



DEC6C5



D7C9BB



B7D0D2



BECEDB



# Sweetspot

The Sweet Spot groups the original color and five complimentary colors.



DEC6C5



FFF8F7



DEC5DD



807B7A



000000



808080

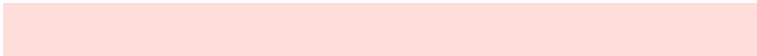


# Same Dimension

The Same Dimension uses a secret algorithm to generate beautiful new colors.



DEC6C5



FFDDBB



DED2C5



706565



B00700



300200



# Inverse Universe

The Inverse Universe completely reimagines the original color for something new.



C5DDDE



DBFEFF



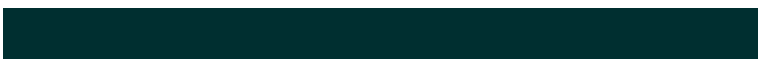
C5D1DE



657070



00A9B0

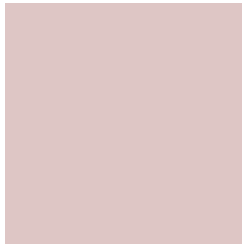


002F30



# Previews

## White Background



This preview shows how the Hex color DEC6C5 looks on a white background.

## Color Contrast Check

Large Text (above 18pt) WCAG AA × Fail

Any Text WCAG AA × Fail

Large Text (above 18pt) WCAG AAA × Fail

Any Text WCAG AAA × Fail

# Black Background



This preview shows how the Hex color DEC6C5 looks on a black background.

## Color Contrast Check

Large Text (above 18pt) WCAG AA ✓ Pass

Any Text WCAG AA ✓ Pass

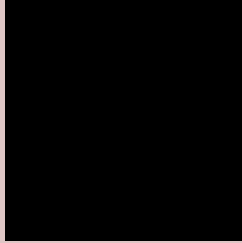
Large Text (above 18pt) WCAG AAA ✓ Pass

Any Text WCAG AAA ✓ Pass

If you want to check with other color combinations, try the [Color Contrast Checker](#).



## Hex DEC6C5 Background



This preview shows how black text looks on a background with the Hex color DEC6C5.

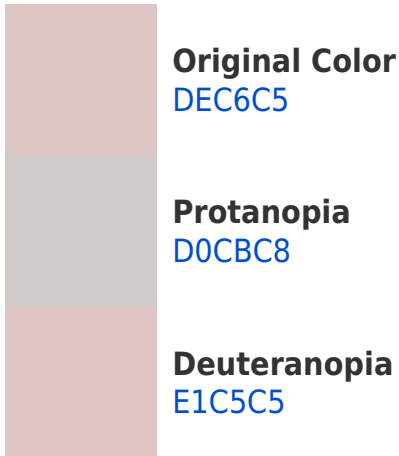


This preview shows how white text looks on a background with the Hex color DEC6C5.

# Color Blindness Simulation

Color vision deficiency is a very complex topic, and I could not describe the different causes any better than Wikipedia does, so if you want to learn more, you should check out their [article about color blindness](#).

## Dichromacy





**Tritanopia**  
E0C4D3

# Trichromacy



**Original Color**  
DEC6C5

**Protanomaly**  
D5C9C7

**Deuteranomaly**  
E0C5C5

**Tritanomaly**  
DFC5CE

# Monochromacy



**Original Color**  
DEC6C5

**Achromatopsia**  
CDCDCD

**Achromatomaly**  
D3CACA

# CSS Examples

## Text

The CSS property to change the color of the text to Hex DEC6C5 is called "color". The color property can be set on classes, ids or directly on the HTML element.

This example shows how text in the color #DEC6C5 looks like.

```
.text, #text, p{  
    color:#DEC6C5  
}
```

If you want to add a text shadow in that color use the text-shadow property, you can generate a text shadow directly with our [CSS Text Shadow Generator](#).

Here you see how black text with a 4 pixel #DEC6C5 colored shadow looks like.

```
.shadow{ text-shadow: 4px 4px 2px #DEC6C5  
}
```

## Border

The CSS property to change the border of an element to Hex DEC6C5 is called "border". The border property can be set on classes, ids or directly on the HTML element.

This example shows the color as border, it can be applied via the CSS property "border" or "border-color".

```
.border, #border, table{ border:4px solid  
#DEC6C5 }
```

If only the border color should be changed use the property `border-color`.

```
.border{ border-color:#DEC6C5 }
```

If you want to add a box shadow in that color use:

Here you see how a box with a 4 pixel #DEC6C5 colored shadow looks like.

```
.boxshadow{ -moz-box-shadow:4px 4px 4px  
4px #DEC6C5; -webkit-box-shadow:4px 4px  
4px 4px #DEC6C5; box-shadow:4px 4px 4px  
4px #DEC6C5 }
```

# Background

The CSS property to change the background color of an element to Hex DEC6C5 is called "background". The background property can be set on classes, ids or directly on the HTML element.

```
.background, #background, body{  
background:#DEC6C5 }
```

If only the background color should be changed can be used:

```
.background{ background-color:#DEC6C5 }
```

This example shows the color as background, it is applied via the CSS property "background".

To optimize and compress your CSS code, you can use our [online CSS compressor and optimizer](#) based on csstidy. If you want to create a linear or radial gradient as background or border, check our [CSS Gradient Generator](#).



Hey! You found this booklet interesting? Support Converting Colors with the new Membership Option!

The pro membership hides all ads, plus gives you double the colors in the color bucket, and more awesome pro features!

**[Learn more, Memberships starting at \\$2.50/m!](#)**

**Follow me  
on Twitter!**

@ConvertingColor