

Converting Colors

Hex(DECAD2)

Have a look what the booklet for
Hex(DECAD2) contains.

Hex(DECAD2)	3
<i>Conversions</i>	4
<i>Details</i>	6
<i>Harmonies</i>	11
<i>Previews</i>	23
<i>Color Blindness Simulation</i>	26
<i>CSS Examples</i>	29

Color

Hex(DECAD2)

Conversions

Conversions Part 1

Format	Color
Hex	DECAD2
RGB	222, 202, 210
RGB Percent	87%, 79%, 82%
CMY	0.1294, 0.2078, 0.1765
CMYK	0.00, 0.09, 0.05, 0.13
HSL	336°, 23%, 83%
HSV	336°, 9%, 87%
XYZ	62.8776, 62.4238, 69.7078
YIQ	208.8920, 9.3520, 6.7280

Conversions

Conversions Part 2

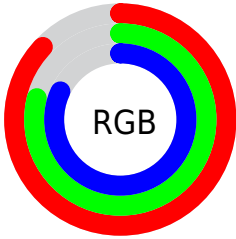
Format	Color
R _Y B	222, 202, 210
Decimal	14600914
CIE Lab	83.14, 8.35, -1.45
CIE LCh	83, 8.472, 350.177
Yxy	62.4238, 0.3224, 0.3201
Android (android.graphics.Color)	4292790994 (0xFFDECAD2)
YUV	208.8920, 0.5462, 11.4957
Hunter-Lab	79.0087, 3.7905, 2.9958

Details

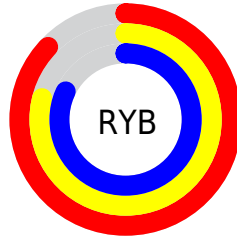
The Hex color **DECAD2** is a light color, and the websafe version is hex **CCCCCC**. A complement of this color would be **CADED6**, and the grayscale version is **D1D1D1**.

A 20% lighter version of the original color is **FFFFFF**, and **A7949C** is the 20% darker color. If you saturate the color by 10%, you get **DEB4C5**, and if you desaturate by 10%, it is **DEE0DF**.

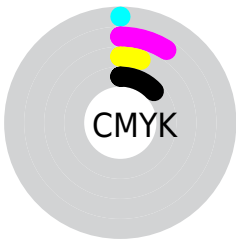
Distribution



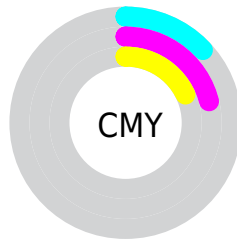
- Red (87%)
- Green (79%)
- Blue (82%)



- Red (87%)
- Yellow (79%)
- Blue (82%)



- Cyan (0%)
- Magenta (9%)
- Yellow (5%)
- Black (13%)



- Cyan (13%)
- Magenta (21%)
- Yellow (18%)

Brightness & Saturation Gradients

These gradients show how the Hex color DECAD2 changes by changing the brightness by 10 percent. The first figure shows a shift by +10% for each color and the second figure -10%.

Similar to the brightness gradients but the following saturation gradients show a change of the Hex color DECAD2 by changing the saturation by 10% instead.

 DECAD2

FFFFFF

 DECAD2

 C2AFB6

 A7949C

 8C7A82

 736168

 5A4A50

 43333A

 2C1E24

 19050F

 000000

 #DECAD2

 #DECAD2

 #DEB4C5

 #DEE0DF

 #DE9EB7

 #DEF6ED

 #DE87AA

 #DEFFFA

 #DE719D

 #DEFFFF

 #DE5B8F

 #DE4582

 #DE2F75

 #DE1867

 #DE025A

Harmonies

Analogous

The Analogous color harmony consists of three colors that are next to each other on the color wheel.



D7CBD9



DECAD2



E1CACA

Triad

The Triadic color harmony groups three colors that are evenly spaced from another and form a triangle on the color wheel.



DECAD2



D0D0C0



BDD3DB

Complementary

The Complementary color scheme is a pair of colors which are on the opposite of each other on the color wheel.



DECAD2



CADED6

Split Complementary

Split-complementary colors differ from the complementary color scheme. The scheme consists of three colors, the original color and two neighbors of the complement color.



BCD4D4



DECAD2



C7D2C5

Square

The Square scheme is like the rectangle color scheme, but the four colors are evenly spaced on the color wheel.



DECAD2



D9CEC0



BFD4CC



C4D1DF

Rectangle

The Rectangle color scheme consists of four colors that form a rectangle on the color wheel.



DECAD2



E0CBC5



BFD4CC



BCD3D9

Sweetspot

The Sweet Spot groups the original color and five complimentary colors.



DECAD2



FFF7FA



D6CADE



807A7C



000000



808080

Same Dimension

The Same Dimension uses a secret algorithm to generate beautiful new colors.



DECAD2



FFE3EE



DECCCA



706569



B00046



300013

Inverse Universe

The Inverse Universe completely reimagines the original color for something new.



DECAD2



FFE3EE



CADCDE



706569



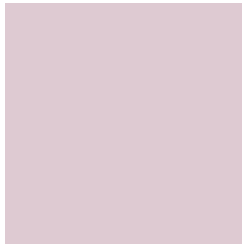
B00046



300013

Previews

White Background



This preview shows how the Hex color DECAD2 looks on a white background.

Color Contrast Check

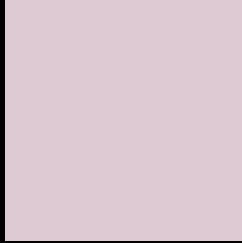
Large Text (above 18pt) WCAG AA × Fail

Any Text WCAG AA × Fail

Large Text (above 18pt) WCAG AAA × Fail

Any Text WCAG AAA × Fail

Black Background



This preview shows how the Hex color DECAD2 looks on a black background.

Color Contrast Check

Large Text (above 18pt) WCAG AA ✓ Pass

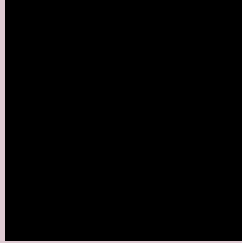
Any Text WCAG AA ✓ Pass

Large Text (above 18pt) WCAG AAA ✓ Pass

Any Text WCAG AAA ✓ Pass

If you want to check with other color combinations, try the [Color Contrast Checker](#).

Hex DECAD2 Background



This preview shows how black text looks on a background with the Hex color DECAD2.

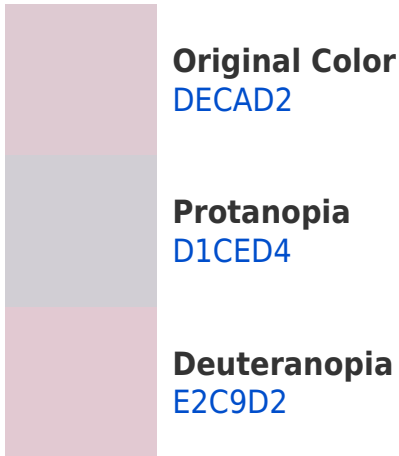


This preview shows how white text looks on a background with the Hex color DECAD2.

Color Blindness Simulation

Color vision deficiency is a very complex topic, and I could not describe the different causes any better than Wikipedia does, so if you want to learn more, you should check out their [article about color blindness](#).

Dichromacy





Tritanopia
DFC9D9

Trichromacy



Original Color
DECAD2

Protanomaly
D6CDD3

Deuteranomaly
E1C9D2

Tritanomaly
DFC9D6

Monochromacy



Original Color
DECAD2

Achromatopsia
D1D1D1

Achromatomaly
D6CED1

CSS Examples

Text

The CSS property to change the color of the text to Hex DECAD2 is called "color". The color property can be set on classes, ids or directly on the HTML element.

This example shows how text in the color #DECAD2 looks like.

```
.text, #text, p{  
    color:#DECAD2  
}
```

If you want to add a text shadow in that color use the text-shadow property, you can generate a text shadow directly with our [CSS Text Shadow Generator](#).

Here you see how black text with a 4 pixel #DECAD2 colored shadow looks like.

```
.shadow{ text-shadow: 4px 4px 2px #DECAD2
}
```

Border

The CSS property to change the border of an element to Hex DECAD2 is called "border". The border property can be set on classes, ids or directly on the HTML element.

This example shows the color as border, it can be applied via the CSS property "border" or "border-color".

```
.border, #border, table{ border:4px solid
#DECAD2 }
```

If only the border color should be changed use the property `border-color`.

```
.border{ border-color:#DECAD2 }
```

If you want to add a box shadow in that color use:

Here you see how a box with a 4 pixel #DECAD2 colored shadow looks like.

```
.boxshadow{ -moz-box-shadow:4px 4px 4px  
4px #DECAD2; -webkit-box-shadow:4px 4px  
4px 4px #DECAD2; box-shadow:4px 4px 4px  
4px #DECAD2 }
```

Background

The CSS property to change the background color of an element to Hex DECAD2 is called "background". The background property can be set on classes, ids or directly on the HTML element.

```
.background, #background, body{  
background:#DECAD2 }
```

If only the background color should be changed can be used:

```
.background{ background-color:#DECAD2 }
```

This example shows the color as background, it is applied via the CSS property "background".

To optimize and compress your CSS code, you can use our [online CSS compressor and optimizer](#) based on csstidy. If you want to create a linear or radial gradient as background or border, check our [CSS Gradient Generator](#).

Hey! You found this booklet interesting? Support Converting Colors with the new Membership Option!

The pro membership hides all ads, plus gives you double the colors in the color bucket, and more awesome pro features!

[Learn more, Memberships starting at \\$2.50/m!](#)

**Follow me
on Twitter!**

@ConvertingColor