

Converting Colors

Hex(DECBCF)

Have a look what the booklet for
Hex(DECBCF) contains.

Hex(DECBCF)	3
<i>Conversions</i>	4
<i>Details</i>	6
<i>Harmonies</i>	11
<i>Previews</i>	23
<i>Color Blindness Simulation</i>	26
<i>CSS Examples</i>	29

Color

Hex(DECBCF)

Conversions

Conversions Part 1

Format	Color
Hex	DECBCF
RGB	222, 203, 207
RGB Percent	87%, 80%, 81%
CMY	0.1294, 0.2039, 0.1882
CMYK	0.00, 0.09, 0.07, 0.13
HSL	347°, 22%, 83%
HSV	347°, 9%, 87%
XYZ	62.7426, 62.7465, 67.8359
YIQ	209.1370, 10.0400, 5.2720

Conversions

Conversions Part 2

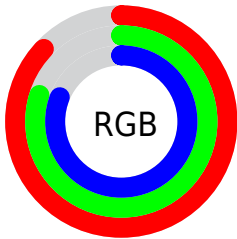
Format	Color
R _Y B	222, 203, 207
Decimal	14601167
CIE Lab	83.31, 7.30, 0.41
CIE LCh	83, 7.312, 3.180
Yxy	62.7465, 0.3245, 0.3246
Android (android.graphics.Color)	4292791247 (0xFFDECBCF)
YUV	209.1370, -1.0535, 11.2809
Hunter-Lab	79.2127, 2.7638, 4.6743

Details

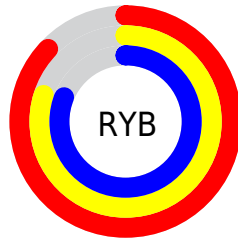
The Hex color **DECBCF** is a light color, and the websafe version is hex **CCCCCC**. A complement of this color would be **CBDEDA**, and the grayscale version is **D1D1D1**.

A 20% lighter version of the original color is **FFFFFF**, and **A79599** is the 20% darker color. If you saturate the color by 10%, you get **DEB5BD**, and if you desaturate by 10%, it is **DEE1E1**.

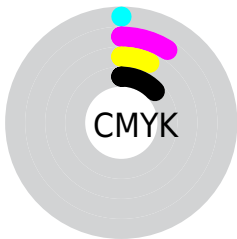
Distribution



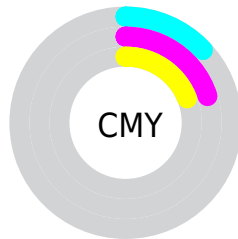
- Red (87%)
- Green (80%)
- Blue (81%)



- Red (87%)
- Yellow (80%)
- Blue (81%)



- Cyan (0%)
- Magenta (9%)
- Yellow (7%)
- Black (13%)



- Cyan (13%)
- Magenta (20%)
- Yellow (19%)

Brightness & Saturation Gradients

These gradients show how the Hex color DECBCF changes by changing the brightness by 10 percent. The first figure shows a shift by +10% for each color and the second figure -10%.

Similar to the brightness gradients but the following saturation gradients show a change of the Hex color DECBCF by changing the saturation by 10% instead.

 DECBCF

FFFFFF

 DECBCF

 C2B0B3

 A79599

 8C7B7F

 736266

 5A4A4E

 433437

 2C1F22

 19060B

 000000

 DECBCF

 DECBCF

 DEB5BD

 DEE1E1

 DE9FAC

 DEF7F2

 DE889A

 DEFFFF

 DE7289

 DE5C77

 DE4666

 DE3054

 DE1943

 DE0331

Harmonies

Analogous

The Analogous color harmony consists of three colors that are next to each other on the color wheel.



D9CCD6



DECBCF



DFCBC8

Triad

The Triadic color harmony groups three colors that are evenly spaced from another and form a triangle on the color wheel.



DECBCF



CDD1C4



C3D2DC

Complementary

The Complementary color scheme is a pair of colors which are on the opposite of each other on the color wheel.



DECBCF



CBDEDA

Split Complementary

Split-complementary colors differ from the complementary color scheme. The scheme consists of three colors, the original color and two neighbors of the complement color.



BFD3D7



DECBCF



C5D3C9

Square

The Square scheme is like the rectangle color scheme, but the four colors are evenly spaced on the color wheel.



DECBCF



D5CFC2



C0D4D0



CAD0DD

Rectangle

The Rectangle color scheme consists of four colors that form a rectangle on the color wheel.



DECBCF



DDCCC5



C0D4D0



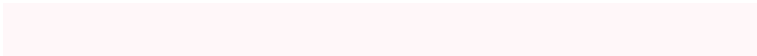
C1D3DA

Sweetspot

The Sweet Spot groups the original color and five complimentary colors.



DECBCF



FFF7F9



DACBDE



807A7B



000000



808080

Same Dimension

The Same Dimension uses a secret algorithm to generate beautiful new colors.



DECBCF



FFE6EB



DED0CB



706567



B00025



30000A

Inverse Universe

The Inverse Universe completely reimagines the original color for something new.



DECBCF



FFE6EB



CBD9DE



706567



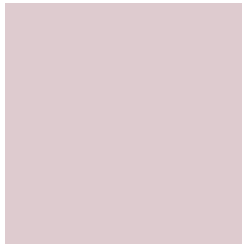
B00025



30000A

Previews

White Background



This preview shows how the Hex color DECBCF looks on a white background.

Color Contrast Check

Large Text (above 18pt) WCAG AA × Fail

Any Text WCAG AA × Fail

Large Text (above 18pt) WCAG AAA × Fail

Any Text WCAG AAA × Fail

Black Background



This preview shows how the Hex color DECBCF looks on a black background.

Color Contrast Check

Large Text (above 18pt) WCAG AA ✓ Pass

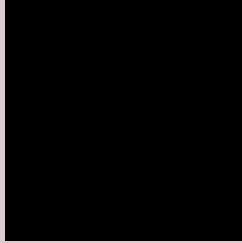
Any Text WCAG AA ✓ Pass

Large Text (above 18pt) WCAG AAA ✓ Pass

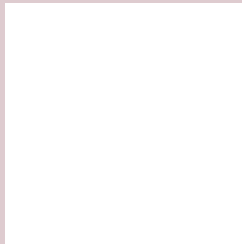
Any Text WCAG AAA ✓ Pass

If you want to check with other color combinations, try the [Color Contrast Checker](#).

Hex DECBCF Background



This preview shows how black text looks on a background with the Hex color DECBCF.

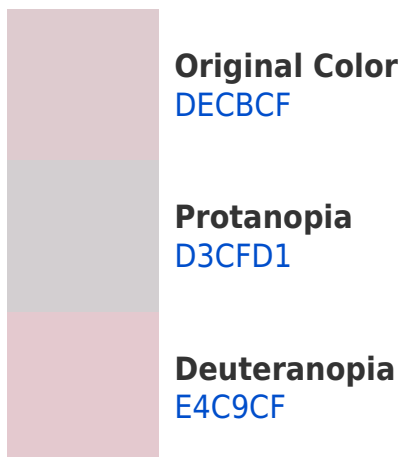


This preview shows how white text looks on a background with the Hex color DECBCF.

Color Blindness Simulation

Color vision deficiency is a very complex topic, and I could not describe the different causes any better than Wikipedia does, so if you want to learn more, you should check out their [article about color blindness](#).

Dichromacy





Tritanopia
DFC9D9

Trichromacy



Original Color
DECBCF

Protanomaly
D7CED0

Deuteranomaly
E2CACF

Tritanomaly
DFCAD5

Monochromacy



Original Color
DECBCF

Achromatopsia
D1D1D1

Achromatomaly
D6CFD0

CSS Examples

Text

The CSS property to change the color of the text to Hex DECBCF is called "color". The color property can be set on classes, ids or directly on the HTML element.

This example shows how text in the color #DECBCF looks like.

```
.text, #text, p{  
    color:#DECBCF  
}
```

If you want to add a text shadow in that color use the text-shadow property, you can generate a text shadow directly with our [CSS Text Shadow Generator](#).

Here you see how black text with a 4 pixel #DECBCF colored shadow looks like.

```
.shadow{ text-shadow: 4px 4px 2px #DECBCF
}
```

Border

The CSS property to change the border of an element to Hex DECBCF is called "border". The border property can be set on classes, ids or directly on the HTML element.

This example shows the color as border, it can be applied via the CSS property "border" or "border-color".

```
.border, #border, table{ border:4px solid
#DECBCF }
```

If only the border color should be changed use the property `border-color`.

```
.border{ border-color:#DECBCF }
```

If you want to add a box shadow in that color use:

Here you see how a box with a 4 pixel #DECBCF colored shadow looks like.

```
.boxshadow{ -moz-box-shadow:4px 4px 4px  
4px #DECBCF; -webkit-box-shadow:4px 4px  
4px 4px #DECBCF; box-shadow:4px 4px 4px  
4px #DECBCF }
```

Background

The CSS property to change the background color of an element to Hex DECBCF is called "background". The background property can be set on classes, ids or directly on the HTML element.

```
.background, #background, body{  
background:#DECBCF }
```

If only the background color should be changed can be used:

```
.background{ background-color:#DECBCF }
```

This example shows the color as background, it is applied via the CSS property "background".

To optimize and compress your CSS code, you can use our [online CSS compressor and optimizer](#) based on csstidy. If you want to create a linear or radial gradient as background or border, check our [CSS Gradient Generator](#).

Hey! You found this booklet interesting? Support Converting Colors with the new Membership Option!

The pro membership hides all ads, plus gives you double the colors in the color bucket, and more awesome pro features!

[Learn more, Memberships starting at \\$2.50/m!](#)

**Follow me
on Twitter!**

@ConvertingColor