

Converting Colors

Hex(DECDB2)

Have a look what the booklet for
Hex(DECDB2) contains.

Hex(DECDB2)	3
<i>Conversions</i>	4
<i>Details</i>	6
<i>Harmonies</i>	11
<i>Previews</i>	23
<i>Color Blindness Simulation</i>	26
<i>CSS Examples</i>	29

Color

Hex(DECDB2)

Conversions

Conversions Part 1

Format	Color
Hex	DECDB2
RGB	222, 205, 178
RGB Percent	87%, 80%, 70%
CMY	0.1294, 0.1961, 0.3020
CMYK	0.00, 0.08, 0.20, 0.13
HSL	37°, 40%, 78%
HSV	37°, 20%, 87%
XYZ	59.9914, 62.4066, 51.0033
YIQ	207.0050, 18.7990, -4.7930

Conversions

Conversions Part 2

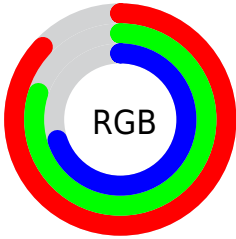
Format	Color
R _Y B	206, 222, 178
Decimal	14601650
CIE Lab	83.13, 1.62, 15.59
CIE LCh	83, 15.671, 84.079
Yxy	62.4066, 0.3460, 0.3599
Android (android.graphics.Color)	4292791730 (0xFFDECEB2)
YUV	207.0050, -14.2995, 13.1506
Hunter-Lab	78.9978, -2.6923, 17.0192

Details

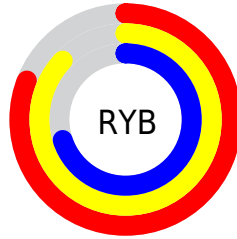
The Hex color **DECDB2** is a light color, and the websafe version is hex **CCCC99**. A complement of this color would be **B2C3DE**, and the grayscale version is **CFCFCF**.

A 20% lighter version of the original color is **FFFFEA**, and **A7977D** is the 20% darker color. If you saturate the color by 10%, you get **DEC49C**, and if you desaturate by 10%, it is **DED6C8**.

Distribution



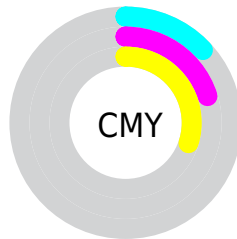
- Red (87%)
- Green (80%)
- Blue (70%)



- Red (81%)
- Yellow (87%)
- Blue (70%)



- Cyan (0%)
- Magenta (8%)
- Yellow (20%)
- Black (13%)



- Cyan (13%)
- Magenta (20%)
- Yellow (30%)

Brightness & Saturation Gradients

These gradients show how the Hex color DECDB2 changes by changing the brightness by 10 percent. The first figure shows a shift by +10% for each color and the second figure -10%.

Similar to the brightness gradients but the following saturation gradients show a change of the Hex color DECDB2 by changing the saturation by 10% instead.

 DECDB2

FFFFFFF

 FFFFEA

 DECDB2

 C2B297

 A7977D

 8C7D64

 72644C

 594C35

 413620

 2B2009

 130A00

 000000

 DECDB2

 DECDB2

 DEC49C

 DED6C8

 DEBC86

 DEDEDE

 DEB36F

 DEE7F5

 DEAB59

 DEEFFF

 DEA243

 DEF8FF

 DE9A2D

 DEFFFF

 DE9117

 DE8800

Harmonies

Analogous

The Analogous color harmony consists of three colors that are next to each other on the color wheel.



EAC8B8



DECDB2



CED2B4

Triad

The Triadic color harmony groups three colors that are evenly spaced from another and form a triangle on the color wheel.



DECDB2



A9D8DA



E0C8E1

Complementary

The Complementary color scheme is a pair of colors which are on the opposite of each other on the color wheel.



DECDB2



B2C3DE

Split Complementary

Split-complementary colors differ from the complementary color scheme. The scheme consists of three colors, the original color and two neighbors of the complement color.



CECCEA



DECDB2



AED5E6

Square

The Square scheme is like the rectangle color scheme, but the four colors are evenly spaced on the color wheel.



DECDB2



AFD8CB



BCD1EC



EBC5D3

Rectangle

The Rectangle color scheme consists of four colors that form a rectangle on the color wheel.



DECDB2



C3D4BA



BCD1EC



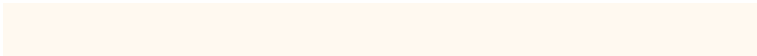
DAC9E4

Sweetspot

The Sweet Spot groups the original color and five complimentary colors.



DECDB2



FFF9F0



DEB2C4



807C77



000000



808080

Same Dimension

The Same Dimension uses a secret algorithm to generate beautiful new colors.



DECDB2



FFE7C2



DADEB2



706C65



B06C00



301E00

Inverse Universe

The Inverse Universe completely reimagines the original color for something new.



B2C3DE



C2D9FF



B6B2DE



656970



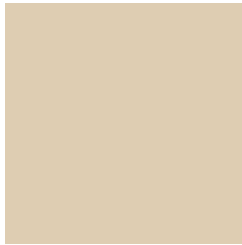
0044B0



001330

Previews

White Background



This preview shows how the Hex color DECDB2 looks on a white background.

Color Contrast Check

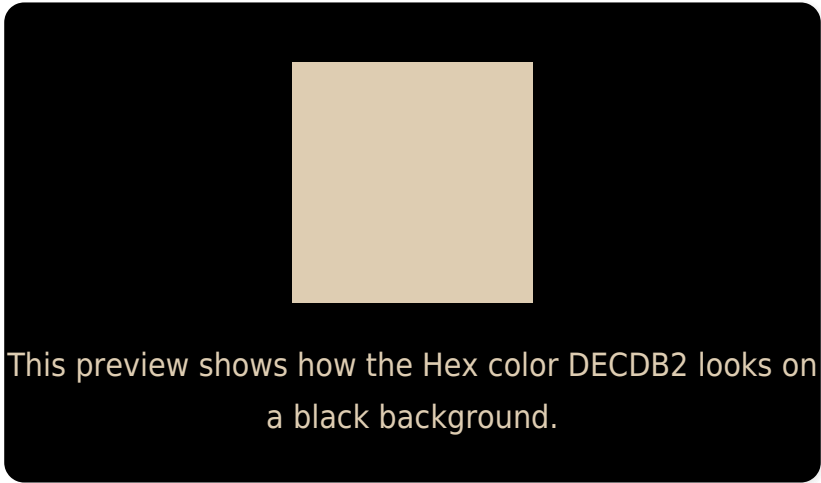
Large Text (above 18pt) WCAG AA × Fail

Any Text WCAG AA × Fail

Large Text (above 18pt) WCAG AAA × Fail

Any Text WCAG AAA × Fail

Black Background



Color Contrast Check

Large Text (above 18pt) WCAG AA ✓ Pass

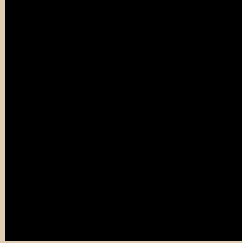
Any Text WCAG AA ✓ Pass

Large Text (above 18pt) WCAG AAA ✓ Pass

Any Text WCAG AAA ✓ Pass

If you want to check with other color combinations, try the [Color Contrast Checker](#).

Hex DECDB2 Background



This preview shows how black text looks on a background with the Hex color DECDB2.

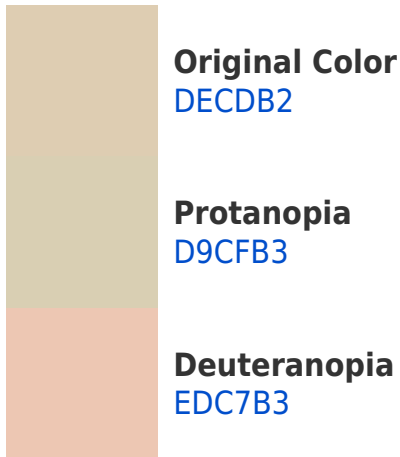


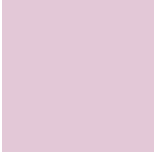
This preview shows how white text looks on a background with the Hex color DECDB2.

Color Blindness Simulation

Color vision deficiency is a very complex topic, and I could not describe the different causes any better than Wikipedia does, so if you want to learn more, you should check out their [article about color blindness](#).

Dichromacy





Tritanopia
E3C8D7

Trichromacy



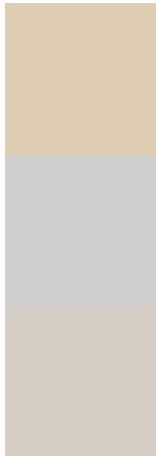
Original Color
DECDB2

Protanomaly
DBCEB3

Deuteranomaly
E8C9B3

Tritanomaly
E1CACA

Monochromacy



Original Color
DECDB2

Achromatopsia
CFCFCF

Achromatomaly
D4CEC4

CSS Examples

Text

The CSS property to change the color of the text to Hex DECDB2 is called "color". The color property can be set on classes, ids or directly on the HTML element.

This example shows how text in the color #DECDB2 looks like.

```
.text, #text, p{  
    color:#DECDB2  
}
```

If you want to add a text shadow in that color use the text-shadow property, you can generate a text shadow directly with our [CSS Text Shadow Generator](#).

Here you see how black text with a 4 pixel #DECDB2 colored shadow looks like.

```
.shadow{ text-shadow: 4px 4px 2px #DECDB2
}
```

Border

The CSS property to change the border of an element to Hex DECDB2 is called "border". The border property can be set on classes, ids or directly on the HTML element.

This example shows the color as border, it can be applied via the CSS property "border" or "border-color".

```
.border, #border, table{ border:4px solid
#DECDB2 }
```

If only the border color should be changed use the property `border-color`.

```
.border{ border-color:#DECDB2 }
```

If you want to add a box shadow in that color use:

Here you see how a box with a 4 pixel #DECDB2 colored shadow looks like.

```
.boxshadow{ -moz-box-shadow:4px 4px 4px  
4px #DECDB2; -webkit-box-shadow:4px 4px  
4px 4px #DECDB2; box-shadow:4px 4px 4px  
4px #DECDB2 }
```

Background

The CSS property to change the background color of an element to Hex DECDB2 is called "background". The background property can be set on classes, ids or directly on the HTML element.

```
.background, #background, body{  
background:#DECDB2 }
```

If only the background color should be changed can be used:

```
.background{ background-color:#DECDB2 }
```

This example shows the color as background, it is applied via the CSS property "background".

To optimize and compress your CSS code, you can use our [online CSS compressor and optimizer](#) based on csstidy. If you want to create a linear or radial gradient as background or border, check our [CSS Gradient Generator](#).

Hey! You found this booklet interesting? Support Converting Colors with the new Membership Option!

The pro membership hides all ads, plus gives you double the colors in the color bucket, and more awesome pro features!

[Learn more, Memberships starting at \\$2.50/m!](#)

**Follow me
on Twitter!**

@ConvertingColor