

Converting Colors

Hex(DF316E)

Have a look what the booklet for
Hex(DF316E) contains.

Hex(DF316E)	3
<i>Conversions</i>	4
<i>Details</i>	6
<i>Harmonies</i>	11
<i>Previews</i>	23
<i>Color Blindness Simulation</i>	26
<i>CSS Examples</i>	29

Color

Hex(DF316E)

Conversions

Conversions Part 1

Format	Color
Hex	DF316E
RGB	223, 49, 110
RGB Percent	87%, 19%, 43%
CMY	0.1255, 0.8078, 0.5686
CMYK	0.00, 0.78, 0.51, 0.13
HSL	339°, 73%, 53%
HSV	339°, 78%, 87%
XYZ	34.3442, 19.0104, 16.6111
YIQ	107.9800, 84.1230, 55.8590

Conversions

Conversions Part 2

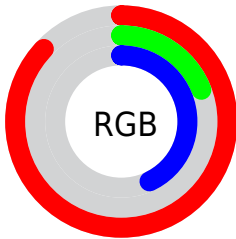
Format	Color
R_{YB}	223, 49, 110
Decimal	14627182
CIE _{Lab}	50.70, 68.63, 8.13
CIE _{LCh}	51, 69.113, 6.757
Yxy	19.0104, 0.4909, 0.2717
Android (android.graphics.Color)	4292817262 (0xFFDF316E)
YUV	107.9800, 0.9959, 100.8725
Hunter-Lab	43.6009, 64.3020, 7.9323

Details

The Hex color **DF316E** is a dark color, and the websafe version is hex **CC3366**. The color can be described as dark muted rose. A complement of this color would be **31DFA2**, and the grayscale version is **6C6C6C**.

A 20% lighter version of the original color is **FF70A1**, and **A1003F** is the 20% darker color. If you saturate the color by 10%, you get **DF1B60**, and if you desaturate by 10%, it is **DF477C**.

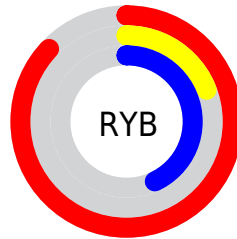
Distribution



Red (87%)

Green (19%)

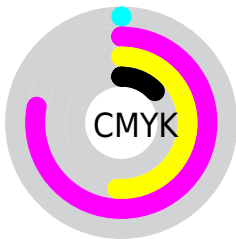
Blue (43%)



Red (87%)

Yellow (19%)

Blue (43%)

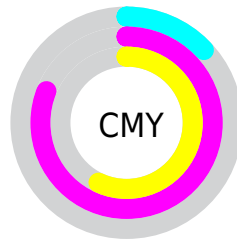


Cyan (0%)

Magenta (78%)

Yellow (51%)

Black (13%)



Cyan (13%)

Magenta (81%)

Yellow (57%)

Brightness & Saturation Gradients

These gradients show how the Hex color DF316E changes by changing the brightness by 10 percent. The first figure shows a shift by +10% for each color and the second figure -10%.

Similar to the brightness gradients but the following saturation gradients show a change of the Hex color DF316E by changing the saturation by 10% instead.

 DF316E

 DF316E

FFFFFF

 C00056

 FF70A1

 A1003F

 FF8DBC

 830029

 FFAAD8

 650016

 FFC8F4

 490003

 FFE5FF

 290001

 000000

 DF316E

 DF316E

 DF1B60

 DF477C

 DF0451

 DF5E8B

 DF004E

 DF7499

 DF8AA8

 DFA1B6

 DFB7C5

 DFCDD3

 DFE3E2

 DFFAF0

Harmonies

Analogous

The Analogous color harmony consists of three colors that are next to each other on the color wheel.



C842A8



DF316E



D64635

Triad

The Triadic color harmony groups three colors that are evenly spaced from another and form a triangle on the color wheel.



DF316E



468800



008BE5

Complementary

The Complementary color scheme is a pair of colors which are on the opposite of each other on the color wheel.



DF316E



31DFA2

Split Complementary

Split-complementary colors differ from the complementary color scheme. The scheme consists of three colors, the original color and two neighbors of the complement color.



0092BE



DF316E



009047

Square

The Square scheme is like the rectangle color scheme, but the four colors are evenly spaced on the color wheel.



DF316E



867B00



009385



007CEF

Rectangle

The Rectangle color scheme consists of four colors that form a rectangle on the color wheel.



DF316E



C35B09



009385



008EDB

Sweetspot

The Sweet Spot groups the original color and five complimentary colors.



DF316E



FFC4D9



9F31DF



805C68



000000



808080

Same Dimension

The Same Dimension uses a secret algorithm to generate beautiful new colors.



DF316E



FF0F63



DF4831



706569



B0003E



300011

Inverse Universe

The Inverse Universe completely reimagines the original color for something new.



DF316E



FF0F63



31C8DF



706569



B0003E



300011

Previews

White Background



This preview shows how the Hex color DF316E looks on a white background.

Color Contrast Check

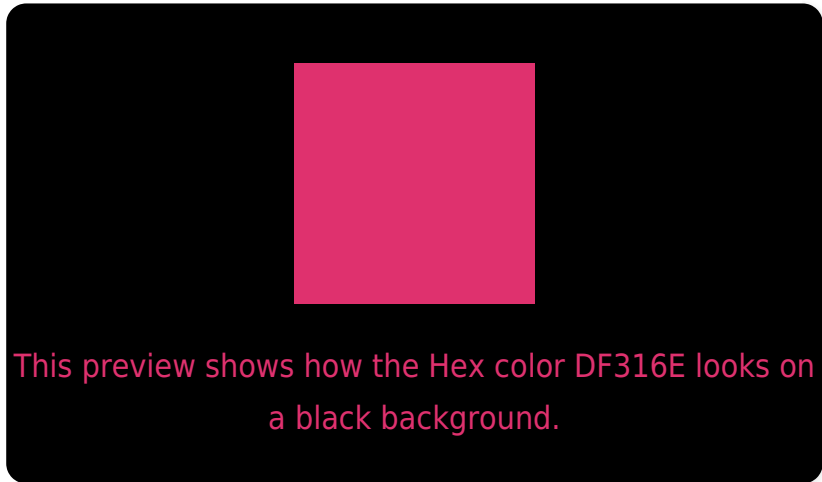
Large Text (above 18pt) WCAG AA ✓ Pass

Any Text WCAG AA × Fail

Large Text (above 18pt) WCAG AAA × Fail

Any Text WCAG AAA × Fail

Black Background



Color Contrast Check

Large Text (above 18pt) WCAG AA ✓ Pass

Any Text WCAG AA ✓ Pass

Large Text (above 18pt) WCAG AAA ✓ Pass

Any Text WCAG AAA × Fail

If you want to check with other color combinations, try the [Color Contrast Checker](#).

Hex DF316E Background



This preview shows how black text looks on a background with the Hex color DF316E.



This preview shows how white text looks on a background with the Hex color DF316E.

Color Blindness Simulation

Color vision deficiency is a very complex topic, and I could not describe the different causes any better than Wikipedia does, so if you want to learn more, you should check out their [article about color blindness](#).

Dichromacy

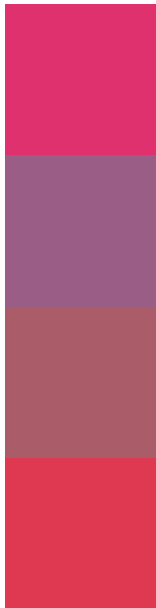


Original Color
DF316E

Protanopia
737894

Deuteranopia
8C7566

Trichromacy



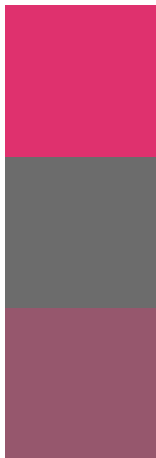
Original Color
DF316E

Protanomaly
9A5E86

Deuteranomaly
AA5C69

Tritanomaly
DE3951

Monochromacy



Original Color
DF316E

Achromatopsia
6C6C6C

Achromatomaly
96576D

CSS Examples

Text

The CSS property to change the color of the text to Hex DF316E is called "color". The color property can be set on classes, ids or directly on the HTML element.

This example shows how text in the color #DF316E looks like.

```
.text, #text, p{  
    color:#DF316E  
}
```

If you want to add a text shadow in that color use the text-shadow property, you can generate a text shadow directly with our [CSS Text Shadow Generator](#).

Here you see how black text with a 4 pixel #DF316E colored shadow looks like.

```
.shadow{ text-shadow: 4px 4px 2px #DF316E
}
```

Border

The CSS property to change the border of an element to Hex DF316E is called "border". The border property can be set on classes, ids or directly on the HTML element.

This example shows the color as border, it can be applied via the CSS property "border" or "border-color".

```
.border, #border, table{ border:4px solid
#DF316E }
```

If only the border color should be changed use the property `border-color`.

```
.border{ border-color:#DF316E }
```

If you want to add a box shadow in that color use:

Here you see how a box with a 4 pixel #DF316E colored shadow looks like.

```
.boxshadow{ -moz-box-shadow:4px 4px 4px  
4px #DF316E; -webkit-box-shadow:4px 4px  
4px 4px #DF316E; box-shadow:4px 4px 4px  
4px #DF316E }
```

Background

The CSS property to change the background color of an element to Hex DF316E is called "background". The background property can be set on classes, ids or directly on the HTML element.

```
.background, #background, body{  
background:#DF316E }
```

If only the background color should be changed can be used:

```
.background{ background-color:#DF316E }
```

This example shows the color as background, it is applied via the CSS property "background".

To optimize and compress your CSS code, you can use our [online CSS compressor and optimizer](#) based on csstidy. If you want to create a linear or radial gradient as background or border, check our [CSS Gradient Generator](#).

Hey! You found this booklet interesting? Support Converting Colors with the new Membership Option!

The pro membership hides all ads, plus gives you double the colors in the color bucket, and more awesome pro features!

[Learn more, Memberships starting at \\$2.50/m!](#)

**Follow me
on Twitter!**

@ConvertingColor