

Converting Colors

Hex(DF3369)

Have a look what the booklet for
Hex(DF3369) contains.

Hex(DF3369)	3
<i>Conversions</i>	4
<i>Details</i>	6
<i>Harmonies</i>	11
<i>Previews</i>	23
<i>Color Blindness Simulation</i>	26
<i>CSS Examples</i>	29

Color

Hex(DF3369)

Conversions

Conversions Part 1

Format	Color
Hex	DF3369
RGB	223, 51, 105
RGB Percent	87%, 20%, 41%
CMY	0.1255, 0.8000, 0.5882
CMYK	0.00, 0.77, 0.53, 0.13
HSL	341°, 73%, 54%
HSV	341°, 77%, 87%
XYZ	34.1651, 19.0755, 15.2459
YIQ	108.5840, 85.1780, 53.2580

Conversions

Conversions Part 2

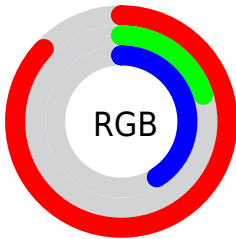
Format	Color
R_{YB}	223, 51, 105
Decimal	14627689
CIE Lab	50.78, 67.68, 11.28
CIE LCh	51, 68.617, 9.458
Yxy	19.0755, 0.4989, 0.2785
Android (android.graphics.Color)	4292817769 (0xFFDF3369)
YUV	108.5840, -1.7669, 100.3428
Hunter-Lab	43.6756, 63.1987, 9.8765

Details

The Hex color **DF3369** is a dark color, and the websafe version is hex **CC3366**. The color can be described as dark muted rose. A complement of this color would be **33DFA9**, and the grayscale version is **6D6D6D**.

A 20% lighter version of the original color is **FF719C**, and **A1003A** is the 20% darker color. If you saturate the color by 10%, you get **DF1D5A**, and if you desaturate by 10%, it is **DF4978**.

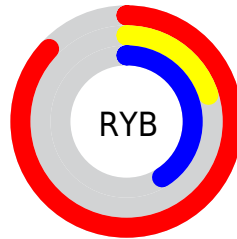
Distribution



Red (87%)

Green (20%)

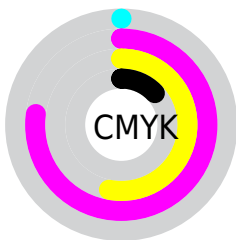
Blue (41%)



Red (87%)

Yellow (20%)

Blue (41%)

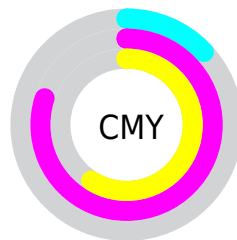


Cyan (0%)

Magenta (77%)

Yellow (53%)

Black (13%)



Cyan (13%)

Magenta (80%)

Yellow (59%)

Brightness & Saturation Gradients

These gradients show how the Hex color DF3369 changes by changing the brightness by 10 percent. The first figure shows a shift by +10% for each color and the second figure -10%.

Similar to the brightness gradients but the following saturation gradients show a change of the Hex color DF3369 by changing the saturation by 10% instead.

 DF3369

 DF3369

FFFFFF

 C00051

 FF719C

 A1003A

 FF8EB7

 830025

 FFABD2

 650011

 FFC8EE

 490003

 FFE6FF

 290001

 000000

 DF3369

 DF3369

 DF1D5A

 DF4978

■ DF064A

■ DF6088

■ DF0046

■ DF7697

■ DF8CA6

■ DFA3B5

■ DFB9C5

■ DFCFD4

■ DFE5E3

■ DFFCF3

Harmonies

Analogous

The Analogous color harmony consists of three colors that are next to each other on the color wheel.



CB40A3



DF3369



D44A31

Triad

The Triadic color harmony groups three colors that are evenly spaced from another and form a triangle on the color wheel.



DF3369



3F8906



008AE7

Complementary

The Complementary color scheme is a pair of colors which are on the opposite of each other on the color wheel.



DF3369



33DFA9

Split Complementary

Split-complementary colors differ from the complementary color scheme. The scheme consists of three colors, the original color and two neighbors of the complement color.



0091C2



DF3369



00904D

Square

The Square scheme is like the rectangle color scheme, but the four colors are evenly spaced on the color wheel.



DF3369



817C00



00938B



007AEE

Rectangle

The Rectangle color scheme consists of four colors that form a rectangle on the color wheel.



DF3369



BF5E02



00938B



008EDE

Sweetspot

The Sweet Spot groups the original color and five complimentary colors.



DF3369



FFC4D7



A933DF



805C67



000000



808080

Same Dimension

The Same Dimension uses a secret algorithm to generate beautiful new colors.



DF3369



FF125C



DF5333



706569



B00037



30000F

Inverse Universe

The Inverse Universe completely reimagines the original color for something new.



DF3369



FF125C



33BFD9



706569



B00037



30000F

Previews

White Background



This preview shows how the Hex color DF3369 looks on a white background.

Color Contrast Check

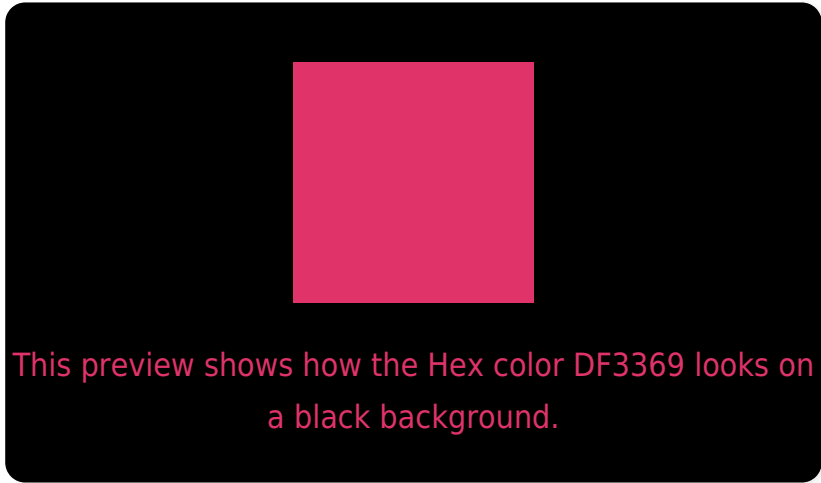
Large Text (above 18pt) WCAG AA ✓ Pass

Any Text WCAG AA × Fail

Large Text (above 18pt) WCAG AAA × Fail

Any Text WCAG AAA × Fail

Black Background



Color Contrast Check

Large Text (above 18pt) WCAG AA ✓ Pass

Any Text WCAG AA ✓ Pass

Large Text (above 18pt) WCAG AAA ✓ Pass

Any Text WCAG AAA × Fail

If you want to check with other color combinations, try the [Color Contrast Checker](#).

Hex DF3369 Background



This preview shows how black text looks on a background with the Hex color DF3369.

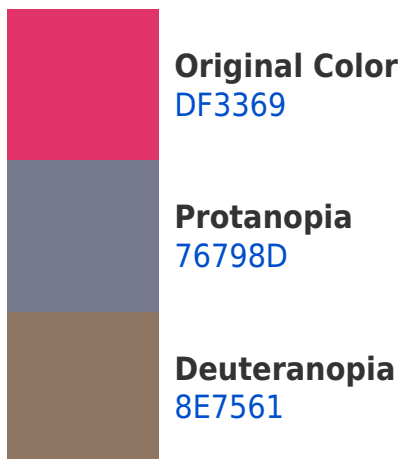


This preview shows how white text looks on a background with the Hex color DF3369.

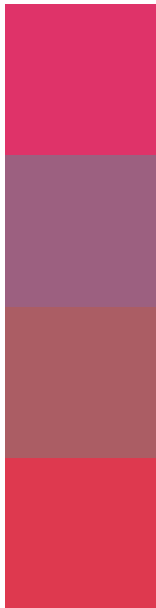
Color Blindness Simulation

Color vision deficiency is a very complex topic, and I could not describe the different causes any better than Wikipedia does, so if you want to learn more, you should check out their [article about color blindness](#).

Dichromacy



Trichromacy



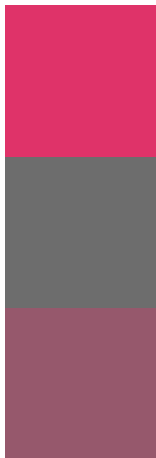
Original Color
DF3369

Protanomaly
9C6080

Deuteranomaly
AB5D64

Tritanomaly
DE394F

Monochromacy



Original Color
DF3369

Achromatopsia
6D6D6D

Achromatomaly
96586C

CSS Examples

Text

The CSS property to change the color of the text to Hex DF3369 is called "color". The color property can be set on classes, ids or directly on the HTML element.

This example shows how text in the color #DF3369 looks like.

```
.text, #text, p{  
    color:#DF3369  
}
```

If you want to add a text shadow in that color use the text-shadow property, you can generate a text shadow directly with our [CSS Text Shadow Generator](#).

Here you see how black text with a 4 pixel #DF3369 colored shadow looks like.

```
.shadow{ text-shadow: 4px 4px 2px #DF3369
}
```

Border

The CSS property to change the border of an element to Hex DF3369 is called "border". The border property can be set on classes, ids or directly on the HTML element.

This example shows the color as border, it can be applied via the CSS property "border" or "border-color".

```
.border, #border, table{ border:4px solid
#DF3369 }
```

If only the border color should be changed use the property `border-color`.

```
.border{ border-color:#DF3369 }
```

If you want to add a box shadow in that color use:

Here you see how a box with a 4 pixel #DF3369 colored shadow looks like.

```
.boxshadow{ -moz-box-shadow:4px 4px 4px  
4px #DF3369; -webkit-box-shadow:4px 4px  
4px 4px #DF3369; box-shadow:4px 4px 4px  
4px #DF3369 }
```

Background

The CSS property to change the background color of an element to Hex DF3369 is called "background". The background property can be set on classes, ids or directly on the HTML element.

```
.background, #background, body{  
background:#DF3369 }
```

If only the background color should be changed can be used:

```
.background{ background-color:#DF3369 }
```

This example shows the color as background, it is applied via the CSS property "background".

To optimize and compress your CSS code, you can use our [online CSS compressor and optimizer](#) based on csstidy. If you want to create a linear or radial gradient as background or border, check our [CSS Gradient Generator](#).

Hey! You found this booklet interesting? Support Converting Colors with the new Membership Option!

The pro membership hides all ads, plus gives you double the colors in the color bucket, and more awesome pro features!

[Learn more, Memberships starting at \\$2.50/m!](#)

**Follow me
on Twitter!**

@ConvertingColor