

# Converting Colors

Hex(DF4780)

Have a look what the booklet for  
Hex(DF4780) contains.

<b>Hex(DF4780)</b> .....	3
<b><i>Conversions</i></b> .....	4
<b><i>Details</i></b> .....	6
<b><i>Harmonies</i></b> .....	11
<b><i>Previews</i></b> .....	23
<b><i>Color Blindness Simulation</i></b> .....	26
<b><i>CSS Examples</i></b> .....	29

# Color

**Hex(DF4780)**

# Conversions

## Conversions Part 1

<b>Format</b>	<b>Color</b>
Hex	DF4780
RGB	223, 71, 128
RGB Percent	87%, 28%, 50%
CMY	0.1255, 0.7216, 0.4980
CMYK	0.00, 0.68, 0.43, 0.13
HSL	338°, 70%, 58%
HSV	338°, 68%, 87%
XYZ	36.5809, 21.7530, 22.6928
YIQ	122.9460, 72.2950, 49.9510

# Conversions

## Conversions Part 2

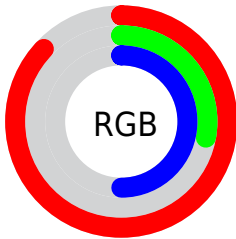
<b>Format</b>	<b>Color</b>
<b>R<sub>YB</sub></b>	223, 71, 128
Decimal	14632832
CIE <sub>Lab</sub>	53.76, 62.99, 1.70
CIE <sub>LCh</sub>	54, 63.016, 1.550
Yxy	21.7530, 0.4515, 0.2685
Android (android.graphics.Color)	4292822912 (0xFFDF4780)
YUV	122.9460, 2.4916, 87.7474
Hunter-Lab	46.6401, 58.3818, 3.8004

# Details

The Hex color **DF4780** is a dark color, and the websafe version is hex **CC3366**. The color can be described as middle muted rose. A complement of this color would be **47DFA6**, and the grayscale version is **7B7B7B**.

A 20% lighter version of the original color is **FF81B5**, and **A3004F** is the 20% darker color. If you saturate the color by 10%, you get **DF3172**, and if you desaturate by 10%, it is **DF5D8E**.

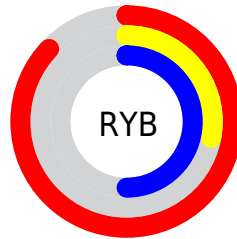
# Distribution



Red (87%)

Green (28%)

Blue (50%)



Red (87%)

Yellow (28%)

Blue (50%)

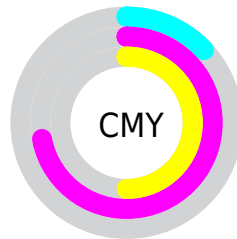


Cyan (0%)

Magenta (68%)

Yellow (43%)

Black (13%)



Cyan (13%)

Magenta (72%)

Yellow (50%)

# Brightness & Saturation Gradients

These gradients show how the Hex color DF4780 changes by changing the brightness by 10 percent. The first figure shows a shift by +10% for each color and the second figure -10%.

Similar to the brightness gradients but the following saturation gradients show a change of the Hex color DF4780 by changing the saturation by 10% instead.



 DF4780

 DF4780

FFFFFF

 C12667

 FF81B5

 A3004F

 FF9DD0

 850038

 FFBAEC

 680023

 FFD7FF

 4C000D

 FFF5FF

 2F0002

 000000

 DF4780

 DF4780

 DF3172

 DF5D8E

 DF1A64

 DF749C

 DF0456

 DF8AAA

 DF0054

 DFA0B8

 DFB7C6

 DFCDD4

 DFE3E2

 DFF9F0

 DFFFFD

# Harmonies

## Analogous

The Analogous color harmony consists of three colors that are next to each other on the color wheel.



C357B5



DF4780



DC524B

# Triad

The Triadic color harmony groups three colors that are evenly spaced from another and form a triangle on the color wheel.



DF4780



618D12



0093E0

# Complementary

The Complementary color scheme is a pair of colors which are on the opposite of each other on the color wheel.



DF4780



47DFA6

# Split Complementary

Split-complementary colors differ from the complementary color scheme. The scheme consists of three colors, the original color and two neighbors of the complement color.



0099B8



DF4780



00964A

# Square

The Square scheme is like the rectangle color scheme, but the four colors are evenly spaced on the color wheel.



DF4780



977F00



009982



0086EE

# Rectangle

The Rectangle color scheme consists of four colors that form a rectangle on the color wheel.



DF4780



CD612A



009982



0096D5



# Sweetspot

The Sweet Spot groups the original color and five complimentary colors.



DF4780



FFCCDF



A547DF



80616C



000000



808080



# Same Dimension

The Same Dimension uses a secret algorithm to generate beautiful new colors.



DF4780



FF2E7C



DF5947



706569



B00042



300012



# Inverse Universe

The Inverse Universe completely reimagines the original color for something new.



DF4780



FF2E7C



47CDDF



706569



B00042

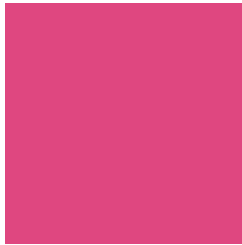


300012



# Previews

## White Background



This preview shows how the Hex color DF4780 looks on a white background.

## Color Contrast Check

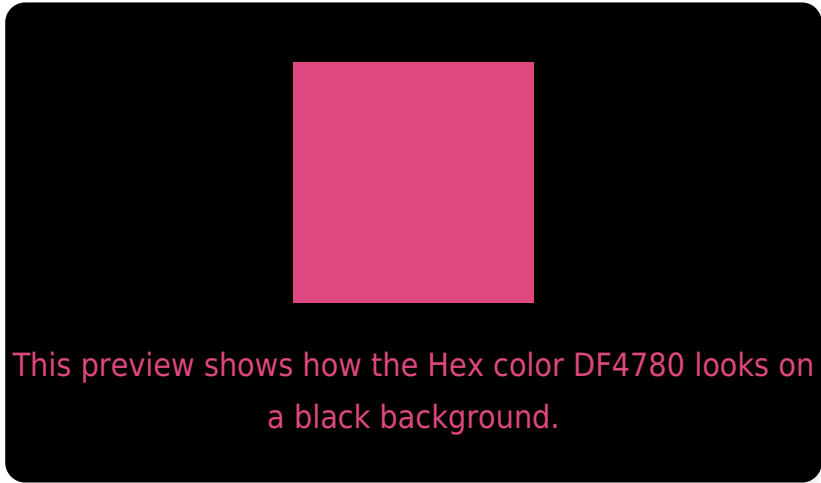
Large Text (above 18pt) WCAG AA ✓ Pass

Any Text WCAG AA × Fail

Large Text (above 18pt) WCAG AAA × Fail

Any Text WCAG AAA × Fail

# Black Background



## Color Contrast Check

Large Text (above 18pt) WCAG AA ✓ Pass

Any Text WCAG AA ✓ Pass

Large Text (above 18pt) WCAG AAA ✓ Pass

Any Text WCAG AAA × Fail

If you want to check with other color combinations, try the [Color Contrast Checker](#).



## Hex DF4780 Background



This preview shows how black text looks on a background with the Hex color DF4780.



This preview shows how white text looks on a background with the Hex color DF4780.

# Color Blindness Simulation

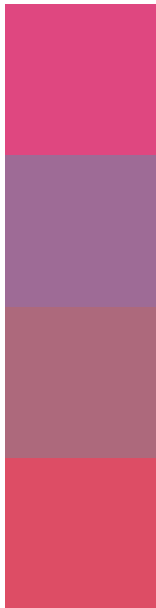
Color vision deficiency is a very complex topic, and I could not describe the different causes any better than Wikipedia does, so if you want to learn more, you should check out their [article about color blindness](#).

## Dichromacy





# Trichromacy



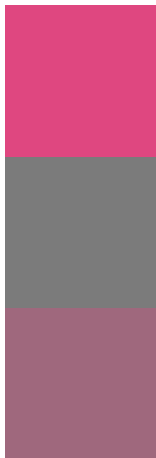
**Original Color**  
DF4780

**Protanomaly**  
9E6B96

**Deuteranomaly**  
AD697C

**Tritanomaly**  
DD4D65

# Monochromacy



**Original Color**  
DF4780

**Achromatopsia**  
7B7B7B

**Achromatomaly**  
9F687D

# CSS Examples

## Text

The CSS property to change the color of the text to Hex DF4780 is called "color". The color property can be set on classes, ids or directly on the HTML element.

This example shows how text in the color #DF4780 looks like.

```
.text, #text, p{  
    color:#DF4780  
}
```

If you want to add a text shadow in that color use the text-shadow property, you can generate a text shadow directly with our [CSS Text Shadow Generator](#).

Here you see how black text with a 4 pixel #DF4780 colored shadow looks like.

```
.shadow{ text-shadow: 4px 4px 2px #DF4780
}
```

## Border

The CSS property to change the border of an element to Hex DF4780 is called "border". The border property can be set on classes, ids or directly on the HTML element.

This example shows the color as border, it can be applied via the CSS property "border" or "border-color".

```
.border, #border, table{ border:4px solid
#DF4780 }
```

If only the border color should be changed use the property `border-color`.

```
.border{ border-color:#DF4780 }
```

If you want to add a box shadow in that color use:

Here you see how a box with a 4 pixel #DF4780 colored shadow looks like.

```
.boxshadow{ -moz-box-shadow:4px 4px 4px  
4px #DF4780; -webkit-box-shadow:4px 4px  
4px 4px #DF4780; box-shadow:4px 4px 4px  
4px #DF4780 }
```

# Background

The CSS property to change the background color of an element to Hex DF4780 is called "background". The background property can be set on classes, ids or directly on the HTML element.

```
.background, #background, body{  
background:#DF4780 }
```

If only the background color should be changed can be used:

```
.background{ background-color:#DF4780 }
```

This example shows the color as background, it is applied via the CSS property "background".

To optimize and compress your CSS code, you can use our [online CSS compressor and optimizer](#) based on csstidy. If you want to create a linear or radial gradient as background or border, check our [CSS Gradient Generator](#).



Hey! You found this booklet interesting? Support Converting Colors with the new Membership Option!

The pro membership hides all ads, plus gives you double the colors in the color bucket, and more awesome pro features!

**[Learn more, Memberships starting at \\$2.50/m!](#)**

**Follow me  
on Twitter!**

@ConvertingColor