

Converting Colors

Hex(DF4F75)

Have a look what the booklet for
Hex(DF4F75) contains.

Hex(DF4F75)	3
<i>Conversions</i>	4
<i>Details</i>	6
<i>Harmonies</i>	11
<i>Previews</i>	23
<i>Color Blindness Simulation</i>	26
<i>CSS Examples</i>	29

Color

Hex(DF4F75)

Conversions

Conversions Part 1

Format	Color
Hex	DF4F75
RGB	223, 79, 117
RGB Percent	87%, 31%, 46%
CMY	0.1255, 0.6902, 0.5412
CMYK	0.00, 0.65, 0.48, 0.13
HSL	344°, 69%, 59%
HSV	344°, 65%, 87%
XYZ	36.4383, 22.5643, 19.2645
YIQ	126.3880, 73.6260, 42.3460

Conversions

Conversions Part 2

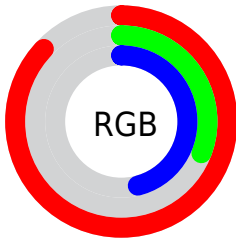
Format	Color
R_{YB}	223, 79, 117
Decimal	14634869
CIE _{Lab}	54.62, 58.83, 9.48
CIE _{LCh}	55, 59.585, 9.156
Yxy	22.5643, 0.4656, 0.2883
Android (android.graphics.Color)	4292824949 (0xFFDF4F75)
YUV	126.3880, -4.6283, 84.7287
Hunter-Lab	47.5019, 53.7975, 9.2062

Details

The Hex color **DF4F75** is a dark color, and the websafe version is hex **CC3366**. The color can be described as middle muted rose. A complement of this color would be **4FDFB9**, and the grayscale version is **7E7E7E**.

A 20% lighter version of the original color is **FF87A9**, and **A30645** is the 20% darker color. If you saturate the color by 10%, you get **DF3965**, and if you desaturate by 10%, it is **DF6585**.

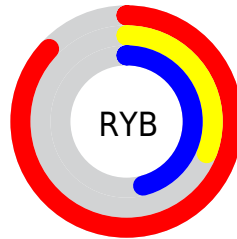
Distribution



Red (87%)

Green (31%)

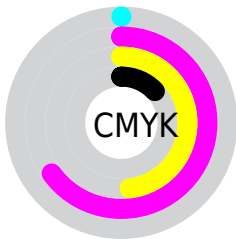
Blue (46%)



Red (87%)

Yellow (31%)

Blue (46%)

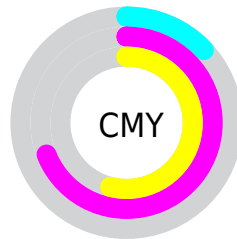


Cyan (0%)

Magenta (65%)

Yellow (48%)

Black (13%)



Cyan (13%)

Magenta (69%)

Yellow (54%)

Brightness & Saturation Gradients

These gradients show how the Hex color DF4F75 changes by changing the brightness by 10 percent. The first figure shows a shift by +10% for each color and the second figure -10%.

Similar to the brightness gradients but the following saturation gradients show a change of the Hex color DF4F75 by changing the saturation by 10% instead.

 DF4F75

 DF4F75

FFFFFF

 C1315D

 FF87A9

 A30645

 FFA4C4

 85002F

 FFC0E0

 68001B

 FFDDFC

 4C0001

 FFFBFF

 2F0002

 000000

 DF4F75

 DF4F75

 DF3965

 DF6585

 DF2254

 DF7C96

 DF0C44

 DF92A6

 DF003B

 DFA8B7

 DFBFC7

 DFD5D7

 DFEBE8

 DFFFF8

 DFFFFF

Harmonies

Analogous

The Analogous color harmony consists of three colors that are next to each other on the color wheel.



CC57A8



DF4F75



D65D44

Triad

The Triadic color harmony groups three colors that are evenly spaced from another and form a triangle on the color wheel.



DF4F75



55922B



0092E3

Complementary

The Complementary color scheme is a pair of colors which are on the opposite of each other on the color wheel.



DF4F75



4FDFB9

Split Complementary

Split-complementary colors differ from the complementary color scheme. The scheme consists of three colors, the original color and two neighbors of the complement color.



0099C3



DF4F75



00985C

Square

The Square scheme is like the rectangle color scheme, but the four colors are evenly spaced on the color wheel.



DF4F75



8D8502



009B92



2183E9

Rectangle

The Rectangle color scheme consists of four colors that form a rectangle on the color wheel.



DF4F75



C56B27



009B92



0095DB

Sweetspot

The Sweet Spot groups the original color and five complimentary colors.



DF4F75



FFCFDB



B94FDF



80626A



000000



808080

Same Dimension

The Same Dimension uses a secret algorithm to generate beautiful new colors.



DF4F75



FF3B6E



DF714F



706568



B0002E



30000D

Inverse Universe

The Inverse Universe completely reimagines the original color for something new.



DF4F75



FF3B6E



4FBDDF



706568



B0002E



30000D

Previews

White Background



This preview shows how the Hex color DF4F75 looks on a white background.

Color Contrast Check

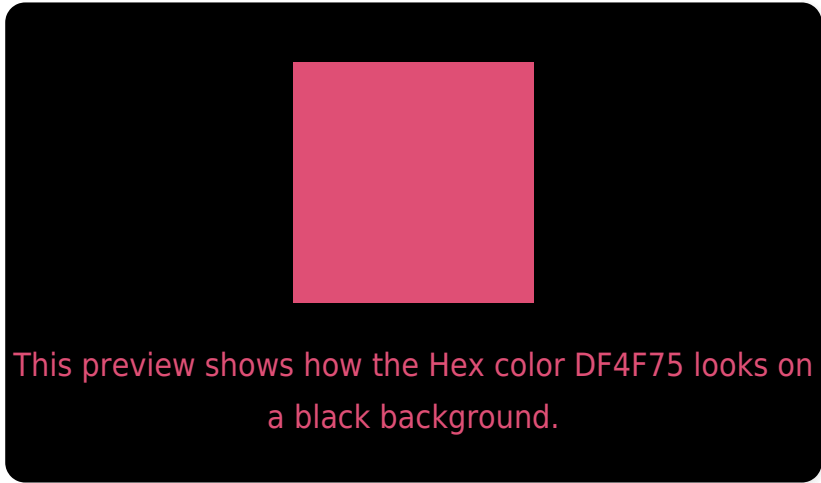
Large Text (above 18pt) WCAG AA ✓ Pass

Any Text WCAG AA × Fail

Large Text (above 18pt) WCAG AAA × Fail

Any Text WCAG AAA × Fail

Black Background



Color Contrast Check

Large Text (above 18pt) WCAG AA ✓ Pass

Any Text WCAG AA ✓ Pass

Large Text (above 18pt) WCAG AAA ✓ Pass

Any Text WCAG AAA × Fail

If you want to check with other color combinations, try the [Color Contrast Checker](#).

Hex DF4F75 Background



This preview shows how black text looks on a background with the Hex color DF4F75.

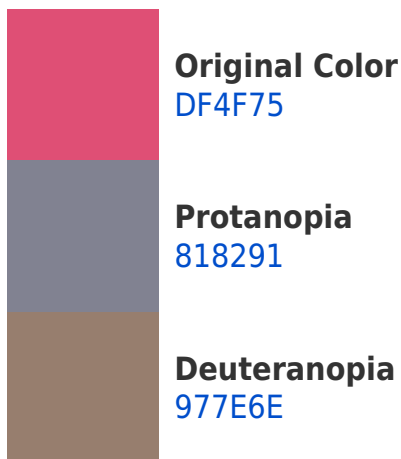


This preview shows how white text looks on a background with the Hex color DF4F75.

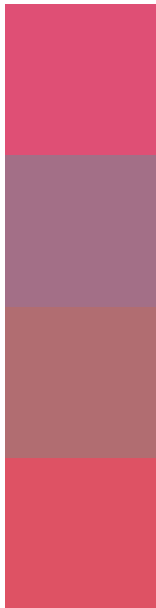
Color Blindness Simulation

Color vision deficiency is a very complex topic, and I could not describe the different causes any better than Wikipedia does, so if you want to learn more, you should check out their [article about color blindness](#).

Dichromacy



Trichromacy



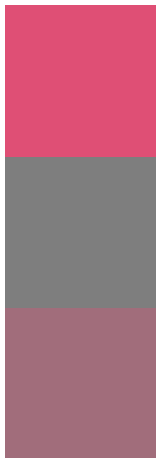
Original Color
DF4F75

Protanomaly
A36F87

Deuteranomaly
B16D71

Tritanomaly
DE5264

Monochromacy



Original Color
DF4F75

Achromatopsia
7E7E7E

Achromatomaly
A16D7B

CSS Examples

Text

The CSS property to change the color of the text to Hex DF4F75 is called "color". The color property can be set on classes, ids or directly on the HTML element.

This example shows how text in the color #DF4F75 looks like.

```
.text, #text, p{  
  color:#DF4F75  
}
```

If you want to add a text shadow in that color use the text-shadow property, you can generate a text shadow directly with our [CSS Text Shadow Generator](#).

Here you see how black text with a 4 pixel #DF4F75 colored shadow looks like.

```
.shadow{ text-shadow: 4px 4px 2px #DF4F75  
}
```

Border

The CSS property to change the border of an element to Hex DF4F75 is called "border". The border property can be set on classes, ids or directly on the HTML element.

This example shows the color as border, it can be applied via the CSS property "border" or "border-color".

```
.border, #border, table{ border:4px solid  
#DF4F75 }
```

If only the border color should be changed use the property `border-color`.

```
.border{ border-color:#DF4F75 }
```

If you want to add a box shadow in that color use:

Here you see how a box with a 4 pixel #DF4F75 colored shadow looks like.

```
.boxshadow{ -moz-box-shadow:4px 4px 4px  
4px #DF4F75; -webkit-box-shadow:4px 4px  
4px 4px #DF4F75; box-shadow:4px 4px 4px  
4px #DF4F75 }
```

Background

The CSS property to change the background color of an element to Hex DF4F75 is called "background". The background property can be set on classes, ids or directly on the HTML element.

```
.background, #background, body{  
background:#DF4F75 }
```

If only the background color should be changed can be used:

```
.background{ background-color:#DF4F75 }
```

This example shows the color as background, it is applied via the CSS property "background".

To optimize and compress your CSS code, you can use our [online CSS compressor and optimizer](#) based on csstidy. If you want to create a linear or radial gradient as background or border, check our [CSS Gradient Generator](#).

Hey! You found this booklet interesting? Support Converting Colors with the new Membership Option!

The pro membership hides all ads, plus gives you double the colors in the color bucket, and more awesome pro features!

[Learn more, Memberships starting at \\$2.50/m!](#)

**Follow me
on Twitter!**

@ConvertingColor