

Converting Colors

Hex(DF5571)

Have a look what the booklet for
Hex(DF5571) contains.

Hex(DF5571)	3
<i>Conversions</i>	4
<i>Details</i>	6
<i>Harmonies</i>	11
<i>Previews</i>	23
<i>Color Blindness Simulation</i>	26
<i>CSS Examples</i>	29

Color

Hex(DF5571)

Conversions

Conversions Part 1

Format	Color
Hex	DF5571
RGB	223, 85, 113
RGB Percent	87%, 33%, 44%
CMY	0.1255, 0.6667, 0.5569
CMYK	0.00, 0.62, 0.49, 0.13
HSL	348°, 68%, 60%
HSV	348°, 62%, 87%
XYZ	36.6606, 23.3772, 18.2028
YIQ	129.4540, 73.2600, 37.9640

Conversions

Conversions Part 2

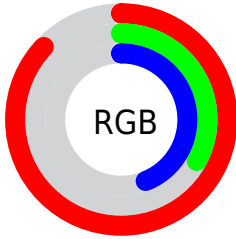
Format	Color
R_{YB}	223, 85, 113
Decimal	14636401
CIE Lab	55.46, 55.95, 13.03
CIE LCh	55, 57.447, 13.108
Yxy	23.3772, 0.4686, 0.2988
Android (android.graphics.Color)	4292826481 (0xFFDF5571)
YUV	129.4540, -8.1118, 82.0398
Hunter-Lab	48.3500, 50.7321, 11.5235

Details

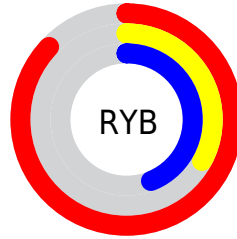
The Hex color **DF5571** is a dark color, and the websafe version is hex **CC3366**. The color can be described as middle muted rose. A complement of this color would be **55DFC3**, and the grayscale version is **818181**.

A 20% lighter version of the original color is **FF8DA5**, and **A31741** is the 20% darker color. If you saturate the color by 10%, you get **DF3F5F**, and if you desaturate by 10%, it is **DF6B83**.

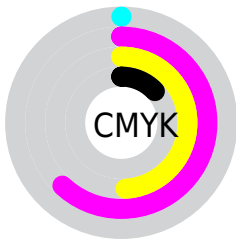
Distribution



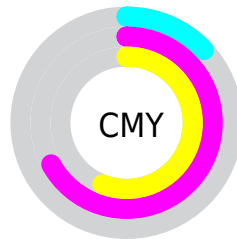
- Red (87%)
- Green (33%)
- Blue (44%)



- Red (87%)
- Yellow (33%)
- Blue (44%)



- Cyan (0%)
- Magenta (62%)
- Yellow (49%)
- Black (13%)



- Cyan (13%)
- Magenta (67%)
- Yellow (56%)

Brightness & Saturation Gradients

These gradients show how the Hex color DF5571 changes by changing the brightness by 10 percent. The first figure shows a shift by +10% for each color and the second figure -10%.

Similar to the brightness gradients but the following saturation gradients show a change of the Hex color DF5571 by changing the saturation by 10% instead.

 DF5571

 DF5571

FFFFFF

 C13859

 FF8DA5

 A31741

 FFA9C0

 85002C

 FFC5DB

 680018

 FFE2F8

 4C0001

 2F0002

 000000

 DF5571

 DF5571

 DF3F5F

 DF6B83

 DF284D

 DF8295

 DF123C

 DF98A6

 DF002D

 DFAEB8

 DFC4CA

 DFDBDC

 DFF1ED

 DFFFFFF

Harmonies

Analogous

The Analogous color harmony consists of three colors that are next to each other on the color wheel.



D05AA3



DF5571



D46443

Triad

The Triadic color harmony groups three colors that are evenly spaced from another and form a triangle on the color wheel.



DF5571



519537



0092E4

Complementary

The Complementary color scheme is a pair of colors which are on the opposite of each other on the color wheel.



DF5571



55DFC3

Split Complementary

Split-complementary colors differ from the complementary color scheme. The scheme consists of three colors, the original color and two neighbors of the complement color.



009AC8



DF5571



009B66

Square

The Square scheme is like the rectangle color scheme, but the four colors are evenly spaced on the color wheel.



DF5571



8A8914



009D9A



4983E6

Rectangle

The Rectangle color scheme consists of four colors that form a rectangle on the color wheel.



DF5571



C17129



009D9A



0096DD

Sweetspot

The Sweet Spot groups the original color and five complimentary colors.



DF5571



FFCFD8



C155DF



806268



000000



808080

Same Dimension

The Same Dimension uses a secret algorithm to generate beautiful new colors.



DF5571



FF4269



DF7C55



706567



B00024



30000A

Inverse Universe

The Inverse Universe completely reimagines the original color for something new.



DF5571



FF4269



55B8DF



706567



B00024



30000A

Previews

White Background



This preview shows how the Hex color DF5571 looks on a white background.

Color Contrast Check

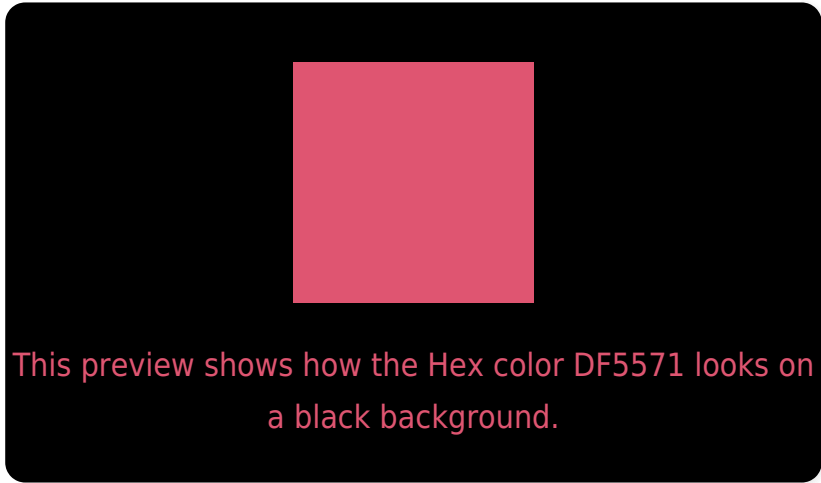
Large Text (above 18pt) WCAG AA ✓ Pass

Any Text WCAG AA × Fail

Large Text (above 18pt) WCAG AAA × Fail

Any Text WCAG AAA × Fail

Black Background



Color Contrast Check

Large Text (above 18pt) WCAG AA ✓ Pass

Any Text WCAG AA ✓ Pass

Large Text (above 18pt) WCAG AAA ✓ Pass

Any Text WCAG AAA × Fail

If you want to check with other color combinations, try the [Color Contrast Checker](#).

Hex DF5571 Background



This preview shows how black text looks on a background with the Hex color DF5571.

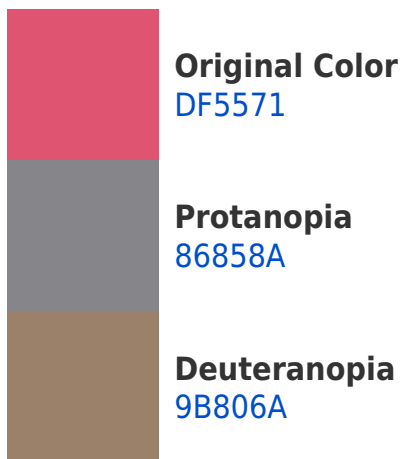


This preview shows how white text looks on a background with the Hex color DF5571.

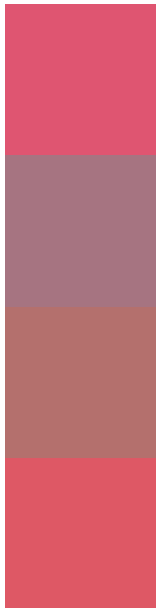
Color Blindness Simulation

Color vision deficiency is a very complex topic, and I could not describe the different causes any better than Wikipedia does, so if you want to learn more, you should check out their [article about color blindness](#).

Dichromacy



Trichromacy



Original Color
DF5571

Protanomaly
A67481

Deuteranomaly
B4706D

Tritanomaly
DE5865

Monochromacy



Original Color
DF5571

Achromatopsia
818181

Achromatomaly
A3717B

CSS Examples

Text

The CSS property to change the color of the text to Hex DF5571 is called "color". The color property can be set on classes, ids or directly on the HTML element.

This example shows how text in the color #DF5571 looks like.

```
.text, #text, p{  
    color:#DF5571  
}
```

If you want to add a text shadow in that color use the text-shadow property, you can generate a text shadow directly with our [CSS Text Shadow Generator](#).

Here you see how black text with a 4 pixel #DF5571 colored shadow looks like.

```
.shadow{ text-shadow: 4px 4px 2px #DF5571  
}
```

Border

The CSS property to change the border of an element to Hex DF5571 is called "border". The border property can be set on classes, ids or directly on the HTML element.

This example shows the color as border, it can be applied via the CSS property "border" or "border-color".

```
.border, #border, table{ border:4px solid  
#DF5571 }
```

If only the border color should be changed use the property `border-color`.

```
.border{ border-color:#DF5571 }
```

If you want to add a box shadow in that color use:

Here you see how a box with a 4 pixel #DF5571 colored shadow looks like.

```
.boxshadow{ -moz-box-shadow:4px 4px 4px  
4px #DF5571; -webkit-box-shadow:4px 4px  
4px 4px #DF5571; box-shadow:4px 4px 4px  
4px #DF5571 }
```

Background

The CSS property to change the background color of an element to Hex DF5571 is called "background". The background property can be set on classes, ids or directly on the HTML element.

```
.background, #background, body{  
background:#DF5571 }
```

If only the background color should be changed can be used:

```
.background{ background-color:#DF5571 }
```

This example shows the color as background, it is applied via the CSS property "background".

To optimize and compress your CSS code, you can use our [online CSS compressor and optimizer](#) based on csstidy. If you want to create a linear or radial gradient as background or border, check our [CSS Gradient Generator](#).

Hey! You found this booklet interesting? Support Converting Colors with the new Membership Option!

The pro membership hides all ads, plus gives you double the colors in the color bucket, and more awesome pro features!

[Learn more, Memberships starting at \\$2.50/m!](#)

**Follow me
on Twitter!**

@ConvertingColor