

Converting Colors

Hex(DF617D)

Have a look what the booklet for
Hex(DF617D) contains.

Hex(DF617D)	3
<i>Conversions</i>	4
<i>Details</i>	6
<i>Harmonies</i>	11
<i>Previews</i>	23
<i>Color Blindness Simulation</i>	26
<i>CSS Examples</i>	29

Color

Hex(DF617D)

Conversions

Conversions Part 1

Format	Color
Hex	DF617D
RGB	223, 97, 125
RGB Percent	87%, 38%, 49%
CMY	0.1255, 0.6196, 0.5098
CMYK	0.00, 0.57, 0.44, 0.13
HSL	347°, 66%, 63%
HSV	347°, 57%, 87%
XYZ	38.4078, 25.7180, 22.3418
YIQ	137.8660, 66.1080, 35.4200

Conversions

Conversions Part 2

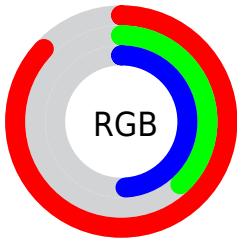
Format	Color
R_{YB}	223, 97, 125
Decimal	14639485
CIE _{Lab}	57.77, 51.69, 9.22
CIE _{LCh}	58, 52.504, 10.117
Yxy	25.7180, 0.4442, 0.2974
Android (android.graphics.Color)	4292829565 (0xFFDF617D)
YUV	137.8660, -6.3429, 74.6625
Hunter-Lab	50.7129, 46.4405, 9.3786

Details

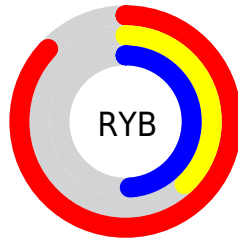
The Hex color **DF617D** is a dark color, and the websafe version is hex **FF6699**. A complement of this color would be **61DFC3**, and the grayscale version is **8A8A8A**.

A 20% lighter version of the original color is **FF98B1**, and **A3294C** is the 20% darker color. If you saturate the color by 10%, you get **DF4B6C**, and if you desaturate by 10%, it is **DF778E**.

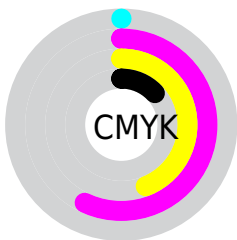
Distribution



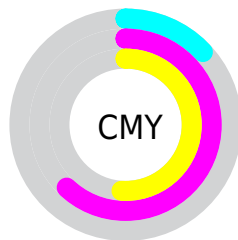
- Red (87%)
- Green (38%)
- Blue (49%)



- Red (87%)
- Yellow (38%)
- Blue (49%)



- Cyan (0%)
- Magenta (57%)
- Yellow (44%)
- Black (13%)



- Cyan (13%)
- Magenta (62%)
- Yellow (51%)

Brightness & Saturation Gradients

These gradients show how the Hex color DF617D changes by changing the brightness by 10 percent. The first figure shows a shift by +10% for each color and the second figure -10%.

Similar to the brightness gradients but the following saturation gradients show a change of the Hex color DF617D by changing the saturation by 10% instead.

 DF617D

 DF617D

FFFFFF

 C14664

 FF98B1

 A3294C

 FFB4CD

 860036

 FFD0E9

 6A0021

 FFEDFF

 4E0009

 340002

 000000

 DF617D

 DF617D

 DF4B6C

 DF778E

 DF345A

 DF8EA0

 DF1E49

 DFA4B1

 DF0838

 DFBAC2

 DF0032

 DFD1D4

 DFE7E5

 DFFDF6

 DFFFFFF

Harmonies

Analogous

The Analogous color harmony consists of three colors that are next to each other on the color wheel.



CE67AB



DF617D



D76C52

Triad

The Triadic color harmony groups three colors that are evenly spaced from another and form a triangle on the color wheel.



DF617D



639941



0098E1

Complementary

The Complementary color scheme is a pair of colors which are on the opposite of each other on the color wheel.



DF617D



61DFC3

Split Complementary

Split-complementary colors differ from the complementary color scheme. The scheme consists of three colors, the original color and two neighbors of the complement color.



009FC5



DF617D



009F6A

Square

The Square scheme is like the rectangle color scheme, but the four colors are evenly spaced on the color wheel.



DF617D



958D29



00A199



508BE5

Rectangle

The Rectangle color scheme consists of four colors that form a rectangle on the color wheel.



DF617D



C7773B



00A199



009BDA

Sweetspot

The Sweet Spot groups the original color and five complimentary colors.



DF617D



FFD4DD



C261DF



80666C



000000



808080

Same Dimension

The Same Dimension uses a secret algorithm to generate beautiful new colors.



DF617D



FF5278



DF8361



706567



B00027



30000B

Inverse Universe

The Inverse Universe completely reimagines the original color for something new.



DF617D



FF5278



61BDDF



706567



B00027



30000B

Previews

White Background



This preview shows how the Hex color DF617D looks on a white background.

Color Contrast Check

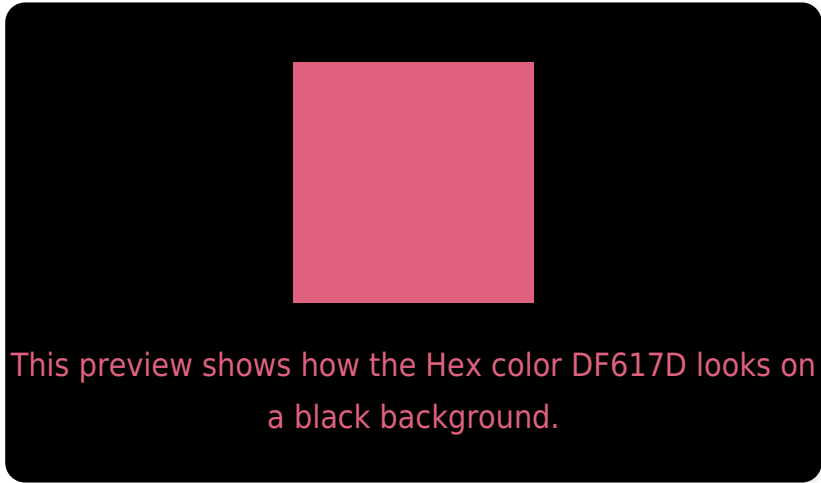
Large Text (above 18pt) WCAG AA ✓ Pass

Any Text WCAG AA × Fail

Large Text (above 18pt) WCAG AAA × Fail

Any Text WCAG AAA × Fail

Black Background



Color Contrast Check

Large Text (above 18pt) WCAG AA ✓ Pass

Any Text WCAG AA ✓ Pass

Large Text (above 18pt) WCAG AAA ✓ Pass

Any Text WCAG AAA × Fail

If you want to check with other color combinations, try the [Color Contrast Checker](#).

Hex DF617D Background



This preview shows how black text looks on a background with the Hex color DF617D.




This preview shows how white text looks on a background with the Hex color DF617D.

Color Blindness Simulation

Color vision deficiency is a very complex topic, and I could not describe the different causes any better than Wikipedia does, so if you want to learn more, you should check out their [article about color blindness](#).

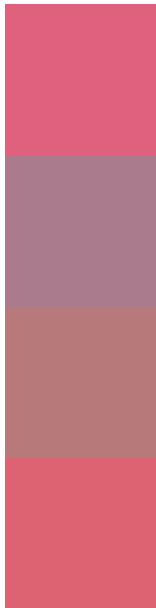
Dichromacy





Tritanopia
DE646B

Trichromacy



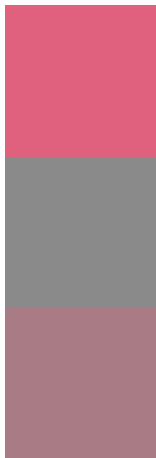
Original Color
DF617D

Protanomaly
AA7B8C

Deuteranomaly
B77979

Tritanomaly
DE6372

Monochromacy



Original Color
DF617D

Achromatopsia
8A8A8A

Achromatomaly
A97B85

CSS Examples

Text

The CSS property to change the color of the text to Hex DF617D is called "color". The color property can be set on classes, ids or directly on the HTML element.

This example shows how text in the color #DF617D looks like.

```
.text, #text, p{  
    color:#DF617D  
}
```

If you want to add a text shadow in that color use the text-shadow property, you can generate a text shadow directly with our [CSS Text Shadow Generator](#).

Here you see how black text with a 4 pixel #DF617D colored shadow looks like.

```
.shadow{ text-shadow: 4px 4px 2px #DF617D
}
```

Border

The CSS property to change the border of an element to Hex DF617D is called "border". The border property can be set on classes, ids or directly on the HTML element.

This example shows the color as border, it can be applied via the CSS property "border" or "border-color".

```
.border, #border, table{ border:4px solid
#DF617D }
```

If only the border color should be changed use the property `border-color`.

```
.border{ border-color:#DF617D }
```

If you want to add a box shadow in that color use:

Here you see how a box with a 4 pixel #DF617D colored shadow looks like.

```
.boxshadow{ -moz-box-shadow:4px 4px 4px  
4px #DF617D; -webkit-box-shadow:4px 4px  
4px 4px #DF617D; box-shadow:4px 4px 4px  
4px #DF617D }
```

Background

The CSS property to change the background color of an element to Hex DF617D is called "background". The background property can be set on classes, ids or directly on the HTML element.

```
.background, #background, body{  
background:#DF617D }
```

If only the background color should be changed can be used:

```
.background{ background-color:#DF617D }
```

This example shows the color as background, it is applied via the CSS property "background".

To optimize and compress your CSS code, you can use our [online CSS compressor and optimizer](#) based on csstidy. If you want to create a linear or radial gradient as background or border, check our [CSS Gradient Generator](#).

Hey! You found this booklet interesting? Support Converting Colors with the new Membership Option!

The pro membership hides all ads, plus gives you double the colors in the color bucket, and more awesome pro features!

[Learn more, Memberships starting at \\$2.50/m!](#)

**Follow me
on Twitter!**

@ConvertingColor