

Converting Colors

Hex(DF8C9E)

Have a look what the booklet for
Hex(DF8C9E) contains.

Hex(DF8C9E)	3
<i>Conversions</i>	4
<i>Details</i>	6
<i>Harmonies</i>	11
<i>Previews</i>	23
<i>Color Blindness Simulation</i>	26
<i>CSS Examples</i>	29

Color

Hex(DF8C9E)

Conversions

Conversions Part 1

Format	Color
Hex	DF8C9E
RGB	223, 140, 158
RGB Percent	87%, 55%, 62%
CMY	0.1255, 0.4510, 0.3804
CMYK	0.00, 0.37, 0.29, 0.13
HSL	347°, 56%, 71%
HSV	347°, 37%, 87%
XYZ	45.9811, 36.9128, 37.0492
YIQ	166.8690, 43.6900, 23.1940

Conversions

Conversions Part 2

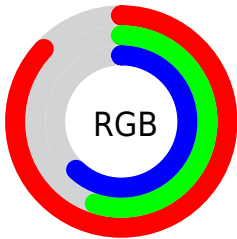
Format	Color
RYB	223, 140, 158
Decimal	14650526
CIELab	67.21, 33.84, 3.84
CIElCh	67, 34.056, 6.476
Yxy	36.9128, 0.3834, 0.3078
Android (android.graphics.Color)	4292840606 (0xFFDF8C9E)
YUV	166.8690, -4.3724, 49.2269
Hunter-Lab	60.7559, 28.7690, 6.3738

Details

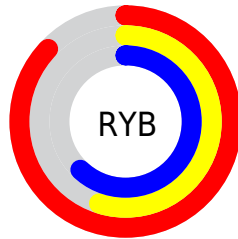
The Hex color **DF8C9E** is a light color, and the websafe version is hex **FF9999**. A complement of this color would be **8CDFCD**, and the grayscale version is **A7A7A7**.

A 20% lighter version of the original color is **FFC3D5**, and **A6586B** is the 20% darker color. If you saturate the color by 10%, you get **DF768D**, and if you desaturate by 10%, it is **DFA2AF**.

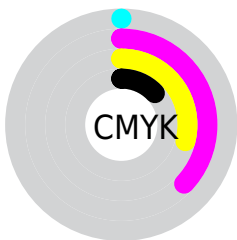
Distribution



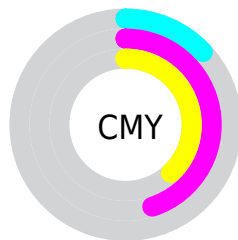
- Red (87%)
- Green (55%)
- Blue (62%)



- Red (87%)
- Yellow (55%)
- Blue (62%)



- Cyan (0%)
- Magenta (37%)
- Yellow (29%)
- Black (13%)



- Cyan (13%)
- Magenta (45%)
- Yellow (38%)

Brightness & Saturation Gradients

These gradients show how the Hex color DF8C9E changes by changing the brightness by 10 percent. The first figure shows a shift by +10% for each color and the second figure -10%.

Similar to the brightness gradients but the following saturation gradients show a change of the Hex color DF8C9E by changing the saturation by 10% instead.

 DF8C9E

 DF8C9E

FFFFFF

 C27284

 FFC3D5

 A6586B

 FFDFF1

 8A4053

 FFFCFF

 6F273C

 550D26

 3B0011

 240001

 000000

 DF8C9E

 DF8C9E

 DF768D

 DFA2AF

 DF5F7B

 DFB9C1

 DF496A

 DF CFD2

 DF3358

 DFE5E4

 DF1D47

 DFFCF5

 DF0635

 DFFFFFF

 DF0030

Harmonies

Analogous

The Analogous color harmony consists of three colors that are next to each other on the color wheel.



D090BD



DF8C9E



DD9081

Triad

The Triadic color harmony groups three colors that are evenly spaced from another and form a triangle on the color wheel.



DF8C9E



91AD71



51ADDB

Complementary

The Complementary color scheme is a pair of colors which are on the opposite of each other on the color wheel.



DF8C9E



8CDFCD

Split Complementary

Split-complementary colors differ from the complementary color scheme. The scheme consists of three colors, the original color and two neighbors of the complement color.



31B3C7



DF8C9E



6CB28A

Square

The Square scheme is like the rectangle color scheme, but the four colors are evenly spaced on the color wheel.



DF8C9E



B2A466



45B4A9



83A4E0

Rectangle

The Rectangle color scheme consists of four colors that form a rectangle on the color wheel.



DF8C9E



D39672



45B4A9



43B0D6

Sweetspot

The Sweet Spot groups the original color and five complimentary colors.



DF8C9E



FFE3E9



CC8CDF



806F73



000000



808080

Same Dimension

The Same Dimension uses a secret algorithm to generate beautiful new colors.



DF8C9E



FF8CA5



DFA28C



706567



B00026



30000B

Inverse Universe

The Inverse Universe completely reimagines the original color for something new.



DF8C9E



FF8CA5



8CC9DF



706567



B00026



30000B

Previews

White Background



This preview shows how the Hex color DF8C9E looks on a white background.

Color Contrast Check

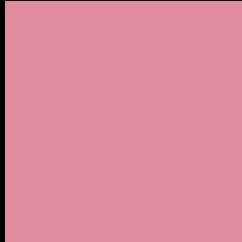
Large Text (above 18pt) WCAG AA × Fail

Any Text WCAG AA × Fail

Large Text (above 18pt) WCAG AAA × Fail

Any Text WCAG AAA × Fail

Black Background



This preview shows how the Hex color DF8C9E looks on a black background.

Color Contrast Check

Large Text (above 18pt) WCAG AA ✓ Pass

Any Text WCAG AA ✓ Pass

Large Text (above 18pt) WCAG AAA ✓ Pass

Any Text WCAG AAA ✓ Pass

If you want to check with other color combinations, try the [Color Contrast Checker](#).

Hex DF8C9E Background



This preview shows how black text looks on a background with the Hex color DF8C9E.

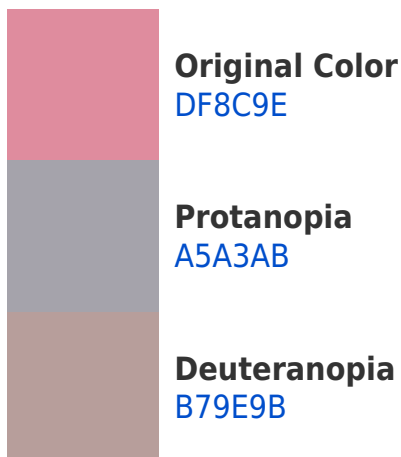



This preview shows how white text looks on a background with the Hex color DF8C9E.

Color Blindness Simulation

Color vision deficiency is a very complex topic, and I could not describe the different causes any better than Wikipedia does, so if you want to learn more, you should check out their [article about color blindness](#).

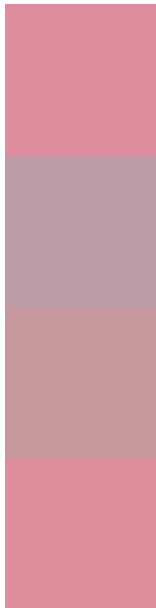
Dichromacy





Tritanopia
DE8D98

Trichromacy



Original Color
DF8C9E

Protanomaly
BA9BA6

Deuteranomaly
C6979C

Tritanomaly
DE8D9A

Monochromacy



Original Color
DF8C9E

Achromatopsia
A7A7A7

Achromatomaly
BB9DA4

CSS Examples

Text

The CSS property to change the color of the text to Hex DF8C9E is called "color". The color property can be set on classes, ids or directly on the HTML element.

This example shows how text in the color #DF8C9E looks like.

```
.text, #text, p{  
    color:#DF8C9E  
}
```

If you want to add a text shadow in that color use the text-shadow property, you can generate a text shadow directly with our [CSS Text Shadow Generator](#).

Here you see how black text with a 4 pixel #DF8C9E colored shadow looks like.

```
.shadow{ text-shadow: 4px 4px 2px #DF8C9E
}
```

Border

The CSS property to change the border of an element to Hex DF8C9E is called "border". The border property can be set on classes, ids or directly on the HTML element.

This example shows the color as border, it can be applied via the CSS property "border" or "border-color".

```
.border, #border, table{ border:4px solid
#DF8C9E }
```

If only the border color should be changed use the property `border-color`.

```
.border{ border-color:#DF8C9E }
```

If you want to add a box shadow in that color use:

Here you see how a box with a 4 pixel #DF8C9E colored shadow looks like.

```
.boxshadow{ -moz-box-shadow:4px 4px 4px  
4px #DF8C9E; -webkit-box-shadow:4px 4px  
4px 4px #DF8C9E; box-shadow:4px 4px 4px  
4px #DF8C9E }
```

Background

The CSS property to change the background color of an element to Hex DF8C9E is called "background". The background property can be set on classes, ids or directly on the HTML element.

```
.background, #background, body{  
background:#DF8C9E }
```

If only the background color should be changed can be used:

```
.background{ background-color:#DF8C9E }
```

This example shows the color as background, it is applied via the CSS property "background".

To optimize and compress your CSS code, you can use our [online CSS compressor and optimizer](#) based on csstidy. If you want to create a linear or radial gradient as background or border, check our [CSS Gradient Generator](#).

Hey! You found this booklet interesting? Support Converting Colors with the new Membership Option!

The pro membership hides all ads, plus gives you double the colors in the color bucket, and more awesome pro features!

[Learn more, Memberships starting at \\$2.50/m!](#)

**Follow me
on Twitter!**

@ConvertingColor