

Converting Colors

Hex(DF9EAE)

Have a look what the booklet for
Hex(DF9EAE) contains.

Hex(DF9EAE)	3
<i>Conversions</i>	4
<i>Details</i>	6
<i>Harmonies</i>	11
<i>Previews</i>	23
<i>Color Blindness Simulation</i>	26
<i>CSS Examples</i>	29

Color

Hex(DF9EAE)

Conversions

Conversions Part 1

Format	Color
Hex	DF9EAE
RGB	223, 158, 174
RGB Percent	87%, 62%, 68%
CMY	0.1255, 0.3804, 0.3176
CMYK	0.00, 0.29, 0.22, 0.13
HSL	345°, 50%, 75%
HSV	345°, 29%, 87%
XYZ	50.2983, 43.1977, 45.7314
YIQ	179.2590, 33.6040, 18.7560

Conversions

Conversions Part 2

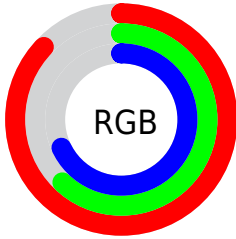
Format	Color
R_{YB}	223, 158, 174
Decimal	14655150
CIE _{Lab}	71.69, 26.46, 1.41
CIE _{LCh}	72, 26.496, 3.050
Yxy	43.1977, 0.3613, 0.3103
Android (android.graphics.Color)	4292845230 (0xFFDF9EAE)
YUV	179.2590, -2.5927, 38.3609
Hunter-Lab	65.7249, 21.5846, 4.7535

Details

The Hex color **DF9EAE** is a light color, and the websafe version is hex **CC9999**. A complement of this color would be **9EDFCF**, and the grayscale version is **B3B3B3**.

A 20% lighter version of the original color is **FFD5E5**, and **A76A7A** is the 20% darker color. If you saturate the color by 10%, you get **DF889D**, and if you desaturate by 10%, it is **DFB4BF**.

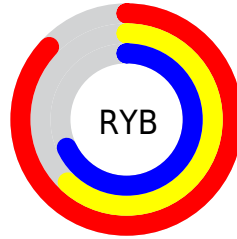
Distribution



Red (87%)

Green (62%)

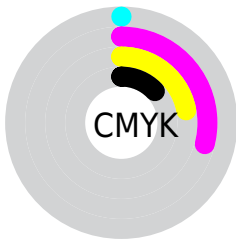
Blue (68%)



Red (87%)

Yellow (62%)

Blue (68%)

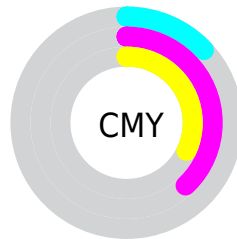


Cyan (0%)

Magenta (29%)

Yellow (22%)

Black (13%)



Cyan (13%)

Magenta (38%)

Yellow (32%)

Brightness & Saturation Gradients

These gradients show how the Hex color DF9EAE changes by changing the brightness by 10 percent. The first figure shows a shift by +10% for each color and the second figure -10%.

Similar to the brightness gradients but the following saturation gradients show a change of the Hex color DF9EAE by changing the saturation by 10% instead.

 DF9EAE

 DF9EAE

FFFFFF


 C38493

 FFD5E5

 A76A7A

 FFF2FF

 8B5161

 713949

 572233

 3E0B1E

 2A0004

 000000

 DF9EAE

 DF9EAE

 DF889D

 DFB4BF

 DF718C

 DFCBD0

 DF5B7C

 DFE1E0

 DF456B

 DFF7F1

 DF2E5A

 DFFFFFF

 DF1849

 DF0238

 DF0037

Harmonies

Analogous

The Analogous color harmony consists of three colors that are next to each other on the color wheel.



D1A1C6



DF9EAE



DFA096

Triad

The Triadic color harmony groups three colors that are evenly spaced from another and form a triangle on the color wheel.



DF9EAE



A5B687



76B8DA

Complementary

The Complementary color scheme is a pair of colors which are on the opposite of each other on the color wheel.



DF9EAE



9EDFCF

Split Complementary

Split-complementary colors differ from the complementary color scheme. The scheme consists of three colors, the original color and two neighbors of the complement color.



68BCC9



DF9EAE



89BB99

Square

The Square scheme is like the rectangle color scheme, but the four colors are evenly spaced on the color wheel.



DF9EAE



BFAF7F



71BDB1



95B1DF

Rectangle

The Rectangle color scheme consists of four colors that form a rectangle on the color wheel.



DF9EAE



D9A48A



71BDB1



6FBAD5

Sweetspot

The Sweet Spot groups the original color and five complimentary colors.



DF9EAE



FFE8EE



CF9EDF



807175



000000



808080

Same Dimension

The Same Dimension uses a secret algorithm to generate beautiful new colors.



DF9EAE



FFA6BC



DFAE9E



706568



B0002B



30000C

Inverse Universe

The Inverse Universe completely reimagines the original color for something new.



DF9EAE



FFA6BC



9ECFDF



706568



B0002B



30000C

Previews

White Background



This preview shows how the Hex color DF9EAE looks on a white background.

Color Contrast Check

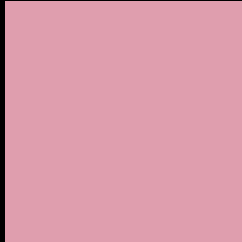
Large Text (above 18pt) WCAG AA × Fail

Any Text WCAG AA × Fail

Large Text (above 18pt) WCAG AAA × Fail

Any Text WCAG AAA × Fail

Black Background



This preview shows how the Hex color DF9EAE looks on a black background.

Color Contrast Check

Large Text (above 18pt) WCAG AA ✓ Pass

Any Text WCAG AA ✓ Pass

Large Text (above 18pt) WCAG AAA ✓ Pass

Any Text WCAG AAA ✓ Pass

If you want to check with other color combinations, try the [Color Contrast Checker](#).

Hex DF9EAE Background



This preview shows how black text looks on a background with the Hex color DF9EAE.

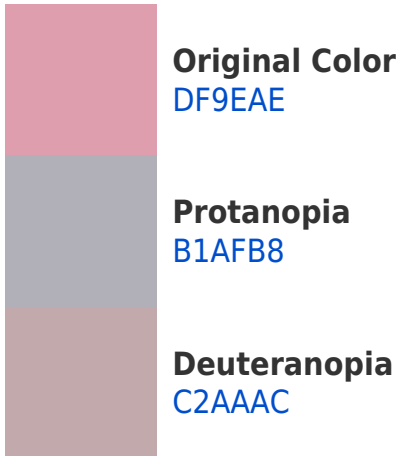


This preview shows how white text looks on a background with the Hex color DF9EAE.

Color Blindness Simulation

Color vision deficiency is a very complex topic, and I could not describe the different causes any better than Wikipedia does, so if you want to learn more, you should check out their [article about color blindness](#).

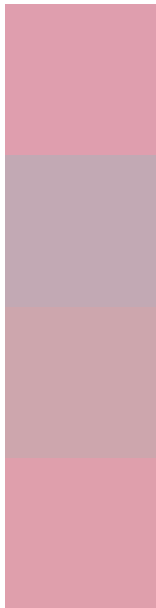
Dichromacy





Tritanopia
DF9FAB

Trichromacy



Original Color
DF9EAE

Protanomaly
C2A9B4

Deuteranomaly
CDA6AD

Tritanomaly
DF9FAC

Monochromacy



Original Color
DF9EAE

Achromatopsia
B3B3B3

Achromatomaly
C3ABB1

CSS Examples

Text

The CSS property to change the color of the text to Hex DF9EAE is called "color". The color property can be set on classes, ids or directly on the HTML element.

This example shows how text in the color #DF9EAE looks like.

```
.text, #text, p{  
    color:#DF9EAE  
}
```

If you want to add a text shadow in that color use the text-shadow property, you can generate a text shadow directly with our [CSS Text Shadow Generator](#).

Here you see how black text with a 4 pixel #DF9EAE colored shadow looks like.

```
.shadow{ text-shadow: 4px 4px 2px #DF9EAE
}
```

Border

The CSS property to change the border of an element to Hex DF9EAE is called "border". The border property can be set on classes, ids or directly on the HTML element.

This example shows the color as border, it can be applied via the CSS property "border" or "border-color".

```
.border, #border, table{ border:4px solid
#DF9EAE }
```

If only the border color should be changed use the property `border-color`.

```
.border{ border-color:#DF9EAE }
```

If you want to add a box shadow in that color use:

Here you see how a box with a 4 pixel #DF9EAE colored shadow looks like.

```
.boxshadow{ -moz-box-shadow:4px 4px 4px  
4px #DF9EAE; -webkit-box-shadow:4px 4px  
4px 4px #DF9EAE; box-shadow:4px 4px 4px  
4px #DF9EAE }
```

Background

The CSS property to change the background color of an element to Hex DF9EAE is called "background". The background property can be set on classes, ids or directly on the HTML element.

```
.background, #background, body{  
background:#DF9EAE }
```

If only the background color should be changed can be used:

```
.background{ background-color:#DF9EAE }
```

This example shows the color as background, it is applied via the CSS property "background".

To optimize and compress your CSS code, you can use our [online CSS compressor and optimizer](#) based on csstidy. If you want to create a linear or radial gradient as background or border, check our [CSS Gradient Generator](#).

Hey! You found this booklet interesting? Support Converting Colors with the new Membership Option!

The pro membership hides all ads, plus gives you double the colors in the color bucket, and more awesome pro features!

[Learn more, Memberships starting at \\$2.50/m!](#)

**Follow me
on Twitter!**

@ConvertingColor