

# Converting Colors

Hex(DFA1AE)

Have a look what the booklet for  
Hex(DFA1AE) contains.

<b>Hex(DFA1AE)</b> .....	3
<b><i>Conversions</i></b> .....	4
<b><i>Details</i></b> .....	6
<b><i>Harmonies</i></b> .....	11
<b><i>Previews</i></b> .....	23
<b><i>Color Blindness Simulation</i></b> .....	26
<b><i>CSS Examples</i></b> .....	29

# **Color**

**Hex(DFA1AE)**

# Conversions

## Conversions Part 1

Format	Color
Hex	DFA1AE
RGB	223, 161, 174
RGB Percent	87%, 63%, 68%
CMY	0.1255, 0.3686, 0.3176
CMYK	0.00, 0.28, 0.22, 0.13
HSL	347°, 49%, 75%
HSV	347°, 28%, 87%
XYZ	50.8163, 44.2337, 45.9040
YIQ	181.0200, 32.7790, 17.1870

# Conversions

## Conversions Part 2

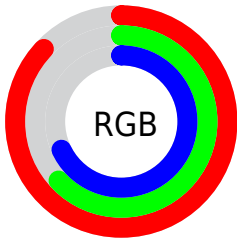
Format	Color
R <sub>YB</sub>	223, 161, 174
Decimal	14655918
CIE Lab	72.38, 24.84, 2.42
CIE LCh	72, 24.962, 5.565
Yxy	44.2337, 0.3605, 0.3138
Android (android.graphics.Color)	4292845998 (0xFFDFA1AE)
YUV	181.0200, -3.4609, 36.8165
Hunter-Lab	66.5084, 19.9946, 5.6340

# Details

The Hex color **DFA1AE** is a light color, and the websafe version is hex **CC9999**. A complement of this color would be **A1DFD2**, and the grayscale version is **B5B5B5**.

A 20% lighter version of the original color is **FFD8E5**, and **A76D7A** is the 20% darker color. If you saturate the color by 10%, you get **DF8B9C**, and if you desaturate by 10%, it is **DFB7C0**.

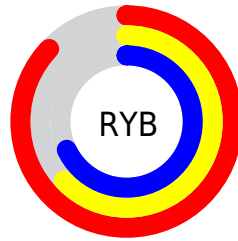
# Distribution



Red (87%)

Green (63%)

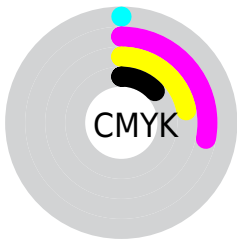
Blue (68%)



Red (87%)

Yellow (63%)

Blue (68%)

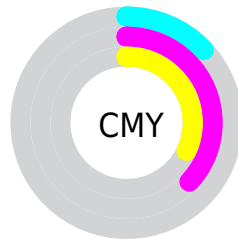


Cyan (0%)

Magenta (28%)

Yellow (22%)

Black (13%)



Cyan (13%)

Magenta (37%)

Yellow (32%)

# Brightness & Saturation Gradients

These gradients show how the Hex color DFA1AE changes by changing the brightness by 10 percent. The first figure shows a shift by +10% for each color and the second figure -10%.

Similar to the brightness gradients but the following saturation gradients show a change of the Hex color DFA1AE by changing the saturation by 10% instead.



 DFA1AE

 DFA1AE

FFFFFF

 C38793

 FFD8E5

 A76D7A

 FFF5FF

 8C5461

 713C49

 582533

 3F0E1E

 2A0004

 000000

 DFA1AE

 DFA1AE

 DF8B9C

 DFB7C0

 DF748B

 DFCED1

 DF5E79

 DFE4E3

 DF4868

 DFFAF4

 DF3156

 DFFFFFF

 DF1B44

 DF0533

 DF002F

# Harmonies

## Analogous

The Analogous color harmony consists of three colors that are next to each other on the color wheel.



D3A4C5



DFA1AE



DFA398

# Triad

The Triadic color harmony groups three colors that are evenly spaced from another and form a triangle on the color wheel.



DFA1AE



A5B88C



7EB9DA

# Complementary

The Complementary color scheme is a pair of colors which are on the opposite of each other on the color wheel.



DFA1AE



A1DFD2

# Split Complementary

Split-complementary colors differ from the complementary color scheme. The scheme consists of three colors, the original color and two neighbors of the complement color.



70BDCB



DFA1AE



8BBD9E

# Square

The Square scheme is like the rectangle color scheme, but the four colors are evenly spaced on the color wheel.



DFA1AE



BEB184



76BEB5



9CB2DF

# Rectangle

The Rectangle color scheme consists of four colors that form a rectangle on the color wheel.



DFA1AE



D8A78D



76BEB5



77BBD6



# Sweetspot

The Sweet Spot groups the original color and five complimentary colors.



DFA1AE



FFEBEF



D2A1DF



807375



000000



808080



# Same Dimension

The Same Dimension uses a secret algorithm to generate beautiful new colors.



DFA1AE



FFABBC



DFB3A1



706567



B00025



30000A



# Inverse Universe

The Inverse Universe completely reimagines the original color for something new.



DFA1AE



FFABBC



A1CDDF



706567



B00025



30000A



# Previews

## White Background



This preview shows how the Hex color DFA1AE looks on a white background.

## Color Contrast Check

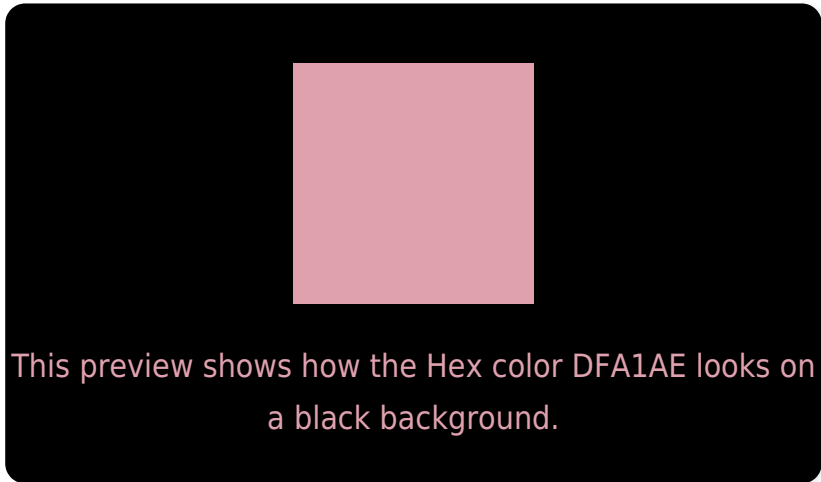
Large Text (above 18pt) WCAG AA × Fail

Any Text WCAG AA × Fail

Large Text (above 18pt) WCAG AAA × Fail

Any Text WCAG AAA × Fail

# Black Background



## Color Contrast Check

Large Text (above 18pt) WCAG AA ✓ Pass

Any Text WCAG AA ✓ Pass

Large Text (above 18pt) WCAG AAA ✓ Pass

Any Text WCAG AAA ✓ Pass

If you want to check with other color combinations, try the [Color Contrast Checker](#).



## Hex DFA1AE Background



This preview shows how black text looks on a background with the Hex color DFA1AE.

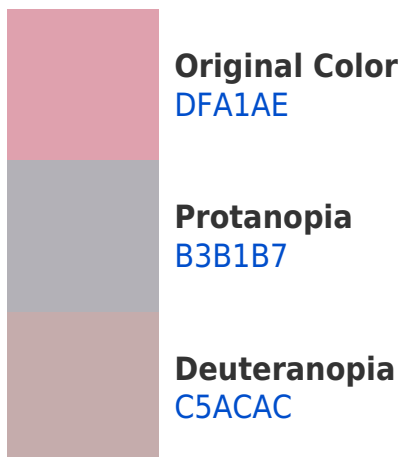


This preview shows how white text looks on a background with the Hex color DFA1AE.

# Color Blindness Simulation

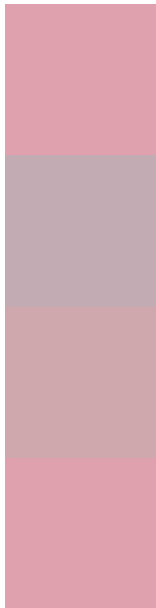
Color vision deficiency is a very complex topic, and I could not describe the different causes any better than Wikipedia does, so if you want to learn more, you should check out their [article about color blindness](#).

## Dichromacy





# Trichromacy



**Original Color**  
DFA1AE

**Protanomaly**  
C3ABB4

**Deuteranomaly**  
CEA8AD

**Tritanomaly**  
DFA1AD

# Monochromacy



**Original Color**  
DFA1AE

**Achromatopsia**  
B5B5B5

**Achromatomaly**  
C4AEB2

# CSS Examples

## Text

The CSS property to change the color of the text to Hex DFA1AE is called "color". The color property can be set on classes, ids or directly on the HTML element.

This example shows how text in the color #DFA1AE looks like.

```
.text, #text, p{  
    color:#DFA1AE  
}
```

If you want to add a text shadow in that color use the text-shadow property, you can generate a text shadow directly with our [CSS Text Shadow Generator](#).

Here you see how black text with a 4 pixel #DFA1AE colored shadow looks like.

```
.shadow{ text-shadow: 4px 4px 2px #DFA1AE
}
```

## Border

The CSS property to change the border of an element to Hex DFA1AE is called "border". The border property can be set on classes, ids or directly on the HTML element.

This example shows the color as border, it can be applied via the CSS property "border" or "border-color".

```
.border, #border, table{ border:4px solid
#DFA1AE }
```

If only the border color should be changed use the property `border-color`.

```
.border{ border-color:#DFA1AE }
```

If you want to add a box shadow in that color use:

Here you see how a box with a 4 pixel #DFA1AE colored shadow looks like.

```
.boxshadow{ -moz-box-shadow:4px 4px 4px  
4px #DFA1AE; -webkit-box-shadow:4px 4px  
4px 4px #DFA1AE; box-shadow:4px 4px 4px  
4px #DFA1AE }
```

# Background

The CSS property to change the background color of an element to Hex DFA1AE is called "background". The background property can be set on classes, ids or directly on the HTML element.

```
.background, #background, body{  
background:#DFA1AE }
```

If only the background color should be changed can be used:

```
.background{ background-color:#DFA1AE }
```

This example shows the color as background, it is applied via the CSS property "background".

To optimize and compress your CSS code, you can use our [online CSS compressor and optimizer](#) based on csstidy. If you want to create a linear or radial gradient as background or border, check our [CSS Gradient Generator](#).



Hey! You found this booklet interesting? Support Converting Colors with the new Membership Option!

The pro membership hides all ads, plus gives you double the colors in the color bucket, and more awesome pro features!

**[Learn more, Memberships starting at \\$2.50/m!](#)**

**Follow me  
on Twitter!**

@ConvertingColor