

Converting Colors

Hex(DFA4B4)

Have a look what the booklet for
Hex(DFA4B4) contains.

Hex(DFA4B4)	3
<i>Conversions</i>	4
<i>Details</i>	6
<i>Harmonies</i>	11
<i>Previews</i>	23
<i>Color Blindness Simulation</i>	26
<i>CSS Examples</i>	29

Color

Hex(DFA4B4)

Conversions

Conversions Part 1

Format	Color
Hex	DFA4B4
RGB	223, 164, 180
RGB Percent	87%, 64%, 71%
CMY	0.1255, 0.3569, 0.2941
CMYK	0.00, 0.26, 0.19, 0.13
HSL	344°, 48%, 76%
HSV	344°, 26%, 87%
XYZ	51.9451, 45.5342, 49.2312
YIQ	183.4650, 30.0280, 17.4840

Conversions

Conversions Part 2

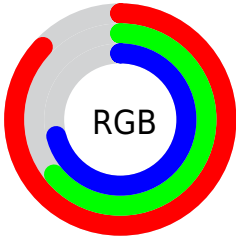
Format	Color
R _Y B	223, 164, 180
Decimal	14656692
CIE Lab	73.24, 24.13, 0.36
CIE LCh	73, 24.133, 0.856
Yxy	45.5342, 0.3541, 0.3104
Android (android.graphics.Color)	4292846772 (0xFFDFA4B4)
YUV	183.4650, -1.7082, 34.6722
Hunter-Lab	67.4790, 19.3204, 3.9787

Details

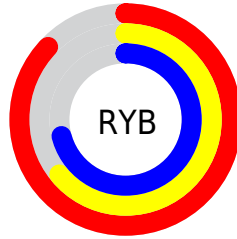
The Hex color **DFA4B4** is a light color, and the websafe version is hex **CC9999**. A complement of this color would be **A4DFCF**, and the grayscale version is **B7B7B7**.

A 20% lighter version of the original color is **FFDBEC**, and **A7707F** is the 20% darker color. If you saturate the color by 10%, you get **DF8EA4**, and if you desaturate by 10%, it is **DFBAC4**.

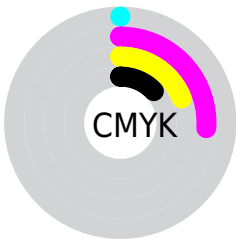
Distribution



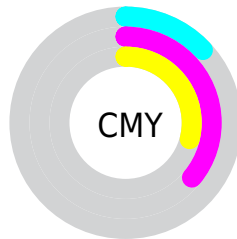
- Red (87%)
- Green (64%)
- Blue (71%)



- Red (87%)
- Yellow (64%)
- Blue (71%)



- Cyan (0%)
- Magenta (26%)
- Yellow (19%)
- Black (13%)



- Cyan (13%)
- Magenta (36%)
- Yellow (29%)

Brightness & Saturation Gradients

These gradients show how the Hex color DFA4B4 changes by changing the brightness by 10 percent. The first figure shows a shift by +10% for each color and the second figure -10%.

Similar to the brightness gradients but the following saturation gradients show a change of the Hex color DFA4B4 by changing the saturation by 10% instead.

 DFA4B4

 DFA4B4

FFFFFF

 C38999

 FFDBEC

 A7707F

 FFF8FF

 8C5766

 723F4E

 582838

 3F1122

 2A000C

 000000

 DFA4B4

 DFA4B4

 DF8EA4

 DFBAC4

 DF7793

 DFD1D5

 DF6183

 DFE7E5

 DF4B73

 DFFDF5

 DF3563

 DFFFFF

 DF1E52

 DF0842

 DF003C

Harmonies

Analogous

The Analogous color harmony consists of three colors that are next to each other on the color wheel.



D1A7CA



DFA4B4



E1A69E

Triad

The Triadic color harmony groups three colors that are evenly spaced from another and form a triangle on the color wheel.



DFA4B4



ACB98E



80BCDA

Complementary

The Complementary color scheme is a pair of colors which are on the opposite of each other on the color wheel.



DFA4B4



A4DFCF

Split Complementary

Split-complementary colors differ from the complementary color scheme. The scheme consists of three colors, the original color and two neighbors of the complement color.



74C0CA



DFA4B4



93BE9E

Square

The Square scheme is like the rectangle color scheme, but the four colors are evenly spaced on the color wheel.



DFA4B4



C4B388



7DC0B4



9AB6E0

Rectangle

The Rectangle color scheme consists of four colors that form a rectangle on the color wheel.



DFA4B4



DBA992



7DC0B4



7ABDD5

Sweetspot

The Sweet Spot groups the original color and five complimentary colors.



DFA4B4



FFEBF0



CEA4DF



807376



000000



808080

Same Dimension

The Same Dimension uses a secret algorithm to generate beautiful new colors.



DFA4B4



FFADC4



DFB1A4



706568



B00030



30000D

Inverse Universe

The Inverse Universe completely reimagines the original color for something new.



DFA4B4



FFADC4



A4D2DF



706568



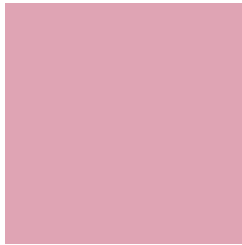
B00030



30000D

Previews

White Background



This preview shows how the Hex color DFA4B4 looks on a white background.

Color Contrast Check

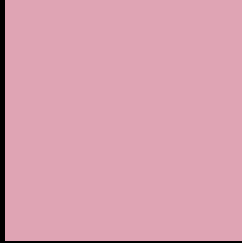
Large Text (above 18pt) WCAG AA × Fail

Any Text WCAG AA × Fail

Large Text (above 18pt) WCAG AAA × Fail

Any Text WCAG AAA × Fail

Black Background



This preview shows how the Hex color DFA4B4 looks on a black background.

Color Contrast Check

Large Text (above 18pt) WCAG AA ✓ Pass

Any Text WCAG AA ✓ Pass

Large Text (above 18pt) WCAG AAA ✓ Pass

Any Text WCAG AAA ✓ Pass

If you want to check with other color combinations, try the [Color Contrast Checker](#).

Hex DFA4B4 Background



This preview shows how black text looks on a background with the Hex color DFA4B4.

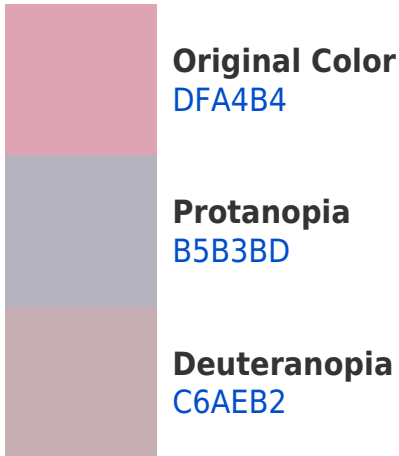


This preview shows how white text looks on a background with the Hex color DFA4B4.

Color Blindness Simulation

Color vision deficiency is a very complex topic, and I could not describe the different causes any better than Wikipedia does, so if you want to learn more, you should check out their [article about color blindness](#).

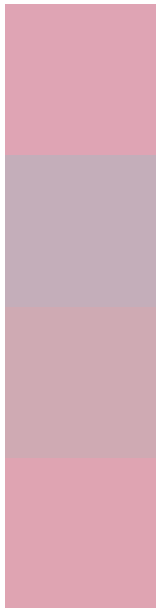
Dichromacy





Tritanopia
DFA4B1

Trichromacy



Original Color
DFA4B4

Protanomaly
C4AEBA

Deuteranomaly
CFAAB3

Tritanomaly
DFA4B2

Monochromacy



Original Color
DFA4B4

Achromatopsia
B7B7B7

Achromatomaly
C6B0B6

CSS Examples

Text

The CSS property to change the color of the text to Hex DFA4B4 is called "color". The color property can be set on classes, ids or directly on the HTML element.

This example shows how text in the color #DFA4B4 looks like.

```
.text, #text, p{  
    color:#DFA4B4  
}
```

If you want to add a text shadow in that color use the text-shadow property, you can generate a text shadow directly with our [CSS Text Shadow Generator](#).

Here you see how black text with a 4 pixel #DFA4B4 colored shadow looks like.

```
.shadow{ text-shadow: 4px 4px 2px #DFA4B4
}
```

Border

The CSS property to change the border of an element to Hex DFA4B4 is called "border". The border property can be set on classes, ids or directly on the HTML element.

This example shows the color as border, it can be applied via the CSS property "border" or "border-color".

```
.border, #border, table{ border:4px solid
#DFA4B4 }
```

If only the border color should be changed use the property `border-color`.

```
.border{ border-color:#DFA4B4 }
```

If you want to add a box shadow in that color use:

Here you see how a box with a 4 pixel #DFA4B4 colored shadow looks like.

```
.boxshadow{ -moz-box-shadow:4px 4px 4px  
4px #DFA4B4; -webkit-box-shadow:4px 4px  
4px 4px #DFA4B4; box-shadow:4px 4px 4px  
4px #DFA4B4 }
```

Background

The CSS property to change the background color of an element to Hex DFA4B4 is called "background". The background property can be set on classes, ids or directly on the HTML element.

```
.background, #background, body{  
background:#DFA4B4 }
```

If only the background color should be changed can be used:

```
.background{ background-color:#DFA4B4 }
```

This example shows the color as background, it is applied via the CSS property "background".

To optimize and compress your CSS code, you can use our [online CSS compressor and optimizer](#) based on csstidy. If you want to create a linear or radial gradient as background or border, check our [CSS Gradient Generator](#).

Hey! You found this booklet interesting? Support Converting Colors with the new Membership Option!

The pro membership hides all ads, plus gives you double the colors in the color bucket, and more awesome pro features!

[Learn more, Memberships starting at \\$2.50/m!](#)

**Follow me
on Twitter!**

@ConvertingColor