

Converting Colors

Hex(DFAFBE)

Have a look what the booklet for
Hex(DFAFBE) contains.

Hex(DFAFBE)	3
<i>Conversions</i>	4
<i>Details</i>	6
<i>Harmonies</i>	11
<i>Previews</i>	23
<i>Color Blindness Simulation</i>	26
<i>CSS Examples</i>	29

Color

Hex(DFAFBE)

Conversions

Conversions Part 1

Format	Color
Hex	DFAFBE
RGB	223, 175, 190
RGB Percent	87%, 69%, 75%
CMY	0.1255, 0.3137, 0.2549
CMYK	0.00, 0.22, 0.15, 0.13
HSL	341°, 43%, 78%
HSV	341°, 22%, 87%
XYZ	55.0557, 50.0656, 55.4771
YIQ	191.0620, 23.7930, 14.8410

Conversions

Conversions Part 2

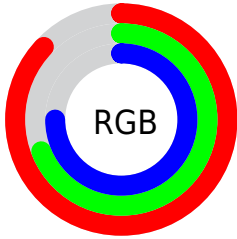
Format	Color
R _Y B	223, 175, 190
Decimal	14659518
CIE Lab	76.11, 19.77, -0.93
CIE LCh	76, 19.795, 357.305
Yxy	50.0656, 0.3428, 0.3117
Android (android.graphics.Color)	4292849598 (0xFFDFAFBE)
YUV	191.0620, -0.5236, 28.0096
Hunter-Lab	70.7571, 15.0649, 3.0436

Details

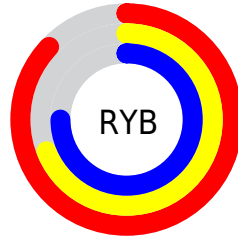
The Hex color **DFAFBE** is a light color, and the websafe version is hex **CC9999**. A complement of this color would be **AFDFD0**, and the grayscale version is **BFBFBF**.

A 20% lighter version of the original color is **FFE7F6**, and **A77A89** is the 20% darker color. If you saturate the color by 10%, you get **DF99AF**, and if you desaturate by 10%, it is **DFC5CD**.

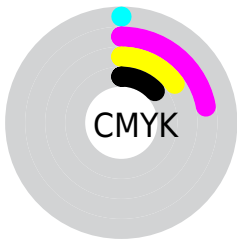
Distribution



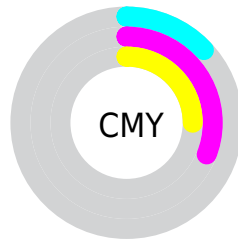
- Red (87%)
- Green (69%)
- Blue (75%)



- Red (87%)
- Yellow (69%)
- Blue (75%)



- Cyan (0%)
- Magenta (22%)
- Yellow (15%)
- Black (13%)



- Cyan (13%)
- Magenta (31%)
- Yellow (25%)

Brightness & Saturation Gradients

These gradients show how the Hex color DFAFBE changes by changing the brightness by 10 percent. The first figure shows a shift by +10% for each color and the second figure -10%.

Similar to the brightness gradients but the following saturation gradients show a change of the Hex color DFAFBE by changing the saturation by 10% instead.

 DFAFBE

 DFAFBE

FFFFFF

 C394A3

 FFE7F6

 A77A89

 8C616F

 724957

 593240

 411C2A

 2A0615

 080000

 000000

 DFAFBE

 DFAFBE

 DF99AF

 DFC5CD

 DF829F

 DFDCDD

 DF6C90

 DFF2EC

 DF5681

 DFFFFB

 DF4071

 DFFFFFF

 DF2962

 DF1353

 DF0046

Harmonies

Analogous

The Analogous color harmony consists of three colors that are next to each other on the color wheel.



D2B2D0



DFAFBE



E2B0AC

Triad

The Triadic color harmony groups three colors that are evenly spaced from another and form a triangle on the color wheel.



DFAFBE



B8C09B



91C3DA

Complementary

The Complementary color scheme is a pair of colors which are on the opposite of each other on the color wheel.



DFAFBE



AFDFD0

Split Complementary

Split-complementary colors differ from the complementary color scheme. The scheme consists of three colors, the original color and two neighbors of the complement color.



8AC6CC



DFAFBE



A3C4A7

Square

The Square scheme is like the rectangle color scheme, but the four colors are evenly spaced on the color wheel.



DFAFBE



CCBA97



92C6B9



A5BEE0

Rectangle

The Rectangle color scheme consists of four colors that form a rectangle on the color wheel.



DFAFBE



DEB2A2



92C6B9



8DC4D6

Sweetspot

The Sweet Spot groups the original color and five complimentary colors.



DFAFBE



FFF0F4



D0AFDF



807779



000000



808080

Same Dimension

The Same Dimension uses a secret algorithm to generate beautiful new colors.



DFAFBE



FFBDD1



DFB8AF



706568



B00037



30000F

Inverse Universe

The Inverse Universe completely reimagines the original color for something new.



DFAFBE



FFBDD1



AFD6DF



706568



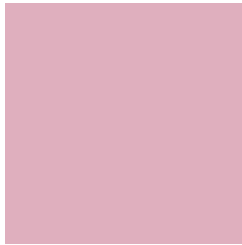
B00037



30000F

Previews

White Background



This preview shows how the Hex color DFAFBE looks on a white background.

Color Contrast Check

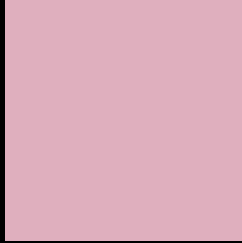
Large Text (above 18pt) WCAG AA × Fail

Any Text WCAG AA × Fail

Large Text (above 18pt) WCAG AAA × Fail

Any Text WCAG AAA × Fail

Black Background



This preview shows how the Hex color DFAFBE looks on a black background.

Color Contrast Check

Large Text (above 18pt) WCAG AA ✓ Pass

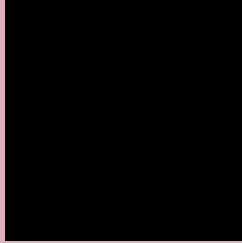
Any Text WCAG AA ✓ Pass

Large Text (above 18pt) WCAG AAA ✓ Pass

Any Text WCAG AAA ✓ Pass

If you want to check with other color combinations, try the [Color Contrast Checker](#).

Hex DFADFBE Background



This preview shows how black text looks on a background with the Hex color DFADFBE.

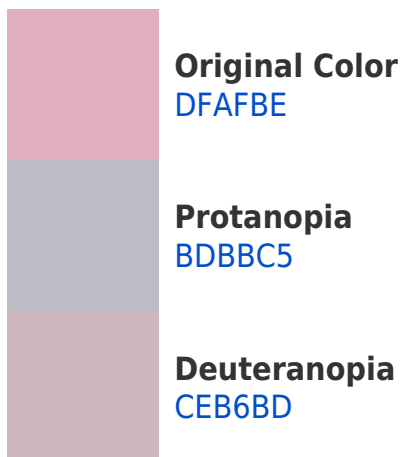


This preview shows how white text looks on a background with the Hex color DFADFBE.

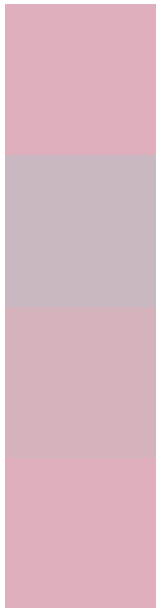
Color Blindness Simulation

Color vision deficiency is a very complex topic, and I could not describe the different causes any better than Wikipedia does, so if you want to learn more, you should check out their [article about color blindness](#).

Dichromacy



Trichromacy



Original Color
DFAFBE

Protanomaly
C9B7C2

Deuteranomaly
D4B3BD

Tritanomaly
DFAFBD

Monochromacy



Original Color
DFAFBE

Achromatopsia
BFBFBF

Achromatomaly
CBB9BF

CSS Examples

Text

The CSS property to change the color of the text to Hex DFADFBE is called "color". The color property can be set on classes, ids or directly on the HTML element.

This example shows how text in the color #DFADFBE looks like.

```
.text, #text, p{  
  color:#DFADFBE  
}
```

If you want to add a text shadow in that color use the text-shadow property, you can generate a text shadow directly with our [CSS Text Shadow Generator](#).

Here you see how black text with a 4 pixel #DFAFBE colored shadow looks like.

```
.shadow{ text-shadow: 4px 4px 2px #DFAFBE
}
```

Border

The CSS property to change the border of an element to Hex DFAFBE is called "border". The border property can be set on classes, ids or directly on the HTML element.

This example shows the color as border, it can be applied via the CSS property "border" or "border-color".

```
.border, #border, table{ border:4px solid
#DFAFBE }
```

If only the border color should be changed use the property `border-color`.

```
.border{ border-color:#DFAFBE }
```

If you want to add a box shadow in that color use:

Here you see how a box with a 4 pixel #DFAFBE colored shadow looks like.

```
.boxshadow{ -moz-box-shadow:4px 4px 4px  
4px #DFAFBE; -webkit-box-shadow:4px 4px  
4px 4px #DFAFBE; box-shadow:4px 4px 4px  
4px #DFAFBE }
```

Background

The CSS property to change the background color of an element to Hex DFADFBE is called "background". The background property can be set on classes, ids or directly on the HTML element.

```
.background, #background, body{  
background:#DFADFBE }
```

If only the background color should be changed can be used:

```
.background{ background-color:#DFADFBE }
```

This example shows the color as background, it is applied via the CSS property "background".

To optimize and compress your CSS code, you can use our [online CSS compressor and optimizer](#) based on csstidy. If you want to create a linear or radial gradient as background or border, check our [CSS Gradient Generator](#).

Hey! You found this booklet interesting? Support Converting Colors with the new Membership Option!

The pro membership hides all ads, plus gives you double the colors in the color bucket, and more awesome pro features!

[Learn more, Memberships starting at \\$2.50/m!](#)

**Follow me
on Twitter!**

@ConvertingColor