

Converting Colors

Hex(DFB5BF)

Have a look what the booklet for
Hex(DFB5BF) contains.

Hex(DFB5BF)	3
<i>Conversions</i>	4
<i>Details</i>	6
<i>Harmonies</i>	11
<i>Previews</i>	23
<i>Color Blindness Simulation</i>	26
<i>CSS Examples</i>	29

Color

Hex(DFB5BF)

Conversions

Conversions Part 1

Format	Color
Hex	DFB5BF
RGB	223, 181, 191
RGB Percent	87%, 71%, 75%
CMY	0.1255, 0.2902, 0.2510
CMYK	0.00, 0.19, 0.14, 0.13
HSL	346°, 40%, 79%
HSV	346°, 19%, 87%
XYZ	56.3593, 52.4973, 56.4528
YIQ	194.6980, 21.8220, 12.0140

Conversions

Conversions Part 2

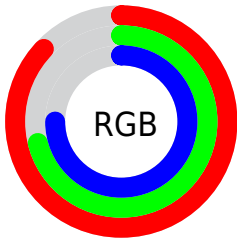
Format	Color
R _Y B	223, 181, 191
Decimal	14661055
CIE Lab	77.58, 16.71, 0.67
CIE LCh	78, 16.724, 2.292
Yxy	52.4973, 0.3409, 0.3176
Android (android.graphics.Color)	4292851135 (0xFFDFB5BF)
YUV	194.6980, -1.8231, 24.8209
Hunter-Lab	72.4550, 12.0502, 4.5232

Details

The Hex color **DFB5BF** is a light color, and the websafe version is hex **FFCCCC**. A complement of this color would be **B5DFD5**, and the grayscale version is **C3C3C3**.

A 20% lighter version of the original color is **FFEDF7**, and **A7808A** is the 20% darker color. If you saturate the color by 10%, you get **DF9FAE**, and if you desaturate by 10%, it is **DFCBD0**.

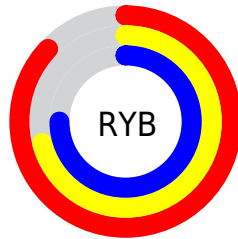
Distribution



Red (87%)

Green (71%)

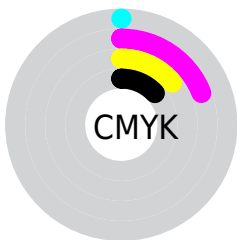
Blue (75%)



Red (87%)

Yellow (71%)

Blue (75%)

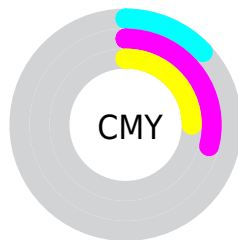


Cyan (0%)

Magenta (19%)

Yellow (14%)

Black (13%)



Cyan (13%)

Magenta (29%)

Yellow (25%)

Brightness & Saturation Gradients

These gradients show how the Hex color DFB5BF changes by changing the brightness by 10 percent. The first figure shows a shift by +10% for each color and the second figure -10%.

Similar to the brightness gradients but the following saturation gradients show a change of the Hex color DFB5BF by changing the saturation by 10% instead.

 DFB5BF

 DFB5BF

FFFFFF

 C39AA4

 FFEDF7

 A7808A

 8D6770

 734F58

 5A3741

 42212B

 2A0D16

 0F0000

 000000

 DFB5BF

 DFB5BF

 DF9FAE

 DFCBD0

 DF889D

 DFE2E1

 DF728C

 DFF8F2

 DF5C7B

 DFFFFFF

 DF466A

 DF2F59

 DF1948

 DF0337

 DF0035

Harmonies

Analogous

The Analogous color harmony consists of three colors that are next to each other on the color wheel.



D5B7CE



DFB5BF



E0B6B0

Triad

The Triadic color harmony groups three colors that are evenly spaced from another and form a triangle on the color wheel.



DFB5BF



BAC4A5



9FC5DB

Complementary

The Complementary color scheme is a pair of colors which are on the opposite of each other on the color wheel.



DFB5BF



B5DFD5

Split Complementary

Split-complementary colors differ from the complementary color scheme. The scheme consists of three colors, the original color and two neighbors of the complement color.



97C8D0



DFB5BF



A8C7B1

Square

The Square scheme is like the rectangle color scheme, but the four colors are evenly spaced on the color wheel.



DFB5BF



CBBFA1



9BC9C0



B0C1DE

Rectangle

The Rectangle color scheme consists of four colors that form a rectangle on the color wheel.



DFB5BF



DCB8A8



9BC9C0



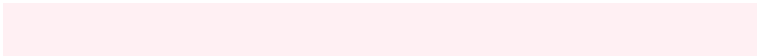
9BC6D8

Sweetspot

The Sweet Spot groups the original color and five complimentary colors.



DFB5BF



FFF0F3



D4B5DF



807779



000000



808080

Same Dimension

The Same Dimension uses a secret algorithm to generate beautiful new colors.



DFB5BF



FFC4D2



DFC0B5



706568



B0002A



30000C

Inverse Universe

The Inverse Universe completely reimagines the original color for something new.



DFB5BF



FFC4D2



B5D4DF



706568



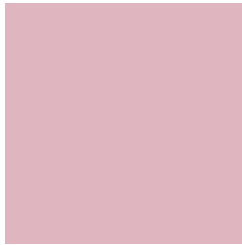
B0002A



30000C

Previews

White Background



This preview shows how the Hex color DFB5BF looks on a white background.

Color Contrast Check

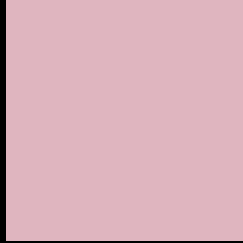
Large Text (above 18pt) WCAG AA × Fail

Any Text WCAG AA × Fail

Large Text (above 18pt) WCAG AAA × Fail

Any Text WCAG AAA × Fail

Black Background



This preview shows how the Hex color DFB5BF looks on a black background.

Color Contrast Check

Large Text (above 18pt) WCAG AA ✓ Pass

Any Text WCAG AA ✓ Pass

Large Text (above 18pt) WCAG AAA ✓ Pass

Any Text WCAG AAA ✓ Pass

If you want to check with other color combinations, try the [Color Contrast Checker](#).

Hex DFB5BF Background



This preview shows how black text looks on a background with the Hex color DFB5BF.

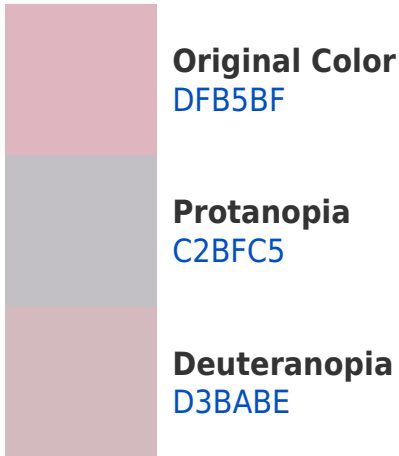


This preview shows how white text looks on a background with the Hex color DFB5BF.

Color Blindness Simulation

Color vision deficiency is a very complex topic, and I could not describe the different causes any better than Wikipedia does, so if you want to learn more, you should check out their [article about color blindness](#).

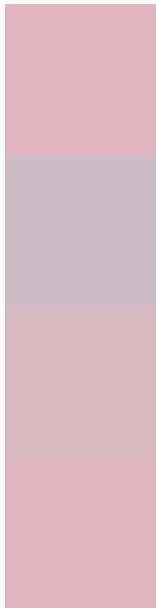
Dichromacy





Tritanopia
DFB4C2

Trichromacy



Original Color
DFB5BF

Protanomaly
CDBBC3

Deuteranomaly
D7B8BE

Tritanomaly
DFB4C1

Monochromacy



Original Color
DFB5BF

Achromatopsia
C3C3C3

Achromatomaly
CDBEC2

CSS Examples

Text

The CSS property to change the color of the text to Hex DFB5BF is called "color". The color property can be set on classes, ids or directly on the HTML element.

This example shows how text in the color #DFB5BF looks like.

```
.text, #text, p{  
    color:#DFB5BF  
}
```

If you want to add a text shadow in that color use the text-shadow property, you can generate a text shadow directly with our [CSS Text Shadow Generator](#).

Here you see how black text with a 4 pixel #DFB5BF colored shadow looks like.

```
.shadow{ text-shadow: 4px 4px 2px #DFB5BF }  
}
```

Border

The CSS property to change the border of an element to Hex DFB5BF is called "border". The border property can be set on classes, ids or directly on the HTML element.

This example shows the color as border, it can be applied via the CSS property "border" or "border-color".

```
.border, #border, table{ border:4px solid #DFB5BF }  
}
```

If only the border color should be changed use the property `border-color`.

```
.border{ border-color:#DFB5BF }
```

If you want to add a box shadow in that color use:

Here you see how a box with a 4 pixel #DFB5BF colored shadow looks like.

```
.boxshadow{ -moz-box-shadow:4px 4px 4px  
4px #DFB5BF; -webkit-box-shadow:4px 4px  
4px 4px #DFB5BF; box-shadow:4px 4px 4px  
4px #DFB5BF }
```

Background

The CSS property to change the background color of an element to Hex DFB5BF is called "background". The background property can be set on classes, ids or directly on the HTML element.

```
.background, #background, body{  
background:#DFB5BF }
```

If only the background color should be changed can be used:

```
.background{ background-color:#DFB5BF }
```

This example shows the color as background, it is applied via the CSS property "background".

To optimize and compress your CSS code, you can use our [online CSS compressor and optimizer](#) based on csstidy. If you want to create a linear or radial gradient as background or border, check our [CSS Gradient Generator](#).

Hey! You found this booklet interesting? Support Converting Colors with the new Membership Option!

The pro membership hides all ads, plus gives you double the colors in the color bucket, and more awesome pro features!

[Learn more, Memberships starting at \\$2.50/m!](#)

**Follow me
on Twitter!**

@ConvertingColor