

# Converting Colors

Hex(DFB5C2)

Have a look what the booklet for  
Hex(DFB5C2) contains.

<b>Hex(DFB5C2)</b> .....	3
<i><b>Conversions</b></i> .....	4
<i><b>Details</b></i> .....	6
<i><b>Harmonies</b></i> .....	11
<i><b>Previews</b></i> .....	23
<i><b>Color Blindness Simulation</b></i> .....	26
<i><b>CSS Examples</b></i> .....	29

# **Color**

**Hex(DFB5C2)**

# Conversions

## Conversions Part 1

Format	Color
Hex	DFB5C2
RGB	223, 181, 194
RGB Percent	87%, 71%, 76%
CMY	0.1255, 0.2902, 0.2392
CMYK	0.00, 0.19, 0.13, 0.13
HSL	341°, 40%, 79%
HSV	341°, 19%, 87%
XYZ	56.6929, 52.6308, 58.2097
YIQ	195.0400, 20.8590, 12.9470

# Conversions

## Conversions Part 2

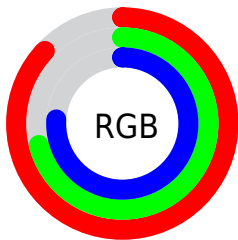
Format	Color
R <sub>Y</sub> B	223, 181, 194
Decimal	14661058
CIE Lab	77.66, 17.20, -0.84
CIE LCh	78, 17.217, 357.189
Yxy	52.6308, 0.3384, 0.3142
Android (android.graphics.Color)	4292851138 (0xFFDFB5C2)
YUV	195.0400, -0.5127, 24.5209
Hunter-Lab	72.5471, 12.5339, 3.2104

# Details

The Hex color **DFB5C2** is a light color, and the websafe version is hex **FFCCCC**. A complement of this color would be **B5DFD2**, and the grayscale version is **C3C3C3**.

A 20% lighter version of the original color is **FFEDFA**, and **A7808C** is the 20% darker color. If you saturate the color by 10%, you get **DF9FB3**, and if you desaturate by 10%, it is **DFCBD1**.

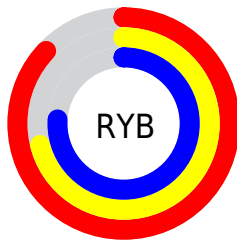
# Distribution



Red (87%)

Green (71%)

Blue (76%)



Red (87%)

Yellow (71%)

Blue (76%)

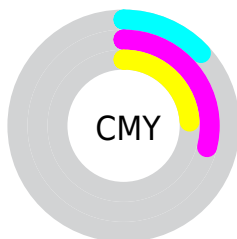


Cyan (0%)

Magenta (19%)

Yellow (13%)

Black (13%)



Cyan (13%)

Magenta (29%)

Yellow (24%)

# Brightness & Saturation Gradients

These gradients show how the Hex color DFB5C2 changes by changing the brightness by 10 percent. The first figure shows a shift by +10% for each color and the second figure -10%.

Similar to the brightness gradients but the following saturation gradients show a change of the Hex color DFB5C2 by changing the saturation by 10% instead.



 DFB5C2

 DFB5C2

FFFFFF

 C39AA7

 FFEDFA

 A7808C

 8D6773

 734F5A

 5A3743

 42212D

 2B0C18

 110000

 000000

 DFB5C2

 DFB5C2

 DF9FB3

 DFCBD1

 DF88A3

 DFE2E1

 DF7294

 DFF8F0

 DF5C84

 DFFFFFF

 DF4675

 DF2F66

 DF1956

 DF0347

 DF0045

# Harmonies

## Analogous

The Analogous color harmony consists of three colors that are next to each other on the color wheel.



D3B8D1



DFB5C2



E2B6B2

# Triad

The Triadic color harmony groups three colors that are evenly spaced from another and form a triangle on the color wheel.



DFB5C2



BDC3A3



9CC6DA

# Complementary

The Complementary color scheme is a pair of colors which are on the opposite of each other on the color wheel.



DFB5C2



B5DFD2

# Split Complementary

Split-complementary colors differ from the complementary color scheme. The scheme consists of three colors, the original color and two neighbors of the complement color.



96C9CE



DFB5C2



ABC7AE

# Square

The Square scheme is like the rectangle color scheme, but the four colors are evenly spaced on the color wheel.



DFB5C2



CEBEA0



9CC9BE



ACC2DF

# Rectangle

The Rectangle color scheme consists of four colors that form a rectangle on the color wheel.



DFB5C2



DEB8A9



9CC9BE



99C7D7



# Sweetspot

The Sweet Spot groups the original color and five complimentary colors.



DFB5C2



FFF0F4



D2B5DF



807779



000000



808080



# Same Dimension

The Same Dimension uses a secret algorithm to generate beautiful new colors.



DFB5C2



FFC4D7



DFBDB5



706568



B00036



30000F



# Inverse Universe

The Inverse Universe completely reimagines the original color for something new.



DFB5C2



FFC4D7



B5D7DF



706568



B00036

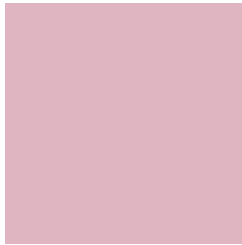


30000F



# Previews

## White Background



This preview shows how the Hex color DFB5C2 looks on a white background.

## Color Contrast Check

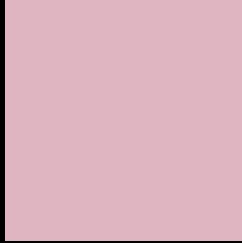
Large Text (above 18pt) WCAG AA × Fail

Any Text WCAG AA × Fail

Large Text (above 18pt) WCAG AAA × Fail

Any Text WCAG AAA × Fail

# Black Background



This preview shows how the Hex color DFB5C2 looks on a black background.

## Color Contrast Check

Large Text (above 18pt) WCAG AA ✓ Pass

Any Text WCAG AA ✓ Pass

Large Text (above 18pt) WCAG AAA ✓ Pass

Any Text WCAG AAA ✓ Pass

If you want to check with other color combinations, try the [Color Contrast Checker](#).



## Hex DFB5C2 Background



This preview shows how black text looks on a background with the Hex color DFB5C2.

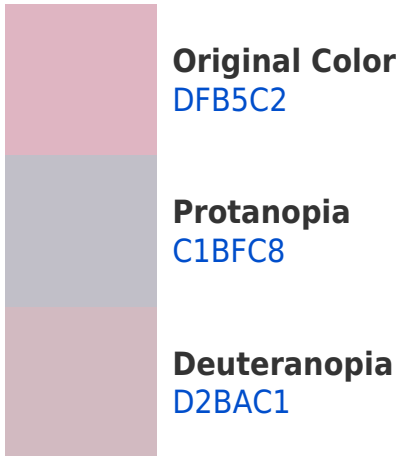


This preview shows how white text looks on a background with the Hex color DFB5C2.

# Color Blindness Simulation

Color vision deficiency is a very complex topic, and I could not describe the different causes any better than Wikipedia does, so if you want to learn more, you should check out their [article about color blindness](#).

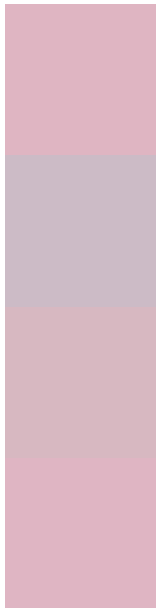
## Dichromacy





**Tritanopia**  
DFB5C3

# Trichromacy



**Original Color**  
DFB5C2

**Protanomaly**  
CCBBC6

**Deuteranomaly**  
D7B8C1

**Tritanomaly**  
DFB5C3

# Monochromacy



**Original Color**  
DFB5C2

**Achromatopsia**  
C3C3C3

**Achromatomaly**  
CDBEC3

# CSS Examples

## Text

The CSS property to change the color of the text to Hex DFB5C2 is called "color". The color property can be set on classes, ids or directly on the HTML element.

This example shows how text in the color #DFB5C2 looks like.

```
.text, #text, p{  
    color:#DFB5C2  
}
```

If you want to add a text shadow in that color use the text-shadow property, you can generate a text shadow directly with our [CSS Text Shadow Generator](#).

Here you see how black text with a 4 pixel #DFB5C2 colored shadow looks like.

```
.shadow{ text-shadow: 4px 4px 2px #DFB5C2
}
```

## Border

The CSS property to change the border of an element to Hex DFB5C2 is called "border". The border property can be set on classes, ids or directly on the HTML element.

This example shows the color as border, it can be applied via the CSS property "border" or "border-color".

```
.border, #border, table{ border:4px solid
#DFB5C2 }
```

If only the border color should be changed use the property `border-color`.

```
.border{ border-color:#DFB5C2 }
```

If you want to add a box shadow in that color use:

Here you see how a box with a 4 pixel #DFB5C2 colored shadow looks like.

```
.boxshadow{ -moz-box-shadow:4px 4px 4px  
4px #DFB5C2; -webkit-box-shadow:4px 4px  
4px 4px #DFB5C2; box-shadow:4px 4px 4px  
4px #DFB5C2 }
```

# Background

The CSS property to change the background color of an element to Hex DFB5C2 is called "background". The background property can be set on classes, ids or directly on the HTML element.

```
.background, #background, body{  
background:#DFB5C2 }
```

If only the background color should be changed can be used:

```
.background{ background-color:#DFB5C2 }
```

This example shows the color as background, it is applied via the CSS property "background".

To optimize and compress your CSS code, you can use our [online CSS compressor and optimizer](#) based on csstidy. If you want to create a linear or radial gradient as background or border, check our [CSS Gradient Generator](#).



Hey! You found this booklet interesting? Support Converting Colors with the new Membership Option!

The pro membership hides all ads, plus gives you double the colors in the color bucket, and more awesome pro features!

**[Learn more, Memberships starting at \\$2.50/m!](#)**

**Follow me  
on Twitter!**

@ConvertingColor