

Converting Colors

Hex(DFB8B7)

Have a look what the booklet for
Hex(DFB8B7) contains.

Hex(DFB8B7)	3
<i>Conversions</i>	4
<i>Details</i>	6
<i>Harmonies</i>	11
<i>Previews</i>	23
<i>Color Blindness Simulation</i>	26
<i>CSS Examples</i>	29

Color

Hex(DFB8B7)

Conversions

Conversions Part 1

Format	Color
Hex	DFB8B7
RGB	223, 184, 183
RGB Percent	87%, 72%, 72%
CMY	0.1255, 0.2784, 0.2824
CMYK	0.00, 0.17, 0.18, 0.13
HSL	1°, 38%, 80%
HSV	1°, 18%, 87%
XYZ	56.1192, 53.3879, 52.1468
YIQ	195.5470, 23.5650, 7.9570

Conversions

Conversions Part 2

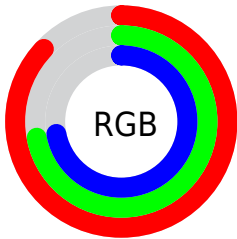
Format	Color
R _Y B	223, 184, 183
Decimal	14661815
CIE Lab	78.10, 13.85, 5.77
CIE LCh	78, 14.999, 22.622
Yxy	53.3879, 0.3472, 0.3303
Android (android.graphics.Color)	4292851895 (0xFFDFB8B7)
YUV	195.5470, -6.1857, 24.0763
Hunter-Lab	73.0670, 9.2298, 8.8325

Details

The Hex color **DFB8B7** is a light color, and the websafe version is hex **FFCCCC**. A complement of this color would be **B7DEDF**, and the grayscale version is **C4C4C4**.

A 20% lighter version of the original color is **FFF0EF**, and **A78382** is the 20% darker color. If you saturate the color by 10%, you get **DFA2A1**, and if you desaturate by 10%, it is **DFCECD**.

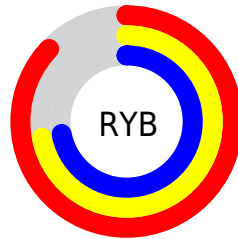
Distribution



Red (87%)

Green (72%)

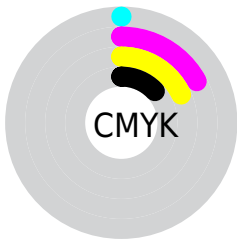
Blue (72%)



Red (87%)

Yellow (72%)

Blue (72%)

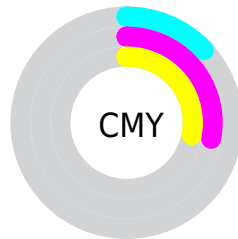


Cyan (0%)

Magenta (17%)

Yellow (18%)

Black (13%)



Cyan (13%)

Magenta (28%)

Yellow (28%)

Brightness & Saturation Gradients

These gradients show how the Hex color DFB8B7 changes by changing the brightness by 10 percent. The first figure shows a shift by +10% for each color and the second figure -10%.

Similar to the brightness gradients but the following saturation gradients show a change of the Hex color DFB8B7 by changing the saturation by 10% instead.

 DFB8B7

 DFB8B7

FFFFFF

 C39D9C

 FFF0EF

 A78382

 8D6A69

 735151

 593A3A

 412424

 2A100F

 0E0000

 000000

 DFB8B7

 DFB8B7

 DFA2A1

 DFCECD

 DF8D8A

 DFE3E4

 DF7774

 DFF9FA

 DF615E

 DFFFFFF

 DF4B47

 DF3631

 DF201B

 DF0A05

 DF0600

Harmonies

Analogous

The Analogous color harmony consists of three colors that are next to each other on the color wheel.



DBB8C5



DFB8B7



DBBBAC

Triad

The Triadic color harmony groups three colors that are evenly spaced from another and form a triangle on the color wheel.



DFB8B7



B1C7B0



AEC3DC

Complementary

The Complementary color scheme is a pair of colors which are on the opposite of each other on the color wheel.



DFB8B7



B7DEDF

Split Complementary

Split-complementary colors differ from the complementary color scheme. The scheme consists of three colors, the original color and two neighbors of the complement color.



A1C7D7



DFB8B7



A4C9BD

Square

The Square scheme is like the rectangle color scheme, but the four colors are evenly spaced on the color wheel.



DFB8B7



C1C4A7



9DC9CB



C0BFDB

Rectangle

The Rectangle color scheme consists of four colors that form a rectangle on the color wheel.



DFB8B7



D4BDA7



9DC9CB



A9C5DB

Sweetspot

The Sweet Spot groups the original color and five complimentary colors.



DFB8B7



FFF3F2



DFB7DE



807878



000000



808080

Same Dimension

The Same Dimension uses a secret algorithm to generate beautiful new colors.



DFB8B7



FFC8C7



DFCCB7



706565



B00400



300100

Inverse Universe

The Inverse Universe completely reimagines the original color for something new.



B7DEDF



C7FEFF



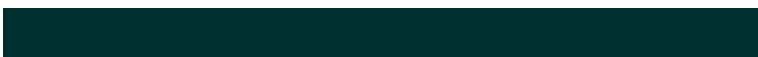
B7CADF



657070



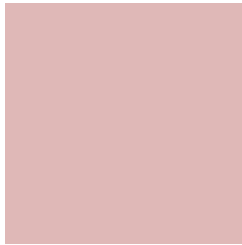
00ACB0



002F30

Previews

White Background



This preview shows how the Hex color DFB8B7 looks on a white background.

Color Contrast Check

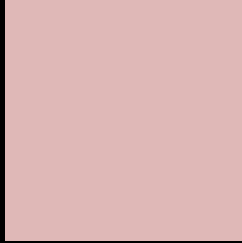
Large Text (above 18pt) WCAG AA × Fail

Any Text WCAG AA × Fail

Large Text (above 18pt) WCAG AAA × Fail

Any Text WCAG AAA × Fail

Black Background



This preview shows how the Hex color DFB8B7 looks on a black background.

Color Contrast Check

Large Text (above 18pt) WCAG AA ✓ Pass

Any Text WCAG AA ✓ Pass

Large Text (above 18pt) WCAG AAA ✓ Pass

Any Text WCAG AAA ✓ Pass

If you want to check with other color combinations, try the [Color Contrast Checker](#).

Hex DFB8B7 Background



This preview shows how black text looks on a background with the Hex color DFB8B7.

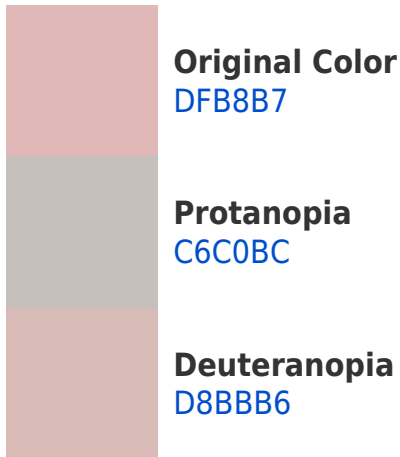


This preview shows how white text looks on a background with the Hex color DFB8B7.

Color Blindness Simulation

Color vision deficiency is a very complex topic, and I could not describe the different causes any better than Wikipedia does, so if you want to learn more, you should check out their [article about color blindness](#).

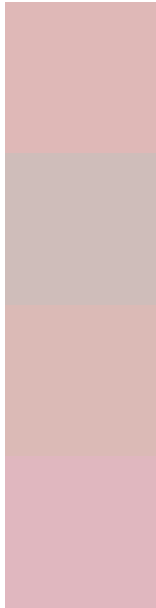
Dichromacy





Tritanopia
E1B6C4

Trichromacy



Original Color
DFB8B7

Protanomaly
CFBDBA

Deuteranomaly
DBBAB6

Tritanomaly
E0B7BF

Monochromacy



Original Color
DFB8B7

Achromatopsia
C4C4C4

Achromatomaly
CEC0BF

CSS Examples

Text

The CSS property to change the color of the text to Hex DFB8B7 is called "color". The color property can be set on classes, ids or directly on the HTML element.

This example shows how text in the color #DFB8B7 looks like.

```
.text, #text, p{  
    color:#DFB8B7  
}
```

If you want to add a text shadow in that color use the text-shadow property, you can generate a text shadow directly with our [CSS Text Shadow Generator](#).

Here you see how black text with a 4 pixel #DFB8B7 colored shadow looks like.

```
.shadow{ text-shadow: 4px 4px 2px #DFB8B7
}
```

Border

The CSS property to change the border of an element to Hex DFB8B7 is called "border". The border property can be set on classes, ids or directly on the HTML element.

This example shows the color as border, it can be applied via the CSS property "border" or "border-color".

```
.border, #border, table{ border:4px solid
#DFB8B7 }
```

If only the border color should be changed use the property `border-color`.

```
.border{ border-color:#DFB8B7 }
```

If you want to add a box shadow in that color use:

Here you see how a box with a 4 pixel #DFB8B7 colored shadow looks like.

```
.boxshadow{ -moz-box-shadow:4px 4px 4px  
4px #DFB8B7; -webkit-box-shadow:4px 4px  
4px 4px #DFB8B7; box-shadow:4px 4px 4px  
4px #DFB8B7 }
```

Background

The CSS property to change the background color of an element to Hex DFB8B7 is called "background". The background property can be set on classes, ids or directly on the HTML element.

```
.background, #background, body{  
background:#DFB8B7 }
```

If only the background color should be changed can be used:

```
.background{ background-color:#DFB8B7 }
```

This example shows the color as background, it is applied via the CSS property "background".

To optimize and compress your CSS code, you can use our [online CSS compressor and optimizer](#) based on csstidy. If you want to create a linear or radial gradient as background or border, check our [CSS Gradient Generator](#).

Hey! You found this booklet interesting? Support Converting Colors with the new Membership Option!

The pro membership hides all ads, plus gives you double the colors in the color bucket, and more awesome pro features!

[Learn more, Memberships starting at \\$2.50/m!](#)

**Follow me
on Twitter!**

@ConvertingColor