

Converting Colors

Hex(DFB9C7)

Have a look what the booklet for
Hex(DFB9C7) contains.

Hex(DFB9C7)	3
<i>Conversions</i>	4
<i>Details</i>	6
<i>Harmonies</i>	11
<i>Previews</i>	23
<i>Color Blindness Simulation</i>	26
<i>CSS Examples</i>	29

Color

Hex(DFB9C7)

Conversions

Conversions Part 1

Format	Color
Hex	DFB9C7
RGB	223, 185, 199
RGB Percent	87%, 73%, 78%
CMY	0.1255, 0.2745, 0.2196
CMYK	0.00, 0.17, 0.11, 0.13
HSL	338°, 37%, 80%
HSV	338°, 17%, 87%
XYZ	58.0892, 54.5094, 61.4926
YIQ	197.9580, 18.1540, 12.4100

Conversions

Conversions Part 2

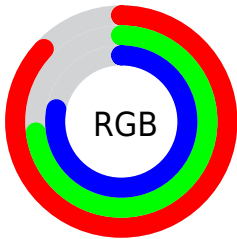
Format	Color
R _Y B	223, 185, 199
Decimal	14662087
CIE Lab	78.76, 15.88, -1.94
CIE LCh	79, 15.995, 353.028
Yxy	54.5094, 0.3337, 0.3131
Android (android.graphics.Color)	4292852167 (0xFFDFB9C7)
YUV	197.9580, 0.5137, 21.9618
Hunter-Lab	73.8305, 11.2389, 2.2994

Details

The Hex color **DFB9C7** is a light color, and the websafe version is hex **FFCCCC**. A complement of this color would be **B9DFD1**, and the grayscale version is **C6C6C6**.

A 20% lighter version of the original color is **FFF1FF**, and **A78491** is the 20% darker color. If you saturate the color by 10%, you get **DFA3B9**, and if you desaturate by 10%, it is **DFCFD5**.

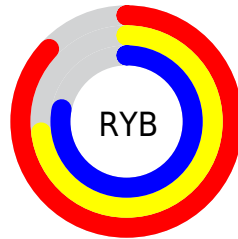
Distribution



Red (87%)

Green (73%)

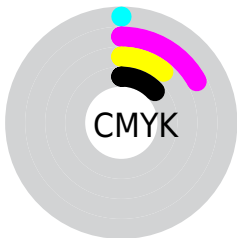
Blue (78%)



Red (87%)

Yellow (73%)

Blue (78%)

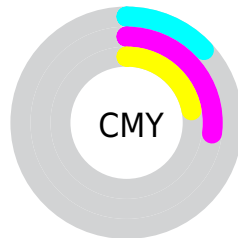


Cyan (0%)

Magenta (17%)

Yellow (11%)

Black (13%)



Cyan (13%)

Magenta (27%)

Yellow (22%)

Brightness & Saturation Gradients

These gradients show how the Hex color DFB9C7 changes by changing the brightness by 10 percent. The first figure shows a shift by +10% for each color and the second figure -10%.

Similar to the brightness gradients but the following saturation gradients show a change of the Hex color DFB9C7 by changing the saturation by 10% instead.

 DFB9C7

 DFB9C7

FFFFFF

 C39EAC

 FFF1FF

 A78491

 8D6A78

 73525F

 5A3B47

 422531

 2B101C

 170000

 000000

 DFB9C7

 DFB9C7

 DFA3B9

 DF CFD5

 DF8CAB

 DFE6E3

 DF769D

 DFFCF1

 DF608F

 DFFFFFF

 DF4A81

 DF3372

 DF1D64

 DF0756

 DF0052

Harmonies

Analogous

The Analogous color harmony consists of three colors that are next to each other on the color wheel.



D3BCD5



DFB9C7



E3B9B8

Triad

The Triadic color harmony groups three colors that are evenly spaced from another and form a triangle on the color wheel.



DFB9C7



C2C6A7



A1C9DA

Complementary

The Complementary color scheme is a pair of colors which are on the opposite of each other on the color wheel.



DFB9C7



B9DFD1

Split Complementary

Split-complementary colors differ from the complementary color scheme. The scheme consists of three colors, the original color and two neighbors of the complement color.



9CCBCE



DFB9C7



B1C9B1

Square

The Square scheme is like the rectangle color scheme, but the four colors are evenly spaced on the color wheel.



DFB9C7



D2C1A6



A3CCBF



AFC5E0

Rectangle

The Rectangle color scheme consists of four colors that form a rectangle on the color wheel.



DFB9C7



E0BBAF



A3CCBF



9ECAD7

Sweetspot

The Sweet Spot groups the original color and five complimentary colors.



DFB9C7



FFF2F7



D0B9DF



80787B



000000



808080

Same Dimension

The Same Dimension uses a secret algorithm to generate beautiful new colors.



DFB9C7



FFCCDF



DFBDB9



706569



B00041



300012

Inverse Universe

The Inverse Universe completely reimagines the original color for something new.



DFB9C7



FFCCDF



B9DBDF



706569



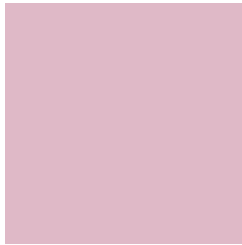
B00041



300012

Previews

White Background



This preview shows how the Hex color DFB9C7 looks on a white background.

Color Contrast Check

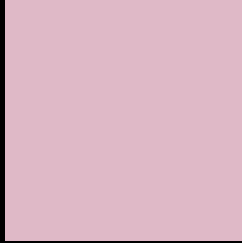
Large Text (above 18pt) WCAG AA × Fail

Any Text WCAG AA × Fail

Large Text (above 18pt) WCAG AAA × Fail

Any Text WCAG AAA × Fail

Black Background



This preview shows how the Hex color DFB9C7 looks on a black background.

Color Contrast Check

Large Text (above 18pt) WCAG AA ✓ Pass

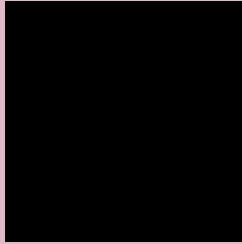
Any Text WCAG AA ✓ Pass

Large Text (above 18pt) WCAG AAA ✓ Pass

Any Text WCAG AAA ✓ Pass

If you want to check with other color combinations, try the [Color Contrast Checker](#).

Hex DFB9C7 Background



This preview shows how black text looks on a background with the Hex color DFB9C7.



This preview shows how white text looks on a background with the Hex color DFB9C7.

Color Blindness Simulation

Color vision deficiency is a very complex topic, and I could not describe the different causes any better than Wikipedia does, so if you want to learn more, you should check out their [article about color blindness](#).

Dichromacy



Original Color
DFB9C7

Protanopia
C4C2CC

Deuteranopia
D4BDC6



Tritanopia
DFB9C7

Trichromacy



Original Color
DFB9C7

Protanomaly
CEBFCA

Deuteranomaly
D8BCC6

Tritanomaly
DFB9C7

Monochromacy



Original Color
DFB9C7

Achromatopsia
C6C6C6

Achromatomaly
CFC1C6

CSS Examples

Text

The CSS property to change the color of the text to Hex DFB9C7 is called "color". The color property can be set on classes, ids or directly on the HTML element.

This example shows how text in the color #DFB9C7 looks like.

```
.text, #text, p{  
    color:#DFB9C7  
}
```

If you want to add a text shadow in that color use the text-shadow property, you can generate a text shadow directly with our [CSS Text Shadow Generator](#).

Here you see how black text with a 4 pixel #DFB9C7 colored shadow looks like.

```
.shadow{ text-shadow: 4px 4px 2px #DFB9C7
}
```

Border

The CSS property to change the border of an element to Hex DFB9C7 is called "border". The border property can be set on classes, ids or directly on the HTML element.

This example shows the color as border, it can be applied via the CSS property "border" or "border-color".

```
.border, #border, table{ border:4px solid
#DFB9C7 }
```

If only the border color should be changed use the property `border-color`.

```
.border{ border-color:#DFB9C7 }
```

If you want to add a box shadow in that color use:

Here you see how a box with a 4 pixel #DFB9C7 colored shadow looks like.

```
.boxshadow{ -moz-box-shadow:4px 4px 4px  
4px #DFB9C7; -webkit-box-shadow:4px 4px  
4px 4px #DFB9C7; box-shadow:4px 4px 4px  
4px #DFB9C7 }
```

Background

The CSS property to change the background color of an element to Hex DFB9C7 is called "background". The background property can be set on classes, ids or directly on the HTML element.

```
.background, #background, body{  
background:#DFB9C7 }
```

If only the background color should be changed can be used:

```
.background{ background-color:#DFB9C7 }
```

This example shows the color as background, it is applied via the CSS property "background".

To optimize and compress your CSS code, you can use our [online CSS compressor and optimizer](#) based on csstidy. If you want to create a linear or radial gradient as background or border, check our [CSS Gradient Generator](#).

Hey! You found this booklet interesting? Support Converting Colors with the new Membership Option!

The pro membership hides all ads, plus gives you double the colors in the color bucket, and more awesome pro features!

[Learn more, Memberships starting at \\$2.50/m!](#)

**Follow me
on Twitter!**

@ConvertingColor